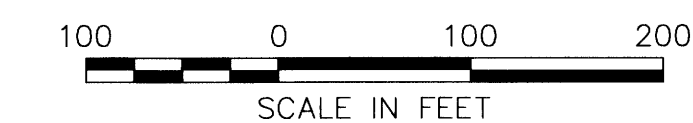
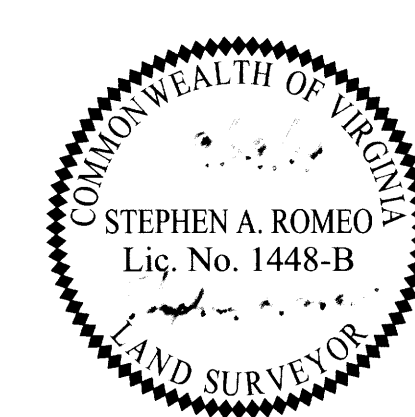
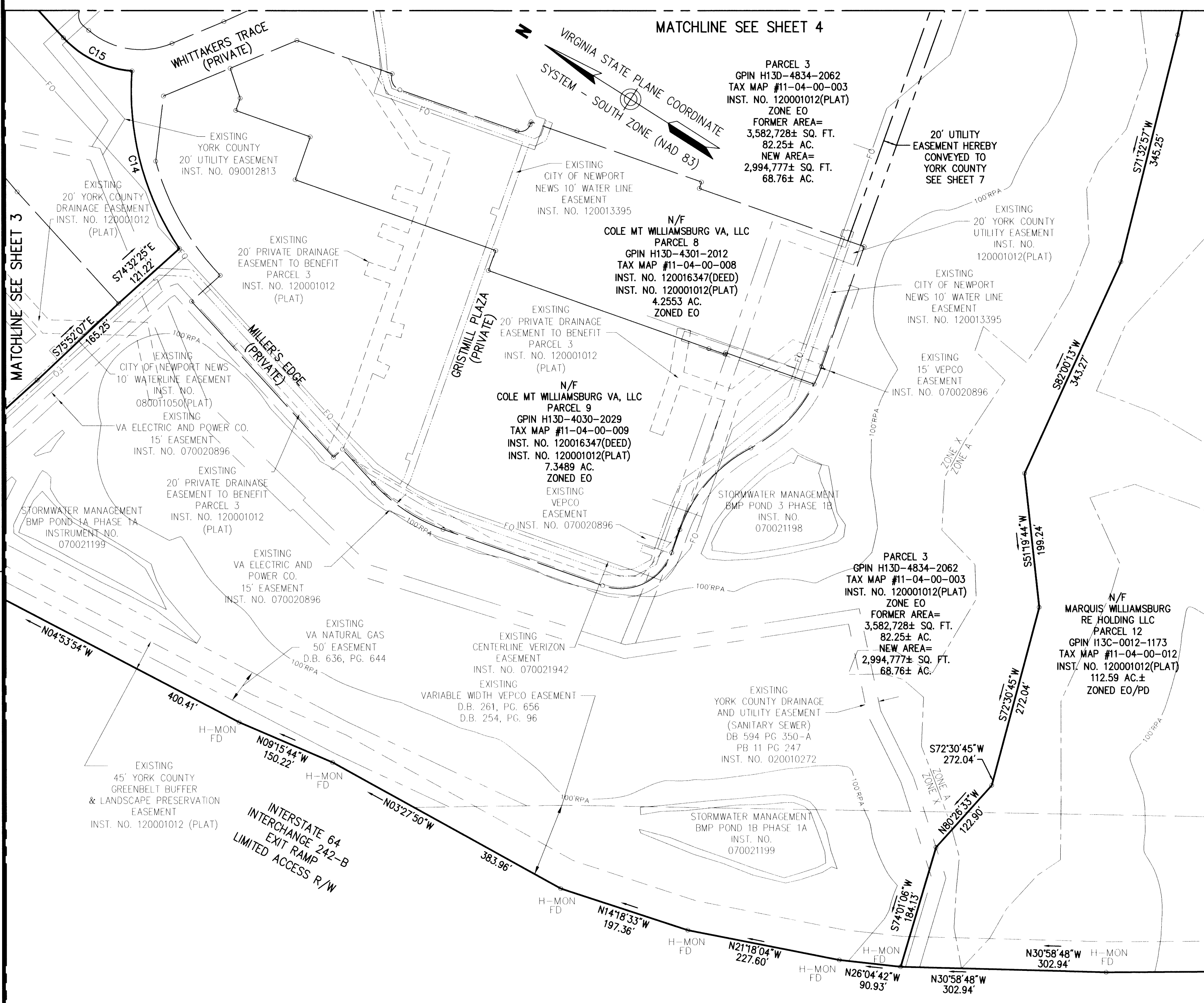


**SUBDIVISION OF PARCEL 3  
BEING THE PROPERTY OF  
MARQUIS WILLIAMSBURG  
RE HOLDING LLC**

BRUTON DISTRICT, YORK COUNTY, VIRGINIA  
DATE: 9/19/14 SCALE: 1"=100'  
SHEET 5 OF 8



**VHB**  
**Vanasse Hangen Brustlin, Inc.**  
Transportation Land Development Environmental Services  
351 McLeans Circle, Suite 3  
Williamsburg, Virginia 23185  
(757) 220-0500 • FAX (757) 220-8544

APPROVED:  
YORK COUNTY BOARD OF SUPERVISORS  
BY: *[Signature]*  
PLAT APPROVING AGENT  
*[Signature]*  
DATE: 1.7.15

STATE OF VIRGINIA, COUNTY OF YORK  
IN THE CLERK'S OFFICE OF THE CIRCUIT COURT FOR THE COUNTY OF YORK-BOQUOSON THE 10 DAY OF FEB 2015 THIS MAP WAS PRESENTED AND ADMITTED TO RECORD AS THE LAW DIRECTS AS INSTRUMENT NO. 160002010  
TESTE: *[Signature]* Kristen N. Nelson, Clerk  
BY: *[Signature]*

INTERSTATE 64  
INTERCHANGE 242-B  
EXIT RAMP  
LIMITED ACCESS R/W