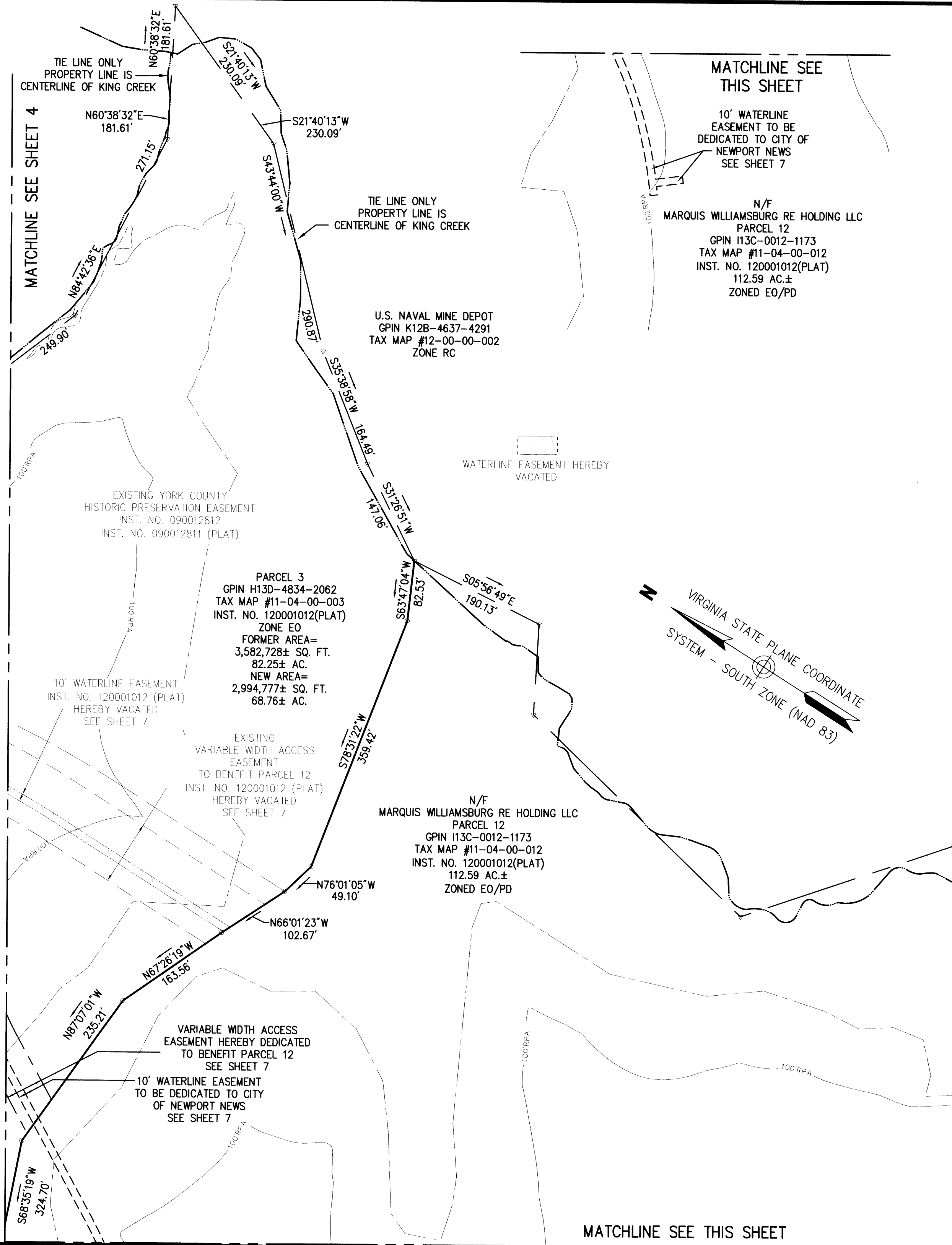


**SUBDIVISION OF PARCEL 3
BEING THE PROPERTY OF
MARQUIS WILLIAMSBURG
RE HOLDING LLC**

BRUTON DISTRICT, YORK COUNTY, VIRGINIA
DATE: 9/19/14 SCALE: 1"=100'
SHEET 6 OF 8



MATCHLINE SEE THIS SHEET

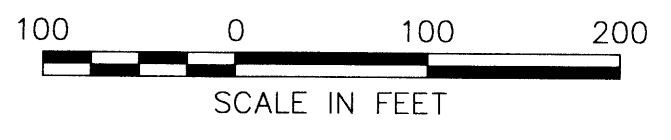
10' WATERLINE EASEMENT TO BE DEDICATED TO CITY OF NEWPORT NEWS SEE SHEET 7

N/F
MARQUIS WILLIAMSBURG RE HOLDING LLC
PARCEL 12
GPIN I13C-0012-1173
TAX MAP #11-04-00-012
INST. NO. 120001012(PLAT)
112.59 AC.±
ZONED EO/PD

U.S. NAVAL MINE DEPOT
GPIN K12B-4637-4291
TAX MAP #12-00-00-002
ZONE RC

PARCEL 3
GPIN H13D-4834-2062
TAX MAP #11-04-00-003
INST. NO. 120001012(PLAT)
ZONE EO
FORMER AREA=
3,582,728± SQ. FT.
82.25± AC.
NEW AREA=
2,994,777± SQ. FT.
68.76± AC.

N/F
MARQUIS WILLIAMSBURG RE HOLDING LLC
PARCEL 12
GPIN I13C-0012-1173
TAX MAP #11-04-00-012
INST. NO. 120001012(PLAT)
112.59 AC.±
ZONED EO/PD



Vanasse Hangen Brustlin, Inc.
Transportation Land Development Environmental Services
351 McLeans Circle, Suite 3
Williamsburg, Virginia 23185
(757) 220-0500 • FAX (757) 220-8544

APPROVED:
YORK COUNTY BOARD OF SUPERVISORS

BY: [Signature]
PLAT APPROVING AGENT

DATE: 9/19/14

STATE OF VIRGINIA, COUNTY OF YORK
IN THE CLERK'S OFFICE OF THE CIRCUIT COURT FOR THE
COUNTY OF YORK-PQQUOSN THE 10th DAY OF
Feb 2014, THIS MAP WAS PRESENTED AND
ADMITTED TO RECORD AS THE LAW DIRECTS AS
INSTRUMENT NO. 50002070

TESTE: Kristen N. Nelson, Clerk
CLERK

BY: [Signature]

2015 FEB 10 PM 1:54