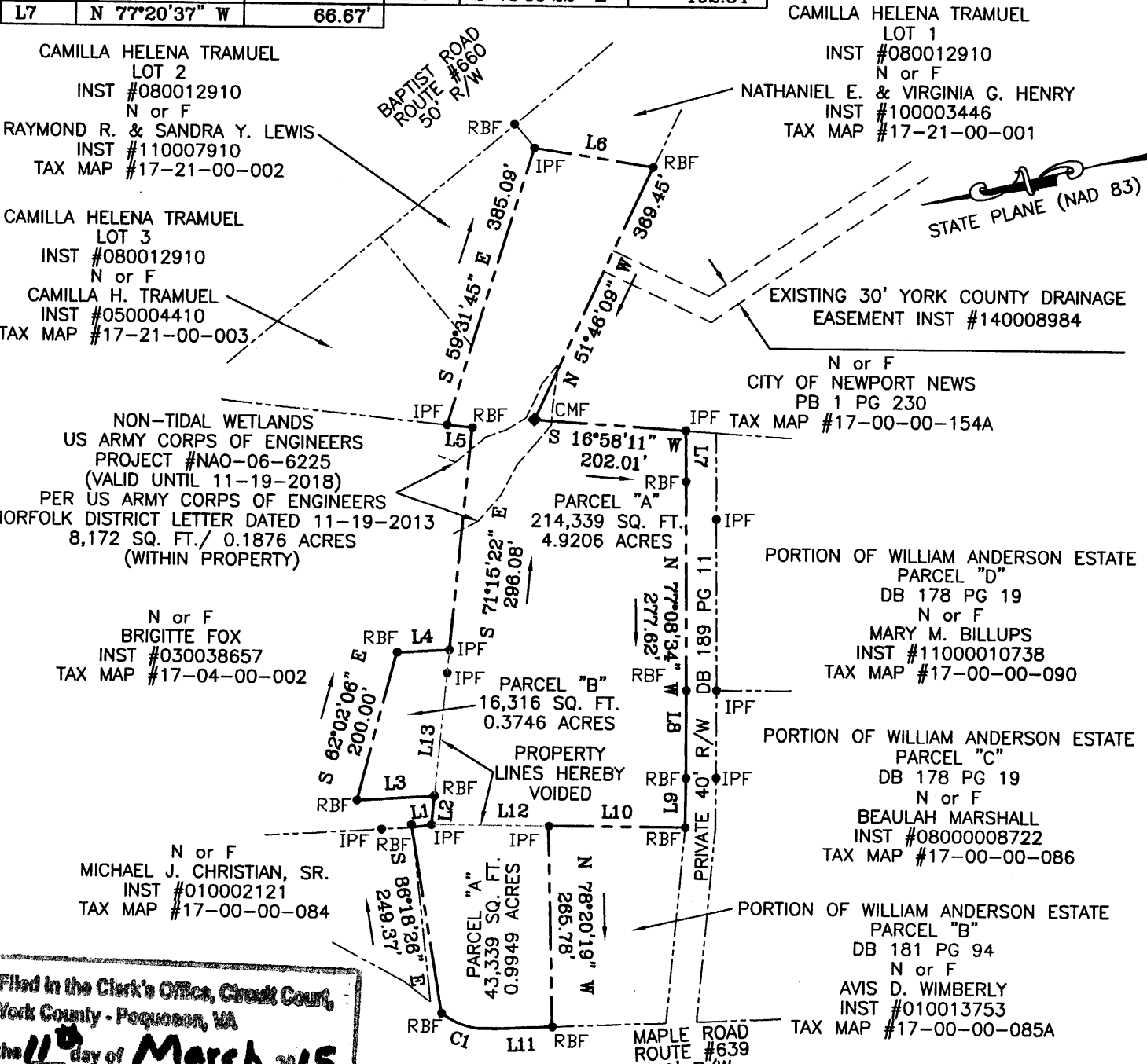


CURVE	DELTA ANGLE	RADIUS	ARC LENGTH	TANGENT	CHORD LENGTH	CHORD BEARING
C1	38°52'20"	102.27'	69.38'	36.09'	68.06'	N 30°16'31" E

LINE	BEARING	DISTANCE	LINE	BEARING	DISTANCE
L1	S 05°01'41" W	26.35'	L8	N 76°53'36" W	114.37'
L2	S 71°15'22" E	38.30'	L9	N 76°20'25" W	64.47'
L3	N 09°44'54" E	102.11'	L10	N 13°25'21" E	181.88'
L4	S 09°44'54" W	69.66'	L11	N 10°50'21" E	82.19'
L5	N 19°00'09" E	33.57'	L12	N 13°25'21" E	155.15'
L6	S 22°22'45" W	160.04'	L13	S 71°15'22" E	192.34'
L7	N 77°20'37" W	66.67'			



Filed in the Clerk's Office, Circuit Court,
York County - Poquoson, VA
the 11th day of March, 2015
Teste: Kristen N. Nelson, Clerk
By: Valerie P. Robbins, D.C.

COMMONWEALTH OF VIRGINIA
ANTHONY D. POTTS
LIC. NO. 001487-B
1-22-15
LAND SURVEYOR

YORK COUNTY
APPROVED FOR RECORDATION
BY: *A.D. Potts*
CHIEF OF DEVELOPMENT & COMPLIANCE
DATE: 3/9/15

SHEET 2 OF 2
425, 515, 605 MAPLE ROAD REV. 1/22/15

PROPERTY LINE VACATIONS ON THE PROPERTY OF
HAMPTON ROADS DEVELOPMENT, L.L.C.

**PORTION OF WILLIAM ANDERSON ESTATE,
PARCEL "A" & PART OF THE EUGENE NESMITH
ESTATE, PARCELS "A" AND "B"
CONTAINING A TOTAL OF 6.2900 ACRES**
NELSON DISTRICT
YORK COUNTY, VIRGINIA

ADPA A.D. POTTS & ASSOCIATES, INC.
11524 JEFFERSON AVENUE
NEWPORT NEWS, VIRGINIA 23601
PHONE: (757) 595-4610
SCALE: 1"=200' DATE: 10/31/14

I HEREBY CERTIFY THAT THIS BOUNDARY SURVEY,
BASED ON A CURRENT FIELD SURVEY IS, TO THE BEST
OF MY KNOWLEDGE AND BELIEF, CORRECT AND COMPLIES
WITH THE MINIMUM PROCEDURES AND STANDARDS
ESTABLISHED BY THE VIRGINIA BOARD FOR ARCHITECTS,
PROFESSIONAL ENGINEERS, LAND SURVEYORS, CERTIFIED
INTERIOR DESIGNERS AND LANDSCAPE ARCHITECTS.

Anthony D. Potts
ANTHONY D. POTTS, L.S.