

N/F
THE QUARTERS OF YORK COUNTY
COMMUNITY ASSOCIATION, INC.
INST 050021232
PHASE I, COMMON AREA A
GPIN Q08b-3633-2906
TAX MAP 24-84-01-000A
ZONED RMF

N/F
THE QUARTERS OF YORK COUNTY
COMMUNITY ASSOCIATION, INC.
INST 050021232
PHASE I, COMMON AREA A
GPIN Q08b-3633-2906
TAX MAP 24-84-01-000A
ZONED RMF

N/F
THE QUARTERS OF YORK COUNTY
COMMUNITY ASSOCIATION, INC.
INST 060022026
PHASE II, COMMON AREA A
PLAT BOOK 10, PG 383-385
GPIN Q08b-3245-2648
TAX MAP 24-84-02-000A
ZONED RMF

N/F
WOOD TOWNE QUARTERS
TH OWNERS ASSOCIATION, INC
DEED BOOK 615, PG 338
PHASE II, COMMON AREA
PLAT BOOK 10, PG 383-385
GPIN Q08b-2878-3352
TAX MAP 24-55-02-000A
ZONED RMF

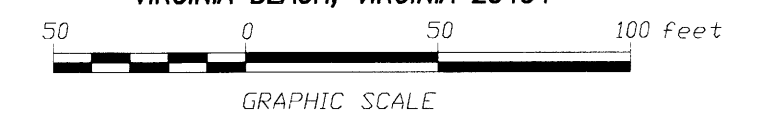
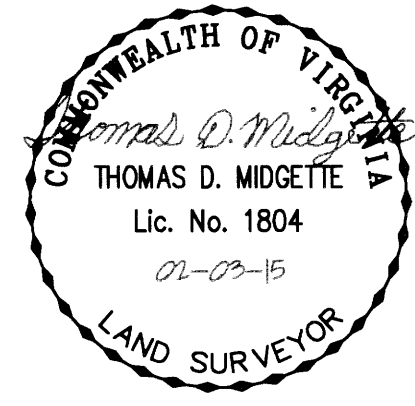
PARCEL A
N/F
YORKTOWN ARCH, LLC
TAX MAP 24-68-00-000A
GPIN: Q08b-3803-3232
ZONED PDR
(INST 130011191)

N/F
CHARLES C WOLFE, ET UX
DEED BOOK 751 PG 923
PLAT BOOK 11 PG 672
PARCEL 11B
GPIN Q08b-3416-3488
TAX MAP 24-68-00-002B
ZONED GB

N/F
CHARLES C WOLFE, ET UX
DEED BOOK 751 PG 923
PLAT BOOK 11 PG 672
PARCEL 11A
GPIN Q08b-3243-3411
TAX MAP 24-68-00-002A
ZONED GB

PLAT OF RIGHT-OF-WAY DEDICATION,
EASEMENT DEDICATION, AND EASEMENT VACATION
FOR
YORKTOWN ARCH, LLC AND
TRIPLE FEATURE ASSOCIATES,
A VIRGINIA LIMITED PARTNERSHIP
NELSON DISTRICT - COUNTY OF YORK, VIRGINIA
(SCALE: 1"=50') OCTOBER 6, 2014
SHEET 10 OF 18

NDI ENGINEERING COMPANY
BASGIER AND ASSOCIATES DIVISION
ENGINEERS-SURVEYORS-PLANNERS
572 CENTRAL DRIVE, SUITE 103
tele (757)431-2177, fax (757)431-2175
VIRGINIA BEACH, VIRGINIA 23454



-PROPERTY LINE CURVE TABLE-

CURVE	RADIUS	ARC LENGTH	CHORD LENGTH	CHORD BEARING	DELTA ANGLE	TANGENT
C1	300.00'	10.07'	10.07'	S 89°04'57" E	1°55'25"	5.04'
C2	25.00'	19.25'	18.78'	N 69°48'43" E	44°06'38"	10.13'
C3	52.00'	252.71'	-	-	278°26'52"	-
C4	25.00'	24.70'	23.71'	N 62°05'24" W	56°35'57"	13.46'
C5	250.00'	234.09'	225.63'	S 62°46'32" W	53°39'01"	126.42'
C6	300.00'	156.36'	154.59'	S 50°52'52" W	29°51'43"	80.00'
C7	25.00'	39.26'	35.35'	S 20°49'25" W	89°58'38"	24.99'
C8	25.00'	34.32'	31.69'	N 74°45'04" W	78°39'34"	24.99'
C9	250.00'	130.30'	128.84'	N 50°52'00" W	29°51'45"	66.67'

-PIN LEGEND-

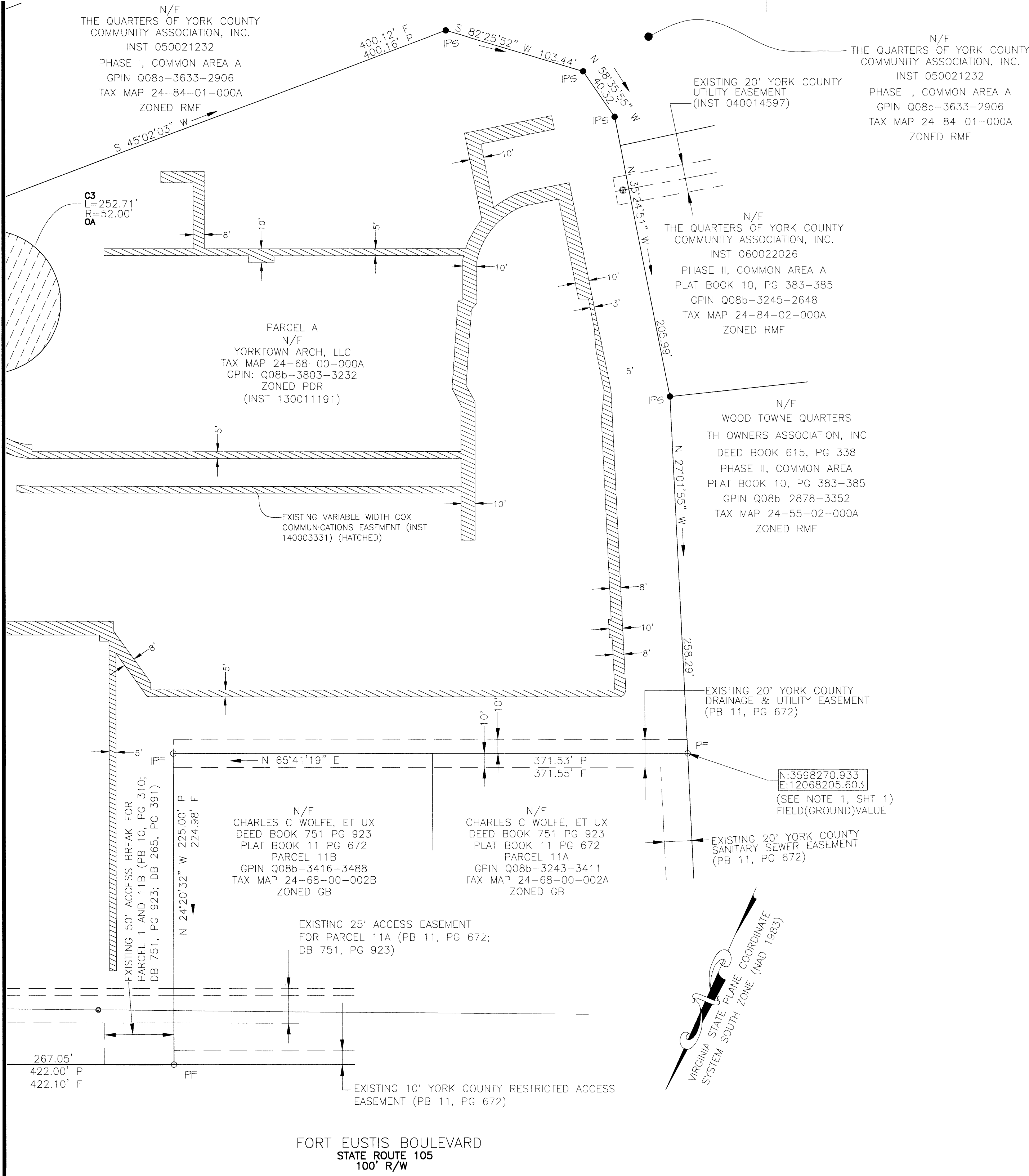
- IPF IRON PIN FOUND
- IPS IRON PIN SET
- CMF CONCRETED STEEL PIN FOUND
- CMS CONCRETED STEEL PIN SET
- DHS DRILL HOLE SET
- HTS HUB/TACK SET

SHEET 10 - EXISTING VARIABLE WIDTH COX COMMUNICATIONS EASEMENT

APPROVED:
YORK COUNTY BOARD OF SUPERVISORS
BY: [Signature]
PLAT APPROVING AGENT
DATE: 3.22.15

STATE OF VIRGINIA
COUNTY OF YORK
IN THE CLERK'S OFFICE OF THE CIRCUIT COURT THE COUNTY
OF YORK-POQUOSON, THE 17th DAY OF March, 2015
THIS MAP WAS PRESENTED AND ADMITTED TO RECORD AS THE
LAW DIRECTS AS INSTRUMENT NUMBER 150005166 @1:26pm
TESTE: Kristen N. Nelson
CLERK
BY: [Signature]

- MATCHLINE (SEE SHEET 9) -



FORT EUSTIS BOULEVARD
STATE ROUTE 105
100' R/W