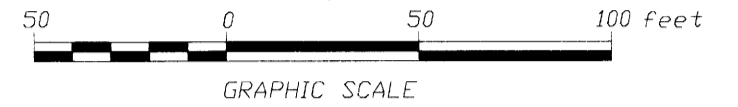
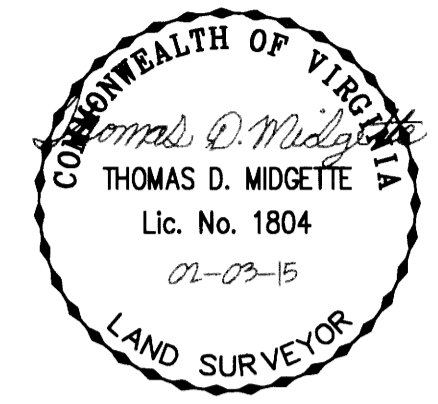


PLAT OF RIGHT-OF-WAY DEDICATION,  
EASEMENT DEDICATION, AND EASEMENT VACATION  
FOR  
YORKTOWN ARCH, LLC AND  
TRIPLE FEATURE ASSOCIATES,  
A VIRGINIA LIMITED PARTNERSHIP  
NELSON DISTRICT - COUNTY OF YORK, VIRGINIA  
(SCALE: 1"=50') OCTOBER 6, 2014  
SHEET 13 OF 18

**NDI ENGINEERING COMPANY**  
**BASGIER AND ASSOCIATES DIVISION**  
ENGINEERS-SURVEYORS-PLANNERS  
572 CENTRAL DRIVE, SUITE 103  
tele (757)431-2177, fax (757)431-2175  
VIRGINIA BEACH, VIRGINIA 23454



-PROPERTY LINE CURVE TABLE-

CURVE	RADIUS	ARC LENGTH	CHORD LENGTH	CHORD BEARING	DELTA ANGLE	TANGENT
C1	300.00'	10.07'	10.07'	S 89°04'57" E	1°55'25"	5.04'
C2	25.00'	19.25'	18.78'	N 69°48'43" E	44°06'38"	10.13'
C3	52.00'	252.71'	-	-	278°26'52"	-
C4	25.00'	24.70'	23.71'	N 62°05'24" W	56°35'57"	13.46'
C5	250.00'	234.09'	225.63'	S 62°46'32" W	53°39'01"	126.42'
C6	300.00'	156.36'	154.59'	S 50°52'52" W	29°51'43"	80.00'
C7	25.00'	39.26'	35.35'	S 20°49'25" W	89°58'38"	24.99'
C8	25.00'	34.32'	31.69'	N 74°45'04" V	78°39'34"	24.99'
C9	250.00'	130.30'	128.84'	N 50°52'00" W	29°51'45"	66.67'

-PIN LEGEND-

- IPF IRON PIN FOUND
- IPS IRON PIN SET
- CMF CONCRETED STEEL PIN FOUND
- CMS CONCRETED STEEL PIN SET
- DHS DRILL HOLE SET
- HTS HUB/TACK SET

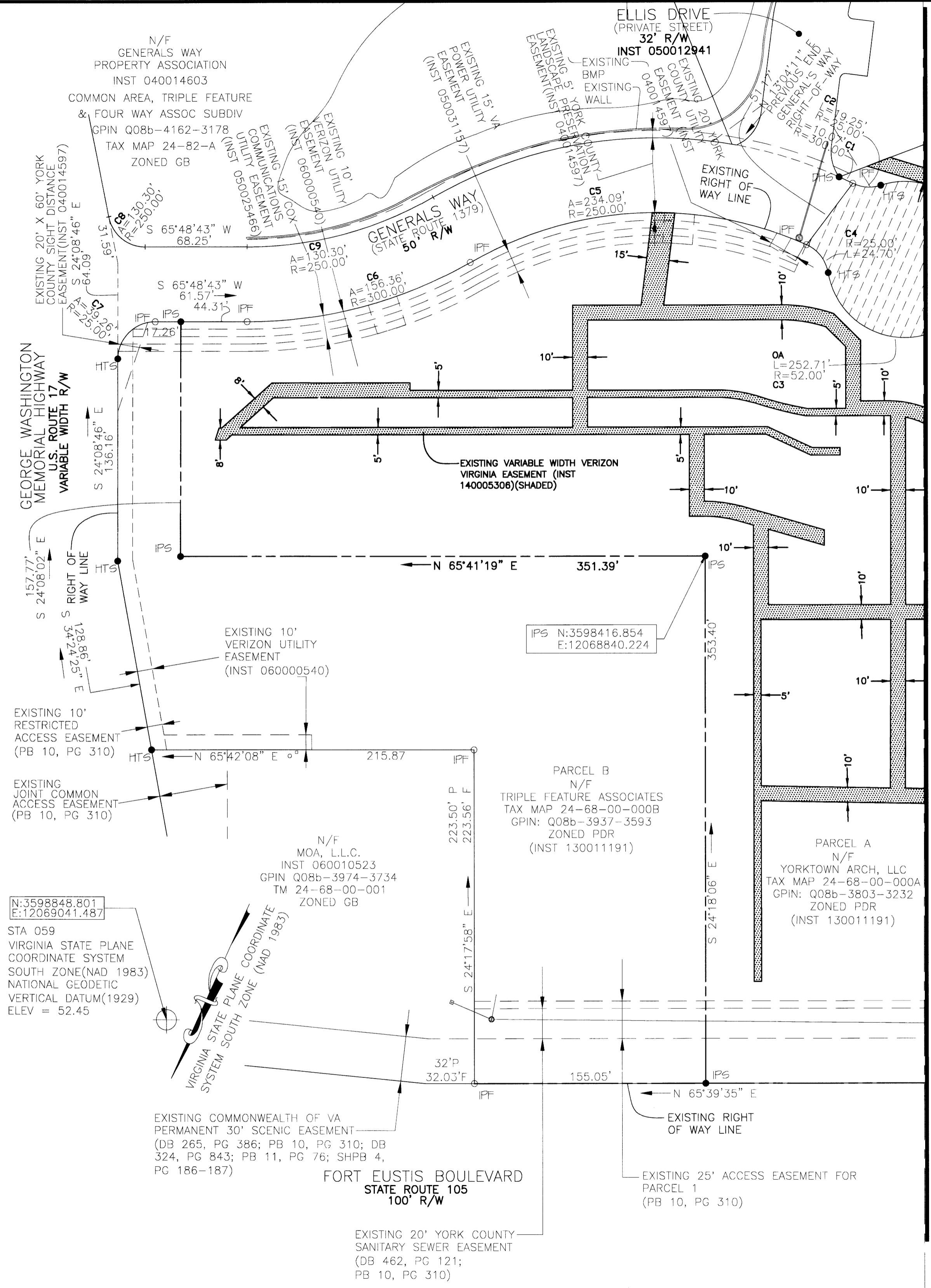
SHEET 13 - EXISTING VARIABLE WIDTH VERIZON VIRGINIA EASEMENT

APPROVED:  
YORK COUNTY BOARD OF SUPERVISORS  
BY: \_\_\_\_\_  
PLAT APPROVING AGENT  
DATE: \_\_\_\_\_

STATE OF VIRGINIA  
COUNTY OF YORK

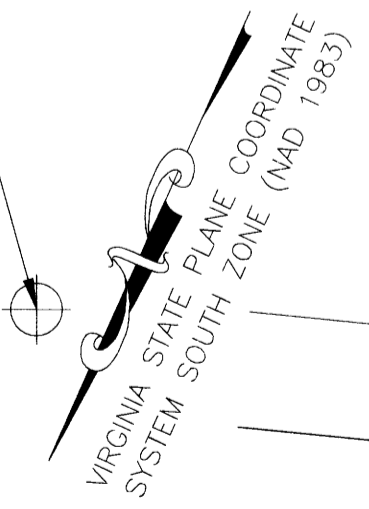
IN THE CLERK'S OFFICE OF THE CIRCUIT COURT THE COUNTY OF YORK-POQUOSON, THE 17th DAY OF March, 2015  
THIS MAP WAS PRESENTED AND ADMITTED TO RECORD AS THE LAW DIRECTS AS INSTRUMENT NUMBER 150003146 @1:26pm

TESTE: Christen N. Nelson  
CLERK  
BY: [Signature]



- MATCHLINE (SEE SHEET 14) -

STA 059  
VIRGINIA STATE PLANE  
COORDINATE SYSTEM  
SOUTH ZONE(NAD 1983)  
NATIONAL GEODETIC  
VERTICAL DATUM(1929)  
ELEV = 52.45



EXISTING COMMONWEALTH OF VA  
PERMANENT 30' SCENIC EASEMENT  
(DB 265, PG 386; PB 10, PG 310; DB  
324, PG 843; PB 11, PG 76; SHPB 4,  
PG 186-187)

FORT EUSTIS BOULEVARD  
STATE ROUTE 105  
100' R/W

EXISTING 20' YORK COUNTY  
SANITARY SEWER EASEMENT  
(DB 462, PG 121;  
PB 10, PG 310)