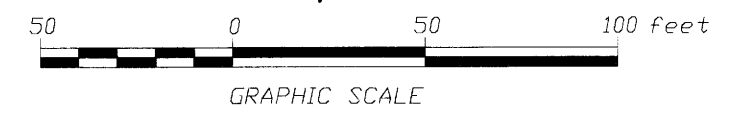
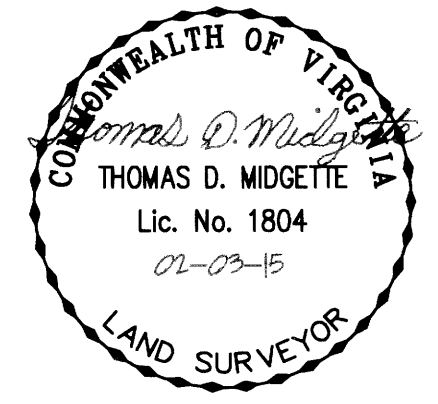


N/F
THE QUARTERS OF YORK COUNTY
COMMUNITY ASSOCIATION, INC.
INST 050021232
PHASE I, COMMON AREA A
GPIN Q08b-3633-2906
TAX MAP 24-84-01-000A
ZONED RMF

N/F
THE QUARTERS OF YORK COUNTY
COMMUNITY ASSOCIATION, INC.
INST 050021232
PHASE I, COMMON AREA A
GPIN Q08b-3633-2906
TAX MAP 24-84-01-000A
ZONED RMF

PLAT OF RIGHT-OF-WAY DEDICATION,
EASEMENT DEDICATION, AND EASEMENT VACATION
FOR
YORKTOWN ARCH, LLC AND
TRIPLE FEATURE ASSOCIATES,
A VIRGINIA LIMITED PARTNERSHIP
NELSON DISTRICT - COUNTY OF YORK, VIRGINIA
(SCALE: 1"=50') OCTOBER 6, 2014
SHEET 14 OF 18
NDI ENGINEERING COMPANY
BASGIER AND ASSOCIATES DIVISION
ENGINEERS-SURVEYORS-PLANNERS
572 CENTRAL DRIVE, SUITE 103
tele (757)431-2177, fax (757)431-2175
VIRGINIA BEACH, VIRGINIA 23454

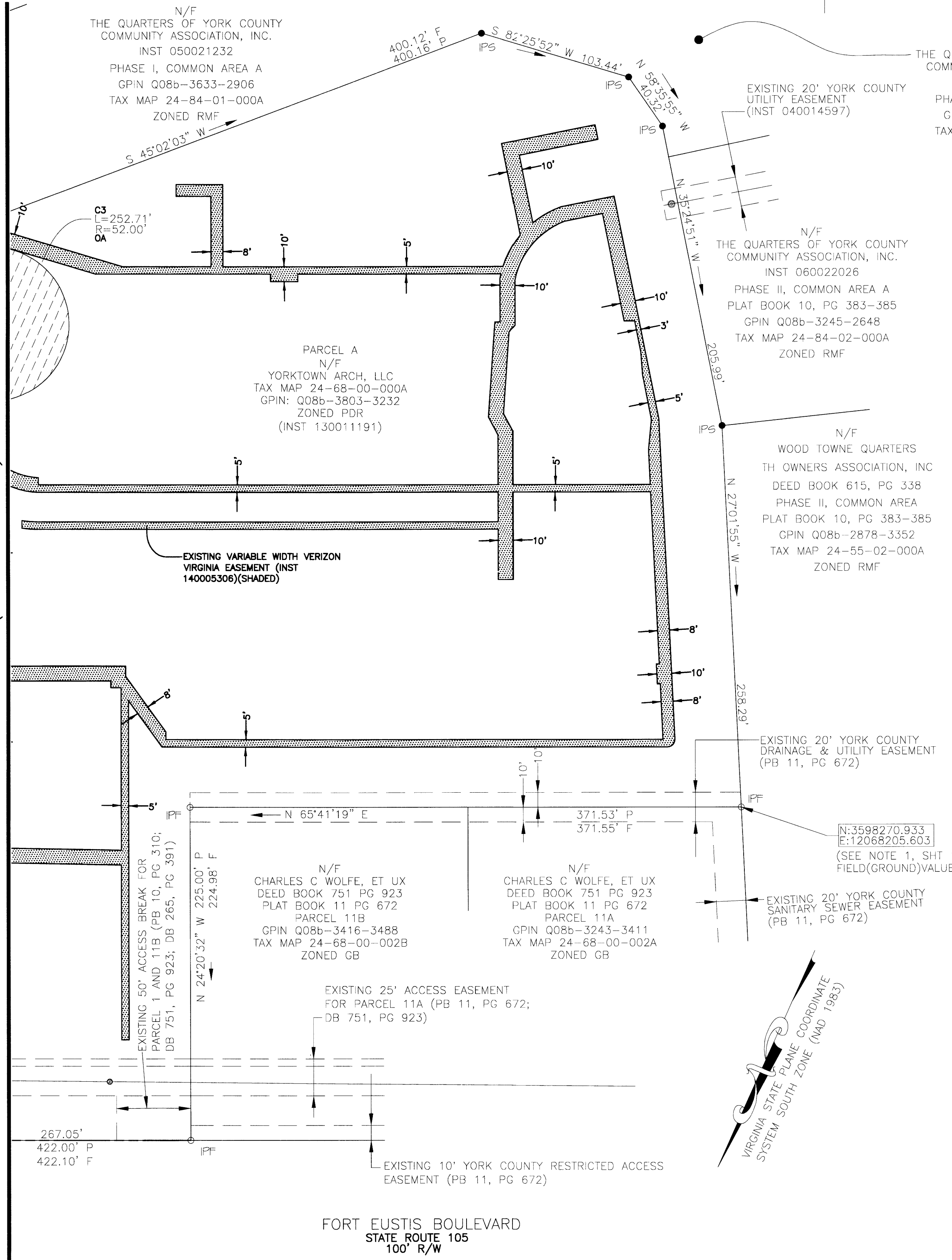


—PROPERTY LINE CURVE TABLE—

CURVE	RADIUS	ARC LENGTH	CHORD LENGTH	CHORD BEARING	DELTA ANGLE	TANGENT
C1	300.00'	10.07'	10.07'	S 89°04'57" E	1°55'25"	5.04'
C2	25.00'	19.25'	18.78'	N 69°48'43" E	44°06'38"	10.13'
C3	52.00'	252.71'	-	-	278°26'52"	-
C4	25.00'	24.70'	23.71'	N 62°05'24" W	56°35'57"	13.46'
C5	250.00'	234.09'	225.63'	S 62°46'32" W	53°39'01"	126.42'
C6	300.00'	156.36'	154.59'	S 50°52'52" W	29°51'43"	80.00'
C7	25.00'	39.26'	35.35'	S 20°49'25" W	89°58'38"	24.99'
C8	25.00'	34.32'	31.69'	N 74°45'04" W	78°39'34"	24.99'
C9	250.00'	130.30'	128.84'	N 50°52'00" W	29°51'45"	66.67'

- PIN LEGEND—
- IPF IRON PIN FOUND
 - IPS IRON PIN SET
 - CMF CONCRETED STEEL PIN FOUND
 - CMS CONCRETED STEEL PIN SET
 - DHS DRILL HOLE SET
 - HTS HUB/TACK SET

— MATCHLINE (SEE SHEET 13) —



SHEET 14 - EXISTING VARIABLE WIDTH VERIZON VIRGINIA EASEMENT

APPROVED:
YORK COUNTY BOARD OF SUPERVISORS
BY: _____
PLAT APPROVING AGENT
DATE: _____

STATE OF VIRGINIA
COUNTY OF YORK
IN THE CLERK'S OFFICE OF THE CIRCUIT COURT THE COUNTY
OF YORK-POQUOSON, THE 12th DAY OF March, 2015
THIS MAP WAS PRESENTED AND ADMITTED TO RECORD AS THE
LAW DIRECTS AS INSTRUMENT NUMBER 15000316w. @1:25pm
TESTE: Kristen N. NELSON
CLERK
BY: [Signature]



FORT EUSTIS BOULEVARD
STATE ROUTE 105
100' R/W