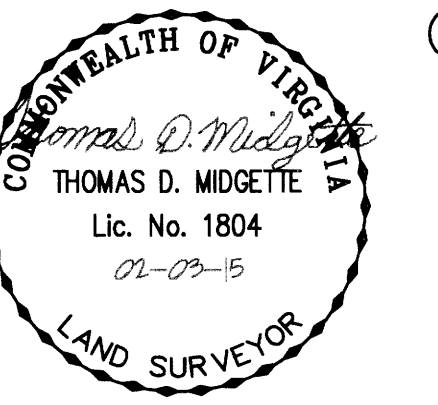


PLAT OF RIGHT-OF-WAY DEDICATION,
EASEMENT DEDICATION, AND EASEMENT VACATION
FOR
YORKTOWN ARCH, LLC AND
TRIPLE FEATURE ASSOCIATES,
A VIRGINIA LIMITED PARTNERSHIP
NELSON DISTRICT - COUNTY OF YORK, VIRGINIA
(SCALE: 1"=50') OCTOBER 6, 2014
SHEET 7 OF 18



NDI ENGINEERING COMPANY
BASGIER AND ASSOCIATES DIVISION
ENGINEERS-SURVEYORS-PLANNERS
572 CENTRAL DRIVE, SUITE 103
tele (757)431-2177, fax (757)431-2175
VIRGINIA BEACH, VIRGINIA 23454



GRAPHIC SCALE
-PROPERTY LINE CURVE TABLE-

CURVE	RADIUS	ARC LENGTH	CHORD LENGTH	CHORD BEARING	DELTA ANGLE	TANGENT
C1	300.00'	10.07'	10.07'	S 89°04'57" E	1°55'25"	5.04'
C2	25.00'	19.25'	18.78'	N 69°48'43" E	44°06'38"	10.13'
C3	52.00'	252.71'	-	-	278°26'52"	-
C4	25.00'	24.70'	23.71'	N 62°05'24" W	56°35'57"	13.46'
C5	250.00'	234.09'	225.63'	S 62°46'32" W	53°39'01"	126.42'
C6	300.00'	156.36'	154.59'	S 50°52'52" W	29°51'43"	80.00'
C7	25.00'	39.26'	35.35'	S 20°49'25" W	89°58'38"	24.99'
C8	25.00'	34.32'	31.69'	N 74°45'04" W	78°39'34"	24.99'
C9	250.00'	130.30'	128.84'	N 50°52'00" W	29°51'45"	66.67'

LINE TABLE FOR EXISTING PRIVATE INGRESS AND EGRESS EASEMENT

LINE	BEARING	DISTANCE
L1	N 24°18'41" W	12.00'
L2	N 65°41'19" E	32.70'
L3	N 08°26'42" W	23.00'
L4	S 65°41'55" W	314.07'
L5	N 24°18'06" W	21.96'
L6	N 65°40'21" E	24.00'
L7	N 65°41'19" E	62.85'
L8	N 24°18'41" W	5.00'
L9	N 65°41'19" E	180.00'
L10	S 24°18'41" E	5.00'
L11	N 30°42'04" W	96.76'
L12	N 65°42'08" E	23.88'
L13	S 30°42'04" E	111.31'
L14	S 24°18'41" E	57.47'
L15	S 08°26'43" E	64.10'
L16	S 65°47'11" W	43.39'

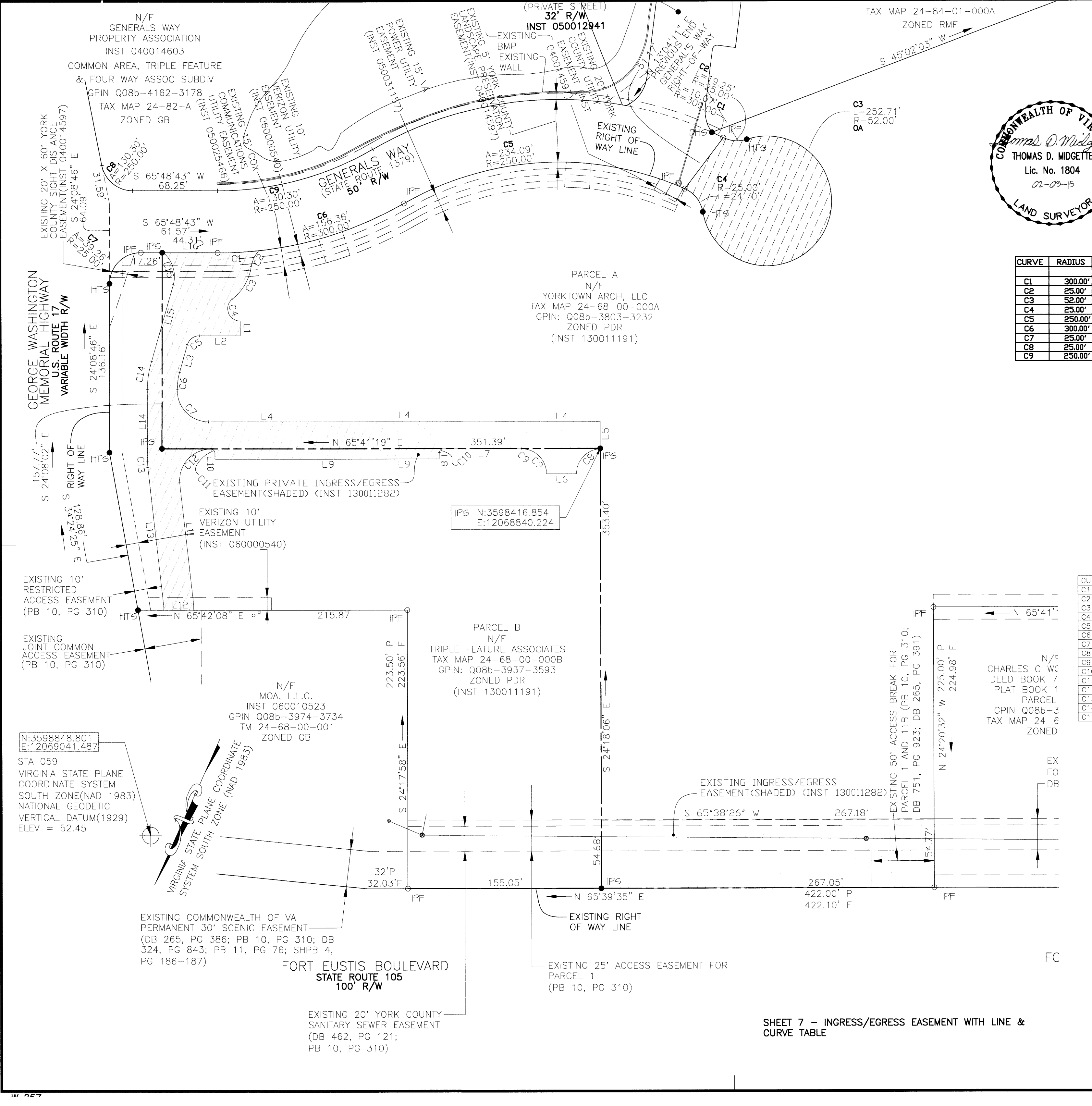
CURVE TABLE FOR EXISTING PRIVATE INGRESS AND EGRESS EASEMENT

CURVE	RADIUS	ARC	CHORD	CHD BRG	DELTA
C1	300.00'	33.09'	33.08'	S62°38'51" W	6°19'14"
C2	25.00'	14.44'	14.24'	N00°55'26" E	33°06'12"
C3	41.00'	30.80'	30.08'	N05°53'44" E	43°02'49"
C4	10.00'	24.74'	18.89'	N43°26'46" W	141°43'49"
C5	10.00'	12.94'	12.05'	N28°37'18" E	74°08'01"
C6	50.00'	13.85'	13.80'	N16°22'42" W	15°51'59"
C7	25.04'	40.22'	36.03'	N68°14'52" W	92°01'45"
C8	20.00'	30.56'	27.67'	N19°28'16" E	87°32'45"
C9	20.00'	31.42'	28.29'	S69°18'23" E	90°00'35"
C10	3.00'	4.71'	4.24'	N20°41'19" E	90°00'00"
C11	3.00'	4.71'	4.24'	S69°18'41" E	90°00'00"
C12	25.02'	41.57'	36.95'	N18°44'38" E	95°11'51"
C13	46.00'	5.13'	5.13'	S27°47'04" E	6°23'23"
C14	75.02'	22.91'	22.83'	S15°33'32" E	17°30'00"
C15	25.00'	28.33'	27.09'	S41°15'06" E	65°36'49"

- PIN LEGEND-**
- IPF IRON PIN FOUND
 - IPS IRON PIN SET
 - CMF CONCRETED STEEL PIN FOUND
 - CMS CONCRETED STEEL PIN SET
 - DHS DRILL HOLE SET
 - HTS HUB/TACK SET

APPROVED:
YORK COUNTY BOARD OF SUPERVISORS
BY: _____
PLAT APPROVING AGENT
DATE: _____

STATE OF VIRGINIA
COUNTY OF YORK
IN THE CLERK'S OFFICE OF THE CIRCUIT COURT THE COUNTY OF YORK-POQUOSON, THE 12th DAY OF March, 2015
THIS MAP WAS PRESENTED AND ADMITTED TO RECORD AS THE LAW DIRECTS AS INSTRUMENT NUMBER 150005166. 01:26 PM
TESTE: Kristen N. Nelson
CLERK
BY: _____



SHEET 7 - INGRESS/EGRESS EASEMENT WITH LINE & CURVE TABLE