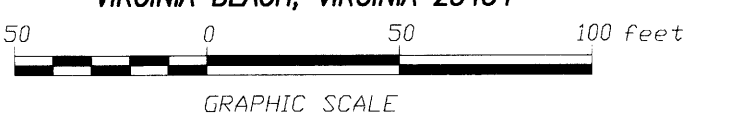
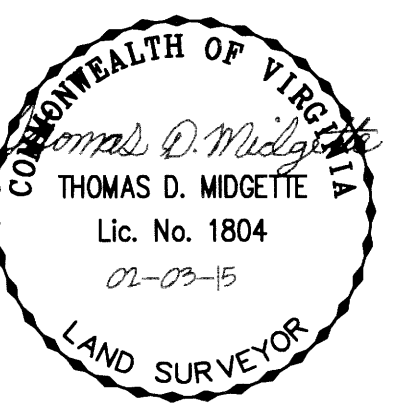


PLAT OF RIGHT-OF-WAY DEDICATION,
EASEMENT DEDICATION, AND EASEMENT VACATION
FOR
YORKTOWN ARCH, LLC AND
TRIPLE FEATURE ASSOCIATES,
A VIRGINIA LIMITED PARTNERSHIP
NELSON DISTRICT - COUNTY OF YORK, VIRGINIA
(SCALE: 1"=50') OCTOBER 6, 2014
SHEET 8 OF 18

NDI ENGINEERING COMPANY
BASGIER AND ASSOCIATES DIVISION
ENGINEERS-SURVEYORS-PLANNERS
572 CENTRAL DRIVE, SUITE 103
tele (757)431-2177, fax (757)431-2175
VIRGINIA BEACH, VIRGINIA 23454



-PROPERTY LINE CURVE TABLE-

CURVE	RADIUS	ARC LENGTH	CHORD LENGTH	CHORD BEARING	DELTA ANGLE	TANGENT
C1	300.00'	10.07'	10.07'	S 89°04'57" E	1°55'25"	5.04'
C2	25.00'	19.25'	18.78'	N 69°48'43" E	44°06'38"	10.13'
C3	52.00'	252.71'	-	-	278°26'52"	-
C4	25.00'	24.70'	23.71'	N 62°05'24" W	56°35'57"	13.46'
C5	250.00'	234.09'	225.63'	S 62°46'32" W	53°39'01"	126.42'
C6	300.00'	156.36'	154.59'	S 50°52'52" W	29°51'43"	80.00'
C7	25.00'	39.26'	35.35'	S 20°49'25" W	89°58'38"	24.99'
C8	25.00'	34.32'	31.62'	N 74°45'04" W	78°39'34"	24.99'
C9	250.00'	130.30'	128.84'	N 50°52'00" W	29°51'45"	66.67'

CURVE TABLE FOR EXISTING PRIVATE PARKING EASEMENT

CURVE	RADIUS	ARC LENGTH	CHORD	CHD BRG	DELTA	TANGENT
C1	2.50'	3.93'	3.54'	S69°18'41"E	90°00'00"	5.04'
C2	2.50'	3.93'	3.54'	N20°41'19"E	90°00'00"	10.13'

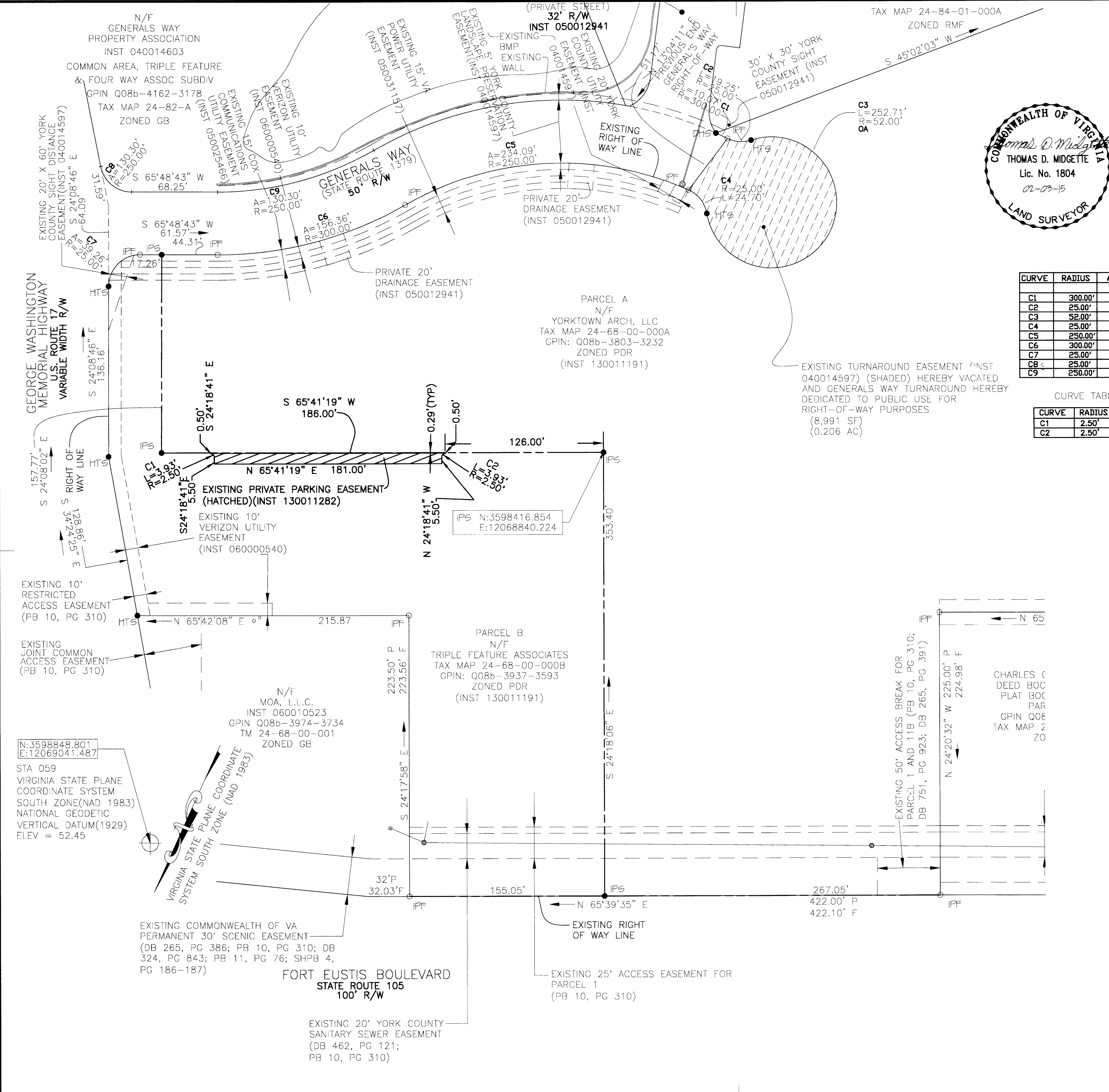
-PIN LEGEND-

- IPF IRON PIN FOUND
- IPS IRON PIN SET
- CMF CONCRETED STEEL PIN FOUND
- CMS CONCRETED STEEL PIN SET
- DHS DRILL HOLE SET
- HTS HUB/TACK SET

SHEET 8 - PROPOSED R/W DEDICATION AND EXISTING PRIVATE PARKING EASEMENT WITH LINE & CURVE TABLE

APPROVED:
YORK COUNTY BOARD OF SUPERVISORS
BY: _____
PLAT APPROVING AGENT
DATE: _____

STATE OF VIRGINIA
COUNTY OF YORK
IN THE CLERK'S OFFICE OF THE CIRCUIT COURT THE COUNTY OF YORK-POQUOSON, THE DAY OF 10th Month, 2015
THIS MAP WAS PRESENTED AND ADMITTED TO RECORD AS THE LAW DIRECTS AS INSTRUMENT NUMBER 1000516 @ 11:25pm
TESTE: Kristen N. Nelson
CLERK
BY: [Signature]



STA 059
VIRGINIA STATE PLANE
COORDINATE SYSTEM
SOUTH ZONE(NAD 1983)
NATIONAL GEODETIC
VERTICAL DATUM(1929)
ELEV = 52.45

N/F
MOA, L.L.C.
INST 060010523
GPIN Q08b-3974-3734
TM 24-68-00-001
ZONED GB

PARCEL B
N/F
TRIPLE FEATURE ASSOCIATES
TAX MAP 24-68-00-000B
GPIN: Q08b-3937-3593
ZONED PDR
(INST 130011191)

PARCEL A
N/F
YORKTOWN ARCH, LLC
TAX MAP 24-68-00-000A
GPIN: Q08b-3803-3232
ZONED PDR
(INST 130011191)

EXISTING TURNAROUND EASEMENT (INST 040014597) (SHADED) HEREBY VACATED AND GENERALS WAY TURNAROUND HEREBY DEDICATED TO PUBLIC USE FOR RIGHT-OF-WAY PURPOSES
(8,991 SF)
(0.206 AC)

EXISTING COMMONWEALTH OF VA PERMANENT 30' SCENIC EASEMENT (DB 265, PG 386; PB 10, PG 310; DB 324, PG 843; PB 11, PG 76; SHPB 4, PG 186-187)

FORT EUSTIS BOULEVARD
STATE ROUTE 105
100' R/W

EXISTING 20' YORK COUNTY SANITARY SEWER EASEMENT (DB 462, PG 121; PB 10, PG 310)

EXISTING 25' ACCESS EASEMENT FOR PARCEL 1 (PB 10, PG 310)

EXISTING 50' ACCESS BREAK FOR PARCEL 1 AND 11B (PB 10, PG 310; DB 751, PG 923; DB 265, PG 391)

CHARLES C DEED BOC
PLAT BOC
PAR
GPIN Q0E
TAX MAP 2 Z0