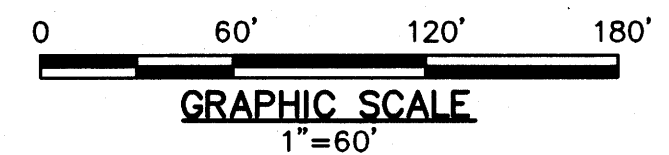


SUBDIVISION OF
NELSON'S GRANT
PHASE THREE
NELSON MAGISTERIAL DISTRICT
COUNTY OF YORK, VIRGINIA
SCALE: 1"=60' DATE: MARCH 27, 2014
SHEET 3 OF 3

DAVIS & ASSOCIATES, P.C.
LAND SURVEYORS AND PLANNERS
3630 GEORGE WASHINGTON MEMORIAL HIGHWAY
YORKTOWN, VIRGINIA 23693
(757)867-8583



- SYMBOLS -

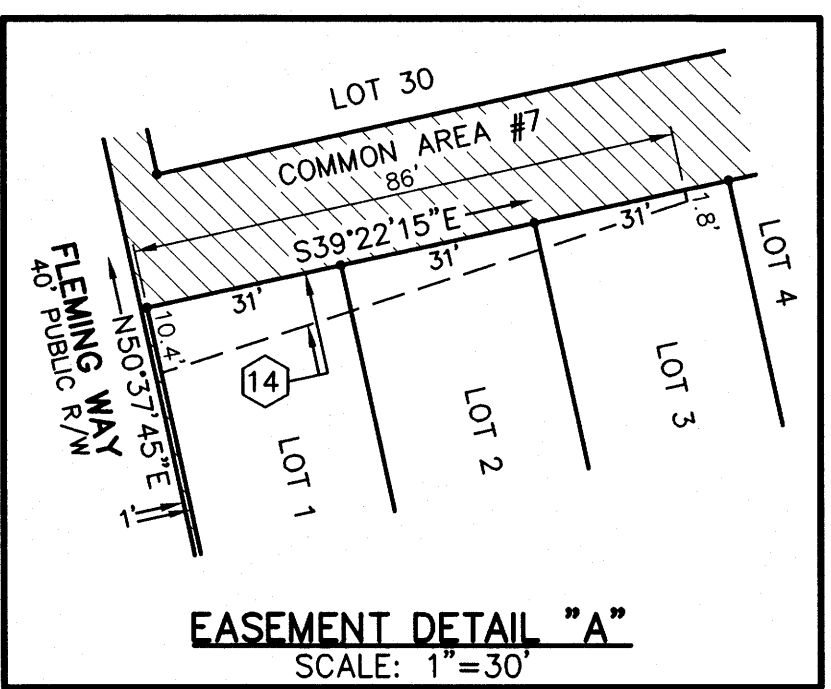
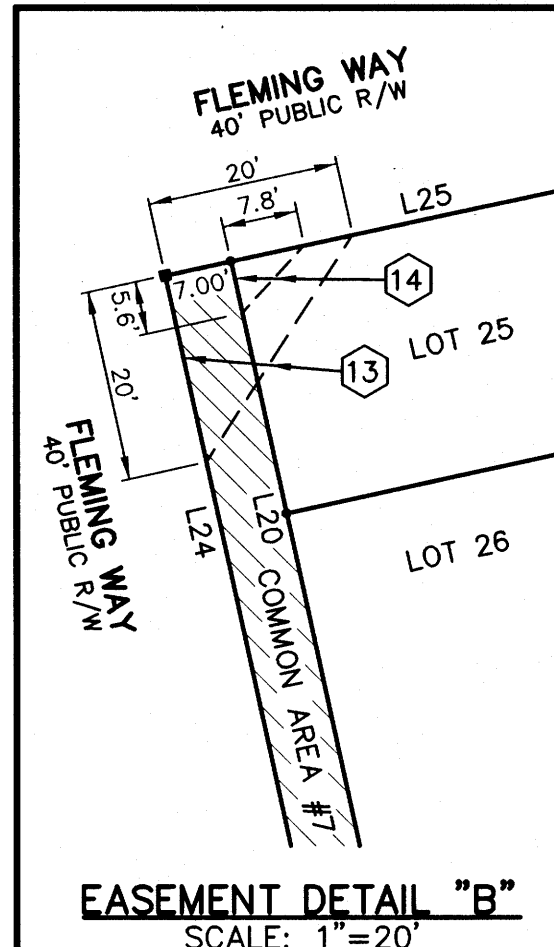
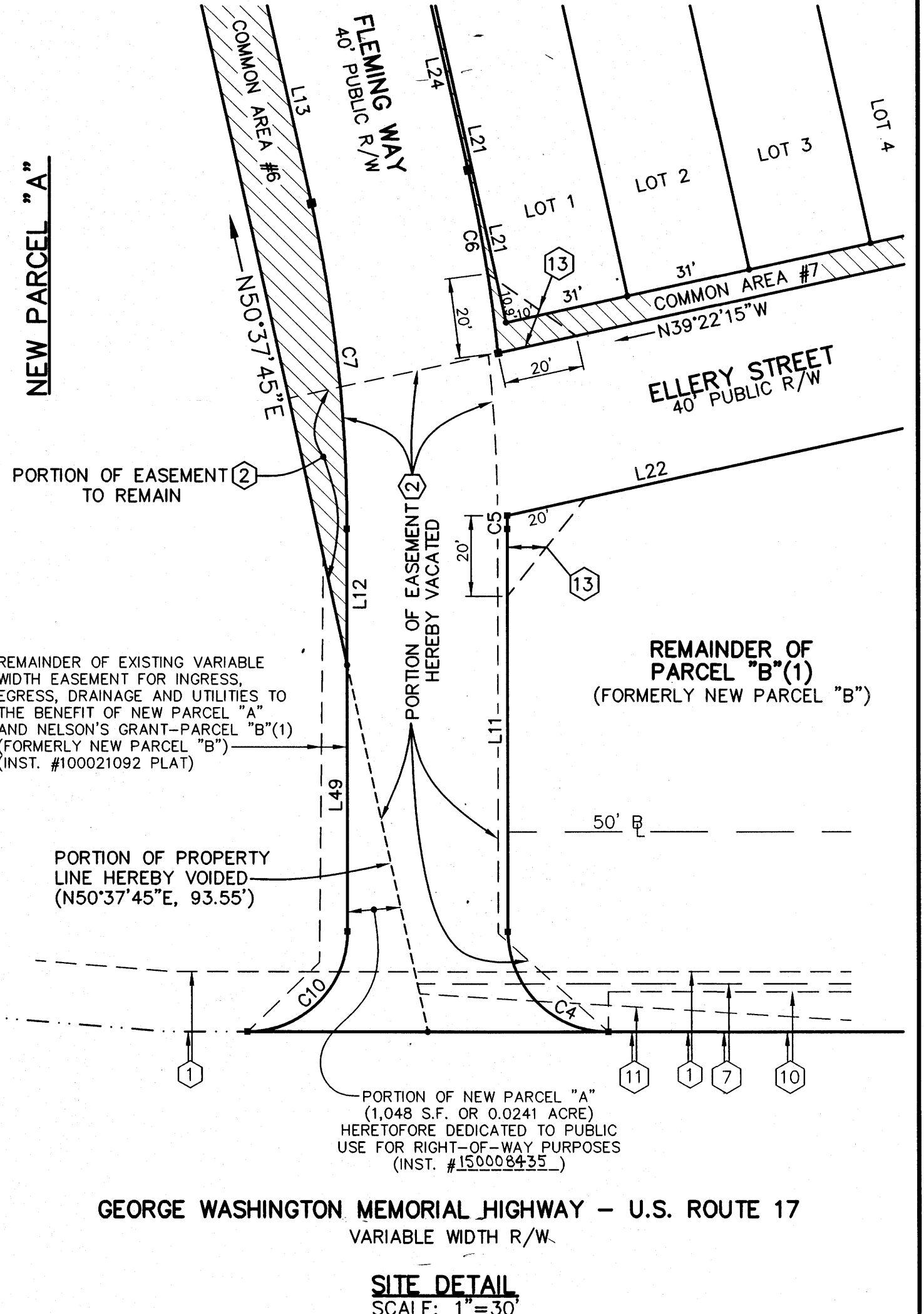
- DENOTES MINIMUM BUILDING SETBACK LINES
- DENOTES IRON PIPE FOUND
- DENOTES IRON ROD FOUND
- DENOTES IRON ROD TO BE SET AT ALL PROPERTY LINE JUNCTURES
- DENOTES CONCRETE MONUMENT FOUND
- DENOTES CONCRETE MONUMENT TO BE SET
- DENOTES COMMON AREAS TO BE CONVEYED TO NELSON'S GRANT HOMEOWNERS ASSOCIATION

CURVE DATA TABLE

NUMBER	DELTA	RADIUS	LENGTH	TANGENT	CH. LENGTH	CH. DIRECTION
C1	41°32'35"	61.42'	44.53'	23.30'	43.56'	N03°42'12"W
C2	12°22'30"	175.00'	37.80'	18.97'	37.72'	N56°49'00"E
C3	89°58'11"	25.00'	39.26'	24.99'	35.35'	S72°00'40"E
C4	90°00'00"	25.00'	39.27'	25.00'	35.36'	N17°58'36"E
C5	00°27'31"	420.00'	3.36'	1.68'	3.36'	N62°44'41"E
C6	06°21'27"	420.00'	46.60'	23.33'	46.58'	N53°48'28"E
C7	12°20'41"	380.00'	81.87'	41.10'	81.72'	S56°48'05"W
C8	90°00'00"	25.00'	39.27'	25.00'	35.36'	S72°01'34"E
C9	12°20'41"	400.00'	86.18'	43.26'	86.02'	N56°48'05"E
C10	90°00'00"	25.00'	39.27'	25.00'	35.36'	S72°01'34"E

LINE DATA TABLE

LINE	BEARING	DISTANCE	LINE	BEARING	DISTANCE
L1	N62°58'27"E	107.83'	L25	S39°22'15"E	249.00'
L2	S50°12'12"W	51.89'	L26	N62°58'26"E	125.14'
L3	N39°22'15"W	35.00'	L27	N50°37'45"E	250.49'
L4	S50°37'45"W	20.00'	L28	S39°22'15"E	269.00'
L5	S39°22'15"E	35.00'	L29	N39°22'15"W	225.07'
L6	S50°37'45"W	115.00'	L30	S50°37'45"W	1.50'
L7	N39°22'15"W	49.50'	L31	S39°22'15"E	4.00'
L8	S50°37'45"W	40.00'	L32	N50°37'45"E	3.00'
L9	S39°22'15"E	147.11'	L33	S39°22'15"E	4.00'
L10	S63°00'15"W	3.84'	L34	S50°37'45"W	1.50'
L11	N62°58'26"E	100.14'	L35	S39°22'15"E	7.00'
L12	N62°58'26"E	33.75'	L36	N39°22'15"W	1.50'
L13	S50°37'45"W	270.49'	L37	S50°37'45"W	4.00'
L14	N50°37'45"E	69.48'	L38	S39°22'15"E	3.00'
L15	S70°18'03"E	69.12'	L39	S50°37'45"W	4.00'
L16	S39°22'15"E	134.71'	L40	N39°22'15"W	1.50'
L17	N50°37'45"E	70.00'	L41	S50°37'45"W	7.00'
L18	S50°37'45"W	142.00'	L42	N39°22'15"W	1.50'
L19	N39°22'15"W	70.00'	L43	S50°37'45"W	4.00'
L20	N50°37'45"E	142.00'	L44	S39°22'15"E	3.00'
L21	N50°37'45"E	108.00'	L45	S50°37'45"W	4.00'
L22	S39°22'15"E	208.51'	L46	N39°22'15"W	1.50'
L23			L47	S50°37'45"W	7.00'
L24	N50°37'45"E	230.49'	L48		
			L49	N62°58'26"E	66.39'



APPROVED
YORK COUNTY BOARD OF SUPERVISORS

BY: Al Maddalena
PLAT APPROVING AGENT

DATE: 5/21/15

STATE OF VIRGINIA
COUNTY OF YORK
IN THE CLERK'S OFFICE OF THE YORK COUNTY CIRCUIT COURT THIS 28th DAY OF May 2015, THIS MAP WAS PRESENTED AND ADMITTED TO RECORD AS THE LAW DIRECTS AS INSTRUMENT # 150008832

TESTE: Kristen N. Nelson 9:57 am
CLERK

BY: Josia Sogder, D.O.