

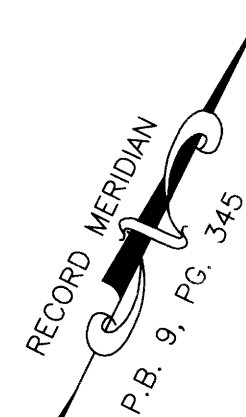
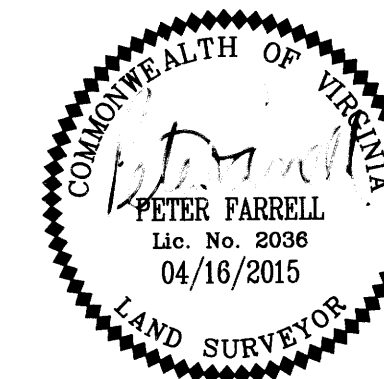
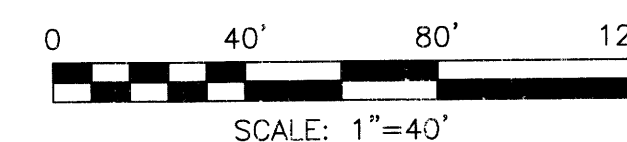
**RESUBDIVISION OF
LOT 8, GREENE INDUSTRIAL PARK
& LOT 1,
W.P. GREENE INDUSTRIAL PARK,
SECTION TWO
NELSON DISTRICT, YORK COUNTY, VIRGINIA**

DATE: 04/16/2015

SHEET 2 OF 2

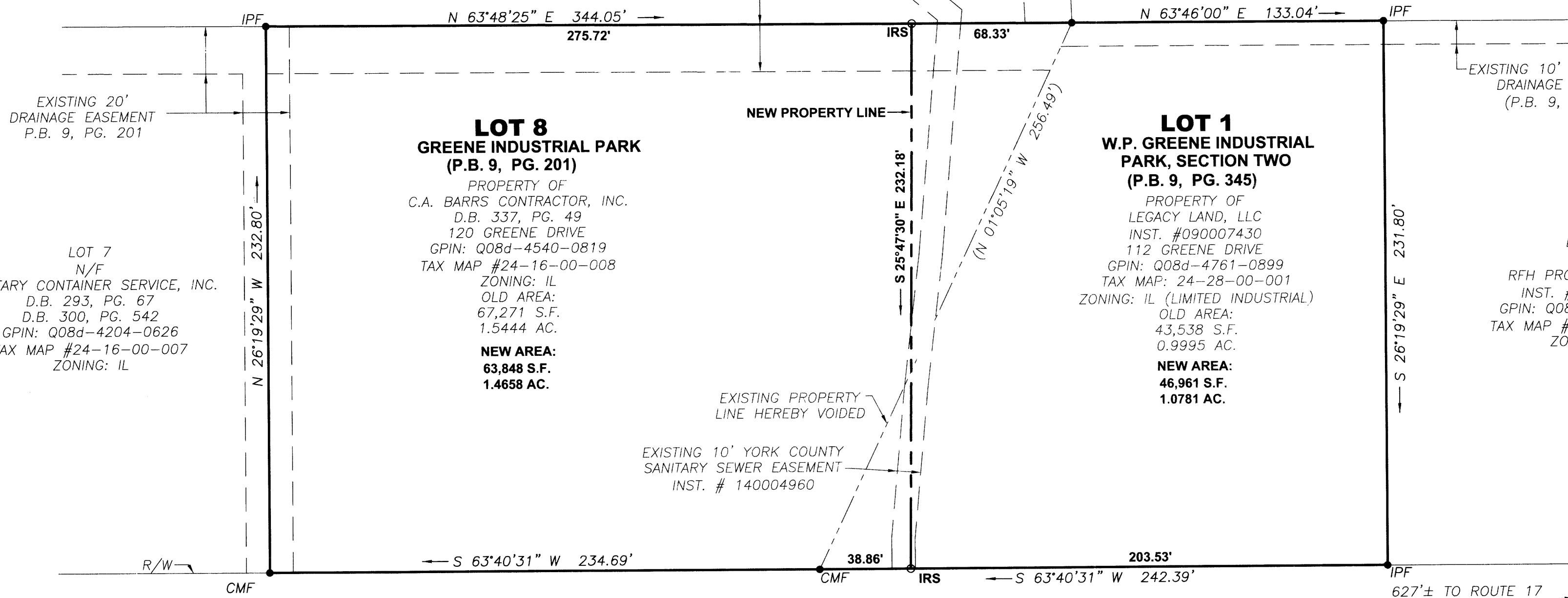
LRI
LANDTECH
RESOURCES, INC.
ENGINEERING • SURVEYING • GPS

3925 Midlands Road Williamsburg, VA 23188
Ph: (757) 565-1677 Fax: (757) 565-0782
web: landtechresources.com



N/F
C.A. BARRS CONTRACTOR, INC.
D.B. 333, PG. 496
GPIN: Q08d-4391-0968
TAX MAP #24D-01-00-001
ZONING: IL

EXISTING 20' COMMONWEALTH
OF VIRGINIA DRAINAGE EASEMENT
(D.B. 392, PG. 94)



LOT 7
N/F
SANITARY CONTAINER SERVICE, INC.
D.B. 293, PG. 67
D.B. 300, PG. 542
GPIN: Q08d-4204-0626
TAX MAP #24-16-00-007
ZONING: IL

**LOT 8
GREENE INDUSTRIAL PARK
(P.B. 9, PG. 201)**

PROPERTY OF
C.A. BARRS CONTRACTOR, INC.
D.B. 337, PG. 49
120 GREENE DRIVE
GPIN: Q08d-4540-0819
TAX MAP #24-16-00-008
ZONING: IL
OLD AREA:
67,271 S.F.
1.5444 AC.
**NEW AREA:
63,848 S.F.
1.4658 AC.**

**LOT 1
W.P. GREENE INDUSTRIAL
PARK, SECTION TWO
(P.B. 9, PG. 345)**

PROPERTY OF
LEGACY LAND, LLC
INST. #090007430
112 GREENE DRIVE
GPIN: Q08d-4761-0899
TAX MAP: 24-28-00-001
ZONING: IL (LIMITED INDUSTRIAL)
OLD AREA:
43,538 S.F.
0.9995 AC.
**NEW AREA:
46,961 S.F.
1.0781 AC.**

LOT 2
N/F
RFH PROPERTIES, LLC
INST. #060003756
GPIN: Q08d-4929-0990
TAX MAP #24-28-00-002
ZONING: IL

**GREENE DRIVE - ROUTE 1290
(50' R/W)**

AREA CALCULATIONS

LOT 8 OLD AREA	67,271 S.F. 1.5444 AC.
LOT 8 NEW AREA	63,848 S.F. 1.4658 AC.
LOT 1 OLD AREA	43,538 S.F. 0.9995 AC.
LOT 1 NEW AREA	46,961 S.F. 1.0781 AC.

TOTAL AREA=2.5439 AC. (110,809 S.F.)

LEGEND

CMF = CONCRETE MONUMENT FOUND
IPF = IRON PIPE FOUND
IRS = IRON ROD SET
R/W = RIGHT OF WAY LINE

**APPROVED:
YORK COUNTY BOARD OF SUPERVISORS**

BY: *Al Maddalena*
PLAT APPROVING AGENT

DATE: 5/27/15

STATE OF VIRGINIA
COUNTY OF YORK
IN THE CLERK'S OFFICE OF THE CIRCUIT COURT FOR THE
COUNTY OF YORK-POQUOSON THE 25th DAY OF May
2015. THIS PLAT WAS PRESENTED AND ADMITTED TO RECORD
AS THE LAW DIRECTS AS INSTRUMENT NO. 150008836

TESTE: *Kristen N. Nelson* 9:55 am
CLERK

BY: *Chris Brogden, D.E.*