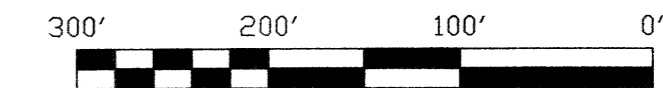
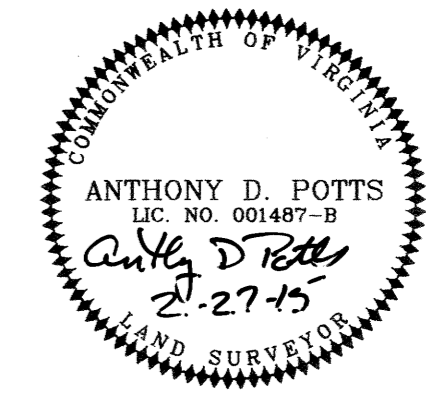


PLAT OF RIGHT-OF-WAY DEDICATION FOR  
**ROSE HILL SUBDIVISION**  
 NELSON DISTRICT  
 YORK COUNTY, VIRGINIA

ADPA **A.D. POTTS & ASSOCIATES, INC.**  
 11524 JEFFERSON AVENUE  
 NEWPORT NEWS, VIRGINIA 23601  
 PHONE: (757) 595-4610  
 1" = 100' FEBRUARY 27, 2015  
 SHEET 2 OF 3



NEWPORT NEWS WATERWORKS BOUNDARY  
 BY THE SURINE GROUP, LTD. (4/6/99)  
 P.B. 11 PG. 428

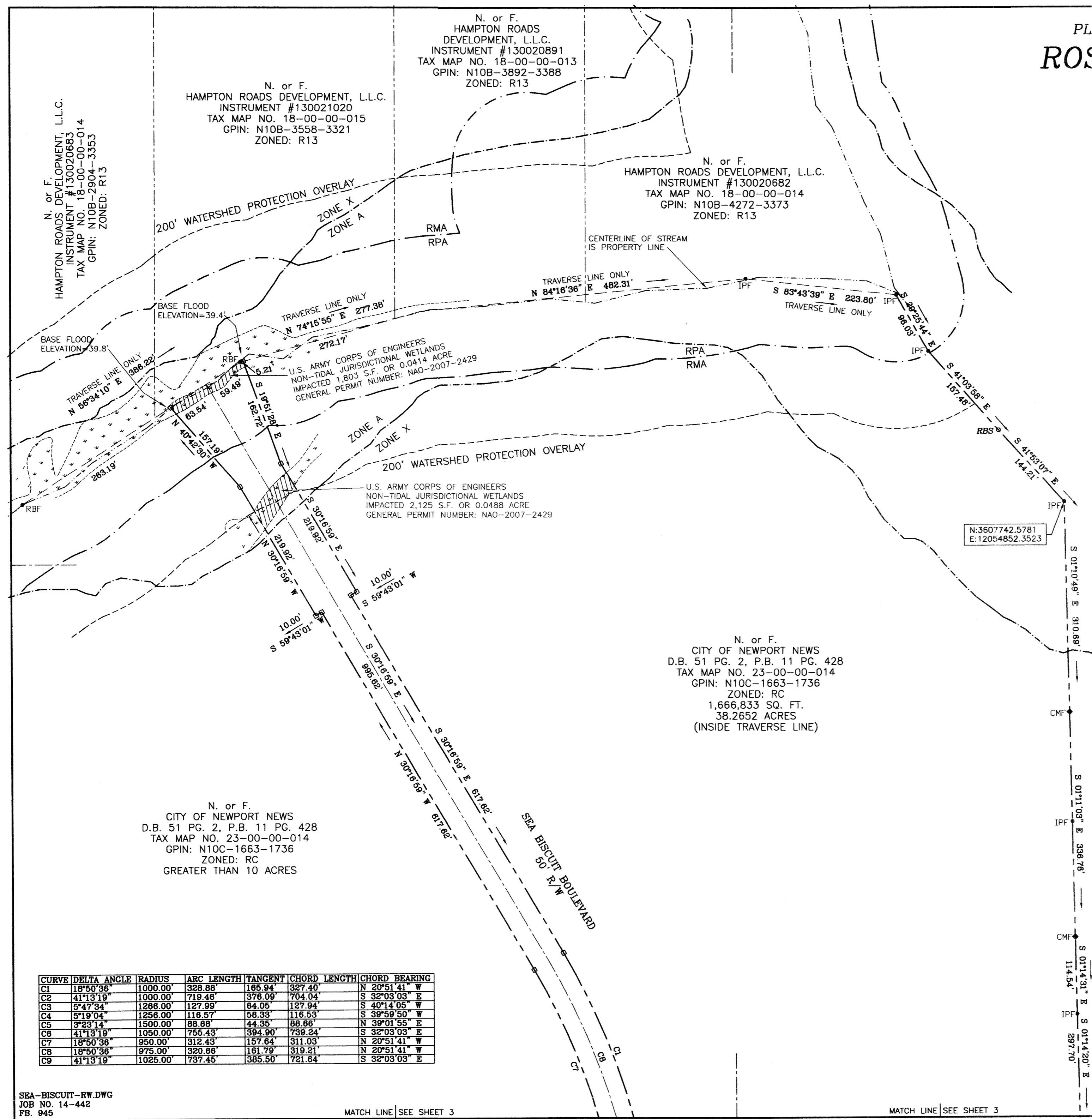


UNITED STATES  
 DEPARTMENT OF INTERIOR  
 TAX MAP NO. 18-00-00-023  
 GPIN: N11D-4944-1325  
 ZONED: RC

**APPROVED**  
 YORK COUNTY BOARD OF SUPERVISORS  
 BY: *L. Maddalena*  
 PLAT APPROVING AGENT  
 DATE: 2/27/15

STATE OF VIRGINIA  
 COUNTY OF YORK  
 IN THE CLERK'S OFFICE OF THE CIRCUIT COURT  
 FOR THE COUNTY OF YORK-POQUOSON, ON  
 THIS 21<sup>st</sup> DAY OF August, 2015,  
 THIS MAP WAS PRESENTED AND ADMITTED TO RECORD  
 AS THE LAW DIRECTS, AS INSTRUMENT  
 NUMBER 150015145 **8:23 AM**  
 TESTE: *Kristen N. Nelson*  
 CLERK  
 BY: *Valerie Babbin DC*  
 DEPUTY CLERK

FILE NO. 10-1223



CURVE	DELTA ANGLE	RADIUS	ARC LENGTH	TANGENT	CHORD LENGTH	CHORD BEARING
C1	18°50'36"	1000.00'	328.88'	185.94'	327.40'	N 20°51'41" W
C2	41°13'19"	1000.00'	719.46'	378.09'	704.04'	S 32°03'03" E
C3	5°47'34"	1288.00'	127.99'	84.05'	127.94'	S 40°14'05" W
C4	5°19'04"	1256.00'	116.57'	56.33'	116.53'	S 39°59'50" W
C5	3°23'14"	1500.00'	88.68'	44.35'	88.66'	N 39°01'55" E
C6	41°13'19"	1050.00'	755.43'	394.90'	739.24'	S 32°03'03" E
C7	18°50'36"	950.00'	312.43'	157.64'	311.03'	N 20°51'41" W
C8	18°50'36"	975.00'	320.68'	161.79'	319.21'	N 20°51'41" W
C9	41°13'19"	1025.00'	737.45'	385.50'	721.64'	S 32°03'03" E

SEA-BISCUIT-RW.DWG  
 JOB NO. 14-442  
 FB. 945

MATCH LINE SEE SHEET 3

MATCH LINE SEE SHEET 3