

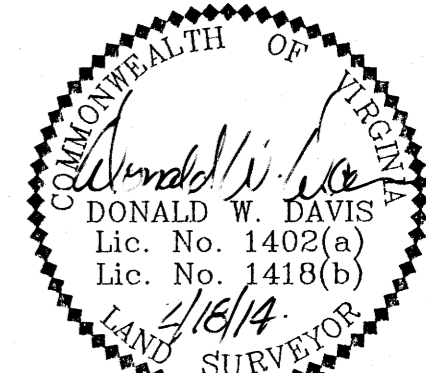
CORRECTED
 PLAT OF BOUNDARY LINE ADJUSTMENT
 AND RIGHT-OF-WAY DEDICATION
 PROPERTY OF
 GREENFIELD HOMES CORPORATION,
 A VIRGINIA CORPORATION
 NELSON DISTRICT - COUNTY OF YORK, VIRGINIA
 FEBRUARY 18, 2014
 (CORRECTED: 21 SEPT. 2015)

DAVIS & ASSOCIATES, P.C.
 SURVEYORS - PLANNERS

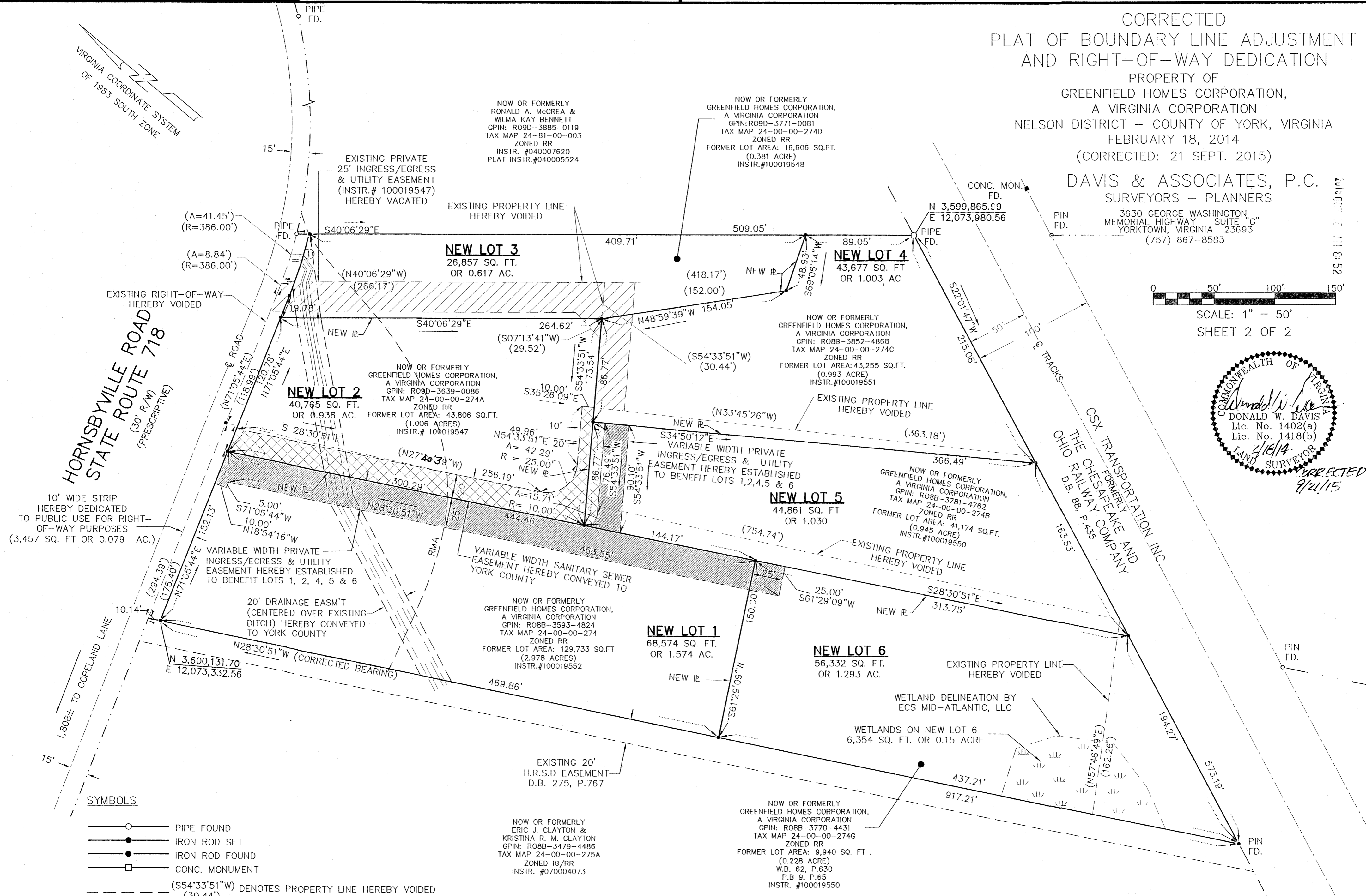
3630 GEORGE WASHINGTON,
 MEMORIAL HIGHWAY - SUITE "G"
 YORKTOWN, VIRGINIA 23693
 (757) 867-8583



SCALE: 1" = 50'
 SHEET 2 OF 2



CORRECTED
 9/21/15



HORNSBYVILLE ROAD
 STATE ROUTE 718
 (30' R/W)
 (PRESCRIPTIVE)

CSX TRANSPORTATION INC.
 THE CHESAPEAKE AND
 OHIO RAILWAY COMPANY
 D.B. 88, P. 435

SYMBOLS

- PIPE FOUND
- IRON ROD SET
- IRON ROD FOUND
- CONC. MONUMENT
- (S54°33'51"W) DENOTES PROPERTY LINE HEREBY VOIDED (30.44')
- [Hatched Box] = VARIABLE WIDTH PRIVATE INGRESS/EGRESS & UTILITY EASEMENT HEREBY ESTABLISHED TO BENEFIT LOTS 1, 2, 4, 5, & 6
- [Diagonal Lines Box] = EXISTING PRIVATE 25' INGRESS/EGRESS & UTILITY EASEMENT (INST. #100019547) HEREBY VACATED
- [Cross-hatched Box] = VARIABLE WIDTH SANITARY SEWER EASEMENT HEREBY DEDICATED TO YORK COUNTY

CURVE TABLE

NO.	DELTA	RADIUS	ARC	TANGENT	CHORD	CH. BEARING
1	07°49'08"	396.00'	54.04'	27.06'	54.00'	N67°11'11"E

APPROVED:
 YORK COUNTY BOARD OF SUPERVISORS

BY: *Al Madalena* DATE: 10/27/15
 PLAT APPROVING AGENT

STATE OF VIRGINIA
 COUNTY OF YORK
 IN THE CLERK'S OFFICE OF THE CIRCUIT FOR
 THE COUNTY OF YORK-POQUOSON, VIRGINIA, THE
~~28th~~ DAY OF October, 2015, THIS PLAT
 WAS PRESENTED AND ADMITTED TO RECORD AS THE
 LAW DIRECTS AS INSTRUMENT NUMBER 156019971

TESTE: *Kristen N. Nelson*
 CLERK
 BY: *Talvin R. ...* 8:52 AM