

N/F
WYNDAM VACATION
RESORTS, INC.
T.M. 05-16-00-001C10
INSTR. #070005309
GPIN #D16C-0416-1520
ZONED: EO

PHASE 1 AREA = 277,615 S.F. / 6.373 AC.
FUTURE PHASE 2 AREA 311,581 S.F. / 7.153 AC.
TOTAL AREA PARCEL 3 589,196 S.F. / 13.526 AC.

BOUNDARY CURVE TABLE						
CURVE #	DELTA	RADIUS	LENGTH	TANGENT	CHORD	CHORD BEARING
B1	94°44'11"	25.00'	41.34'	27.16'	36.79'	N20°58'38"W
B2	28°43'19"	320.00'	160.41'	81.93'	158.74'	N53°59'03"W
B3	90°00'00"	25.00'	39.27'	25.00'	35.36'	N84°37'24"W
B4	172°29'22"	60.00'	180.63'	914.13'	119.74'	S40°04'39"W
B5	72°53'43"	25.00'	31.81'	18.46'	29.70'	S9°43'10"E
B6	52°21'04"	190.00'	173.60'	93.39'	167.63'	S52°54'13"W
B7	64°54'08"	430.00'	487.09'	273.43'	461.46'	S46°37'41"W
B8	12°12'51"	570.00'	121.51'	60.99'	121.28'	S20°17'02"W

PLAT OF SUBDIVISION
THE RESERVE AT WILLIAMSBURG
SINGLE FAMILY TOWNHOMES
PHASE 1

SHEET 2 OF 4

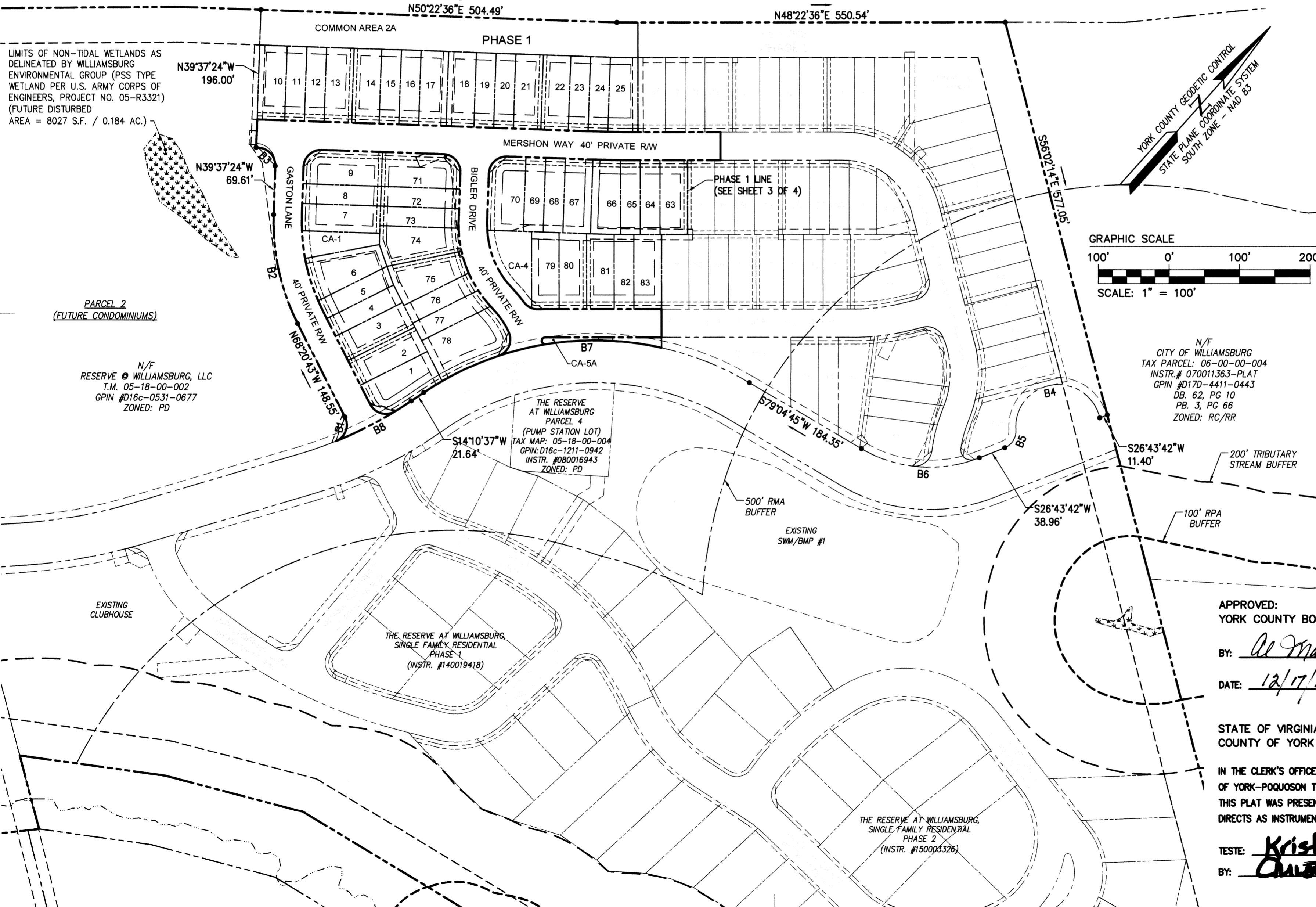
BRUTON DISTRICT COUNTY OF YORK VIRGINIA
Date: 12-05-14 Scale: 1"=100' Proj. No.: 9128-10D Proj. Contacts: TCS/TRS



5248 Old Towne Road, Suite 1
Williamsburg, Virginia 23188
Phone: (757) 253-0040
Fax: (757) 220-8994
www.aesva.com

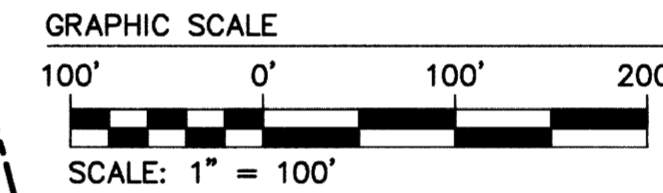
Hampton Roads | Central Virginia | Middle Peninsula

N/F
WYNDAM VACATION
RESORTS, INC.
T.M. 05-16-00-002
INSTR. #070005309
GPIN #D16C-0749-1535
PB. 12, PG 607
ZONED: EO



LEGEND

- PROPERTY LINE
- - - RIGHT-OF-WAY LINE
- - - EASEMENT
- - - R/W MONUMENT SET
- CMF CONCRETE MONUMENT FOUND
- IR IRON ROD
- IRS IRON ROD SET
- IRF IRON ROD FOUND
- RPA RESOURCE PROTECTION AREA
- RMA RESOURCE MANAGEMENT AREA
- R/W RIGHT-OF-WAY
- PP POWER POLE
- N/F NOW / FORMERLY



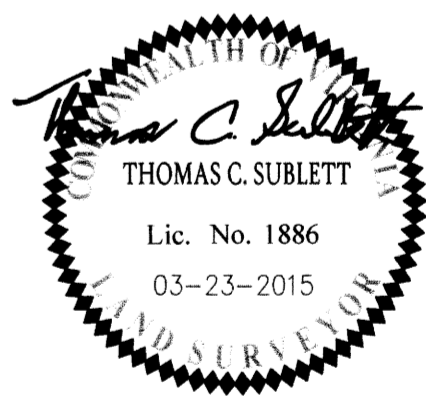
LIMITS OF NON-TIDAL WETLANDS AS
DELINEATED BY WILLIAMSBURG
ENVIRONMENTAL GROUP (PSS TYPE
WETLAND PER U.S. ARMY CORPS OF
ENGINEERS, PROJECT NO. 05-R3321)
(FUTURE DISTURBED
AREA = 8027 S.F. / 0.184 AC.)

PARCEL 2
(FUTURE CONDOMINIUMS)

N/F
RESERVE @ WILLIAMSBURG, LLC
T.M. 05-18-00-002
GPIN #D16C-0531-0677
ZONED: PD

THE RESERVE
AT WILLIAMSBURG
PARCEL 4
(PUMP STATION LOT)
TAX MAP: 05-18-00-004
GPIN: D16C-1211-0942
INSTR. #080016943
ZONED: PD

N/F
CITY OF WILLIAMSBURG
TAX PARCEL: 06-00-00-004
INSTR. # 070011363-PLAT
GPIN #D17D-4411-0443
DB. 62, PG 10
PB. 3, PG 66
ZONED: RC/RR



APPROVED:
YORK COUNTY BOARD OF SUPERVISORS
BY: *Al Mandelam*, PLAT APPROVING AGENT

DATE: 12/17/15

STATE OF VIRGINIA
COUNTY OF YORK

IN THE CLERK'S OFFICE OF THE CIRCUIT COURT FOR THE COUNTY
OF YORK-POQUOSON THE 18th DAY OF Dec, 2015.
THIS PLAT WAS PRESENTED AND ADMITTED TO RECORD AS THE LAW
DIRECTS AS INSTRUMENT NO. 150023312

TESTE: *Kristen N. Nelson*, CLERK
BY: *Christina H. Elliot D.C.*