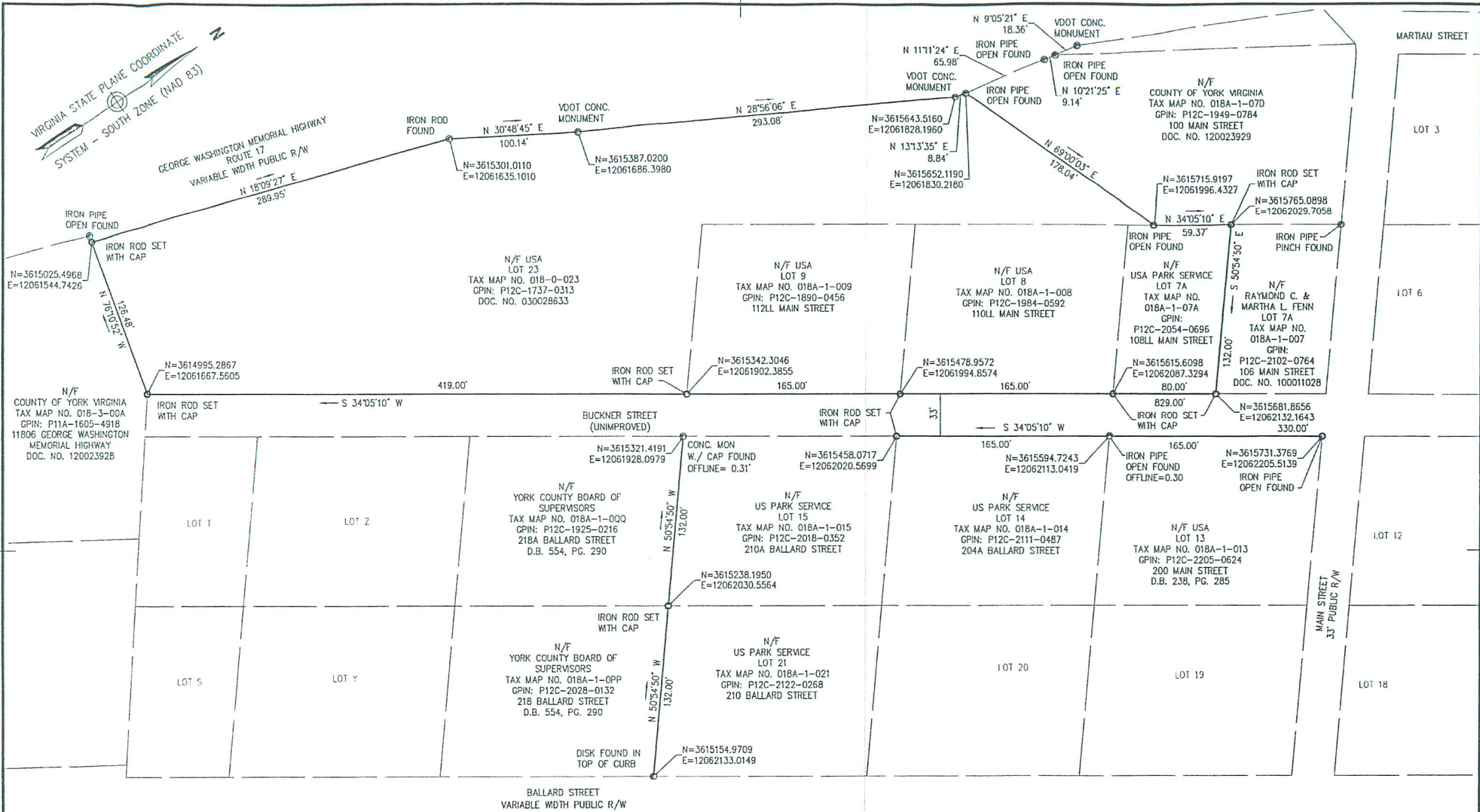


VIRGINIA STATE PLANE COORDINATE SYSTEM - SOUTH ZONE (NAD 83)

GEORGE WASHINGTON MEMORIAL HIGHWAY ROUTE 17 VARIABLE WIDTH PUBLIC R/W N 18°09'27" E 289.95'



180001115
 Filed in the Clerk's Office, Circuit Court, York County - Poquoson, VA
 the 18 day of Jan, 2018
 Test: Kriston N. Nelson, Clerk
 By: *[Signature]* D.C.

- NOTES:
1. THIS SURVEY DOES NOT REPRESENT A SUBDIVISION OR BOUNDARY LINE ADJUSTMENT.
 2. THE PROPERTY LINES SHOWN ARE BASE ON DEEDS, PLATS OF RECORD, AND AN ON THE GROUND SURVEY PERFORMED BY VHB DURING NOVEMBER 2017.
 3. COORDINATE VALUES SHOWN BASED ON YORK COUNTY GEODETIC CONTROL MONUMENT STATION NO. 050 N 3614874.664 E 12061943.247
 4. COORDINATES SHOWN TO PROPERTY CORNER.



SURVEYOR'S CERTIFICATE:

I HEREBY CERTIFY THAT TO THE BEST OF MY KNOWLEDGE AND BELIEF, THIS PLAT COMPLIES WITH THE REQUIREMENTS OF THE COMMONWEALTH OF VIRGINIA BOARD OF ARCHITECTS, PROFESSIONAL ENGINEERS, LAND SURVEYORS, CERTIFIED INTERIOR DESIGNERS AND LANDSCAPE ARCHITECTS.



PARTIAL BOUNDARY LINE RETRACEMENT
 U.S. PARK SERVICE
 COLONIAL NATIONAL HISTORICAL PARK
 PARCELS "7A", "8", "9", "13", "14",
 "15", "21" AND "23"
 YORK COUNTY, VIRGINIA
 SCALE: 1"=50' DATE: JANUARY 18, 2018



351 McLaws Circle, Suite 3
 Williamsburg, Virginia 23185
 757 220 0500 • FAX 757 903 2794