

HUNTFIELD

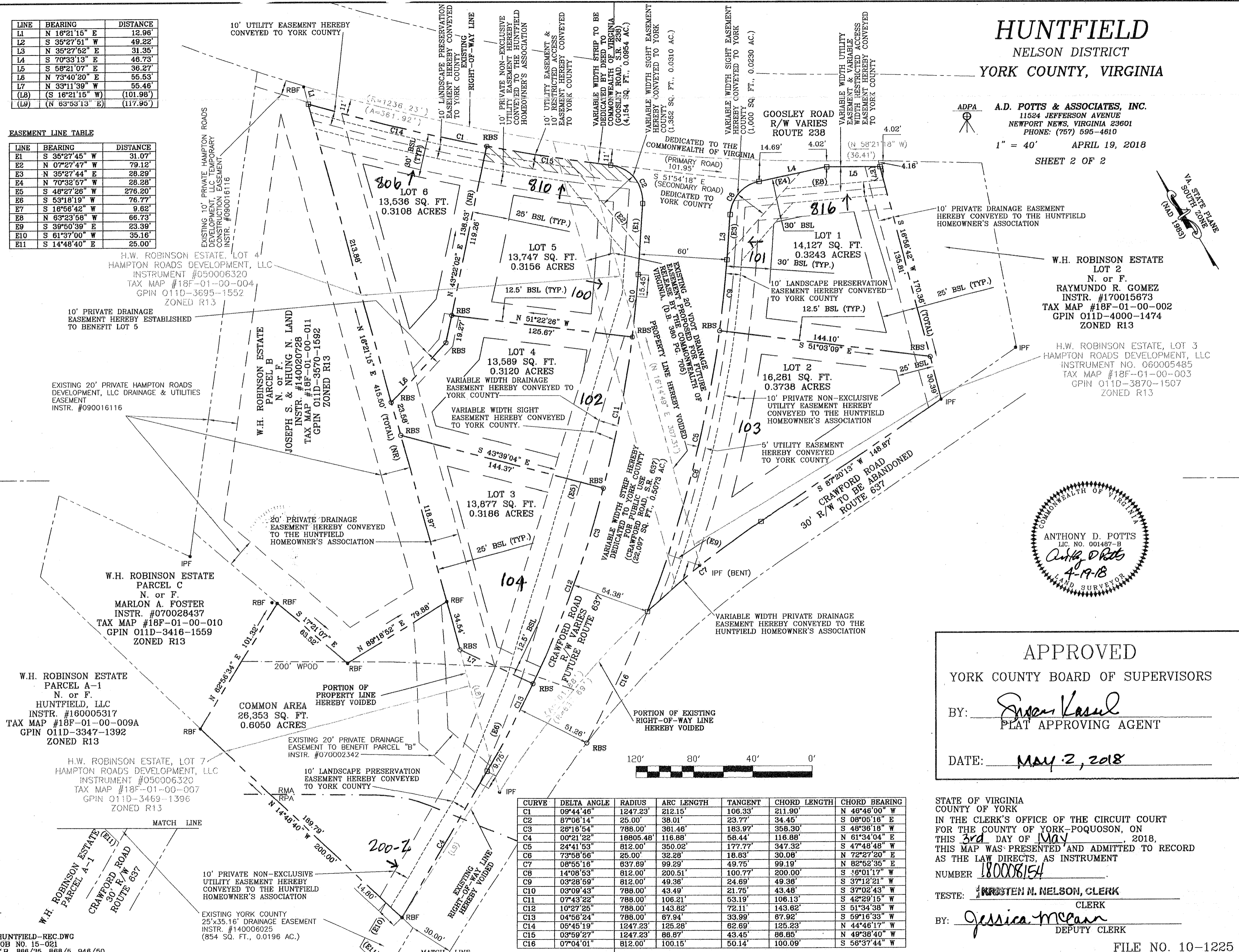
NELSON DISTRICT
YORK COUNTY, VIRGINIA

ADPA A.D. POTTS & ASSOCIATES, INC.
11524 JEFFERSON AVENUE
NEWPORT NEWS, VIRGINIA 23601
PHONE: (757) 595-4610
1" = 40' APRIL 19, 2018
SHEET 2 OF 2

LINE	BEARING	DISTANCE
L1	N 16°21'15" E	12.96'
L2	S 35°27'51" W	49.22'
L3	N 35°27'52" E	31.35'
L4	S 70°33'13" E	46.73'
L5	S 58°21'07" E	36.27'
L6	N 73°40'20" E	55.53'
L7	N 33°11'39" W	55.46'
(L8)	(S 16°21'15" W)	(101.98')
(L9)	(N 63°53'13" E)	(117.95')

EASEMENT LINE TABLE

LINE	BEARING	DISTANCE
E1	S 35°27'45" W	31.07'
E2	N 07°27'47" W	79.12'
E3	N 35°27'44" E	28.29'
E4	N 70°32'57" W	28.28'
E5	S 48°27'26" W	276.20'
E6	S 53°18'19" W	76.77'
E7	S 18°56'42" W	9.62'
E8	N 63°23'58" W	66.73'
E9	S 39°50'39" E	23.39'
E10	S 61°37'00" E	35.16'
E11	S 14°48'40" E	25.00'



APPROVED
YORK COUNTY BOARD OF SUPERVISORS
BY: Susan Kasul
PLAT APPROVING AGENT
DATE: MAY 2, 2018

CURVE	DELTA ANGLE	RADIUS	ARC LENGTH	TANGENT	CHORD LENGTH	CHORD BEARING
C1	09°44'46"	1247.23'	212.15'	106.33'	211.90'	N 46°46'00" W
C2	87°06'14"	25.00'	38.01'	23.77'	34.45'	S 08°05'18" E
C3	26°16'54"	788.00'	361.46'	183.97'	358.30'	S 48°38'18" W
C4	00°21'22"	18805.48'	116.88'	58.44'	116.88'	N 61°34'04" E
C5	24°41'53"	812.00'	350.02'	177.77'	347.32'	S 47°48'48" W
C6	73°58'56"	25.00'	32.28'	18.83'	30.06'	N 72°27'20" E
C7	08°55'16"	837.89'	99.29'	49.75'	99.19'	N 82°52'35" E
C8	14°08'53"	812.00'	200.51'	100.77'	200.00'	S 36°01'17" W
C9	03°28'59"	812.00'	49.36'	24.69'	49.36'	S 37°12'21" W
C10	03°09'43"	788.00'	43.49'	21.75'	43.48'	S 37°02'43" W
C11	07°43'22"	788.00'	106.21'	53.19'	106.13'	S 42°29'15" W
C12	10°27'25"	788.00'	143.82'	72.11'	143.62'	S 51°34'38" W
C13	04°56'24"	788.00'	87.94'	33.99'	87.92'	S 59°16'33" W
C14	05°45'19"	1247.23'	125.28'	62.69'	125.23'	N 44°46'17" W
C15	03°59'27"	1247.23'	88.87'	43.45'	88.85'	N 49°38'40" W
C16	07°04'01"	812.00'	100.15'	50.14'	100.09'	S 58°37'44" W