

PHASE TWO DETAIL



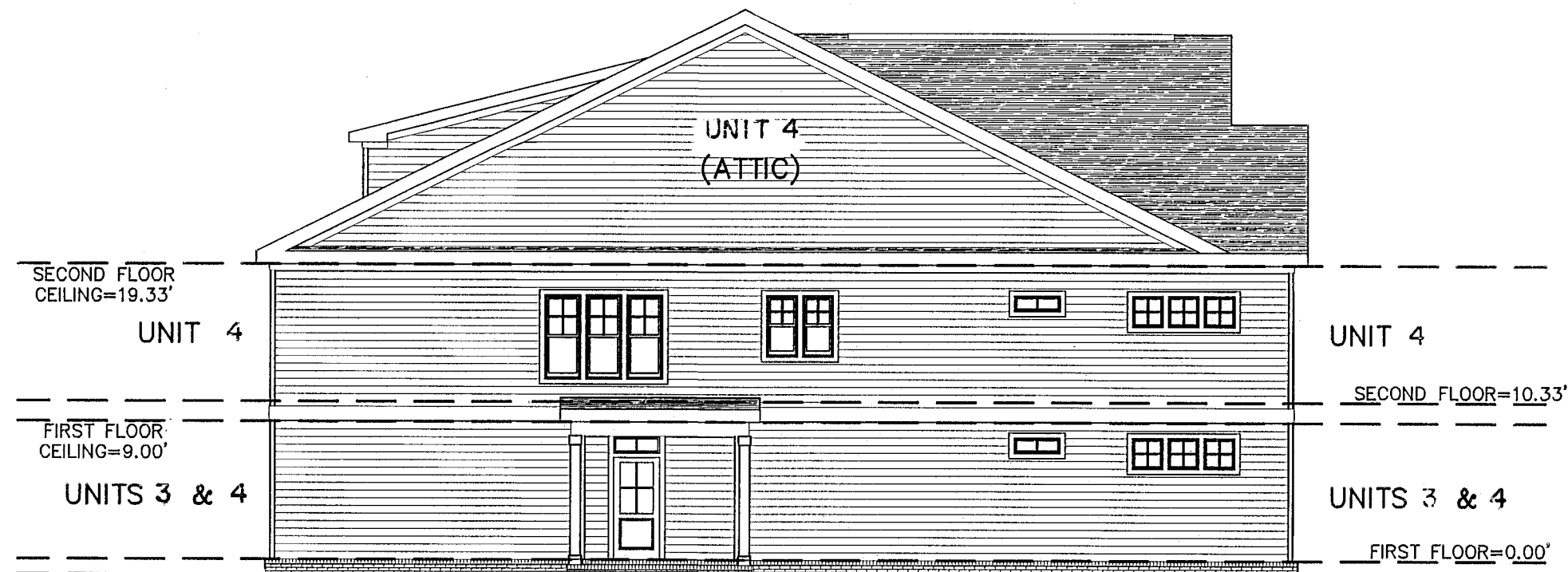
FRONT ELEVATION
(PUBLIC STREET SIDE)



REAR ELEVATION
(PRIVATE LANE SIDE)



RIGHT SIDE ELEVATION



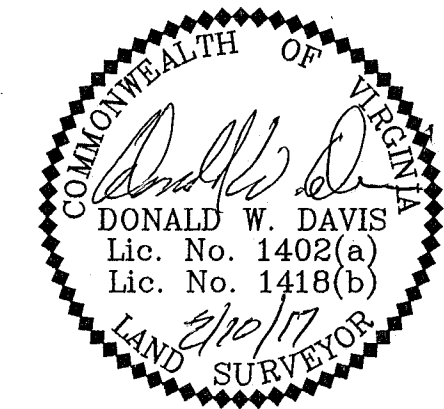
LEFT SIDE ELEVATION

180011970

CONDOMINIUM PLAT
OF
PHASE TWO
MAINSTAY AT
COMMONWEALTH GREEN
SECTION ONE

BETHEL MAGISTERIAL DISTRICT
COUNTY OF YORK, VIRGINIA
SCALE: 1"=10' DATE: FEBRUARY 10, 2017
SHEET 7 OF 7

DAVIS & ASSOCIATES, P.C.
LAND SURVEYORS AND PLANNERS
3630 GEORGE WASHINGTON MEMORIAL HIGHWAY
YORKTOWN, VIRGINIA 23693
(757)867-8583



A P P R O V E D
YORK COUNTY BOARD OF SUPERVISORS

BY: *Susan Kasul*
PLAT APPROVING AGENT

DATE: JULY 31 2018

STATE OF VIRGINIA
COUNTY OF YORK
IN THE CLERK'S OFFICE OF THE YORK -
POQUOSON CIRCUIT COURT THIS 18
DAY OF July 2018, THIS MAP WAS
PRESENTED AND ADMITTED TO RECORD AS
THE LAW DIRECTS AS INSTRUMENT # 18001970

TESTE: *Kristen N. Nelson*
CLERK

BY: *Cathy J. De*