

ADJACENT PROPERTY OWNERS INFORMATION

LOT B
N/F JAMIE S. AND MELANIE O. HALL
CPIN D15B-4522-4832
T.M. 06-00-00-022
INSTR. #160021232
D.B. 58A, PG. 560
ZONED: R20

LOT C
N/F WILLIAM C. & JOYCE S. WILKINS
CPIN D16D-4661-0642
T.M. 06-00-00-019
D.B. 133, PG. 590
ZONED: R20

LOT D
CPIN D16D-4872-1229
N/F VIRGINIA ELEC. & POWER CO.
T.M. 06-00-00-018
D.B. 56, PG. 65
P. B. 1, PG. 547
ZONED: R20

LOT E
N/F GORE AND ASSOC. MGT CO.
CPIN D15D-4835-1586
T.M. 06-00-00-017
INSTR. #170006271
ZONED: R20

LOT F
N/F NANCY O. WILLIAMS WADE & FAITH F. WILLIAMS
CPIN D16D-4970-1724
T.M. 06-00-00-016
D.B. 51, PG. 93
D.B. 80, PG. 462
ZONED: R20

LOT G
N/F CLARENCE FLETCHER BARTLETT ESTATE
CPIN D16D-4764-1747
T.M. 06-00-00-013
W.B. 59, PG. 747
ZONED: R20

LOT H
N/F C & C REAL ESTATE PROP. MAN. LLC
CPIN D16D-4742-1811
T.M. 06-00-00-012
INSTR# 160008092
ZONED: R20

LOT I
N/F C & C REAL ESTATE PROP. MAN. LLC
CPIN D16D-4860-1835
T.M. 06-00-00-009
INSTR# 160008092
ZONED: R20

LOT J
N/F G SQUARE, INC
CPIN D16D-4909-1840
T.M. 06-00-00-014
D.B. 067, PG. 426
ZONED: R20

LOT K
N/F MARVIN JONES
CPIN D16D-4951-1860
T.M. 06-00-00-015
D.B. 361, PG. 189
ZONED: R20

LOT L
N/F G SQUARE, INC
CPIN D16D-4996-1879
T.M. 06-00-00-016A
D.B. 067, PG. 428
ZONED: R20

LOT M
N/F JOSHUA W. & AMANDA R. RUNNING
CPIN D16D-4987-2017
T.M. 06-00-00-011
D.B. INSTR. #160004723
ZONED: R20

LOT N
N/F RONALD C. WALLACE, TR AND RUBY CHARMAINE GEORGE, TR
CPIN E16C-0017-2137
T.M. 06-01-00-001
INSTR. #19005701
D.B. 167, PG. 735 (PLAT)
ZONED: R20

LOT O
N/F ELIZABETH ROBINSON ESTATE
CPIN E16C-0162-2282
T.M. 06-01-00-002B
INSTR. #190000497
D.B. 167, PG. 731 (PLAT)
ZONED: R20

LOT P
N/F MARY A COOK EST.
CPIN D16D-4990-2419
T.M. 06-00-00-008
D.B. 1069, PG. 881
D.B. 26, PG. 33
ZONED: R20

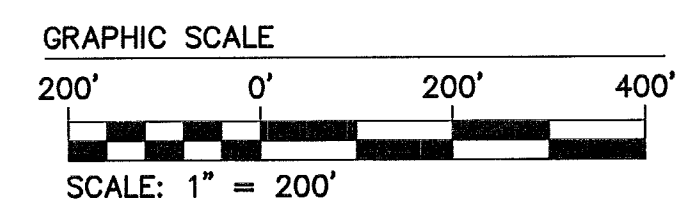
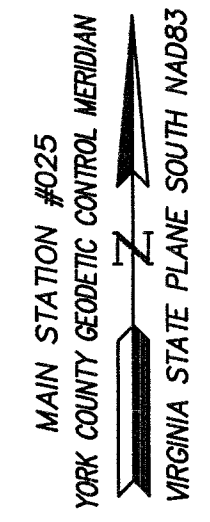
LOT Q
N/F OAK GROVE BAPTIST CHURCH
CPIN E16A-0413-2812
T.M. 06-00-00-006
D.B. 63, PG. 84
D.B. 262, PG. 33
ZONED: R20

PLAT OF BOUNDARY LINE ADJUSTMENT
BEING VARIOUS PARCELS OF LAND
OWNED BY
THE COLONIAL WILLIAMSBURG FOUNDATION,
A VIRGINIA NON-STOCK CORPORATION

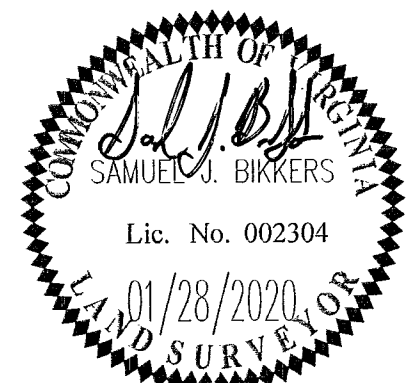
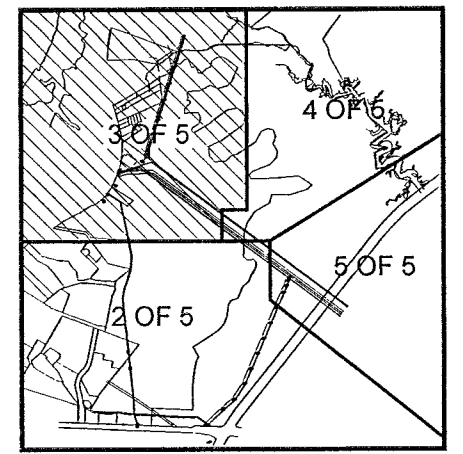
BRUTON DISTRICT YORK COUNTY VIRGINIA
Date: 09/26/19 Scale: 1"=200 Proj. No.: W9654-05 Proj. Contacts: SJB/JFS

AES
CONSULTING ENGINEERS
5248 Old Towne Road, Suite 1
Williamsburg, Virginia 23188
Phone: (757) 253-0040
Fax: (757) 220-8994
www.aesva.com

SHEET 3 OF 5

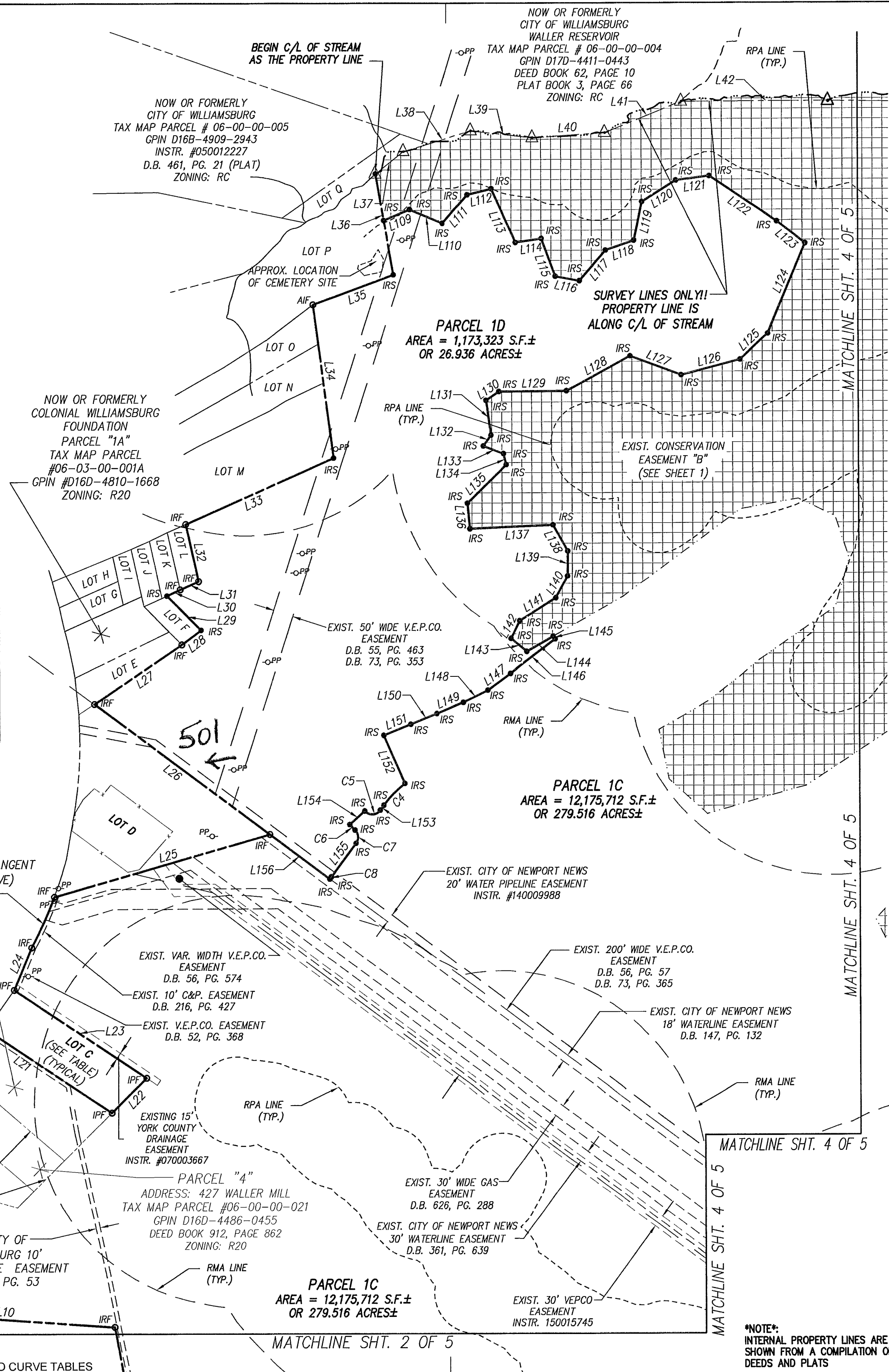


- LEGEND**
- D.B. = DEED BOOK
 - P.B. = PLAT BOOK
 - RPA = RESOURCE PROTECTION AREA
 - RMA = RESOURCE MANAGEMENT AREA
 - PP = POWER POLE
 - WM = WATER METER
 - WV = WATER VALVE
 - IRS = IRON ROD SET
 - CMF = CONC. MON. FOUND
 - IRF = IRON ROD FOUND
 - IPF = IRON PIPE FOUND
 - AIF = ANGLE IRON FOUND



APPROVED:
BY YORK COUNTY BOARD OF SUPERVISORS
BY: Jason Kessler PLAT APPROVING AGENT
DATE: JANUARY 31, 2020

STATE OF VIRGINIA
COUNTY OF YORK
IN THE CLERK'S OFFICE OF THE CIRCUIT COURT FOR THE COUNTY OF YORK-POQUOSON, THE 31st DAY OF January, 2020
THIS MAP WAS PRESENTED AND ADMITTED TO RECORD AS THE LAW DIRECTS, AS INSTRUMENT NO. 200001960
TESTE: KRISTEN N. NELSON, CLERK
BY: Megan Bowend CLERK



NOTE: SEE SHEET 5 FOR LINE AND CURVE TABLES

*NOTE:
INTERNAL PROPERTY LINES ARE
SHOWN FROM A COMPILATION OF
DEEDS AND PLATS

20 JAN 31 2020