

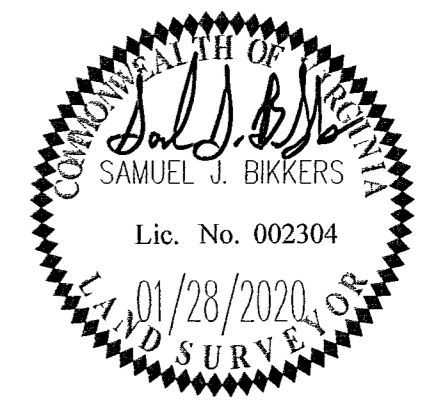
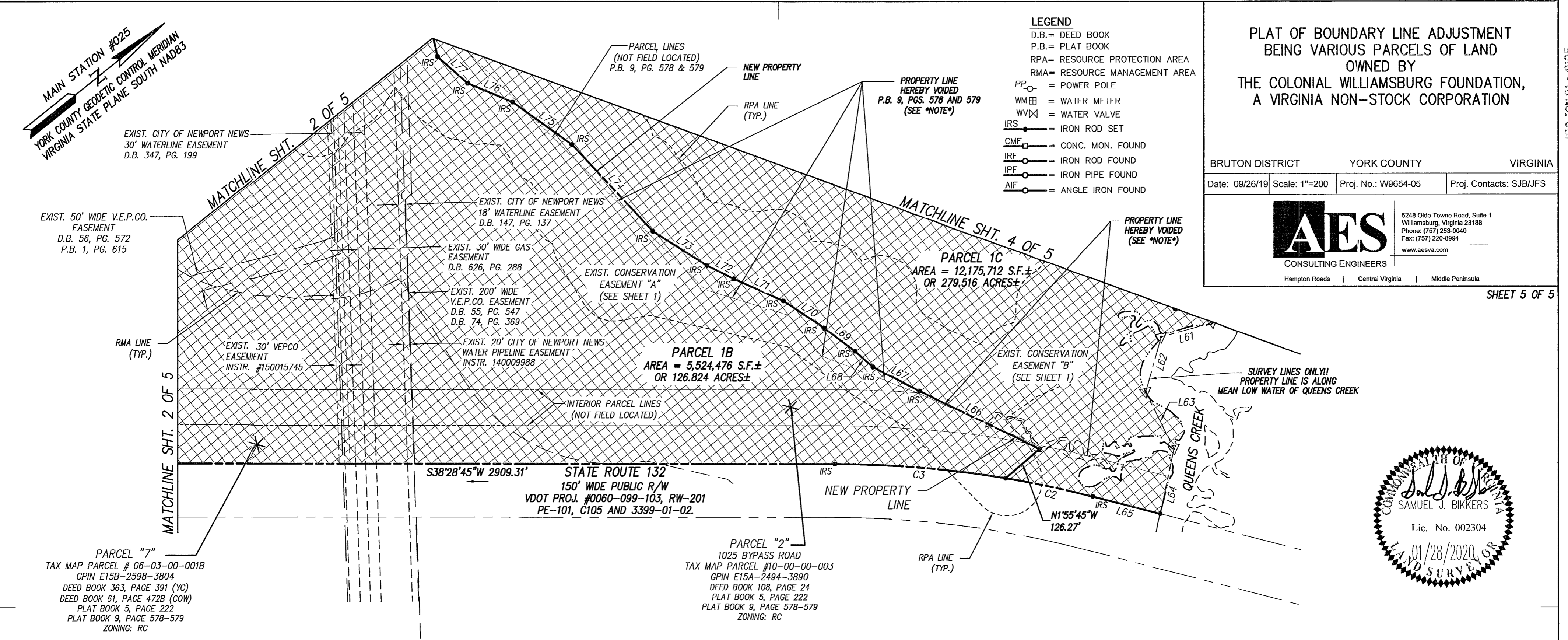
- LEGEND**
- D.B. = DEED BOOK
 - P.B. = PLAT BOOK
 - RPA = RESOURCE PROTECTION AREA
 - RMA = RESOURCE MANAGEMENT AREA
 - PP = POWER POLE
 - WM = WATER METER
 - WV = WATER VALVE
 - IRS = IRON ROD SET
 - CMF = CONC. MON. FOUND
 - IRF = IRON ROD FOUND
 - IPF = IRON PIPE FOUND
 - AIF = ANGLE IRON FOUND

**PLAT OF BOUNDARY LINE ADJUSTMENT
BEING VARIOUS PARCELS OF LAND
OWNED BY
THE COLONIAL WILLIAMSBURG FOUNDATION,
A VIRGINIA NON-STOCK CORPORATION**

BRUTON DISTRICT YORK COUNTY VIRGINIA
Date: 09/26/19 Scale: 1"=200 Proj. No.: W9654-05 Proj. Contacts: SJB/JFS

AES
CONSULTING ENGINEERS
5248 Olde Towne Road, Suite 1
Williamsburg, Virginia 23188
Phone: (757) 253-0040
Fax: (757) 229-8994
www.aesva.com

SHEET 5 OF 5



LINE	BEARING	LENGTH
L1	N69°03'46"W	562.33'
L2	N11°01'47"E	84.03'
L3	N11°24'58"E	478.24'
L4	N24°52'06"E	100.72'
L5	N4°35'30"E	53.93'
L6	N4°34'26"E	83.80'
L7	N51°39'45"E	302.91'
L8	N2°47'32"E	187.64'
L9	N10°34'36"W	262.04'
L10	N86°00'28"W	575.47'
L11	N36°16'50"W	113.48'
L12	N79°05'12"W	478.72'
L13	N55°42'26"E	162.28'
L14	N62°16'29"E	220.18'
L15	N67°34'47"E	45.01'
L16	N58°12'43"E	212.78'
L17	N74°38'53"E	30.91'
L18	N66°31'48"E	53.48'
L19	N49°46'00"E	109.43'
L20	N41°15'26"E	121.26'
L21	S56°29'34"E	374.05'
L22	N45°07'56"E	121.99'
L23	N56°26'24"W	394.75'
L24	N22°44'03"E	113.79'
L25	N73°59'50"E	558.76'

LINE	BEARING	LENGTH
L26	N53°25'54"W	541.98'
L27	N56°00'26"E	263.19'
L28	N53°27'15"E	59.90'
L29	N44°54'06"W	119.85'
L30	N64°49'50"E	36.40'
L31	N66°07'34"E	50.16'
L32	N12°34'51"W	144.97'
L33	N66°07'25"E	403.23'
L34	N7°29'45"W	383.04'
L35	N69°45'23"E	213.56'
L36	N9°58'28"W	253.52'
L37	N51°52'21"E	89.78'
L38	N73°14'06"E	175.75'
L39	S83°23'46"E	155.06'
L40	N86°00'39"E	180.32'
L41	N68°06'39"E	205.79'
L42	N89°52'31"E	364.76'
L43	S89°19'44"E	754.82'
L44	S47°00'31"E	462.21'
L45	S20°37'44"W	250.44'
L46	S7°18'13"E	155.58'
L47	N79°34'02"E	204.11'
L48	S36°52'02"E	165.48'
L49	N5°16'43"W	172.58'
L50	S26°46'57"E	256.30'

LINE	BEARING	LENGTH
L51	N71°06'49"E	310.59'
L52	S12°22'11"E	213.36'
L53	N46°51'56"E	198.25'
L54	S12°34'38"E	298.84'
L55	S49°46'44"E	380.02'
L56	S55°03'50"W	325.48'
L57	S81°29'09"E	266.71'
L58	S64°55'02"W	202.55'
L59	S4°52'43"E	261.22'
L60	N68°37'18"E	347.60'
L61	S22°37'48"W	151.04'
L62	S35°37'22"E	159.88'
L63	S78°06'17"E	178.47'
L64	S39°13'31"E	185.83'
L65	S52°48'45"W	196.13'
L66	S64°03'02"W	375.64'
L67	S65°41'34"W	147.29'
L68	S79°41'04"W	67.24'
L69	S74°57'01"W	109.30'
L70	S72°03'18"W	137.23'
L71	S62°16'09"W	154.01'
L72	S64°41'42"W	84.54'
L73	S70°40'17"W	179.83'
L74	S85°15'45"W	333.94'
L75	S73°50'33"W	204.83'

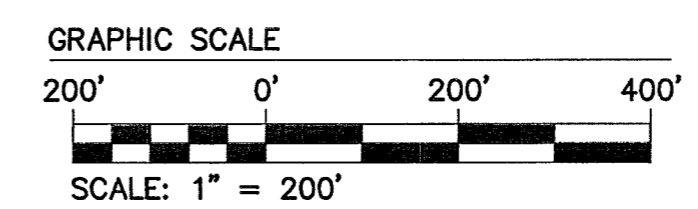
LINE	BEARING	LENGTH
L76	S61°11'52"W	137.82'
L77	S79°46'01"W	112.69'
L78	N63°45'51"W	129.24'
L79	N85°55'02"W	75.49'
L80	S81°07'20"W	53.98'
L81	S73°51'54"W	36.09'
L82	S35°24'51"W	108.32'
L83	S70°57'55"W	119.24'
L84	S67°34'47"W	90.88'
L85	S64°59'03"W	121.74'
L86	S61°23'38"W	36.04'
L87	S17°49'02"E	295.01'
L88	S18°43'45"E	142.43'
L89	S10°55'09"E	171.69'
L90	S12°32'23"E	72.56'
L91	S8°32'18"W	48.72'
L92	S15°17'03"W	128.07'
L93	S42°56'09"W	233.63'
L94	S21°49'10"W	51.90'
L95	S46°46'21"W	185.48'
L96	S57°22'17"W	484.18'
L97	N86°59'08"W	845.70'
L98	S35°34'11"W	296.67'
L99	S65°03'02"W	42.45'
L100	N87°34'13"W	415.00'

LINE	BEARING	LENGTH
L101	S60°33'31"W	56.52'
L102	N2°16'44"E	189.92'
L103	S76°23'37"W	24.28'
L104	N86°45'30"W	398.44'
L105	N30°33'00"E	335.16'
L106	N38°43'41"E	343.49'
L107	N39°34'16"E	199.13'
L108	N38°28'24"E	406.63'
L109	N67°07'04"E	70.21'
L110	S67°04'47"E	88.59'
L111	N41°36'01"E	94.66'
L112	N76°21'57"E	61.60'
L113	S24°09'35"E	145.94'
L114	N81°31'56"E	65.89'
L115	S20°19'50"E	99.78'
L116	S79°27'54"E	60.65'
L117	N40°47'07"E	99.77'
L118	N71°04'05"E	74.76'
L119	N11°53'57"E	98.04'
L120	N58°26'28"E	99.79'
L121	N82°28'13"E	83.36'
L122	S56°24'17"E	201.97'
L123	S51°32'20"E	89.16'
L124	S22°46'12"W	241.25'
L125	S47°03'24"W	94.37'

LINE	BEARING	LENGTH
L126	S75°21'21"W	151.38'
L127	N69°32'39"W	136.10'
L128	S61°21'06"W	180.20'
L129	S89°29'50"W	169.12'
L130	S56°01'10"W	38.81'
L131	S7°53'58"E	87.03'
L132	S35°55'24"W	32.70'
L133	S69°10'29"E	53.95'
L134	S13°26'13"E	28.37'
L135	S45°36'06"W	136.05'
L136	S5°50'14"E	63.67'
L137	N87°26'43"E	207.85'
L138	S29°13'27"E	74.48'
L139	S0°46'18"W	62.07'
L140	S28°11'40"W	62.30'
L141	S57°56'20"W	106.61'
L142	S26°48'02"W	49.09'
L143	S50°59'42"E	51.02'
L144	N60°29'47"E	75.77'
L145	S36°48'42"E	8.10'
L146	S53°11'18"W	140.00'
L147	S54°07'40"W	70.09'
L148	S63°16'26"W	68.03'
L149	S67°52'15"W	72.25'
L150	S67°52'15"W	70.00'

LINE	BEARING	LENGTH
L151	S67°52'15"W	73.30'
L152	S23°41'23"E	130.07'
L153	S36°35'12"W	15.27'
L154	S48°07'25"W	50.00'
L155	S36°35'12"W	103.28'
L156	N53°25'54"W	185.65'

CURVE #	DELTA	RADIUS	LENGTH	TANGENT	CHORD	CHORD BEARING
C1	7°21'09"	1071.67'	137.52'	68.85'	137.43'	N24°36'00"E
C2	4°53'58"	2939.70'	251.37'	125.76'	251.30'	S50°21'46"W
C3	9°26'02"	2939.70'	484.03'	242.56'	483.48'	S43°11'46"W
C4	15°45'58"	275.00'	75.67'	38.08'	75.43'	S44°28'11"W
C5	10°32'13"	25.00'	44.30'	30.62'	38.73'	N87°21'18"E
C6	3°19'25"	325.00'	18.85'	9.43'	18.85'	S43°32'18"E
C7	8°14'12"	25.00'	35.69'	21.65'	32.73'	N4°18'24"W
C8	1°24'42"	275.00'	6.78'	3.39'	6.78'	S35°52'51"W



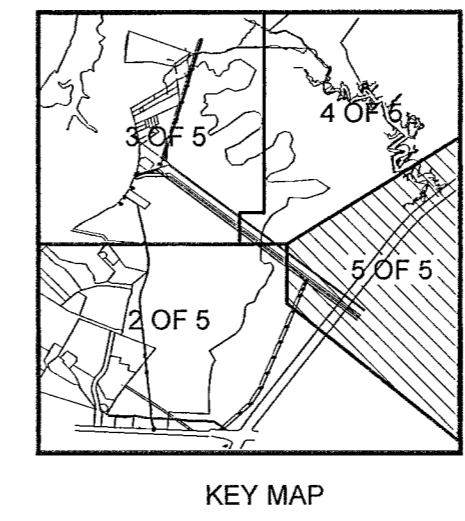
NOTE:
INTERNAL PROPERTY LINES ARE
SHOWN FROM A COMPILATION OF
DEEDS AND PLATS

APPROVED:
BY: *Sharon Kassel* PLAT APPROVING AGENT

DATE: JANUARY 31, 2020
STATE OF VIRGINIA
COUNTY OF YORK
IN THE CLERK'S OFFICE OF THE CIRCUIT COURT FOR THE COUNTY OF
YORK-POQUOSON, THE 31st DAY OF January, 2020

THIS MAP WAS PRESENTED AND ADMITTED TO RECORD AS THE LAW
DIRECTS, AS INSTRUMENT NO. 200001960
KRISTEN N. NELSON, CLERK

TESTE: _____ CLERK
BY: *Megan Bower De*



KEY MAP