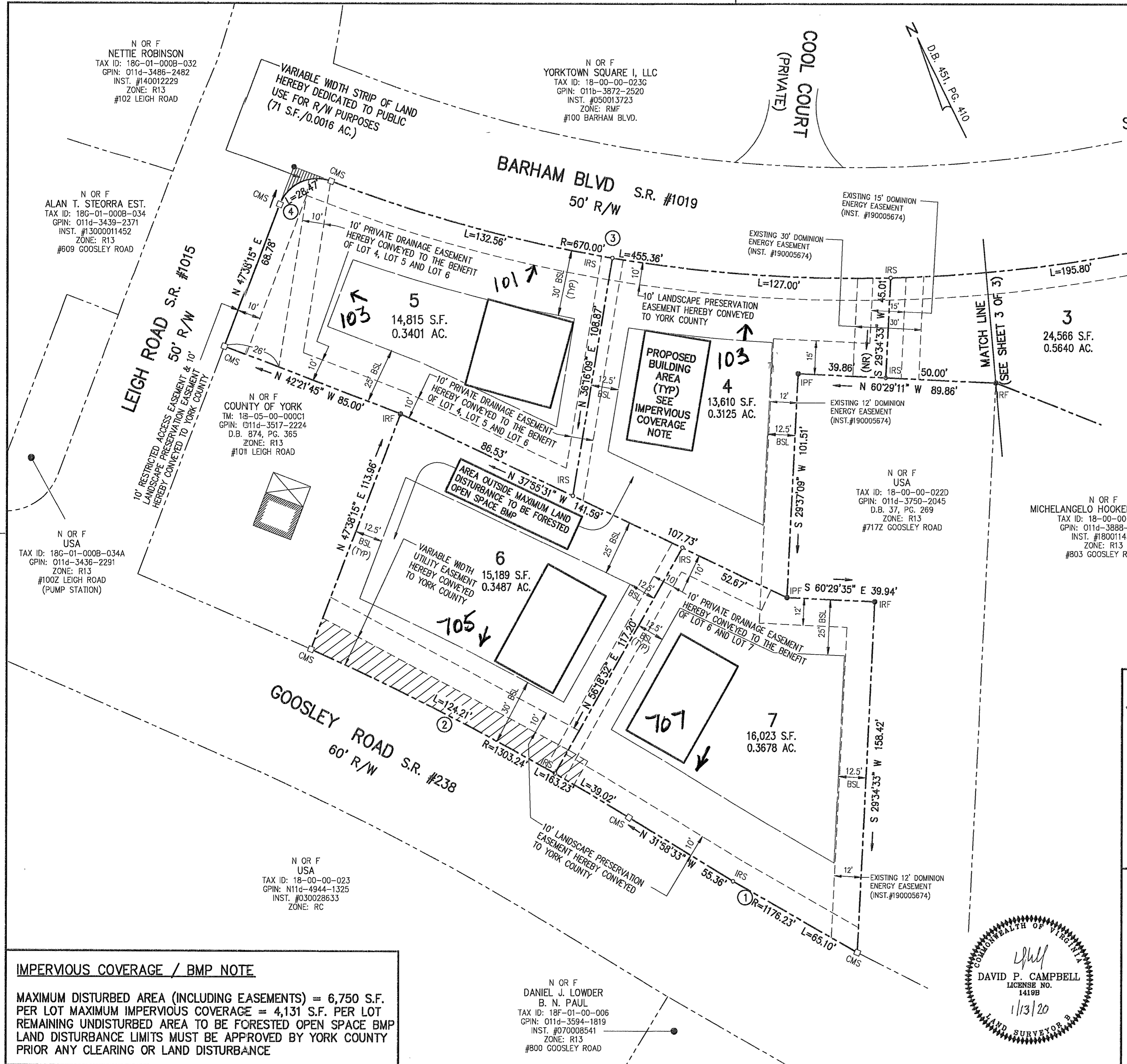


SUBDIVISION OF
BARHAM TRACE
 NELSON DISTRICT
 COUNTY OF YORK, VIRGINIA
 SCALE: 1"=30' DATE: DECEMBER 15, 2014

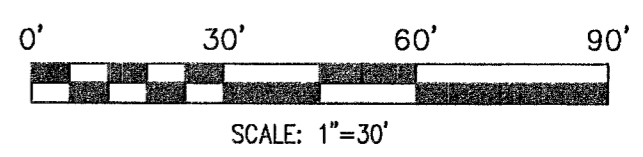
CAMPBELL LAND SURVEYING, INC.
 P.O. BOX 855
 YORKTOWN, VIRGINIA 23692
 (757) 890-0837

SHEET 2 OF 3



LEGEND

	IRON PIPE FOUND
	IRON ROD SET
	CONCRETE MONUMENT FOUND
	CONCRETE MONUMENT SET
	BUILDING SETBACK LINE
	EASEMENT LINE
	UTILITY EASEMENT HEREBY CONVEYED TO YORK COUNTY
	RIGHT OF WAY DEDICATION



IMPERVIOUS COVERAGE / BMP NOTE

MAXIMUM DISTURBED AREA (INCLUDING EASEMENTS) = 6,750 S.F.
 PER LOT MAXIMUM IMPERVIOUS COVERAGE = 4,131 S.F. PER LOT
 REMAINING UNDISTURBED AREA TO BE FORESTED OPEN SPACE BMP
 LAND DISTURBANCE LIMITS MUST BE APPROVED BY YORK COUNTY
 PRIOR ANY CLEARING OR LAND DISTURBANCE

APPROVED
 YORK COUNTY BOARD OF SUPERVISORS

BY: *Dean Kassel*
 PLAT APPROVING AGENT

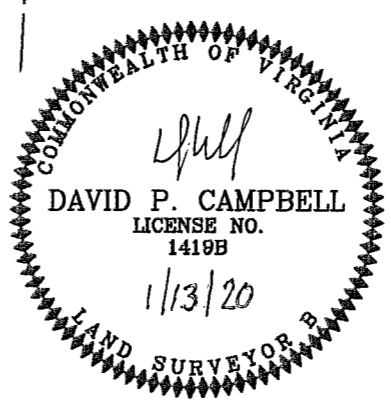
DATE: *FEBRUARY 18, 2020*

STATE OF VIRGINIA
 COUNTY OF YORK

IN THE CLERK'S OFFICE OF THE CIRCUIT COURT FOR THE COUNTY OF YORK-POQUOSON, THIS *20th* DAY OF *February*, 20*20*, THIS MAP WAS PRESENTED AND ADMITTED TO RECORD AS THE LAW DIRECTS, AS INSTRUMENT NUMBER *200003163*

TESTE: **KRISTEN N. NELSON, CLERK**

BY: *Megan Louvenc*
 CLERK



N OR F
 DANIEL J. LOWDER
 B. N. PAUL
 TAX ID: 18F-01-00-006
 GPIN: 011d-3594-1819
 INST. #070008541
 ZONE: R13
 #800 GOOSLEY ROAD