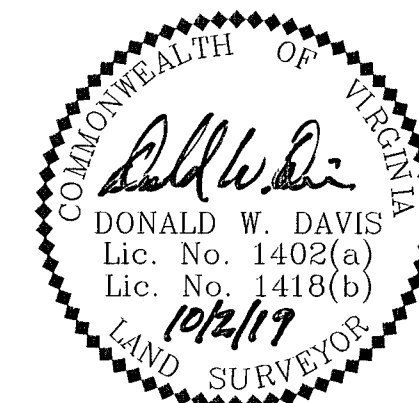
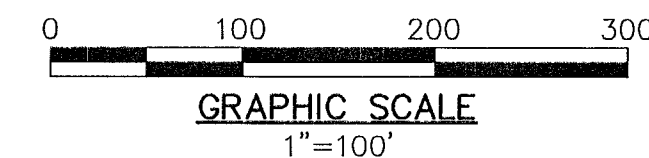


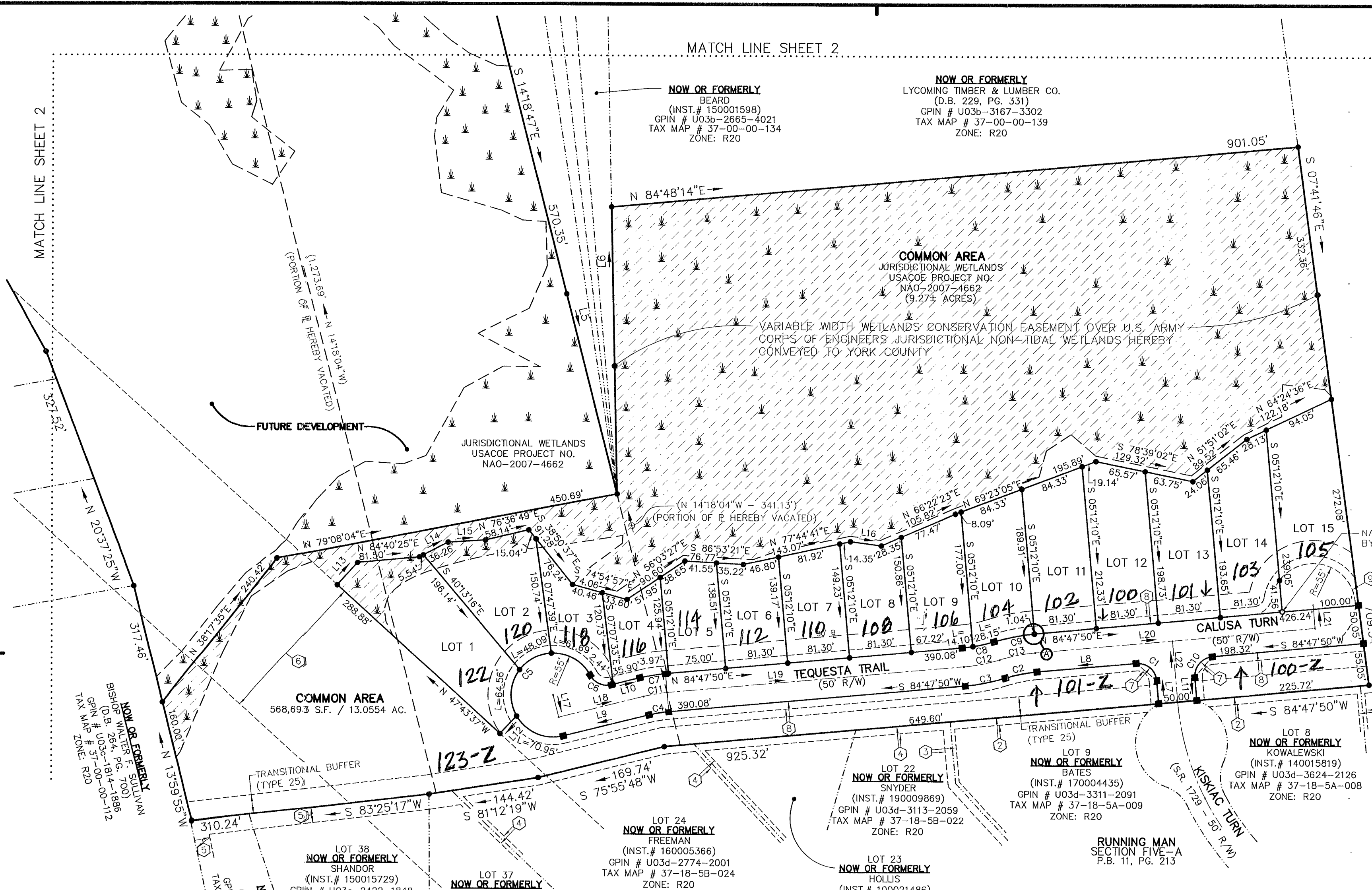
SUBDIVISION PLAT OF TEQUESTA VILLAGE

BETHEL MAGISTERIAL DISTRICT COUNTY OF YORK, VIRGINIA SCALE: 1" = 100' DATE: OCTOBER 2, 2019 SHEET 3 OF 4 DAVIS & ASSOCIATES, P.C. LAND SURVEYORS AND PLANNERS 3630 GEORGE WASHINGTON MEMORIAL HIGHWAY YORKTOWN, VIRGINIA 23693 (757)867-8583

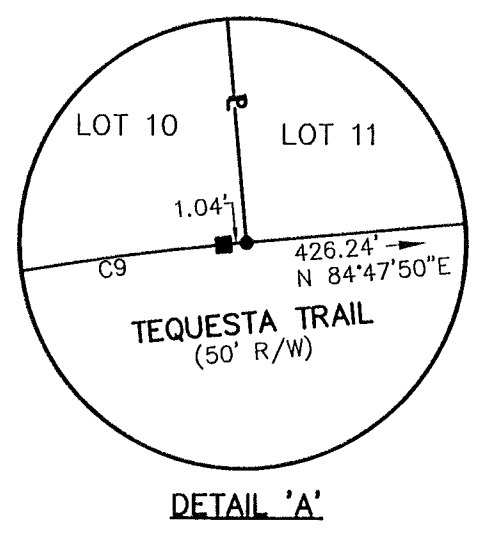


NOW OR FORMERLY SMITH INVESTMENT PROP. LLC GPIN # U03b-4069-3582 TAX MAP # 37-00-00-138 ZONE: R20

NOTE: THIS RIGHT-OF-WAY IS PLATTED WITH THE INTENT OF BEING EXTENDED AND CONTINUED IN ORDER TO PROVIDE INGRESS / EGRESS TO AND FROM FUTURE SUBDIVISIONS OR ADJACENT PROPERTIES.



LOT TABLE with columns for LOT # and AREA. Lists lots 1 through 15 with their respective square footages and acreages.



- SYMBOLS - Legend defining symbols for iron pipe/rod found, concrete monuments, property lines, easements, and curve designations.

APPROVED YORK COUNTY BOARD OF SUPERVISORS. Signature of Susan Kasul, Plat Approving Agent, dated MAY 21, 2020.

STATE OF VIRGINIA COUNTY OF YORK IN THE CLERK'S OFFICE OF THE YORK - POQUOSON CIRCUIT COURT THIS 15th DAY OF June 20 2020 THIS MAP WAS PRESENTED AND ADMITTED TO RECORD AS THE LAW DIRECTS AS INSTRUMENT # 200008704. TESTE: [Signature] CLERK