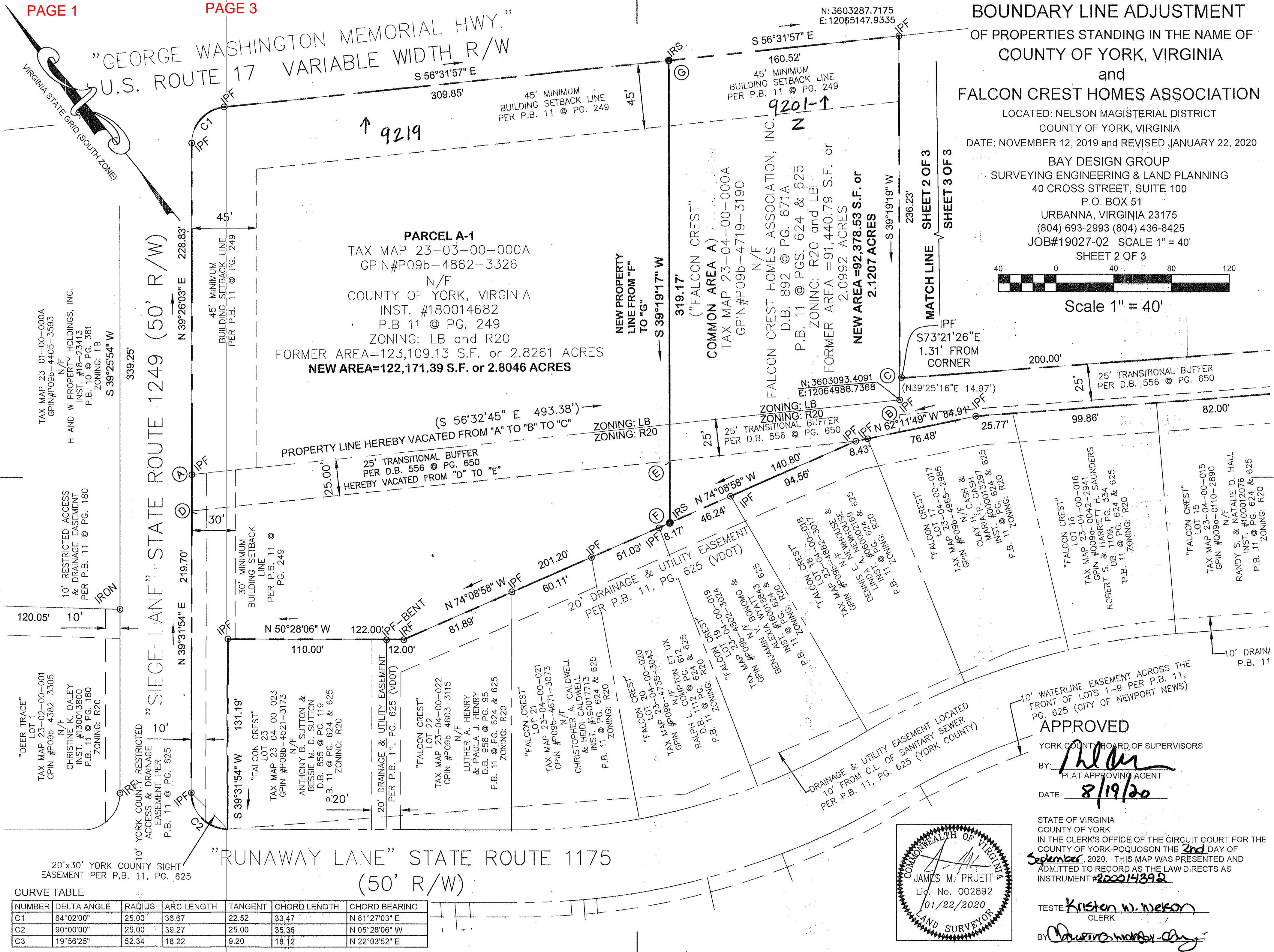


BOUNDARY LINE ADJUSTMENT OF PROPERTIES STANDING IN THE NAME OF COUNTY OF YORK, VIRGINIA and FALCON CREST HOMES ASSOCIATION

LOCATED: NELSON MAGISTERIAL DISTRICT COUNTY OF YORK, VIRGINIA DATE: NOVEMBER 12, 2019 and REVISED JANUARY 22, 2020 BAY DESIGN GROUP SURVEYING ENGINEERING & LAND PLANNING 40 CROSS STREET, SUITE 100 P.O. BOX 51 URBANNA, VIRGINIA 23175 (804) 693-2993 (804) 436-8425 JOB#19027-02 SCALE 1" = 40' SHEET 2 OF 3



Scale 1" = 40'



PARCEL A-1 TAX MAP 23-03-00-000A GPIN#P09b-4862-3326 N/F COUNTY OF YORK, VIRGINIA INST. #180014682 P.B. 11 @ PG. 249 ZONING: LB and R20 FORMER AREA=123,109.13 S.F. or 2.8261 ACRES NEW AREA=122,171.39 S.F. or 2.8046 ACRES

COMMON AREA A TAX MAP 23-04-00-000A GPIN#P09b-4719-3190 N/F FALCON CREST HOMES ASSOCIATION, INC. D.B. 892 @ PG. 671A P.B. 11 @ PGS. 624 & 625 ZONING: R20 and LB FORMER AREA = 91,440.79 S.F. or 2.0992 ACRES NEW AREA = 92,378.53 S.F. or 2.1207 ACRES

"DEER TRACE" LOT 1 TAX MAP 23-02-00-001 GPIN #P09b-4382-3305 N/F CHRISTINE K. DALEY INST. #130013800 P.B. 11 @ PG. 180 ZONING: R20

10' YORK COUNTY RESTRICTED ACCESS & DRAINAGE EASEMENT PER P.B. 11 @ PG. 625

"FALCON CREST" LOT 23 TAX MAP 23-04-00-023 GPIN #P09b-4521-3173 N/F ANTHONY B. SUTTON & BESSIE M. D. SUTTON D.B. 855 @ PG. 119 P.B. 11 @ PG. 624 & 625 ZONING: R20

"FALCON CREST" LOT 22 TAX MAP 23-04-00-022 GPIN #P09b-4603-3115 N/F LUTHER A. HENRY & PAULA J. HENRY D.B. 958 @ PG. 95 P.B. 11 @ PG. 624 & 625 ZONING: R20

"FALCON CREST" LOT 21 TAX MAP 23-04-00-021 GPIN #P09b-4671-3073 N/F CHRISTOPHER A. CALDWELL & HEIDI CALDWELL INST. #190017713 P.B. 11 @ PG. 624 & 625 ZONING: R20

"FALCON CREST" LOT 20 TAX MAP 23-04-00-020 GPIN #P09b-4755-3043 N/F RALPH L. COMPTON ET UX D.B. 1112 @ PG. 624 & 625 P.B. 11 @ PG. 624 & 625 ZONING: R20

"FALCON CREST" LOT 19 TAX MAP 23-04-00-019 GPIN #P09b-4802-3024 N/F BENJAMIN V. BONOMO & ALEXA WYATT D.B. 1112 @ PG. 624 & 625 P.B. 11 @ PG. 624 & 625 ZONING: R20

"FALCON CREST" LOT 18 TAX MAP 23-04-00-018 GPIN #P09b-4882-3017 N/F DENNIS E. NEWHOUSE & LINDA A. NEWHOUSE INST. #1600020269 P.B. 11 @ PG. 624 & 625 ZONING: R20

"FALCON CREST" LOT 17 TAX MAP 23-04-00-017 GPIN #P09b-4965-2985 N/F CLAY H. CASH & MARIA P. CASH INST. #000013297 P.B. 11 @ PG. 624 & 625 ZONING: R20

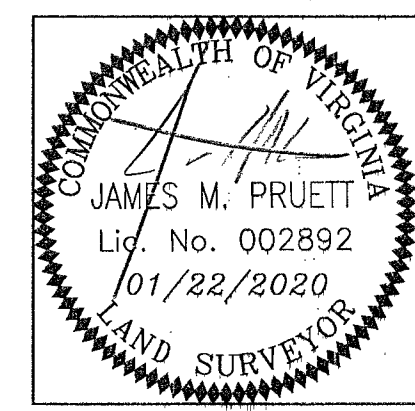
"FALCON CREST" LOT 16 TAX MAP 23-04-00-016 GPIN #009b-0042-2941 N/F ROBERT S. & HARRIETT H. SAUNDERS D.B. 1109, PG. 334 P.B. 11 @ PG. 624 & 625 ZONING: R20

"FALCON CREST" LOT 15 TAX MAP 23-04-00-015 GPIN #009b-0110-2890 N/F RANDY S. & NATALIE D. HALL INST. #100012076 P.B. 11 @ PG. 624 & 625 ZONING: R20

10' WATERLINE EASEMENT ACROSS THE FRONT OF LOTS 1-9 PER P.B. 11, PG. 625 (CITY OF NEWPORT NEWS)

APPROVED YORK COUNTY BOARD OF SUPERVISORS BY: [Signature] PLAT APPROVING AGENT DATE: 8/19/20

STATE OF VIRGINIA COUNTY OF YORK IN THE CLERK'S OFFICE OF THE CIRCUIT COURT FOR THE COUNTY OF YORK-POQUOSON THE 2nd DAY OF September, 2020, THIS MAP WAS PRESENTED AND ADMITTED TO RECORD AS THE LAW DIRECTS AS INSTRUMENT #200014392



TESTE: Kristen W. Nelson CLERK BY: [Signature]

CURVE TABLE with columns: NUMBER, DELTA ANGLE, RADIUS, ARC LENGTH, TANGENT, CHORD LENGTH, CHORD BEARING. Rows C1, C2, C3.