

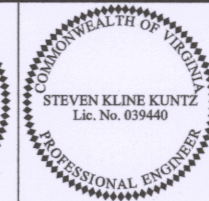
Instrument # 200014836

LIMITED ACCESS HIGHWAY By Resolution of Commonwealth Transportation Board dated Oct. 4, 1956 and as amended on Oct. 30, 2018

d:\06689661.dgn
Plotted By: mthomas



PROJECT MANAGER Janet Hedrick, P.E. - VDOT Hampton Roads District - (757)494-5478
SURVEYED BY, Dewberry Engineers Inc., 2/18
DESIGNED BY Dewberry Engineers Inc. - (703) 289-4796
SUBSURFACE UTILITY BY, Accumark, Inc., 3/18

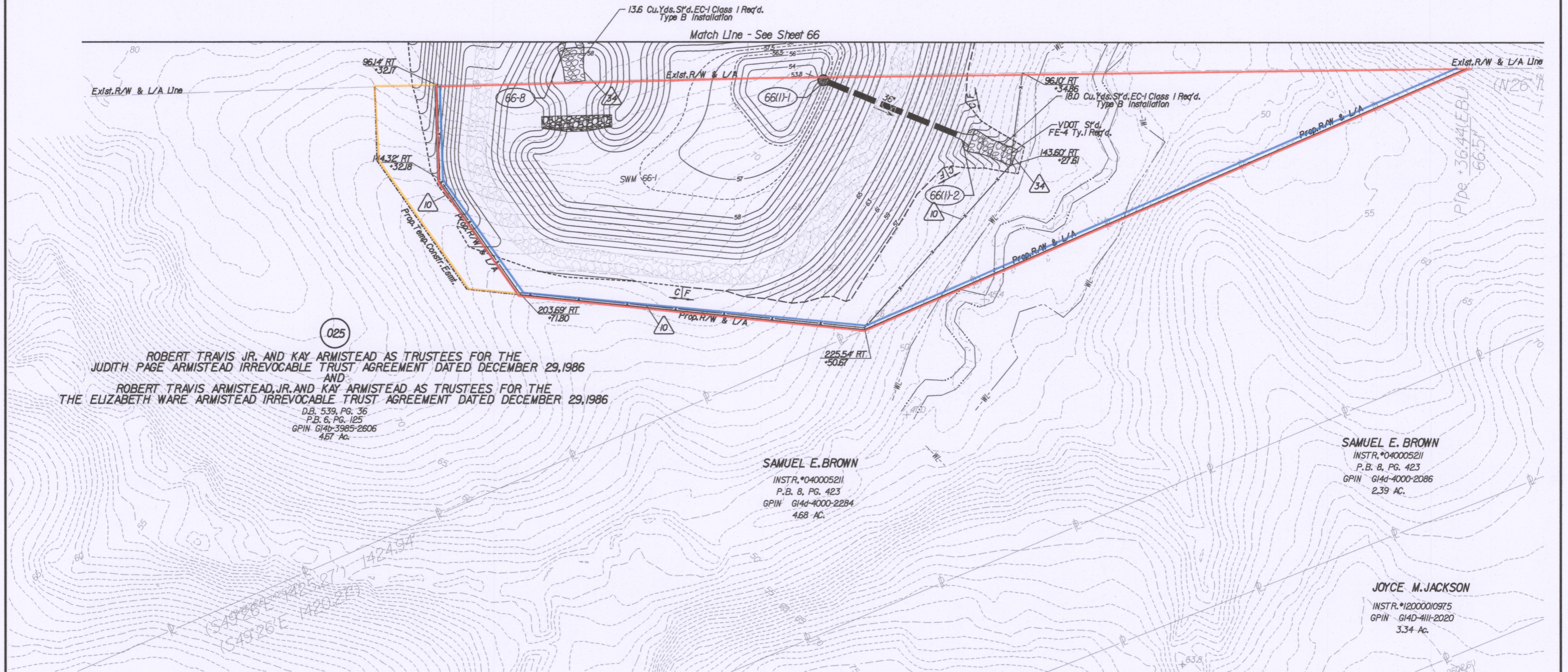


REVISED	STATE	ROUTE	STATE PROJECT	SHEET NO.
01/10/20	VA.	64	0064-965-229 R-201, C-501	66(1)

DESIGN FEATURES RELATING TO CONSTRUCTION OR TO REGULATION AND CONTROL OF TRAFFIC MAY BE SUBJECT TO CHANGE AS DEEMED NECESSARY BY THE DEPARTMENT

Steven K Kuntz
2020.01.10 20:13:16 -05'00"
Dewberry Engineers Inc.
Fairfax, Virginia
HYDRAULIC ENGINEER

Steven K Kuntz
2020.01.10 20:13:33 -05'00"
Dewberry Engineers Inc.
Fairfax, Virginia
ROADWAY ENGINEER



ROBERT TRAVIS JR. AND KAY ARMISTEAD AS TRUSTEES FOR THE
JUDITH PAGE ARMISTEAD IRREVOCABLE TRUST AGREEMENT DATED DECEMBER 29, 1986
AND
ROBERT TRAVIS ARMISTEAD, JR. AND KAY ARMISTEAD AS TRUSTEES FOR THE
THE ELIZABETH WARE ARMISTEAD IRREVOCABLE TRUST AGREEMENT DATED DECEMBER 29, 1986

D.B. 539, PG. 36
P.B. 6, PG. 125
GPIN G14b-3985-2606
4.67 Ac.

SAMUEL E. BROWN
INSTR. #040005211
P.B. 8, PG. 423
GPIN G14d-4000-2284
4.68 Ac.

SAMUEL E. BROWN
INSTR. #040005211
P.B. 8, PG. 423
GPIN G14d-4000-2086
2.39 Ac.

JOYCE M. JACKSON
INSTR. #12000010975
GPIN G14D-4111-2020
3.34 Ac.

Key Legend

- | | | |
|--|---|---|
| 1 # Curb, S/d. CG-3 Req'd. | 13 Guardrail Terminal, S/d. GR-MGS2 Req'd. | 26 Remove Exist. Structure |
| 2 Conc. Raised Median, S/d. MS-1 Req'd. | 14 Guardrail, S/d. GR-10, Type I Req'd. | 27 Remove Exist. Pipe |
| 3 Conc. Raised Median, S/d. MS-1A Req'd. | 15 Guardrail, S/d. GR-10, Type II Req'd. | 28 Remove Exist. Pole |
| 4 Asphalt Concrete Curb, S/d. MC-3B Req'd. | 16 Guardrail, S/d. GR-10, Type III Req'd. | 29 Ad Just Exist. Structure |
| 5 Underdrain Endwall, S/d. EW-12 Req'd. | 17 Trailing End Terminal, S/d. GR-MGS3 Req'd. | 30 Clean Out Exist. Structure |
| 6 Median Underdrain, S/d. UD-2 Req'd. | 18 Fixed Object Att., S/d. GR-FOA-2 Ty. I Req'd. | 31 Clean Out Existing Pipe |
| 7 Pavement Underdrain, S/d. UD-4 Req'd. | 19 Fixed Object Att., S/d. GR-FOA-2 Ty. II Req'd. | 32 Pipe To Be Abandoned and Plugged |
| 8 Crossdrain, S/d. CD-1 Req'd. | 20 Guardrail, S/d. GR-MGS4 Req'd. | 33 Pipe To Be Abandoned and Plugged |
| 9 Crossdrain, S/d. CD-2 Req'd. | 21 Conc. Median Barrier, S/d. MB-TD Req'd. | 34 Stone For Erosion Control, S/d. EC-1 Class I Req'd. |
| 10 VDOT Fence, S/d. FE-W2 Req'd. | 22 Conc. Median Barrier, S/d. MB-TF Req'd. | 35 Stone For Erosion Control, S/d. EC-1 Class II Req'd. |
| 11 Guardrail, S/d. GR-MGS1 Req'd. | 23 Bridge Pler Protection, BPPS-1 Req'd. | 36 Stone For Erosion Control, S/d. EC-1 Class A1 Req'd. |
| 12 Guardrail, S/d. GR-MGS1A Req'd. | 24 Remove Exist. Guardrail | 37 S/d. EC-3 Type B Outlet Protection Req'd. |
| | 25 Remove Exist. Fence | |

- | | |
|--|-----------------------------|
| | Denotes Full Depth Pavement |
| | Denotes Pavement Demolition |
| | Denotes Pavement Overlay |
| | Denotes Milling and Overlay |
| | Denotes Gravel |

REFERENCES
(PROFILES, DETAIL & DRAINAGE DESCRIPTION SHEETS, ETC.)

- | | |
|----------------------------|--------|
| Alignment Data | 1G |
| Erosion & Sediment Control | 2D |
| SWM #66-1 Detail | 2B(25) |
| Drainage Descriptions | 67 |
| Storm Sewer Profiles | 68 |

- | | |
|--|--------------------------------------|
| | Denotes Construction Limits In Cuts |
| | Denotes Construction Limits In Fills |

SCALE 0 25' 50'	PROJECT 0064-965-229	SHEET NO. 66(1)
--------------------	-------------------------	--------------------