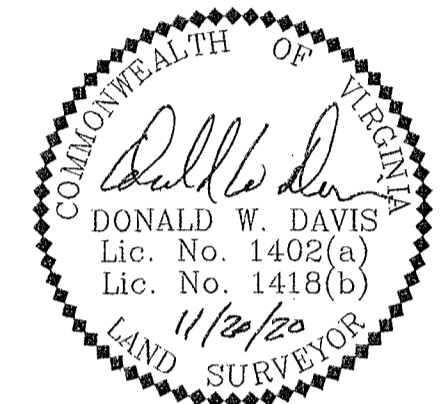
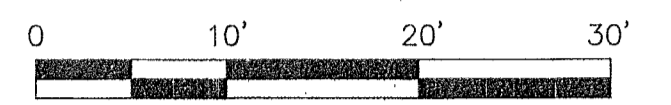


PHASE EIGHTEEN – BUILDING TWENTY SEVEN DETAIL (UNITS 35 & 36)  
 PHASE NINETEEN – BUILDING TWENTY EIGHT DETAIL (UNITS 37 & 38)

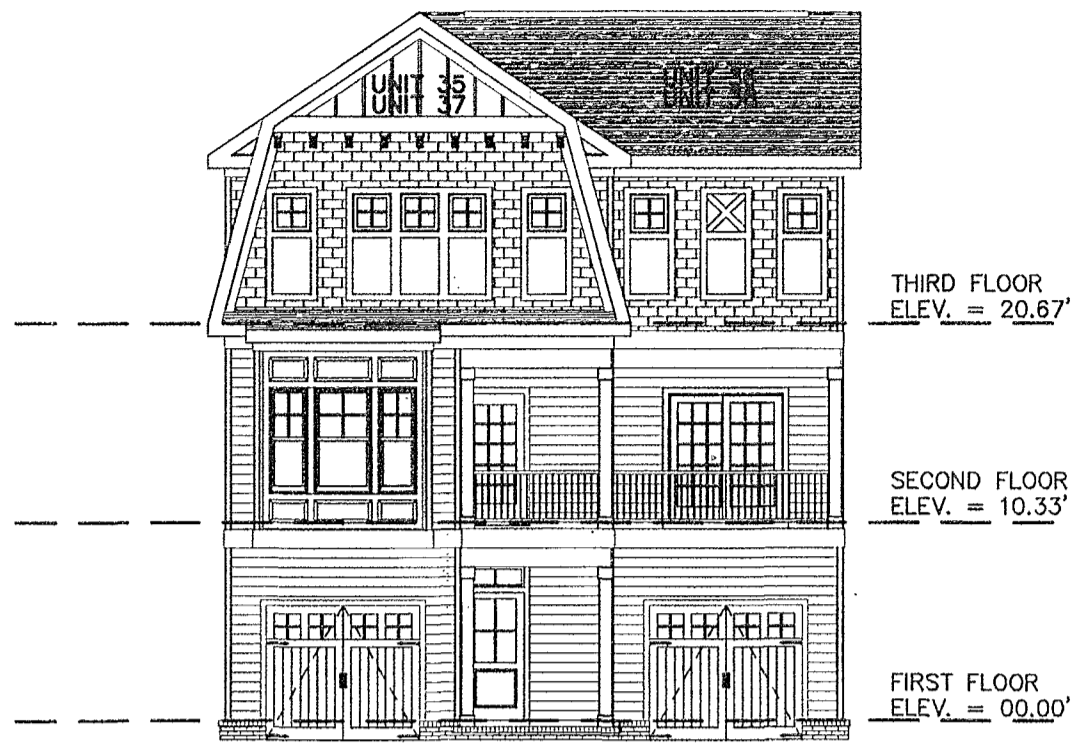
CONDOMINIUM PLAT  
 OF  
 PHASE EIGHTEEN  
 AND  
 PHASE NINETEEN  
 MAINSTAY AT  
 COMMONWEALTH GREEN  
 SECTION TWO

BETHEL MAGISTERIAL DISTRICT  
 COUNTY OF YORK, VIRGINIA  
 SCALE: 1"=10' DATE: NOVEMBER 20, 2020  
 SHEET 6 OF 6

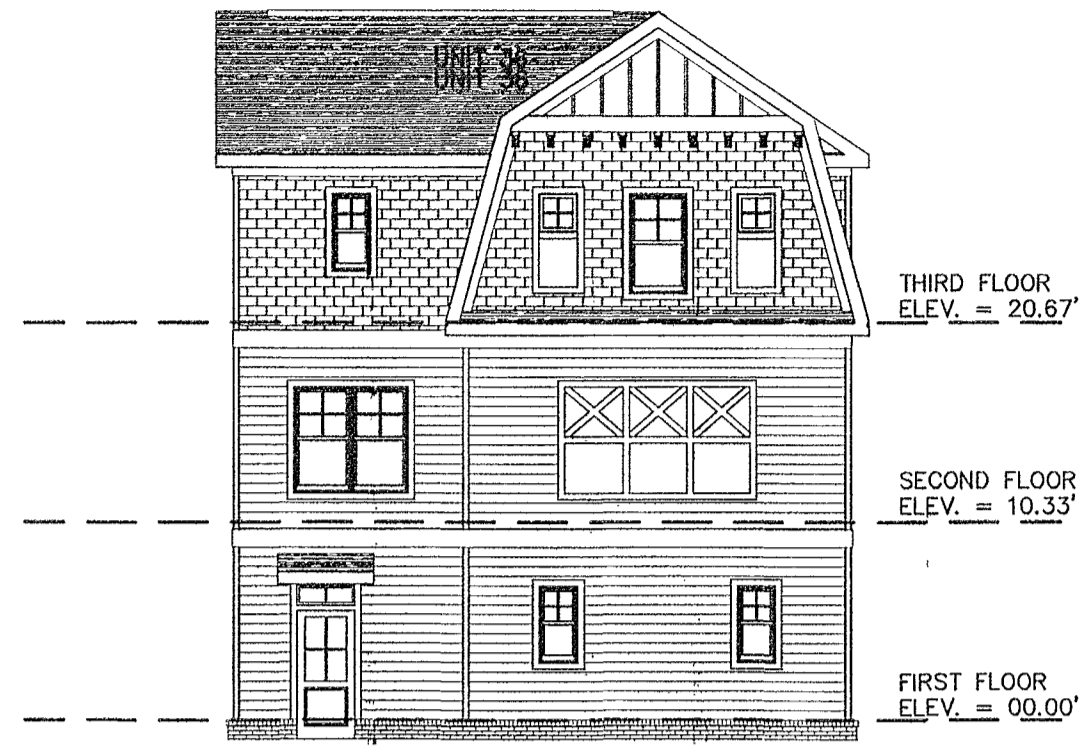
DAVIS & ASSOCIATES, P.C.  
 LAND SURVEYORS AND PLANNERS  
 3630 GEORGE WASHINGTON MEMORIAL HIGHWAY  
 YORKTOWN, VIRGINIA 23693  
 (757)867-8583



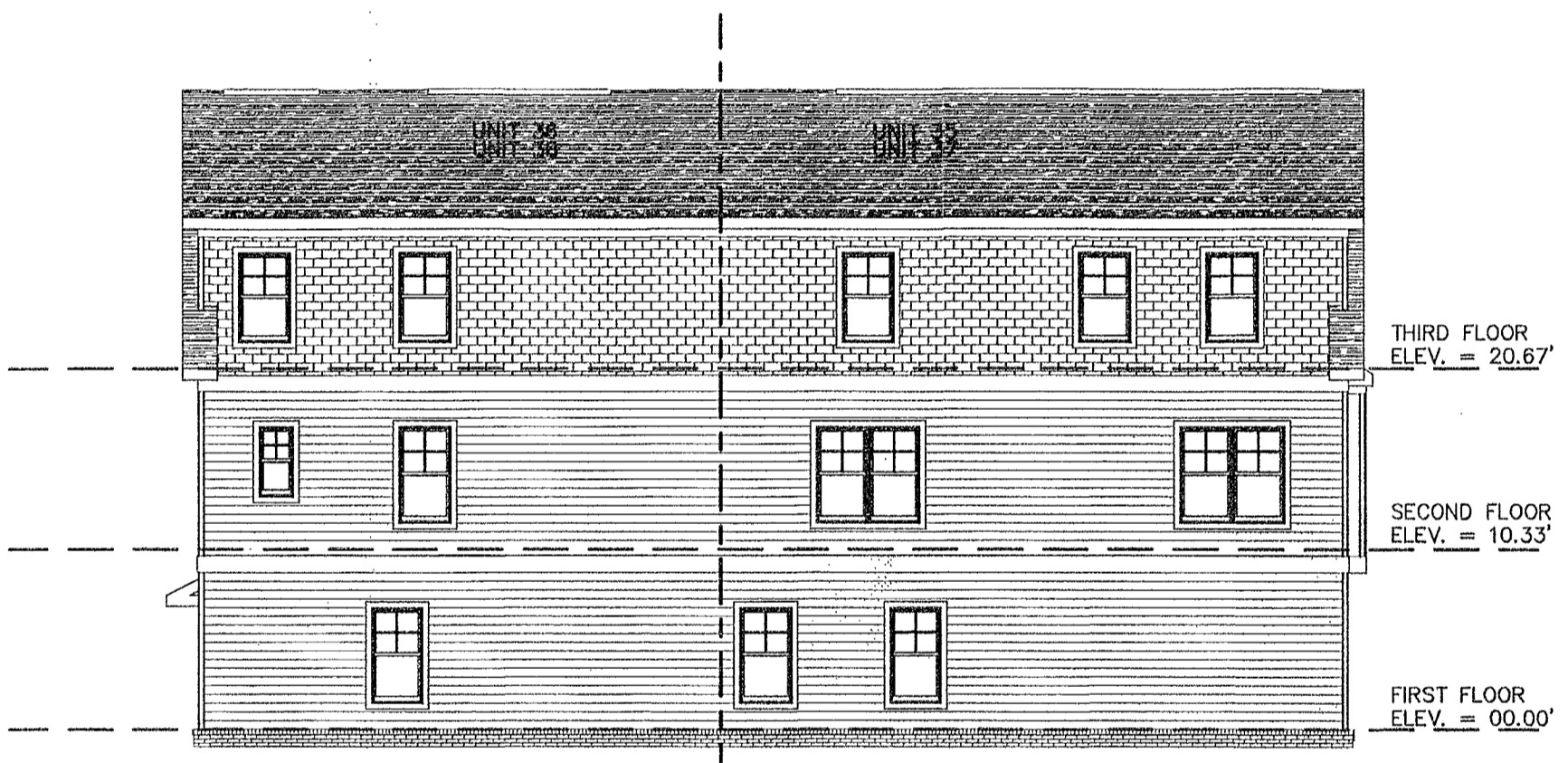
'20 DEC 21 09:10:06



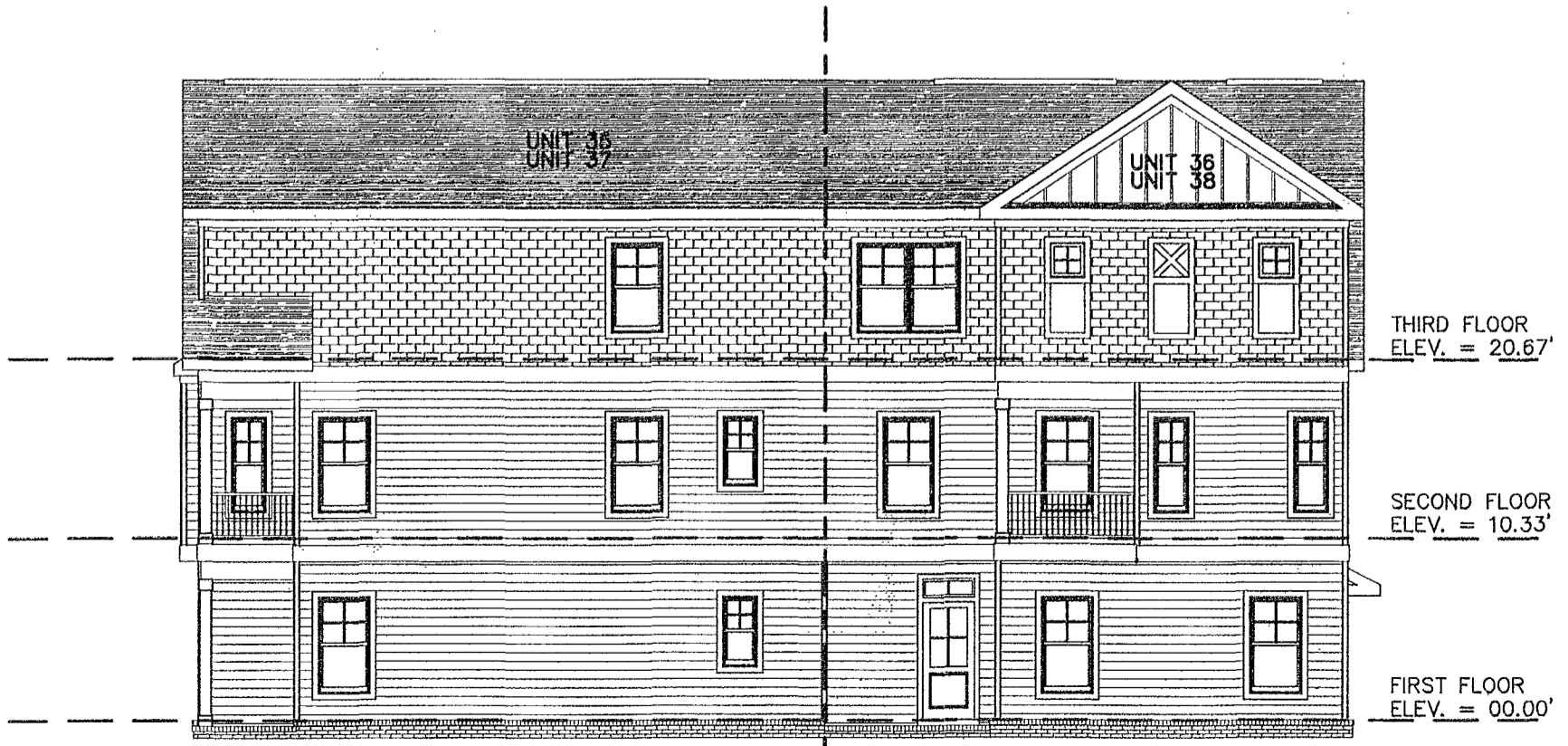
FRONT ELEVATION  
 (PRIVATE LANE SIDE)



REAR ELEVATION  
 (PUBLIC STREET SIDE)



LEFT SIDE ELEVATION



RIGHT SIDE ELEVATION

**APPROVED**  
 YORK COUNTY BOARD OF SUPERVISORS

BY: *Erin Kassel*  
 PLAT APPROVING AGENT

DATE: DECEMBER 17, 2020

STATE OF VIRGINIA  
 COUNTY OF YORK  
 IN THE CLERK'S OFFICE OF THE YORK -  
 POQUOSON CIRCUIT COURT THIS 21<sup>st</sup>  
 DAY OF December 2020, THIS MAP WAS  
 PRESENTED AND ADMITTED TO RECORD AS  
 THE LAW DIRECTS AS INSTRUMENT # 200022001

TESTE: KRISTEN N. NELSON, CLERK  
 CLERK  
 BY: Waelme Kattel, etc