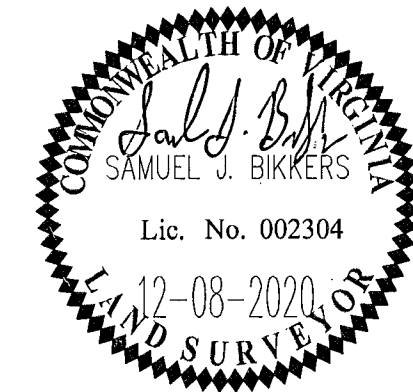
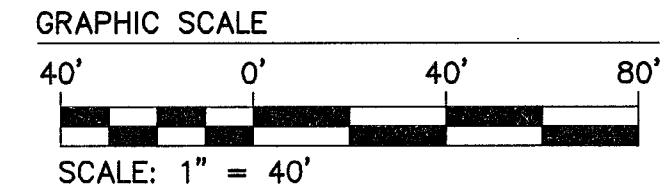


LEGEND

- EASEMENT
- RIGHT-OF-WAY
- PARCEL LINE
- ADJACENT PROPERTY LINE
- BUILDING SETBACK
- OHE OVERHEAD ELECTRIC LINE
- IRF IRON ROD FOUND
- PROPERTY CORNER SET
- CONCRETE MONUMENT SET
- BSL BUILDING SETBACK LINE
- POWER POLE
- LIGHT POLE
- IRF IRON ROD FOUND
- PROPERTY CORNER SET
- CONCRETE MONUMENT SET
- BSL BUILDING SETBACK LINE

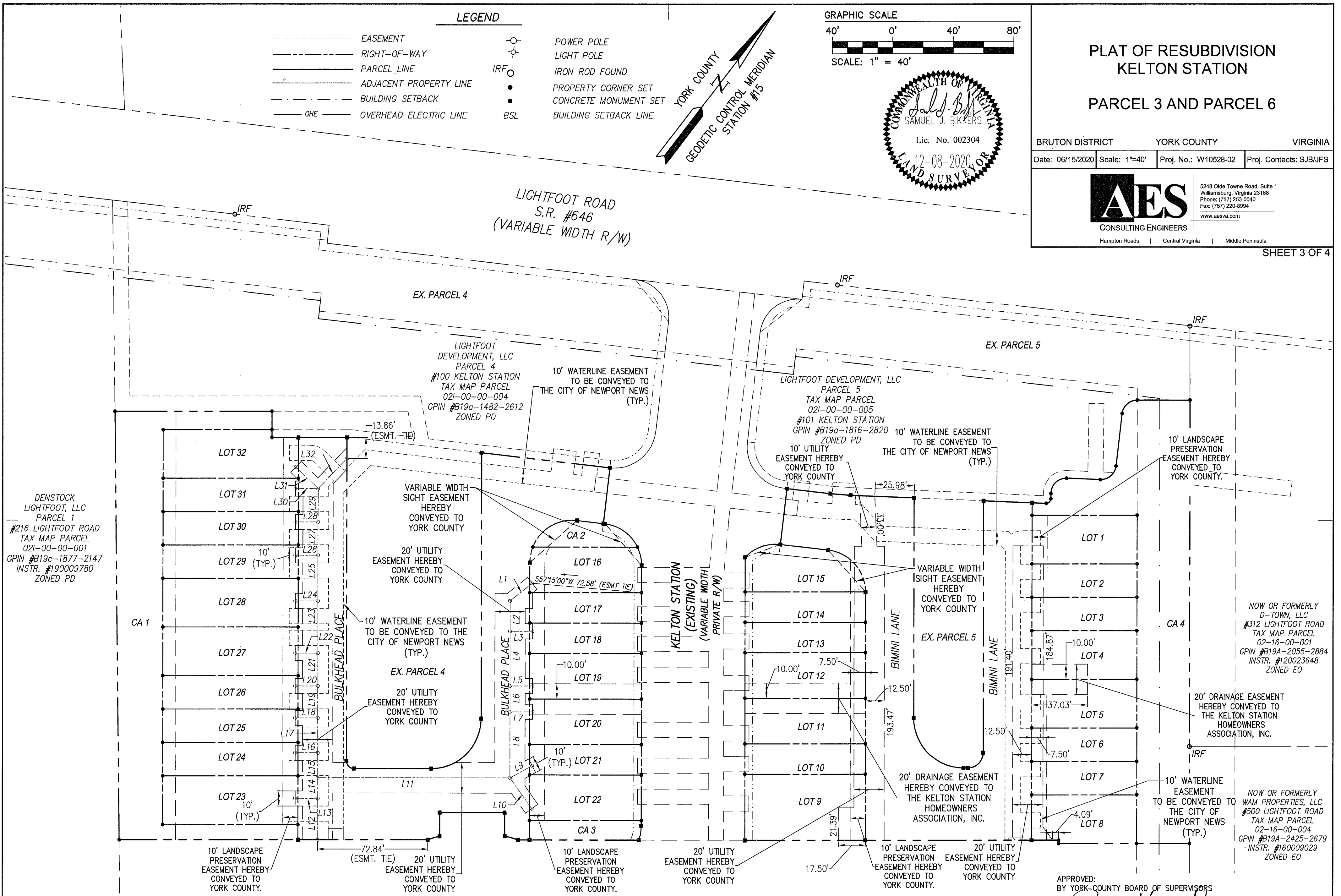


PLAT OF RESUBDIVISION
KELTON STATION
PARCEL 3 AND PARCEL 6

BRUTON DISTRICT YORK COUNTY VIRGINIA
Date: 06/15/2020 Scale: 1"=40' Proj. No.: W10528-02 Proj. Contacts: SJB/JFS

AES
CONSULTING ENGINEERS
5248 Olde Towne Road, Suite 1
Williamsburg, Virginia 23188
Phone: (757) 253-0040
Fax: (757) 220-8994
www.aesva.com

SHEET 3 OF 4



LINE TABLE

LINE	BEARING	LENGTH
L1	S14°09'45"W	18.69'
L2	S37°33'20"E	20.00'
L3	N52°26'40"E	14.88'
L4	S37°33'20"E	36.00'
L5	N52°26'40"E	14.88'

LINE	BEARING	LENGTH
L6	S37°33'20"E	17.00'
L7	N52°26'40"E	14.88'
L8	S37°33'20"E	43.50'
L9	N24°09'32"E	16.76'
L10	S73°06'39"E	24.91'

LINE	BEARING	LENGTH
L11	S52°26'40"W	127.17'
L12	N37°33'20"W	27.17'
L13	S52°26'40"W	14.87'
L14	N37°33'20"W	13.66'
L15	N37°33'20"W	16.34'

LINE	BEARING	LENGTH
L16	S52°26'40"W	14.87'
L17	N37°33'20"W	22.94'
L18	S52°26'40"W	14.87'
L19	N37°33'20"W	21.06'
L20	S52°26'40"W	14.87'

LINE	BEARING	LENGTH
L21	N37°33'20"W	21.67'
L22	S52°26'40"W	14.87'
L23	N37°33'20"W	34.33'
L24	S52°26'40"W	14.87'
L25	N37°33'20"W	30.00'

LINE	BEARING	LENGTH
L26	S52°26'40"W	14.87'
L27	N37°33'20"W	22.00'
L28	S52°26'40"W	14.87'
L29	N37°33'20"W	22.00'
L30	S52°26'40"W	14.87'

LINE	BEARING	LENGTH
L31	N83°07'02"W	20.46'
L32	N6°15'21"E	27.45'

APPROVED:
BY YORK-COUNTY BOARD OF SUPERVISORS
BY: *[Signature]* PLAT APPROVING AGENT
DATE: DECEMBER 27, 2020
STATE OF VIRGINIA
COUNTY OF YORK
IN THE CLERK'S OFFICE OF THE CIRCUIT COURT FOR THE COUNTY OF YORK-POQUOSON, THE 23rd DAY OF December, 2020
THIS MAP WAS PRESENTED AND ADMITTED TO RECORD AS THE LAW DIRECTS, AS INSTRUMENT NO. 2020 229 39
TESTE: *[Signature]* CLERK
BY: *[Signature]*

S:\0653\10528 - Lightfoot Townhomes\Survey\Parcel\Plan\W10528-02 Town Sub.plt.dwg, 12/16/2020 2:28:58 PM, frank.kalus