
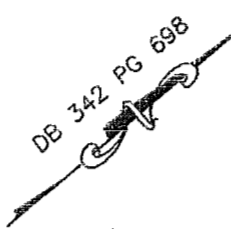


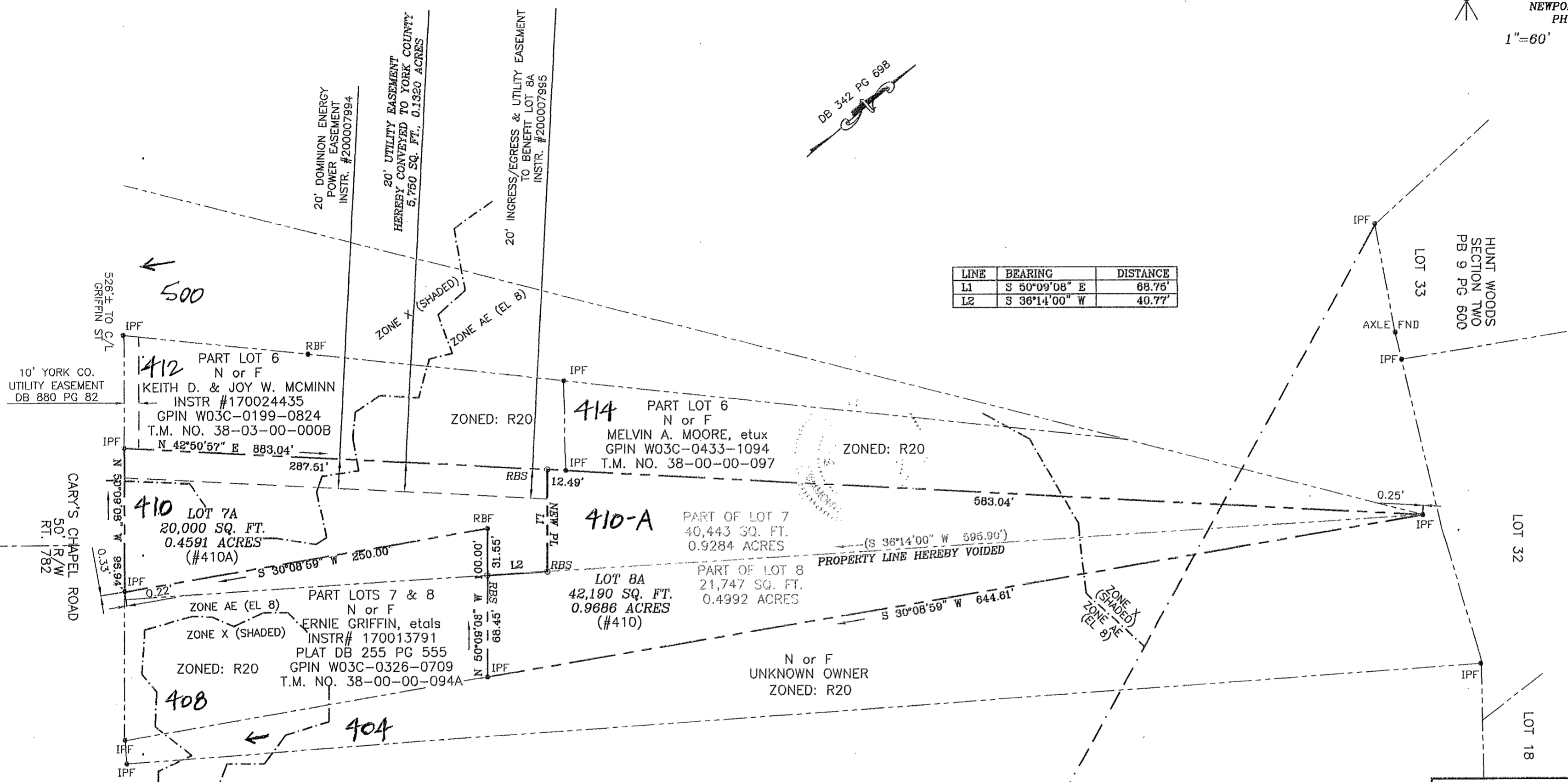
BOUNDARY LINE ADJUSTMENT AND PROPERTY LINE
VACATION ON THE PROPERTIES OF
MARQUEE HOMES, INC.

BETHEL DISTRICT
YORK COUNTY, VIRGINIA

ADPA  A.D. POTTS & ASSOCIATES, INC.
11524 JEFFERSON AVENUE
NEWPORT NEWS, VIRGINIA 23601
PHONE: (757) 595-4810
1"=60' DECEMBER 21, 2020
SHEET 2 OF 2



| LINE | BEARING | DISTANCE |
|------|---------------|----------|
| L1 | S 50°09'08" E | 68.75' |
| L2 | S 36°14'00" W | 40.77' |



10' YORK CO.
UTILITY EASEMENT
DB 880 PG 82

CARY'S CHAPEL ROAD
50' R/W
RT. 1782

HUNT WOODS
SECTION TWO
PB 9 PG 500

LOT 32

LOT 18

APPROVED
YORK COUNTY BOARD OF SUPERVISORS
BY: *Brian Kassel*
PLAT APPROVING AGENT
DATE: JANUARY 12, 2021

STATE OF VIRGINIA
COUNTY OF YORK
IN THE CLERK'S OFFICE OF THE CIRCUIT COURT
FOR THE COUNTY OF YORK-POQUOSON, ON
THIS 13 DAY OF JANUARY, 2021,
THIS MAP WAS PRESENTED AND ADMITTED TO RECORD
AS THE LAW DIRECTS, AS INSTRUMENT
NUMBER 210000933
TESTE: KRISTEN N. NELSON, CLERK
BY: *Loch Key DC*
DEPUTY CLERK

