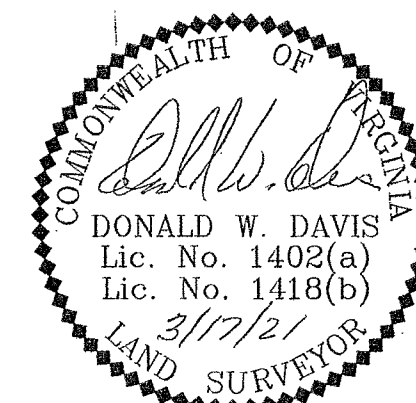


PHASE TWENTY THREE - BUILDING THIRTY TWO DETAIL (UNITS 45 & 46)

CONDOMINIUM PLAT
OF
PHASE TWENTY THREE
MAINSTAY AT
COMMONWEALTH GREEN
SECTION TWO

BETHEL MAGISTERIAL DISTRICT
COUNTY OF YORK, VIRGINIA
SCALE: 1"=10' DATE: MARCH 17, 2021
SHEET 6 OF 6

DAVIS & ASSOCIATES, P.C.
LAND SURVEYORS AND PLANNERS
3630 GEORGE WASHINGTON MEMORIAL HIGHWAY
YORKTOWN, VIRGINIA 23693
(757)867-8583



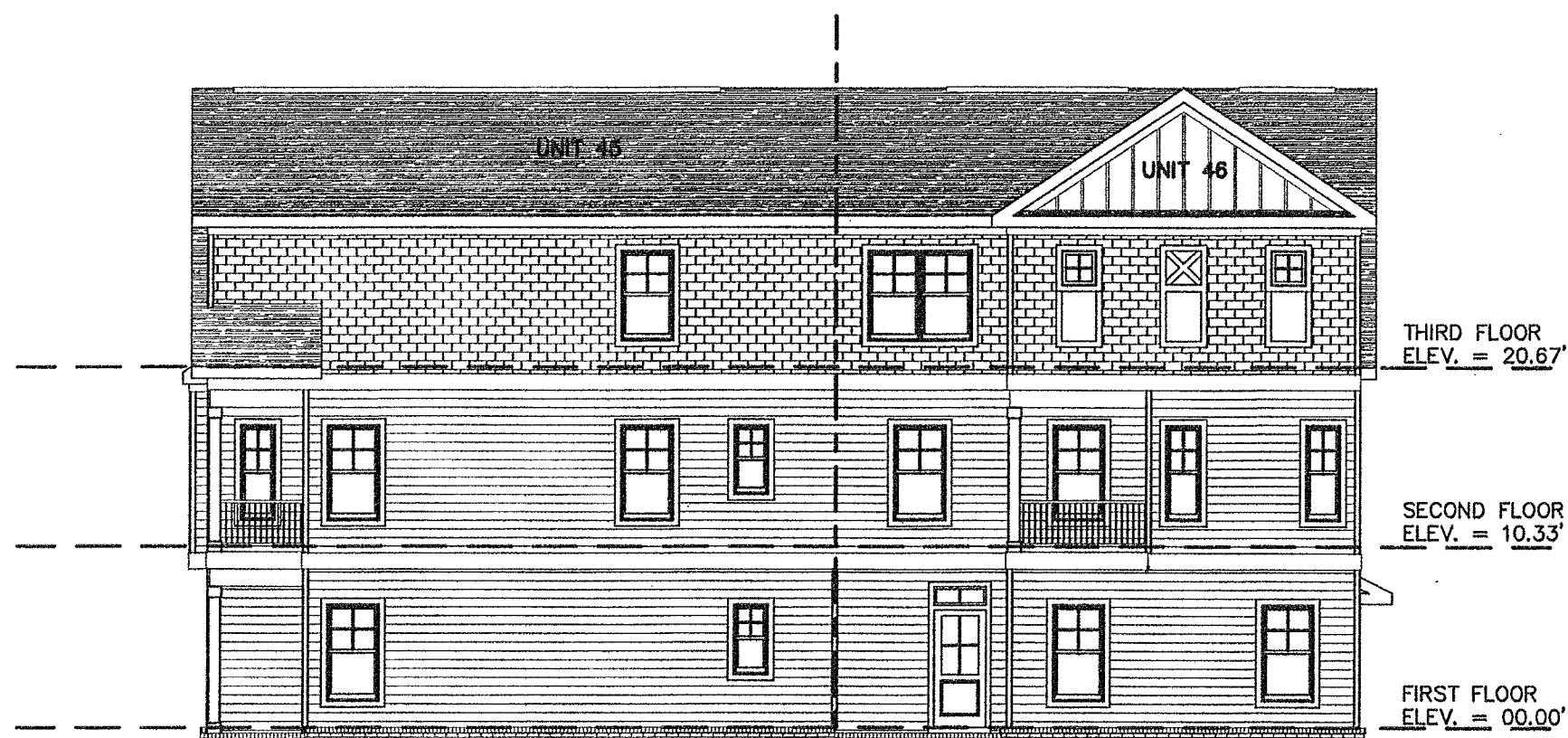
FRONT ELEVATION
(PRIVATE LANE SIDE)



REAR ELEVATION
(PUBLIC STREET SIDE)



LEFT SIDE ELEVATION



RIGHT SIDE ELEVATION

APPROVED
YORK COUNTY BOARD OF SUPERVISORS
BY: Steven Kassel
PLAT APPROVING AGENT
DATE: JUNE 16, 2021

STATE OF VIRGINIA
COUNTY OF YORK
IN THE CLERK'S OFFICE OF THE YORK
POQUOSON CIRCUIT COURT THIS 21ST
DAY OF JUNE 2021, THIS MAP WAS
PRESENTED AND ADMITTED TO RECORD AS
THE LAW DIRECTS AS INSTRUMENT # 210012409
TESTE: Kristen N. Nelson
CLERK
BY: Maclane Utzold, LLC