

CURVE TABLE							CURVE TABLE							CURVE TABLE						
CURVE #	DELTA	RADIUS	LENGTH	TANGENT	CHORD	CHORD BEARING	CURVE #	DELTA	RADIUS	LENGTH	TANGENT	CHORD	CHORD BEARING	CURVE #	DELTA	RADIUS	LENGTH	TANGENT	CHORD	CHORD BEARING
C1	7°21'09"	1071.67'	137.52'	68.85'	137.43'	N24°36'00"E	C29	13°53'40"	2025.00'	491.07'	246.74'	489.87'	S57°52'54"E	C57	12°20'42"	225.00'	48.48'	24.33'	48.38'	S33°35'59"W
C2	0°43'29"	1071.67'	13.55'	6.78'	13.55'	N27°54'51"E	C30	0°24'17"	2025.00'	14.30'	7.15'	14.30'	S64°37'36"E	C58	14°40'52"	225.00'	57.65'	28.98'	57.49'	S47°06'45"W
C3	6°37'40"	1071.67'	123.97'	62.05'	123.90'	N24°14'16"E	C31	1°41'53"	2025.00'	60.01'	30.01'	60.01'	S63°34'31"E	C59	0°26'34"	225.00'	1.74'	0.87'	1.74'	S54°40'28"W
C4	12°36'46"	275.00'	60.54'	30.39'	60.41'	S28°52'07"W	C32	1°42'03"	2025.00'	60.11'	30.06'	60.11'	S61°52'33"E	C60	41°24'35"	25.00'	18.07'	9.45'	17.68'	N34°11'28"E
C5	80°24'21"	25.00'	35.08'	21.13'	32.27'	S17°38'26"E	C33	1°42'03"	2025.00'	60.11'	30.06'	60.11'	S60°10'30"E	C61	275°20'33"	50.00'	240.28'	---	67.34'	N28°50'33"W
C6	4°19'04"	275.00'	20.72'	10.37'	20.72'	N55°41'05"W	C34	1°42'03"	2025.00'	60.11'	30.06'	60.11'	S58°28'28"E	C62	43°05'56"	50.00'	37.61'	19.75'	36.73'	S35°02'08"W
C7	89°53'16"	25.00'	39.22'	24.95'	35.32'	N81°31'50"E	C35	3°58'30"	2025.00'	140.49'	70.27'	140.46'	S55°38'11"E	C63	41°33'04"	50.00'	36.26'	18.97'	35.47'	S77°21'39"W
C8	11°16'42"	975.00'	191.92'	96.27'	191.61'	S16°11'48"W	C36	2°42'52"	2025.00'	95.93'	47.98'	95.92'	S52°17'30"E	C64	59°26'39"	50.00'	51.87'	28.55'	49.58'	N52°08'30"W
C9	5°03'18"	975.00'	86.02'	43.04'	85.99'	S19°18'30"W	C37	88°56'12"	25.00'	38.81'	24.54'	35.03'	S84°35'50"W	C65	47°14'23"	50.00'	41.22'	21.87'	40.07'	N1°12'01"E
C10	4°56'04"	975.00'	83.97'	42.01'	83.94'	S14°18'49"W	C38	18°05'00"	225.00'	71.01'	35.80'	70.72'	N49°10'14"E	C66	84°00'30"	50.00'	73.31'	45.03'	66.92'	N66°49'28"E
C11	1°17'20"	975.00'	21.93'	10.97'	21.93'	S11°12'07"W	C39	5°20'50"	225.00'	21.00'	10.51'	20.99'	N42°48'09"E	C67	58°08'40"	25.00'	25.37'	13.90'	24.30'	S79°45'23"W
C12	86°49'48"	25.00'	37.89'	23.65'	34.36'	S15°51'48"E	C40	12°44'10"	225.00'	50.01'	25.11'	49.91'	N51°50'39"E	C68	23°15'25"	175.00'	71.03'	36.01'	70.55'	S39°03'20"W
C13	34°34'32"	175.00'	105.61'	54.47'	104.01'	S76°33'58"E	C41	70°31'44"	25.00'	30.77'	17.68'	28.87'	S22°56'52"W	C69	91°28'09"	25.00'	39.91'	25.65'	35.81'	S18°18'27"E
C14	16°24'35"	175.00'	50.12'	25.23'	49.95'	S67°28'59"E	C42	250°31'45"	50.00'	218.63'	---	81.65'	S67°03'08"E	C70	0°47'13"	1975.00'	27.12'	13.56'	27.12'	S64°26'08"E
C15	18°09'57"	175.00'	55.48'	27.98'	55.25'	S84°46'15"E	C43	65°13'44"	50.00'	56.92'	31.99'	53.90'	N20°17'52"E	C71	87°34'12"	25.00'	38.21'	23.96'	34.60'	N71°23'10"E
C16	16°49'20"	275.00'	80.74'	40.66'	80.45'	N85°26'34"W	C44	47°59'06"	50.00'	41.87'	22.25'	40.66'	N76°54'16"E	C72	3°18'22"	1030.00'	59.43'	29.72'	59.42'	S29°15'14"W
C17	80°24'22"	25.00'	35.08'	21.13'	32.27'	N62°45'55"E	C45	40°12'35"	50.00'	35.09'	18.30'	34.37'	S38°06'26"W	C73	4°10'23"	2030.00'	147.85'	73.96'	147.82'	S32°59'37"W
C18	5°40'47"	1975.00'	195.78'	97.97'	195.70'	S33°44'49"W	C46	18°05'00"	175.00'	55.23'	27.85'	55.00'	N49°10'14"E	C74	1°17'54"	2030.00'	46.00'	23.00'	46.00'	S31°33'22"W
C19	3°53'44"	1975.00'	134.28'	67.17'	134.26'	S34°38'20"W	C47	90°00'00"	25.00'	39.27'	25.00'	35.36'	N4°52'16"W	C75	2°52'30"	2030.00'	101.86'	50.94'	101.85'	S33°38'34"W
C20	1°47'02"	1975.00'	61.50'	30.75'	61.49'	S31°47'56"W	C48	10°23'03"	1975.00'	357.95'	179.46'	357.46'	S55°54'41"E	C76	88°36'21"	25.00'	38.66'	24.40'	34.92'	N9°13'22"W
C21	3°02'14"	975.00'	51.68'	25.85'	51.68'	S29°23'18"W	C49	1°42'33"	1975.00'	58.91'	29.46'	58.91'	S51°34'26"E	C77	40°19'41"	225.00'	158.37'	82.62'	155.12'	N73°41'23"W
C22	92°41'55"	25.00'	40.45'	26.21'	36.18'	S18°28'47"E	C50	1°50'18"	1975.00'	63.37'	31.69'	63.37'	S53°20'52"E	C78	18°09'07"	225.00'	71.28'	35.94'	70.98'	N62°36'06"W
C23	93°20'07"	25.00'	40.73'	26.50'	36.37'	S68°30'12"W	C51	1°50'18"	1975.00'	63.37'	31.69'	63.37'	S55°11'10"E	C79	22°10'35"	225.00'	87.09'	44.09'	86.54'	N82°45'57"W
C24	11°36'38"	1030.00'	208.72'	104.72'	208.36'	S16°21'46"W	C52	0°34'49"	1975.00'	20.00'	10.00'	20.00'	S56°23'43"E	C80	34°34'32"	225.00'	135.78'	70.03'	133.73'	S76°33'58"E
C25	3°20'22"	1030.00'	60.03'	30.03'	60.03'	S12°13'38"W	C53	1°51'17"	1975.00'	63.94'	31.97'	63.93'	S57°36'47"E	C81	97°59'12"	25.00'	42.75'	28.75'	37.73'	S71°43'42"W
C26	3°20'22"	1030.00'	60.03'	30.03'	60.03'	S15°34'00"W	C54	2°33'48"	1975.00'	88.36'	44.19'	88.35'	S59°49'19"E	C82	97°06'20"	50.00'	84.74'	56.62'	74.96'	S30°33'02"E
C27	4°55'53"	1030.00'	88.65'	44.35'	88.63'	S19°42'08"W	C55	91°28'09"	25.00'	39.91'	25.65'	35.81'	N73°09'42"E	C83	5°58'00"	225.00'	23.43'	11.73'	23.42'	N89°07'46"E
C28	86°59'49"	25.00'	37.96'	23.72'	34.42'	N21°19'50"W	C56	27°28'07"	225.00'	107.87'	54.99'	106.84'	S41°09'41"W	C84	28°36'32"	225.00'	112.35'	57.37'	111.18'	S73°34'58"E

PLAT OF SUBDIVISION  
WALLER MILL HEIGHTS  
PHASE 1A AND PHASE 1B

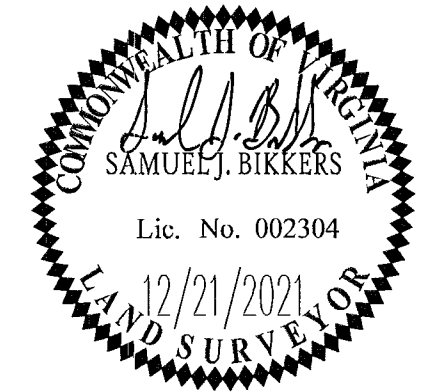
BRUTON DISTRICT  
YORK COUNTY, VIRGINIA

Date: 12/21/21 | Scale: AS NOTED | Proj. No.: 9654-05 | Proj. Contacts: PET/SJB

**AES**  
CONSULTING ENGINEERS

5248 Old Towne Road, Suite 1  
Williamsburg, Virginia 23188  
Phone: (757) 253-0040  
Fax: (757) 220-8994  
www.aesva.com

Hampton Roads | Central Virginia | Middle Peninsula



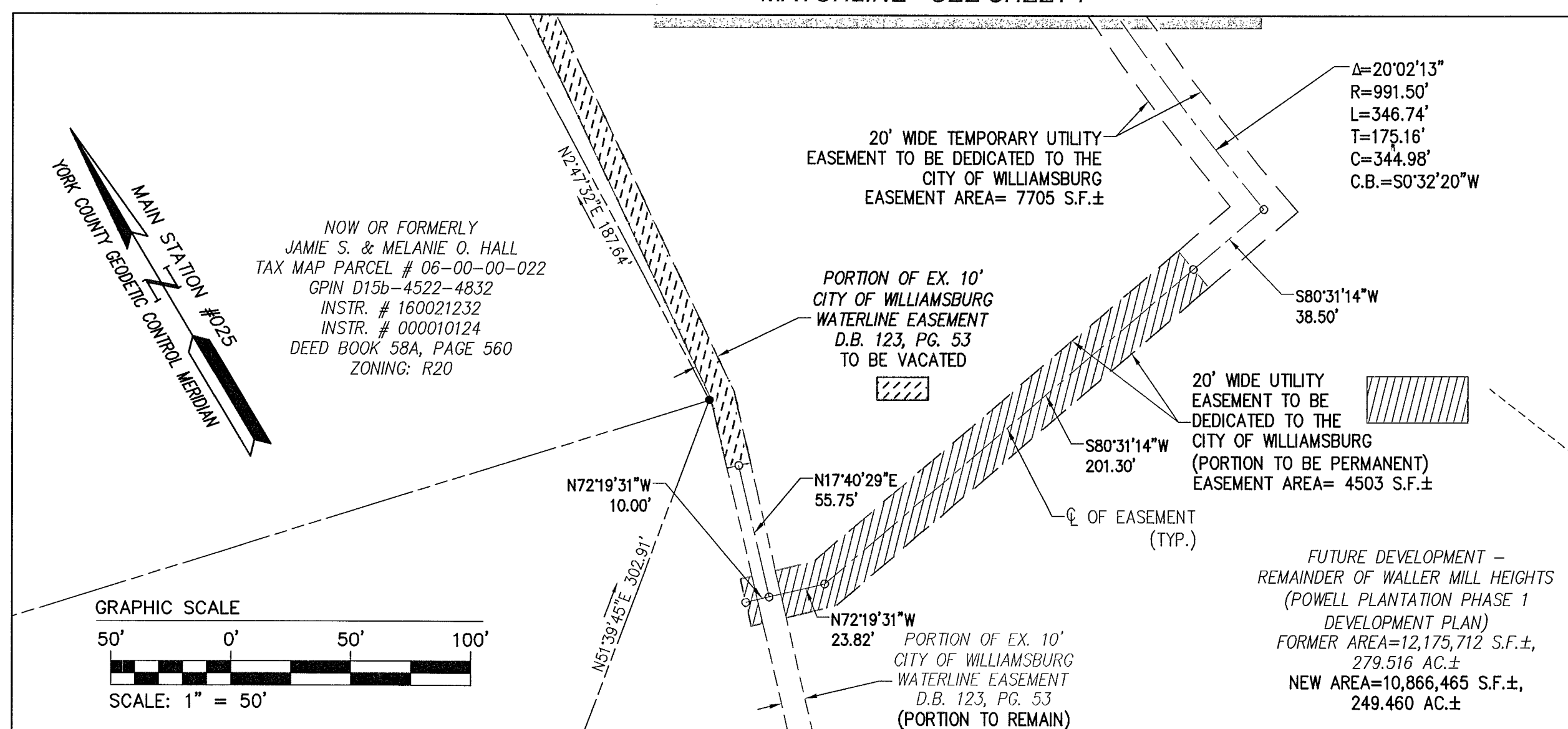
SHEET 8 OF 8

**LEGEND**

- PROPERTY LINE
- RIGHT-OF-WAY LINE
- BUILDING SETBACK LINE
- DRAINAGE EASEMENT
- UTILITY EASEMENT
- SIGHT EASEMENT
- CMF CONCRETE MONUMENT FOUND
- IRF IRON ROD FOUND
- CONCRETE MONUMENT SET
- IRON ROD SET
- ////// EASEMENT TO BE VACATED
- |||||| PORTION OF A TEMPORARY EASEMENT TO REMAIN PERMANENT
- RPA RESOURCE PROTECTION AREA
- RMA RESOURCE MANAGEMENT AREA
- BSL BUILDING SETBACK LINE
- ESMT EASEMENT

LINE TABLE

LINE	BEARING	LENGTH
L1	N29°29'00"E	40.51'
L2	N10°19'16"E	46.79'
L3	S86°35'27"E	193.33'
L4	S56°35'37"E	259.13'
L5	S7°07'36"E	41.63'
L6	N80°32'06"E	58.17'
L7	N3°06'16"W	44.28'
L8	N63°57'36"W	72.40'
L9	N49°12'18"W	44.01'
L10	S66°16'20"E	29.90'
L11	N59°46'59"W	37.80'
L12	N29°04'02"E	107.73'
L13	S29°32'27"E	60.77'
L14	S22°07'39"W	134.13'
L15	N21°21'27"E	32.34'
L16	N9°29'10"W	48.70'



APPROVED:  
BY YORK COUNTY BOARD OF SUPERVISORS

BY: *Susan Kassel* PLAT APPROVING AGENT

DATE: 9/2/22

STATE OF VIRGINIA  
COUNTY OF YORK

IN THE CLERK'S OFFICE OF THE CIRCUIT COURT FOR THE COUNTY OF YORK-POQUOSON, THE 04<sup>th</sup> DAY OF September, 20 22

THIS MAP WAS PRESENTED AND ADMITTED TO RECORD AS THE LAW DIRECTS, AS INSTRUMENT NO. 220015299

TESTE: *Kristen N. Nelson* CLERK

BY: *Warlene M. Hartzel*