

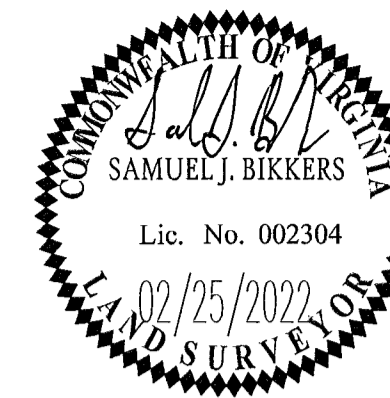
CURVE TABLE						
CURVE #	DELTA	RADIUS	LENGTH	TANGENT	CHORD	CHORD BEARING
C1	2°55'30"	475.00'	24.25'	12.13'	24.25'	N41°54'01"E
C2	12°09'12"	325.00'	68.94'	34.60'	68.81'	N46°30'52"E
C3	73°03'44"	25.00'	31.88'	18.52'	29.76'	N16°03'35"E
C4	29°42'20"	175.00'	90.73'	46.41'	89.72'	N5°37'07"W
C5	21°21'56"	175.00'	65.26'	33.01'	64.88'	N19°55'01"E
C6	18°29'49"	175.00'	56.50'	28.50'	56.25'	N39°50'54"E
C7	2°51'22"	175.00'	8.72'	4.36'	8.72'	N50°31'29"E
C8	72°25'27"	175.00'	221.21'	128.14'	206.77'	N15°44'27"E
C9	80°00'00"	25.00'	34.91'	20.98'	32.14'	S11°57'10"W
C10	100°00'00"	25.00'	43.64'	29.80'	38.31'	N78°00'24"W
C11	16°06'06"	125.00'	35.13'	17.68'	35.01'	S43°54'07"W
C12	47°35'25"	125.00'	103.83'	55.12'	100.87'	S12°03'21"W

CURVE TABLE						
CURVE #	DELTA	RADIUS	LENGTH	TANGENT	CHORD	CHORD BEARING
C13	63°41'32"	125.00'	138.95'	77.64'	131.91'	S20°06'24"W
C14	98°51'51"	25.00'	43.14'	29.20'	37.98'	S61°10'17"E
C15	12°07'43"	325.00'	68.80'	34.53'	68.67'	N75°27'39"E
C16	9°08'03"	325.00'	51.81'	25.96'	51.76'	N86°05'32"E
C17	2°25'36"	325.00'	13.77'	6.88'	13.76'	S88°07'39"E
C18	23°41'22"	325.00'	134.37'	68.16'	133.42'	N81°14'28"E
C19	5°11'49"	275.00'	24.94'	12.48'	24.93'	S89°30'45"E
C20	17°41'00"	275.00'	84.87'	42.78'	84.54'	N79°02'51"E
C21	11°20'15"	275.00'	54.42'	27.30'	54.33'	S64°32'14"W
C22	18°25'51"	275.00'	88.46'	44.62'	88.08'	S49°39'11"W
C23	52°38'54"	275.00'	252.69'	136.06'	243.90'	S66°45'43"W
C24	3°41'12"	525.00'	33.78'	16.90'	33.77'	S42°16'52"W

CURVE TABLE						
CURVE #	DELTA	RADIUS	LENGTH	TANGENT	CHORD	CHORD BEARING
C25	90°00'00"	25.00'	39.27'	25.00'	35.36'	S48°05'09"W
C26	90°00'00"	25.00'	39.27'	25.00'	35.36'	N41°54'51"W
C27	6°55'48"	175.00'	21.17'	10.60'	21.15'	N83°26'57"W
C28	16°09'37"	175.00'	49.36'	24.84'	49.20'	N71°54'14"W
C29	16°10'27"	175.00'	49.40'	24.87'	49.24'	N55°44'12"W
C30	16°08'47"	175.00'	49.32'	24.82'	49.15'	N39°34'35"W
C31	3°27'21"	175.00'	10.55'	5.28'	10.55'	N29°46'31"W
C32	58°52'00"	175.00'	179.80'	98.74'	171.99'	N57°28'50"W
C33	0°09'18"	325.00'	0.88'	0.44'	0.88'	N27°58'11"W
C34	9°07'27"	325.00'	51.76'	25.93'	51.70'	N23°19'49"W
C35	9°08'06"	325.00'	51.82'	25.96'	51.76'	N14°12'03"W
C36	9°08'03"	325.00'	51.81'	25.96'	51.76'	N5°03'58"W
C37	3°35'06"	325.00'	20.34'	10.17'	20.33'	N1°17'36"E
C38	31°08'00"	325.00'	176.60'	90.54'	174.43'	N12°28'50"W
C39	48°11'23"	25.00'	21.03'	11.18'	20.41'	N21°00'32"W
C40	4°13'31"	50.00'	3.69'	1.84'	3.69'	N42°59'28"W

CURVE TABLE						
CURVE #	DELTA	RADIUS	LENGTH	TANGENT	CHORD	CHORD BEARING
C41	67°56'47"	50.00'	59.29'	33.69'	55.88'	N6°54'19"W
C42	45°11'59"	50.00'	39.44'	20.81'	38.43'	N49°40'04"E
C43	44°50'12"	50.00'	39.13'	20.63'	38.14'	S85°18'50"E
C44	45°01'05"	50.00'	39.29'	20.72'	38.28'	S40°23'12"E
C45	45°01'05"	50.00'	39.29'	20.72'	38.28'	S4°37'53"W
C46	24°08'06"	50.00'	21.06'	10.69'	20.91'	S39°12'29"W
C47	276°22'46"	50.00'	241.19'	44.72'	66.67'	S86°54'51"E
C48	48°11'23"	25.00'	21.03'	11.18'	20.41'	S27°10'51"W
C49	6°05'46"	275.00'	29.26'	14.64'	29.25'	S0°02'16"W
C50	96°36'59"	25.00'	42.16'	28.07'	37.34'	S51°19'06"E
C51	8°48'42"	325.00'	49.98'	25.04'	49.93'	N84°46'46"E
C52	10°42'39"	275.00'	51.41'	25.78'	51.33'	S87°43'50"W
C53	108°35'02"	25.00'	47.38'	34.78'	40.60'	S28°04'59"W
C54	1°50'19"	275.00'	8.82'	4.41'	8.82'	S27°07'41"E
C55	45°53'37"	125.00'	100.12'	52.92'	97.47'	S50°59'39"E
C56	12°58'23"	125.00'	28.30'	14.21'	28.24'	S80°25'39"E
C57	58°52'00"	125.00'	128.43'	70.53'	122.85'	S57°28'50"E

CURVE TABLE						
CURVE #	DELTA	RADIUS	LENGTH	TANGENT	CHORD	CHORD BEARING
C58	1°32'51"	275.00'	7.43'	3.71'	7.43'	S218°44"W
C59	88°27'13"	25.00'	38.59'	24.33'	34.87'	N42°41'16"W
C60	90°00'00"	25.00'	39.27'	25.00'	35.36'	N48°05'09"E

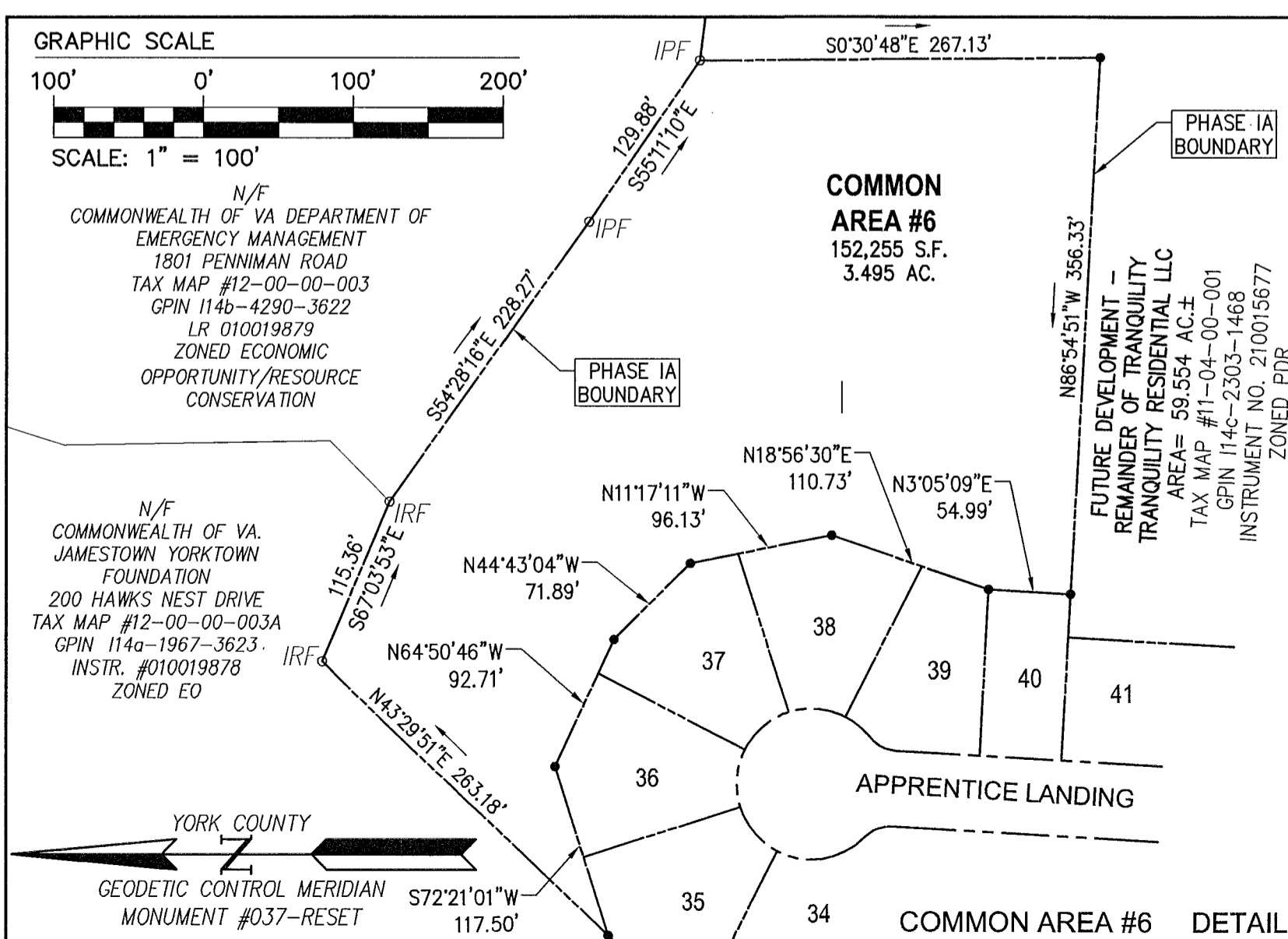


PLAT OF SUBDIVISION  
TRANQUILITY  
PHASE IA

BRUTON DISTRICT COUNTY OF YORK VIRGINIA  
Date: 09-02-21 Scale: 1"=50' Proj. No.: W10483-04 Proj. Contacts: SJB/TRS



SHEET 6 OF 6



LEGEND	
---	PROPERTY LINE
- - - -	RIGHT-OF-WAY LINE
---	BUILDING SETBACK LINE
- - - -	DRAINAGE OR UTILITY EASEMENT
---	UTILITY EASEMENT
- - - -	CENTERLINE OF ROAD
- - - -	CENTERLINE OF EASEMENT
---	100' RPA BUFFER
---	LIMITS OF WETLANDS
○ IPF	IRON PIN FOUND
○ IRF	IRON ROD FOUND
■	MONUMENT SET
●	IRON ROD SET
■	RPA
■	RESOURCE PROTECTION AREA
■	INDICATES DRAINAGE AND/OR RETAINING WALL MAINTENANCE EASEMENTS CONVEYED TO THE TRANQUILITY HOMEOWNER'S ASSOCIATION

APPROVED:  
YORK COUNTY BOARD OF SUPERVISORS  
BY: Susan Kassel PLAT APPROVING AGENT  
DATE: 8/29/22  
STATE OF VIRGINIA  
COUNTY OF YORK  
IN THE CLERK'S OFFICE OF THE CIRCUIT COURT FOR THE COUNTY OF YORK-POQUOSON THE 7th DAY OF September, 2022.  
THIS MAP WAS PRESENTED AND ADMITTED TO RECORD AS THE LAW DIRECTS, AS INSTRUMENT NO. 220015471  
TESTE: KRISTEN N. NELSON, CLERK  
BY: Wendell M. Helt, Jr. CLERK