

CURVE TABLE

CURVE	RADIUS	DELTA	ARC	TANGENT	CHORD	CHORD BRG
C1	NOT USED	---	---	---	---	---
C2	5,695.58'	19°53'06"	1,976.69'	998.38'	1,966.78'	N 44°14'05" E
C3	NOT USED	---	---	---	---	---
C4	5,695.58'	17°09'43"	1,706.01'	859.44'	1,699.64'	N 45°35'46" E

MONUMENTS LEGEND

	#5 REBAR SET	UNLESS OTHERWISE NOTED
	#5 REBAR FOUND	UNLESS OTHERWISE NOTED
	MON(F)	CONCRETE MONUMENT FOUND
	VDOT(F)	VDOT MONUMENT FOUND

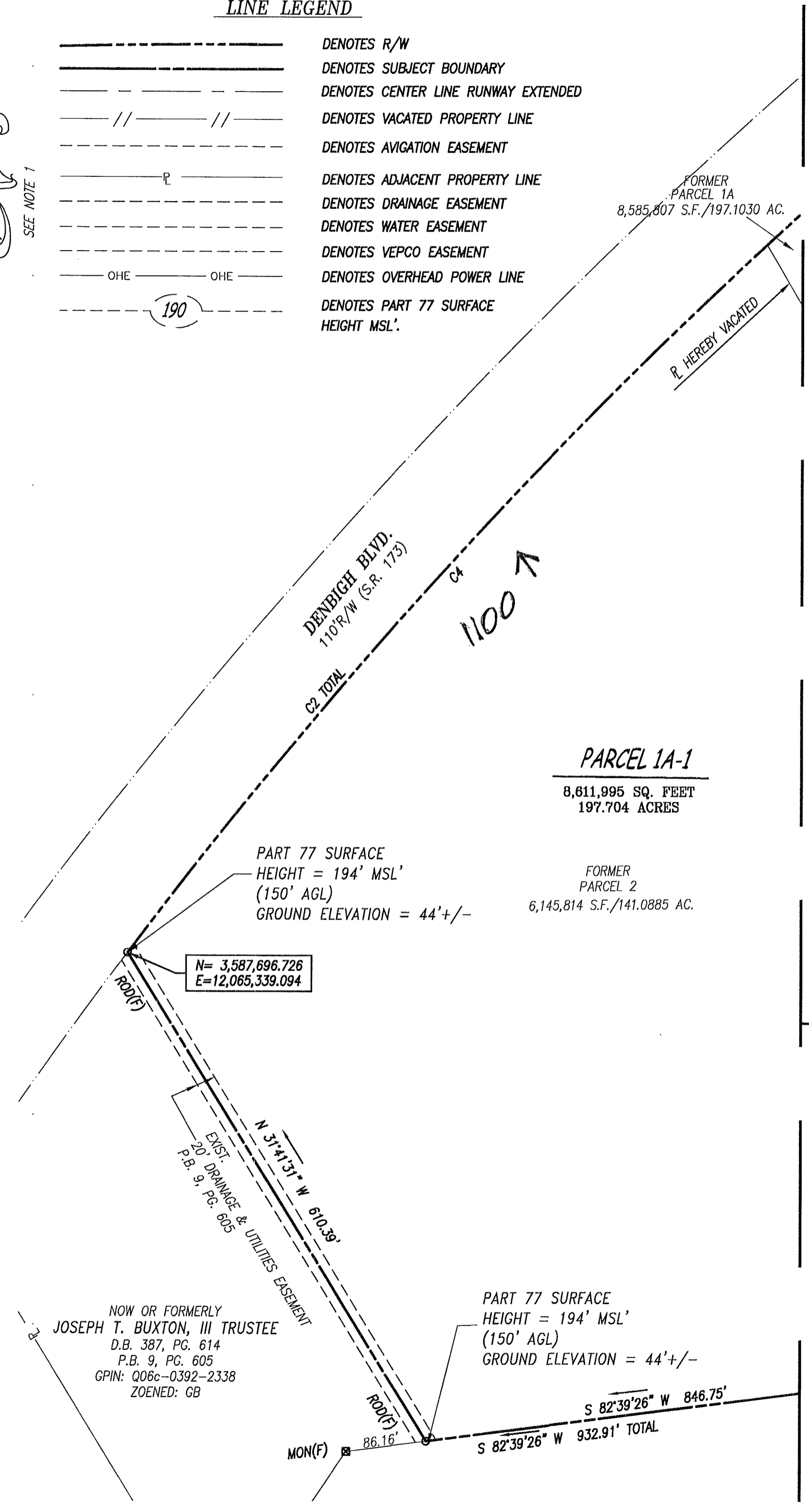
ADJOINING OWNERS

- 14 NOW OR FORMERLY McMURRAN FAMILY - YORK COUNTY PROPERTY, LLC
INST# 100007401
P.B. 6, PG. 154
GPIN: Q06c-0696-0258
ZONED: IL, PD, GB
- 15 NOW OR FORMERLY KDM3, LLC
INST# 180018226
D.B. 246, PG. 278 PLAT
GPIN: Q05a-1659-3845
ZONED: RR
- 16 NOW OR FORMERLY WILLIAM PARKER WOOLDRIDGE & SANDRA KAY WOOLDRIDGE
D.B. 393, PG. 804
D.B. 381, PG. 353 PLAT
GPIN: Q05a-1785-3607
ZONED: IL
- 17 NOW OR FORMERLY KENNETH R. HAYES & CHARLOTTE M. HAYES
D.B. 328, PG. 691
D.B. 204, PG. 62 PLAT
GPIN: Q05a-1832-3531
ZONED: IL
- 18 NOW OR FORMERLY KENNETH R. HAYES & CHARLOTTE M. HAYES
D.B. 328, PG. 691
D.B. 185, PG. 485 PLAT
GPIN: Q05a-1922-3471
ZONED: RR
- 19 NOW OR FORMERLY PENINSULA AIRPORT COMMISSION
INST# 200021562
D.B. 163, PG. 381 PLAT
GPIN: Q05a-1964-3328
ZONED: IL
- 21 NOW OR FORMERLY PENINSULA AIRPORT COMMISSION
D.B. 367, PG. 13
GPIN: Q05a-2382-3194
ZONED: IL
- 22 NOW OR FORMERLY PENINSULA AIRPORT COMMISSION
D.B. 321, PG. 769
P.B. 5, PG. 89
GPIN: Q05a-2250-2965
ZONED: IL
- 23 NOW OR FORMERLY PENINSULA AIRPORT COMMISSION
D.B. 244, PG. 68
P.B. 5, PG. 89
GPIN: Q05a-2330-2977
ZONED: IL
- 24 NOW OR FORMERLY PENINSULA AIRPORT COMMISSION
D.B. 244, PG. 68
P.B. 5, PG. 89
GPIN: Q05a-2409-2988
ZONED: IL
- 25 NOW OR FORMERLY PENINSULA AIRPORT COMMISSION
D.B. 242, PG. 510
P.B. 5, PG. 89
GPIN: Q05a-2489-2999
ZONED: IL
- 26 NOW OR FORMERLY PENINSULA AIRPORT COMMISSION
D.B. 242, PG. 510
P.B. 5, PG. 89
GPIN: Q05b-2569-3011
ZONED: IL
- 27 NOW OR FORMERLY PENINSULA AIRPORT COMMISSION
D.B. 242, PG. 463
P.B. 5, PG. 89
GPIN: Q05b-2653-3023
ZONED: IL
- 28 NOW OR FORMERLY PENINSULA AIRPORT COMMISSION
D.B. 227, PG. 240
P.B. 5, PG. 89
GPIN: Q05b-2802-3044
ZONED: IL
- 29 NOW OR FORMERLY PENINSULA AIRPORT COMMISSION
D.B. 227, PG. 240
P.B. 5, PG. 89
GPIN: Q05b-2886-3056
ZONED: IL
- 30 NOW OR FORMERLY PENINSULA AIRPORT COMMISSION
D.B. 227, PG. 240
P.B. 5, PG. 89
GPIN: Q05b-2966-3067
ZONED: IL
- 31 NOW OR FORMERLY PENINSULA AIRPORT COMMISSION
D.B. 227, PG. 240
P.B. 5, PG. 89
GPIN: Q05b-3045-3078
ZONED: IL
- 32 NOW OR FORMERLY PENINSULA AIRPORT COMMISSION
D.B. 227, PG. 240
P.B. 5, PG. 89
GPIN: Q05b-3124-3090
ZONED: IL
- 33 NOW OR FORMERLY YOUNG REVOCABLE TRUST
INST# 160023260
P.B. 5, PG. 89
GPIN: Q05b-3203-3101
ZONED: IL

LINE LEGEND

- DENOTES R/W
- DENOTES SUBJECT BOUNDARY
- DENOTES CENTER LINE RUNWAY EXTENDED
- DENOTES VACATED PROPERTY LINE
- DENOTES AVIGATION EASEMENT
- DENOTES ADJACENT PROPERTY LINE
- DENOTES DRAINAGE EASEMENT
- DENOTES WATER EASEMENT
- DENOTES VEPCO EASEMENT
- DENOTES OVERHEAD POWER LINE
- DENOTES PART 77 SURFACE HEIGHT MSL'

SEE NOTE 1



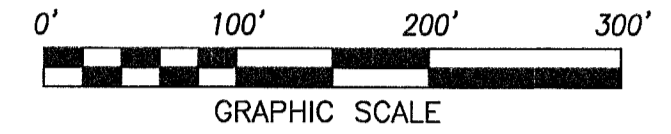
PLAT OF BOUNDARY LINE ADJUSTMENT AND PROPERTY LINE VACATION PART OF PARCEL 1A AND PART OF PARCEL 2

PROPERTY OWNED BY

PENINSULA AIRPORT COMMISSION

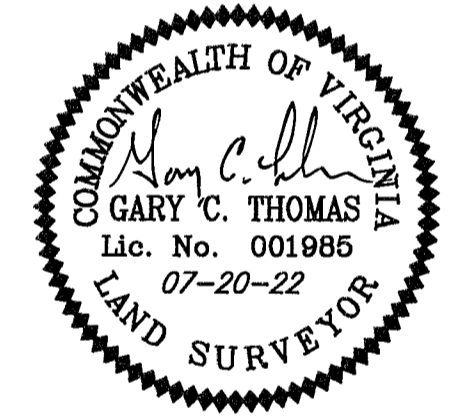
LOCATED IN GRAFTON DISTRICT YORK COUNTY, VIRGINIA

SCALE: 1" = 100' DATE: JULY 20, 2022 (SHEET 4 OF 12)



PRECISION MEASUREMENTS, INC.

SURVEYORS GPS 3-D SCANNING GIS MAPPERS VIRGINIA BEACH-RICHMOND-NEWPORT NEWS-CHANTILLY, VIRGINIA 11835 CANON BLVD, SUITE B-103 NEWPORT NEWS, VIRGINIA 23606 TEL: (757) 595-7570



APPROVED

YORK COUNTY BOARD OF SUPERVISORS

BY: Susan Kassel, PLAT APPROVING AGENT DATE: 9/23/22

STATE OF VIRGINIA: COUNTY OF YORK IN THE CLERK'S OFFICE OF THE CIRCUIT COURT FOR THE COUNTY OF YORK-POQUOSON, ON THIS 23rd DAY OF September 2022 THIS PLAT WAS PRESENTED AND ADMITTED TO RECORD AS THE LAW DIRECTS, AS INSTRUMENT NUMBER 220016710

TESTE: KRISTEN H. NELSON, CLERK BY: Barbara Hutchman, DEPUTY CLERK