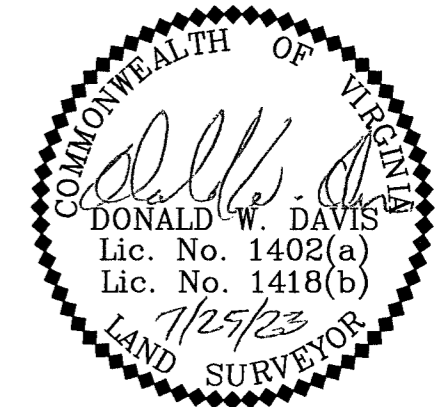
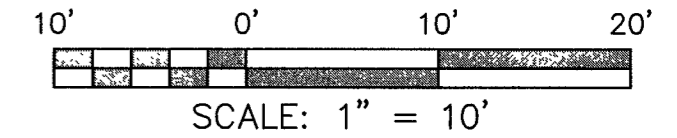


PHASE FORTY FIVE – BUILDING THIRTY FOUR DETAIL (UNITS 89 & 90)

"CONDOMINIUM PLAT AND PLANS"
 OF
PHASE FORTY FIVE
 AND
PHASE FORTY SIX
 MAINSTAY AT
 "COMMONWEALTH GREEN CONDOMINIUM"
 SECTION ONE – PARCEL 'C'
 BETHEL MAGISTERIAL DISTRICT
 COUNTY OF YORK, VIRGINIA
 SCALE: 1" = 10' DATE: JULY 25, 2023
 SHEET 7 OF 9

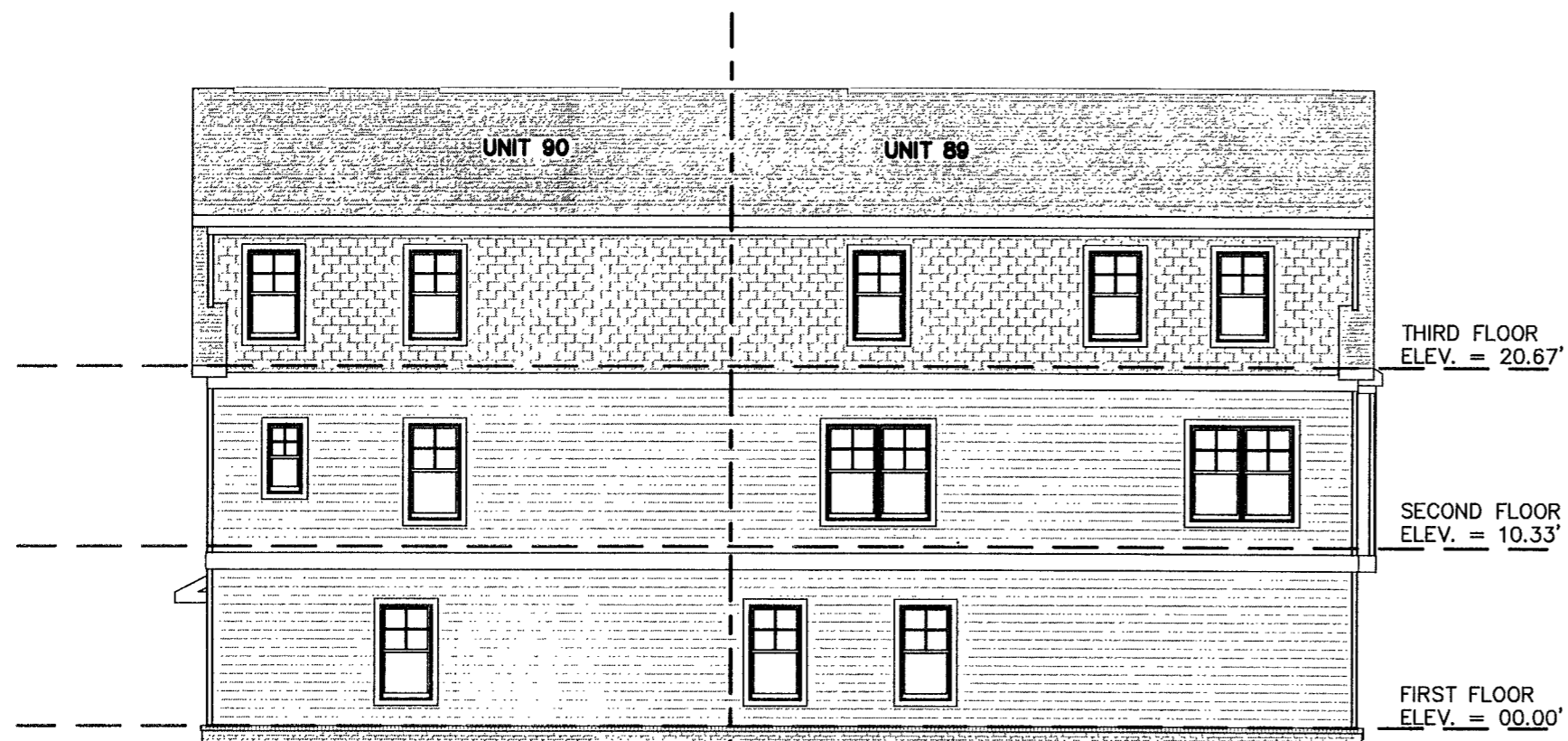
DAVIS & ASSOCIATES, P.C.
 LAND SURVEYORS AND PLANNERS
 3630 GEORGE WASHINGTON MEMORIAL HIGHWAY
 YORKTOWN, VIRGINIA 23693
 (757) 867-8583



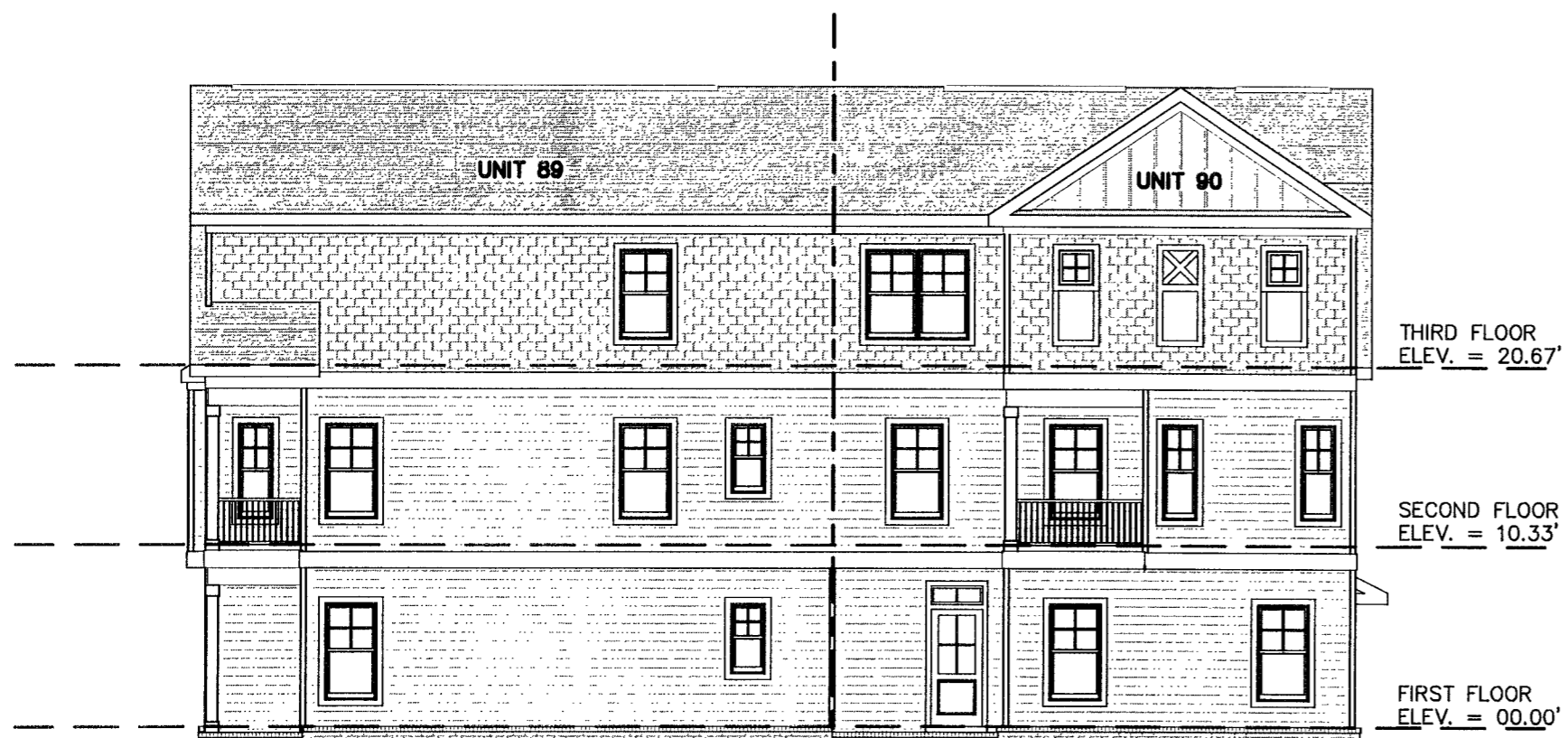
FRONT ELEVATION
 (PRIVATE LANE SIDE)



REAR ELEVATION
 (PUBLIC STREET SIDE)



LEFT SIDE ELEVATION



RIGHT SIDE ELEVATION

A P P R O V E D
 YORK COUNTY BOARD OF SUPERVISORS

BY: *Susan Kessel* for Susan Kessel
 PLAT APPROVING AGENT

DATE: 9/11/23

STATE OF VIRGINIA
 COUNTY OF YORK
 IN THE CLERK'S OFFICE OF THE YORK –
 POQUOSON CIRCUIT COURT THIS 11th
 DAY OF Sept 2023, THIS MAP WAS
 PRESENTED AND ADMITTED TO RECORD AS
 THE LAW DIRECTS AS INSTRUMENT # 230014102

TESTE: KRISTEN M. NELSON, CLERK
 CLERK

BY: *Kristen Nelson*