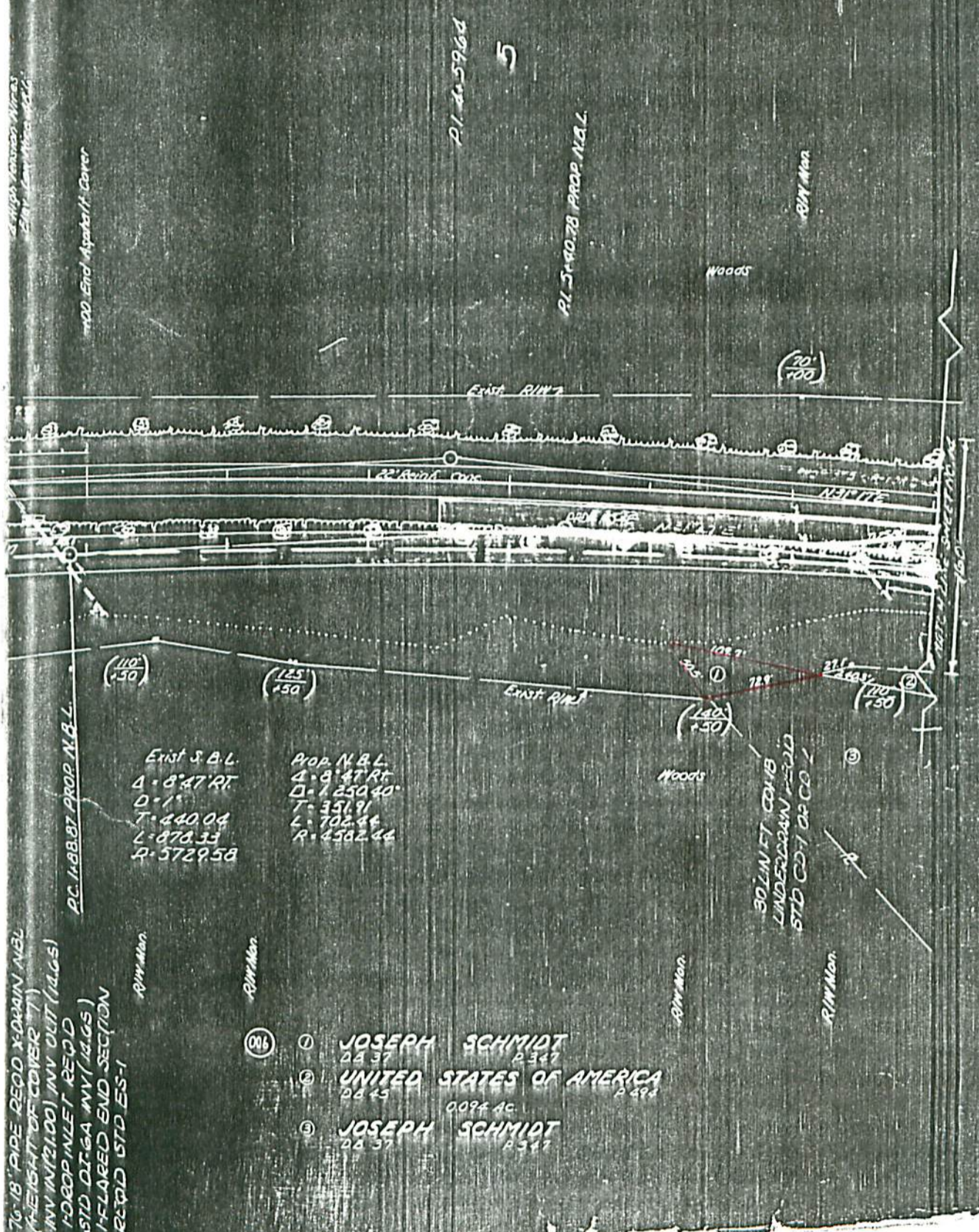


1	VI	17	2012-1-10	17
2	VI	17	2012-1-10	17

545



Exist S.B.L.	Prop. N.B.L.
4 - 8' 47" RT	4 - 8' 47" RT
D = 1'	D = 1' 250' 40"
T = 440.04	T = 351.91
L = 878.33	L = 702.44
R = 5729.58	R = 4582.44

76" 18" PIPE RECD X-DRAIN N.E.L.
 (HEIGHT OF COVER 7")
 INV (M/21.00) INV OUT (14.65)
 10" 8" INLET RECD
 STD DT-6A NY (14.65)
 1" FLARED END SECTION
 RECD STD ES-1

- ① JOSEPH SCHMIDT
DB 37 P 347
- ② UNITED STATES OF AMERICA
DB 45 P 494
- ③ JOSEPH SCHMIDT
DB 37 P 347

18A ① 7D
 (LESS + EXCEPT)
 © DB 196-336

SHPB 2-345