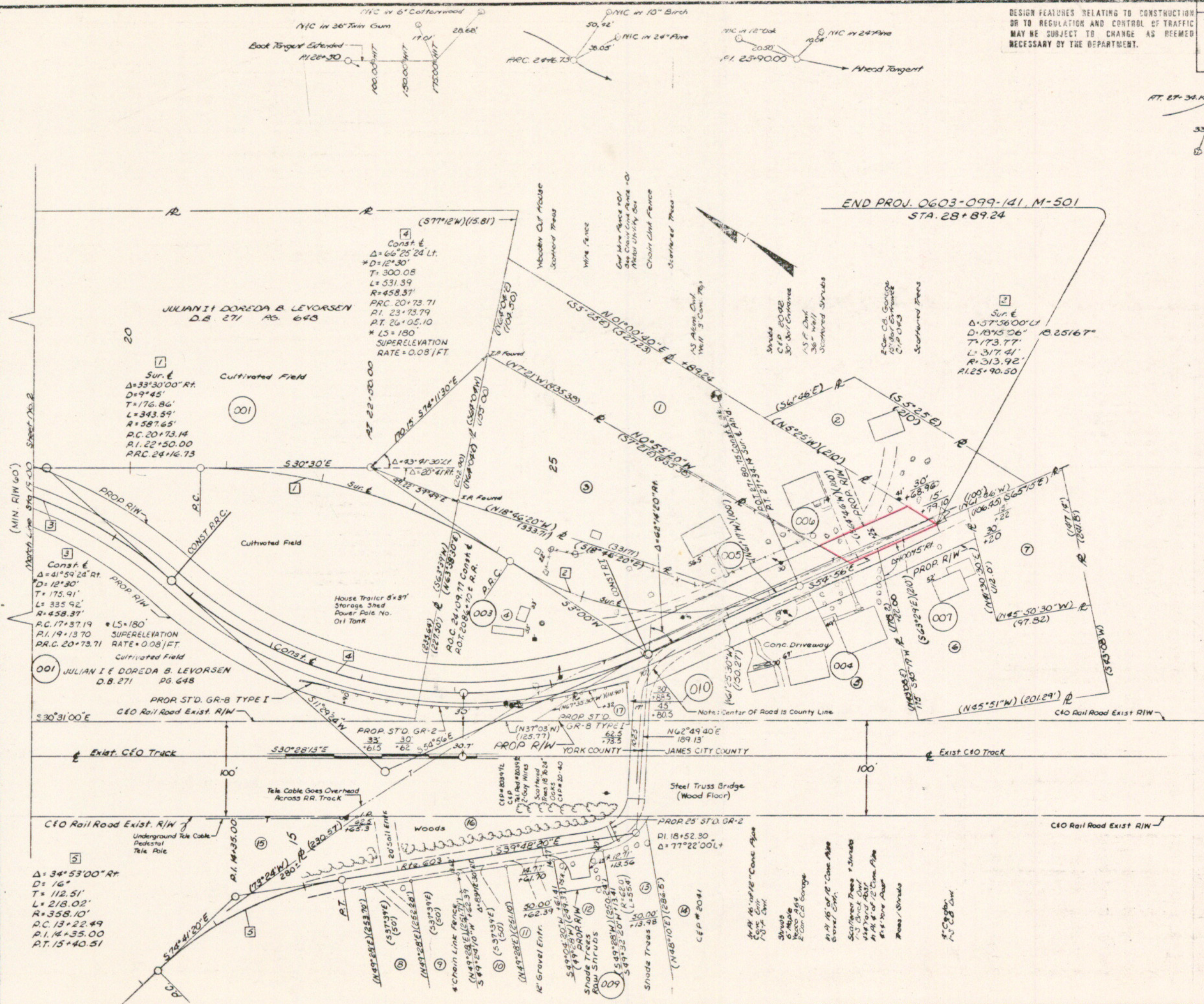


SUFFOLK DISTRICT DESIGN UNIT

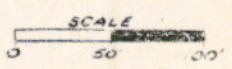
DESIGN FEATURES RELATING TO CONSTRUCTION OR TO REGULATION AND CONTROL OF TRAFFIC MAY BE SUBJECT TO CHANGE AS DEEMED NECESSARY BY THE DEPARTMENT.

REVISED	FEDERAL AID	STATE	PROJECT	ROUTE	STATE	SHEET NO.
3-28-83		VA.		603	0603-099-141, M-501	3



- 006 ① SYLVESTER M. & ANNIE R MILLER  
D.B. 132 PG. 483  
7 AC.
- 005 ② MID-STATE HOMES INC.  
D.B. 222 PG. 722  
0.48 AC.
- 003 ③ ARTIS LEE & NOVELLA MASCH  
D.B. 217 PG. 691  
1 AC.
- 003 ④ RUTH E FLOWERS ESTATE  
D.B. 159 PG. 11  
1 AC.
- 004 ⑤ FLOYD E. & MARY CATHERINE MOORE  
D.B. 50 PG. 305  
0.4 AC.
- 007 ⑥ MALONEY FAMILY TRUST  
D.B. 125 PG. 400  
0.52 AC.
- 007 ⑦ LEVI DOUGLAS JONES  
D.B. 82 PG. 937  
0.95 AC.
- 007 ⑧ ELIZABETH CARTER  
D.B. 67 PG. 168  
0.29 AC.
- 009 ⑨ JAMES A. BROWN  
D.B. 48 PG. 315  
0.29 AC.
- 009 ⑩ LEE S. & JEAN S. TRAINUN  
D.B. 172 PG. 28  
0.29 AC.
- 009 ⑪ WILLIAM JONES  
D.B. 42 PG. 480  
0.29 AC.
- 009 ⑫ WILLIE & ALBERTA PIGGOTT  
D.B. 107 PG. 30  
0.29 AC.
- 009 ⑬ MAE ELLA PRITCHETT  
D.B. 75 PG. 134  
0.3 AC.
- 009 ⑭ JUNIUS H. MOODY  
W.B. 14 PG. 104  
1 AC.
- 009 ⑮ JAMES YORK DEVELOPMENT CO.  
D.B. 169 PG. 349
- 009 ⑯ UNKNOWN PARCEL
- 010 ⑰ UNKNOWN LANDOWNER

Removal of Existing Structure over C&O Railroad is to be removed by the C&O Railroad.



PLAN NO.	PROJECT	FILE NO.	SHEET NO.
0603-099-141	M-501	192	3

125

125