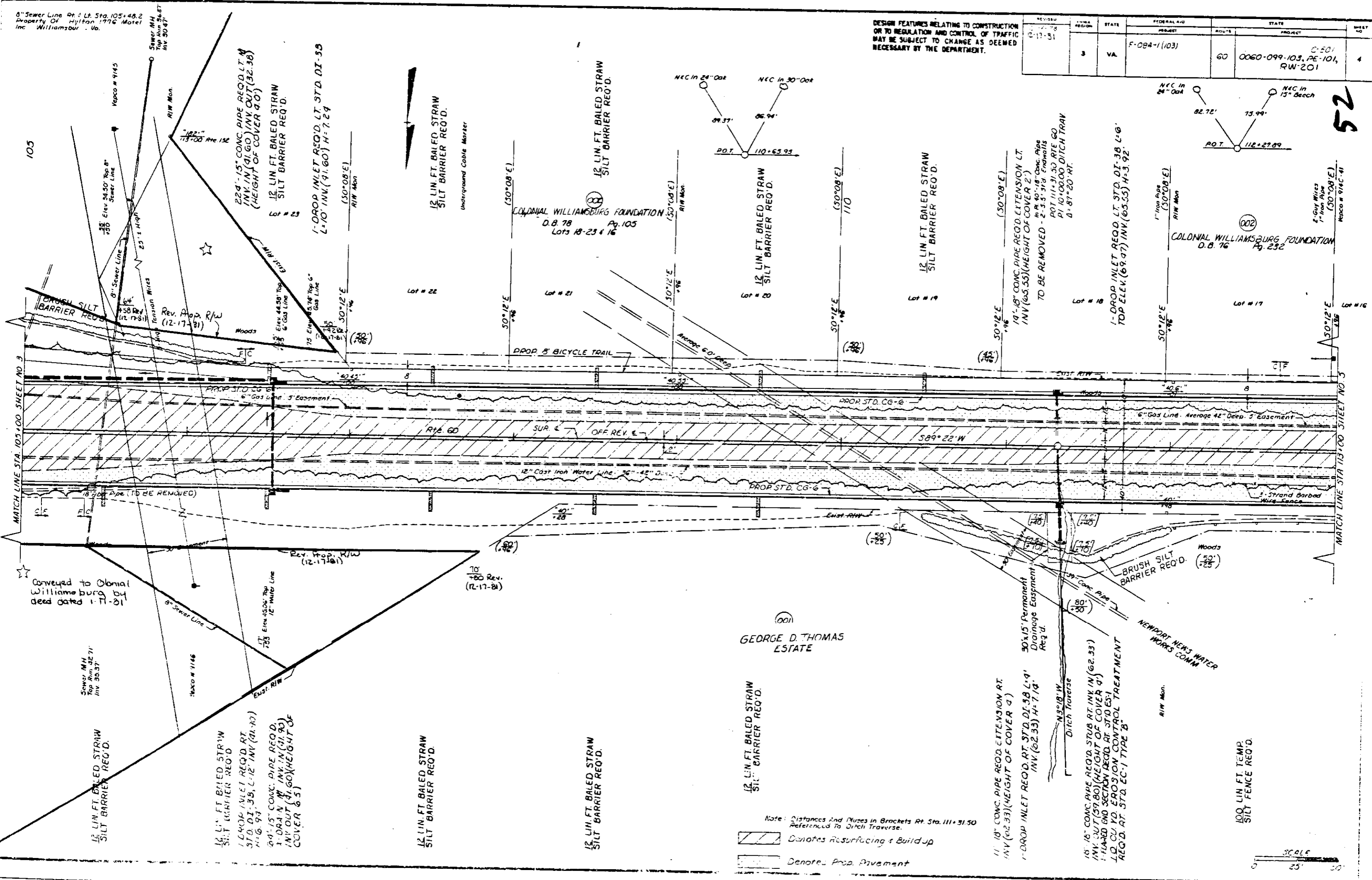


8" Sewer Line at S. Lt. Sta. 105+48.2  
 Property of Hytlan Motel  
 Williamsburg, Va.

DESIGN FEATURES RELATING TO CONSTRUCTION  
 OR TO REGULATION AND CONTROL OF TRAFFIC  
 MAY BE SUBJECT TO CHANGE AS DEEMED  
 NECESSARY BY THE DEPARTMENT.

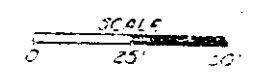
REVISION	DATE	BY	STATE	FEDERAL AID	PROJECT	ROUTE	PROJECT	SHEET NO.
1	12-17-81		VA	F-094-1(103)		60	0060-099-103, PE-101, RW-201	4



Note: Distances and Pluses in Brackets at Sta. 111+31.50  
 Referenced to Ditch Traverse.

Denotes Resurfacing & Build up

Denotes Prop. Pavement



52