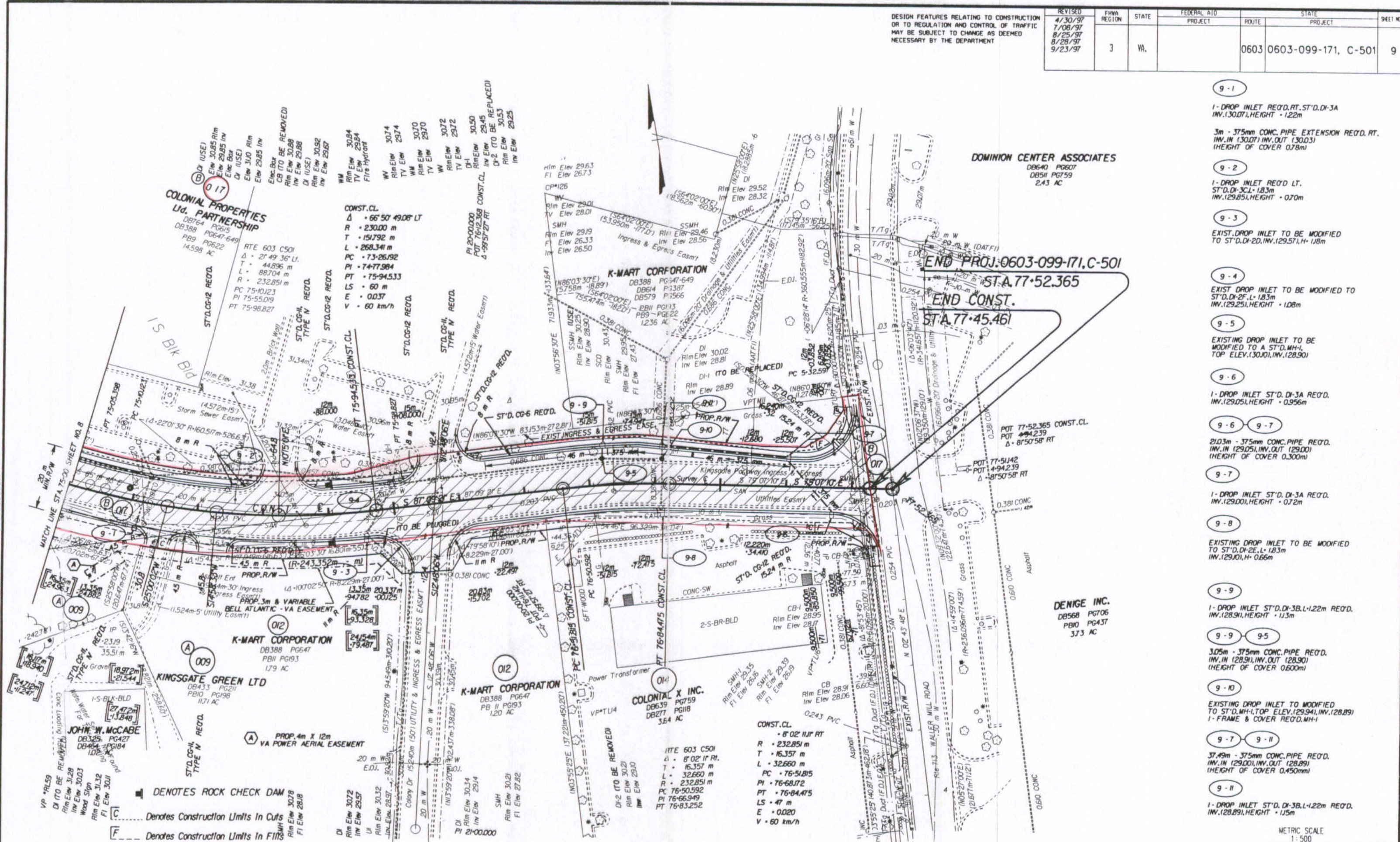


SUFFOLK DISTRICT DESIGN UNIT

DESIGN FEATURES RELATING TO CONSTRUCTION OR TO REGULATION AND CONTROL OF TRAFFIC MAY BE SUBJECT TO CHANGE AS DEEMED NECESSARY BY THE DEPARTMENT

REVISED	FHWA REGION	STATE	FEDERAL AID		STATE		SHEET NO.
			PROJECT	ROUTE	PROJECT		
4/30/97 7/08/97 8/25/97 8/28/97 9/23/97	3	VA.			0603	0603-099-171, C-501	9



- 9-1
1-DROP INLET REQ'D RT. ST'D. DI-3A
INV.(30.07), HEIGHT - 1.22m
- 3m - 375mm CONC. PIPE EXTENSION REQ'D RT.
INV.(30.07), INV.(30.03)
(HEIGHT OF COVER 0.78m)
- 9-2
1-DROP INLET REQ'D LT.
ST'D. DI-3CL-1.83m
INV.(29.85), HEIGHT - 0.70m
- 9-3
EXIST. DROP INLET TO BE MODIFIED
TO ST'D. DI-2D, INV.(29.57), H- 1.08m
- 9-4
EXIST. DROP INLET TO BE MODIFIED TO
ST'D. DI-2F, L- 1.83m
INV.(29.25), HEIGHT - 1.08m
- 9-5
EXISTING DROP INLET TO BE
MODIFIED TO A ST'D. MH-1,
TOP ELEV.(30.01), INV.(28.90)
- 9-6
1-DROP INLET ST'D. DI-3A REQ'D.
INV.(29.05), HEIGHT - 0.956m
- 9-6 9-7
210.3m - 375mm CONC. PIPE REQ'D.
INV.(29.05), INV.(29.00)
(HEIGHT OF COVER 0.300m)
- 9-7
1-DROP INLET ST'D. DI-3A REQ'D.
INV.(29.00), HEIGHT - 0.72m
- 9-8
EXISTING DROP INLET TO BE MODIFIED
TO ST'D. DI-2E, L- 1.83m
INV.(29.01), H- 0.66m
- 9-9
1-DROP INLET ST'D. DI-3B, L- 2.22m REQ'D.
INV.(28.91), HEIGHT - 1.13m
- 9-9 9-5
3.05m - 375mm CONC. PIPE REQ'D.
INV.(28.91), INV.(28.90)
(HEIGHT OF COVER 0.600m)
- 9-10
EXISTING DROP INLET TO BE MODIFIED
TO ST'D. MH-1, TOP ELEV.(29.94), INV.(28.89)
1-FRAME & COVER REQ'D, MH-1
- 9-7 9-11
37.49m - 375mm CONC. PIPE REQ'D.
INV.(29.00), INV.(28.89)
(HEIGHT OF COVER 0.450m)
- 9-11
1-DROP INLET ST'D. DI-3B, L- 2.22m REQ'D.
INV.(28.89), HEIGHT - 1.15m

FIGURES IN BRACKETS AND DOT - DASHED LINES DENOTE PERMANENT EASEMENTS.

/// DENOTES DEMOLITION OF PAVEMENT

