

Design File: /home/gsl/gsl/arp/021509.dwg
Design sheet no: 143

SUFFOLK DISTRICT DESIGN UNIT

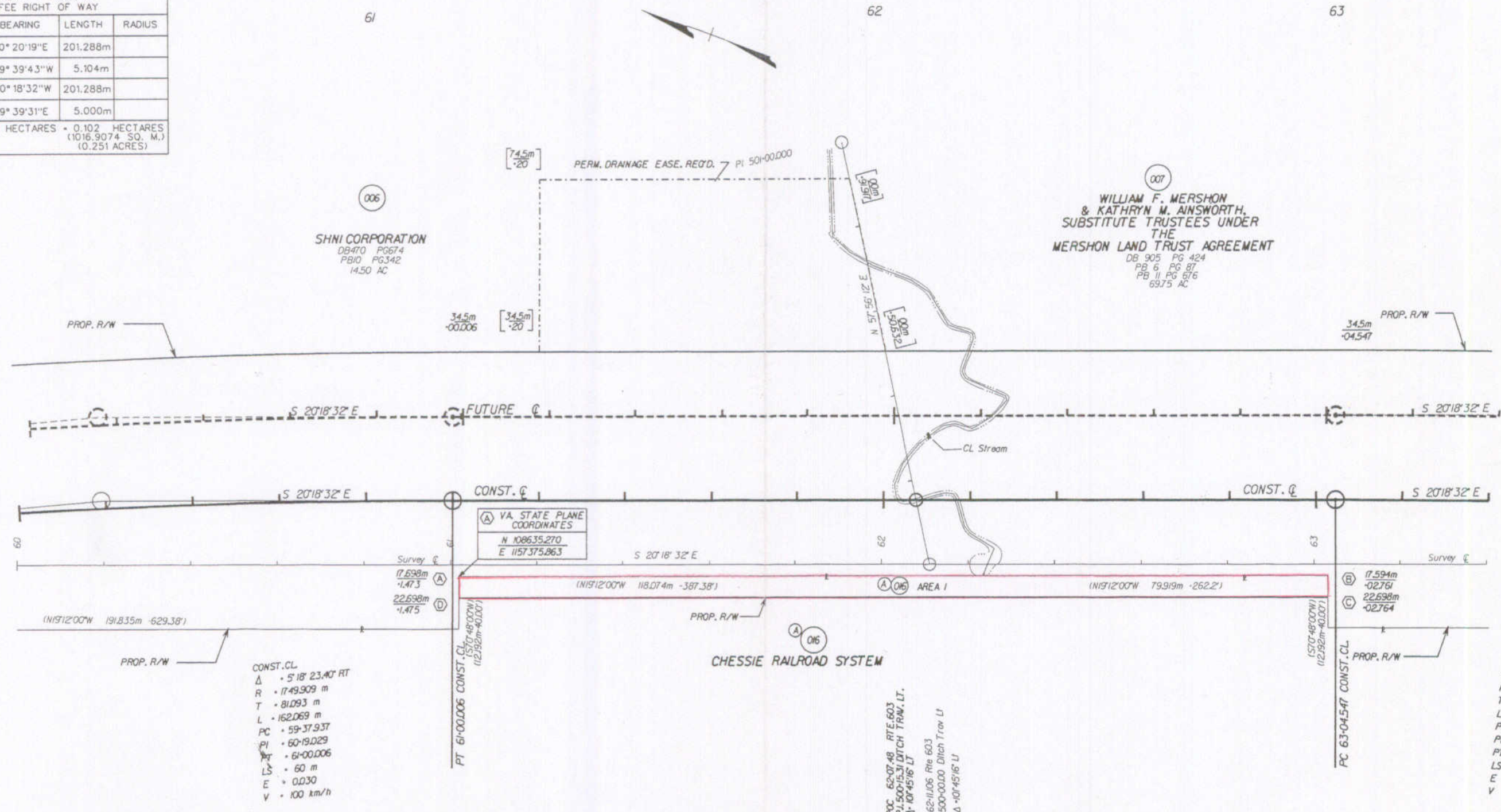
DESIGN FEATURES RELATING TO CONSTRUCTION OR TO REGULATION AND CONTROL OF TRAFFIC MAY BE SUBJECT TO CHANGE AS DEEMED NECESSARY BY THE DEPARTMENT

REVISED	FHWA REGION	STATE	FEDERAL AID PROJECT	ROUTE	STATE PROJECT	SHEET NO.
	3	VA.		0603	0603-099-171, C-501	1G

METES AND BOUNDS

METES AND BOUNDS FOR CHESSIE RAILROAD SYSTEM

AREA 1 PARCEL 016 FEE RIGHT OF WAY			
LINE	BEARING	LENGTH	RADIUS
(A) (B)	S20° 20' 19" E	201.288m	
(B) (C)	S69° 39' 43" W	5.104m	
(C) (D)	N20° 18' 32" W	201.288m	
(D) (A)	N69° 39' 31" E	5.000m	
TOTAL HECTARES = 0.102 HECTARES (1016.9074 SQ. M.) (0.251 ACRES)			



SHNI CORPORATION
DB470 PG674
PB10 PG342
14.50 AC

WILLIAM F. MERSHON & KATHRYN M. AINSWORTH, SUBSTITUTES TRUSTEES UNDER THE MERSHON LAND TRUST AGREEMENT
DB 905 PG 424
PB 6 PG 87
PB 11 PG 676
69.75 AC

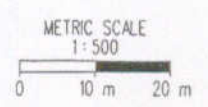
VA. STATE PLANE COORDINATES
N 108635.270
E 1157375.863

CONST. CL
Δ = 5' 18" 23.40° RT
R = 1749.909 m
T = 81.093 m
L = 162.069 m
PC = 59.37.937
PI = 60.19.029
PT = 61.00.006
LS = 60 m
E = 0.030
V = 100 km/h

CONST. CL
Δ = 5' 18" 22.6° RT
R = 1750.00 m
T = 81.094 m
L = 162.071 m
PC = 63.04.547
PI = 63.85.640
PT = 64.66.618
LS = 60 m
E = 0.030
V = 100 km/h

POC 62-07-48 RTE 603
PL 500+15.31 DITCH TRAV. LT.
Δ = 10° 45' 16" LT
62-11-06 Rte 603
500+00.00 Ditch Trav LI
Δ = 10° 45' 16" U

FIGURES IN BRACKETS AND DOT - DASHED LINES DENOTE PERMANENT EASEMENTS.
FOR ROADWAY CONSTRUCTION DETAILS SEE PLAN SHEETS 5 & 6



SURVEYED BY: E. N. HOLLOWELL
SUPERVISED BY: F. J. J. 9601 LT. #6, 17371 925-2558
CADD OPERATOR: hollowell/arp/021509.dwg
REVISED BY: E. L. STRONG FELD

02/25/97 13:35:5