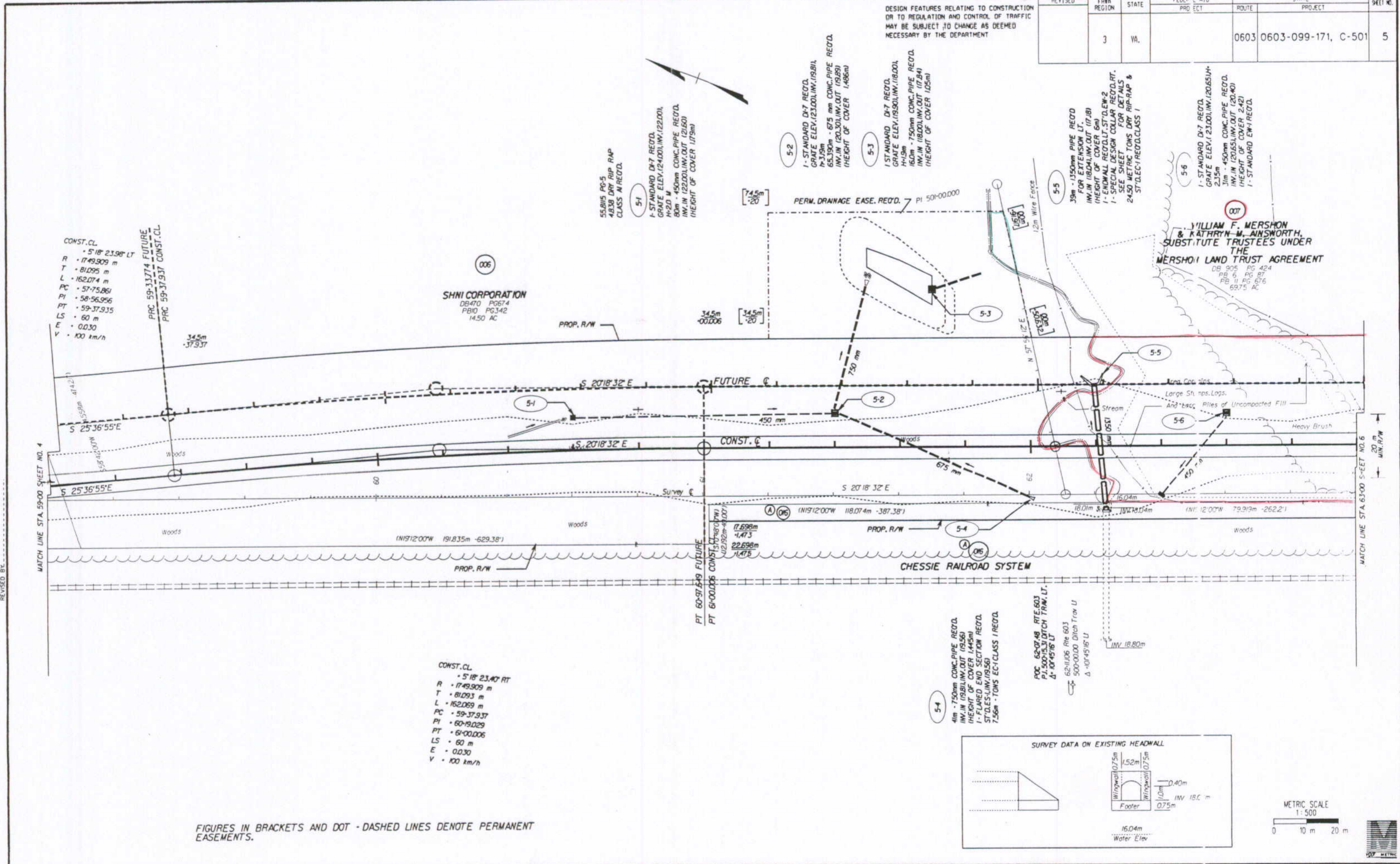


SUFFOLK DISTRICT DESIGN UNIT

SURVEYED BY: J. N. HOLLOWAY
 SUPERVISED BY: R. J. SCOTT, JR. (1757) 925-2558
 DESIGNED BY: R. J. SCOTT, JR. (1757) 925-2558
 CADD OPERATOR: /home/ps/ps/10221505.dwg
 REVISED BY:

REVISED	FHWA REGION	STATE	FEDERAL AID PROJECT	ROUTE	STATE PROJECT	SHEET NO.
	3	VA.		0603	0603-099-171, C-501	5

DESIGN FEATURES RELATING TO CONSTRUCTION OR TO REGULATION AND CONTROL OF TRAFFIC MAY BE SUBJECT TO CHANGE AS DEEMED NECESSARY BY THE DEPARTMENT



CONST. CL.
 • 5'18" 23.98' LT
 R • 1749.909 m
 T • 81.095 m
 L • 162.074 m
 PC • 57-75.861
 PI • 58-56.956
 PT • 59-37.935
 LS • 60 m
 E • 0.030
 V • 100 km/h

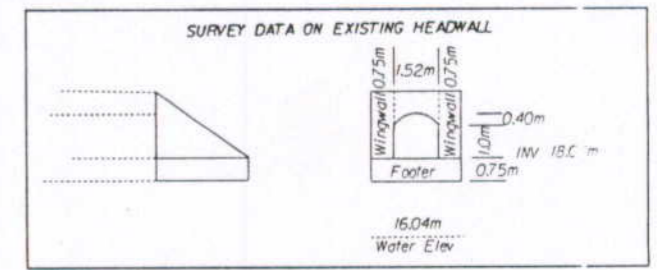
SHNI CORPORATION
 DB470 PG674
 PBI0 PG342
 14.50 AC

WILLIAM F. MERSHON & KATHRYN M. ANSWORTH
 SUBSTITUTE TRUSTEES UNDER THE MERSHON LAND TRUST AGREEMENT
 DB 905 PG 424
 PG 6 PG 87
 PG 11 PG 87
 PG 15 PG 87
 PG 17 PG 87
 69.75 AC

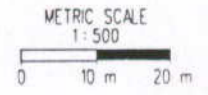
CONST. CL.
 • 5'18" 23.40' RT
 R • 1749.909 m
 T • 81.093 m
 L • 162.069 m
 PC • 59-37.937
 PI • 60-19.029
 PT • 61-00.006
 LS • 60 m
 E • 0.030
 V • 100 km/h

5-4
 4m - 750mm CONC. PIPE RECD.
 INV. IN (19.56) IN. (19.56)
 (HEIGHT OF COVER 1.445m)
 1- FLARED END SECTION RECD.
 ST. D. LES. INV. (19.56)
 7.56m - TONS EC-1 CLASS 1 RECD.

POC 62-0748 RTE. 603
 P1.500+53.31 DITCH TRAW. LT.
 Δ 10745'16" U
 62-11.06 Rte 603
 500+00.00 Ditch Traw U
 Δ 10745'16" U



FIGURES IN BRACKETS AND DOT - DASHED LINES DENOTE PERMANENT EASEMENTS.



02/26/97 08:45:04