

HAMPTON ROADS DISTRICT DESIGN UNIT

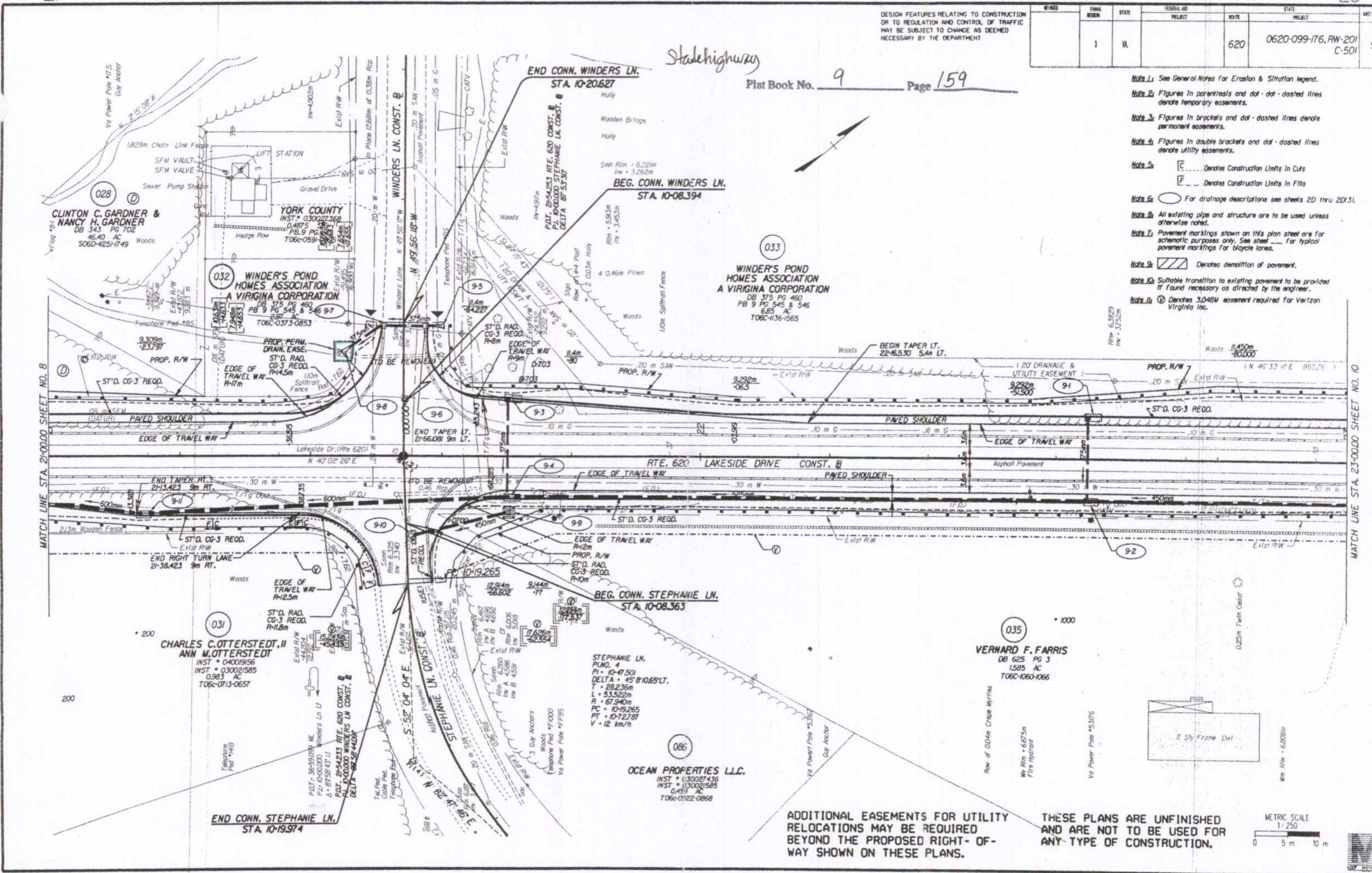
DESIGN FEATURES RELATING TO CONSTRUCTION OR TO REGULATION AND CONTROL OF TRAFFIC MAY BE SUBJECT TO CHANGE AS DEEMED NECESSARY BY THE DEPARTMENT

REVISED	FINAL DESIGN	STATE	FEDERAL AID PROJECT	ROUTE	STATE PROJECT	SHEET NO.
		VA		620	0620-099-176, RW-201 C-501	9

Plat Book No. 9 Page 159

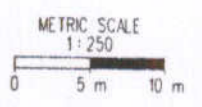


- Note 1: See General Notes for Erosion & Sloitation legend.
- Note 2: Figures in parenthesis and dot-dot-dashed lines denote temporary easements.
- Note 3: Figures in brackets and dot-dashed lines denote permanent easements.
- Note 4: Figures in double brackets and dot-dashed lines denote utility easements.
- Note 5: [C] Denotes Construction Limits in Cuts
[E] Denotes Construction Limits in Fills
- Note 6: [Symbol] For drainage descriptions see sheets 2D thru 2D/3.
- Note 7: All existing pipe and structure are to be used unless otherwise noted.
- Note 8: Pavement markings shown on this plan sheet are for schematic purposes only. See sheet [] for typical pavement markings for bicycle lanes.
- Note 9: [Symbol] Denotes demolition of pavement.
- Note 10: Suitable transition to existing pavement to be provided if found necessary as directed by the engineer.
- Note 11: [Symbol] Denotes 3.048m easement required for Verizon Virginia Inc.



ADDITIONAL EASEMENTS FOR UTILITY RELOCATIONS MAY BE REQUIRED BEYOND THE PROPOSED RIGHT-OF-WAY SHOWN ON THESE PLANS.

THESE PLANS ARE UNFINISHED AND ARE NOT TO BE USED FOR ANY TYPE OF CONSTRUCTION.



SURVEYED BY - J.A. & HARRIS, 07/27/2005 0652
SUPERVISED BY - CHERYL STANLINS, 07/27/2005 2635
DESIGNED BY - LEE CULBERTSON, 07/27/2005 3500
CADD OPERATOR - CULBERTSON, 07/27/2005 4005
REVISED BY -

2/4/2005 12:03:33

