

474 ACRES

FLAT  
as a part of  
"SHADY BANKS"  
York Co., Va.

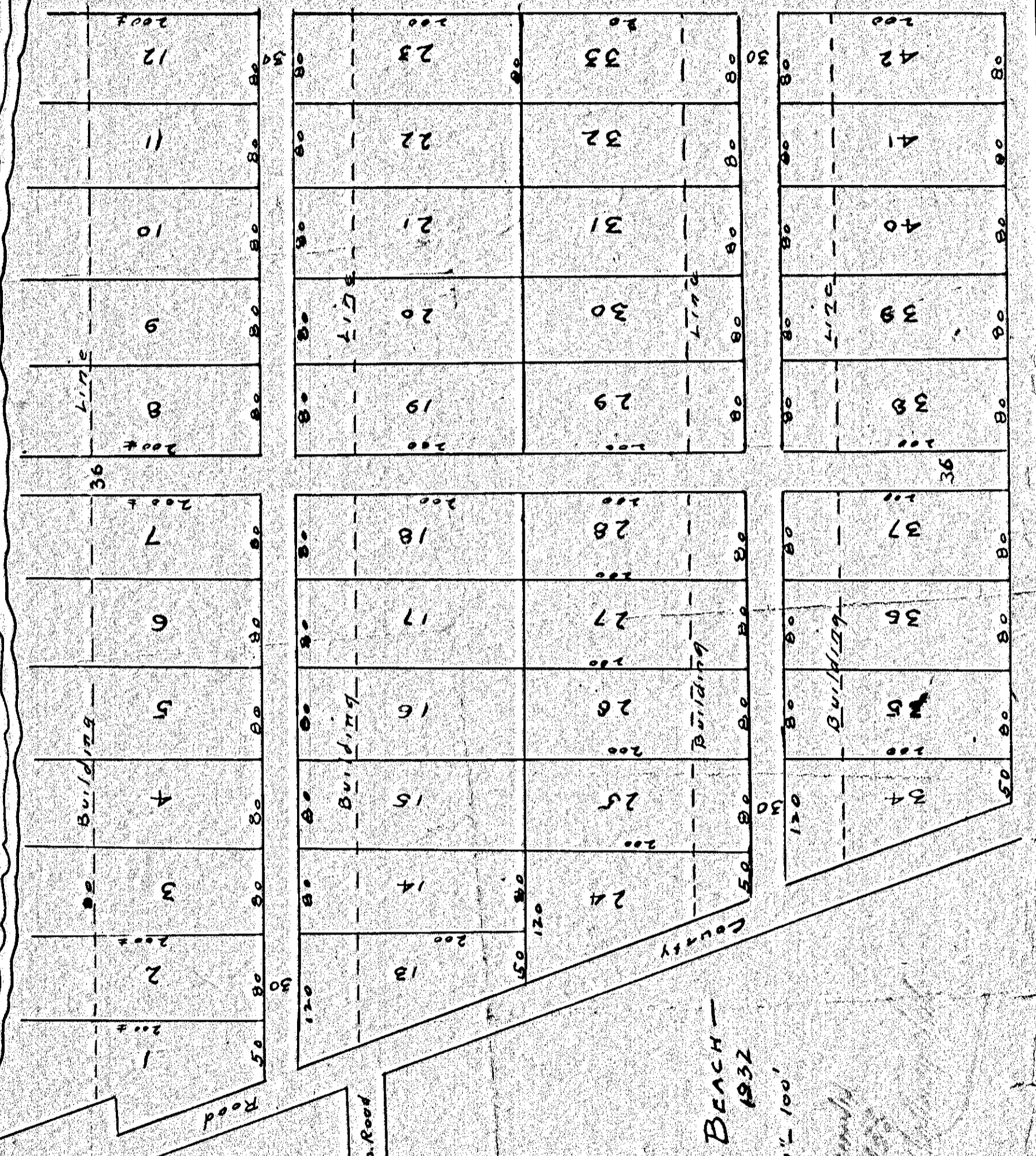
Survey By *Henry E. Saunders*  
Date: October 15, 1931

*Filed & recorded  
June 2, 1932  
Henry E. Saunders*

Scale 1"=100'

47

BACK CREEK



BERKELEY-BEACH  
1932  
MAY  
Scale 1"=100'

*Henry E. Saunders*