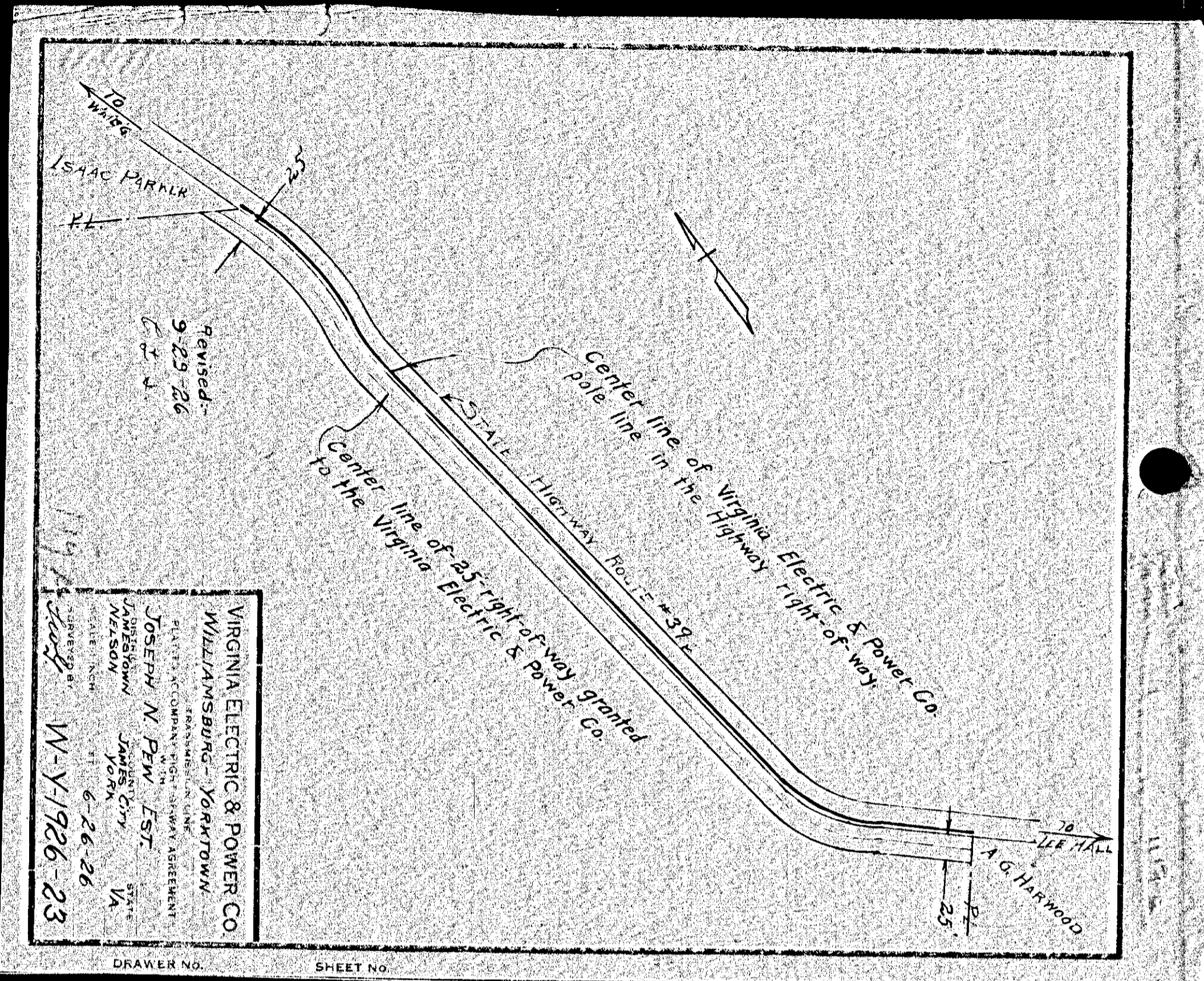


VIRGINIA ELECTRIC & POWER CO.
 Williamsburg - Yorktown

PLAT TO ACCOMPANY RIGHT-OF-WAY AGREEMENT
 TRANSMISSION LINE
 WITH
 BETTY DIGGS.
 DISTRICT: YORK
 COUNTY: YORK
 STATE: VA.
 SUBMITTED BY: Dec 19, 1926
 SCALE: 1 INCH = 40 FT.
 DRAWER NO. W-1-127A

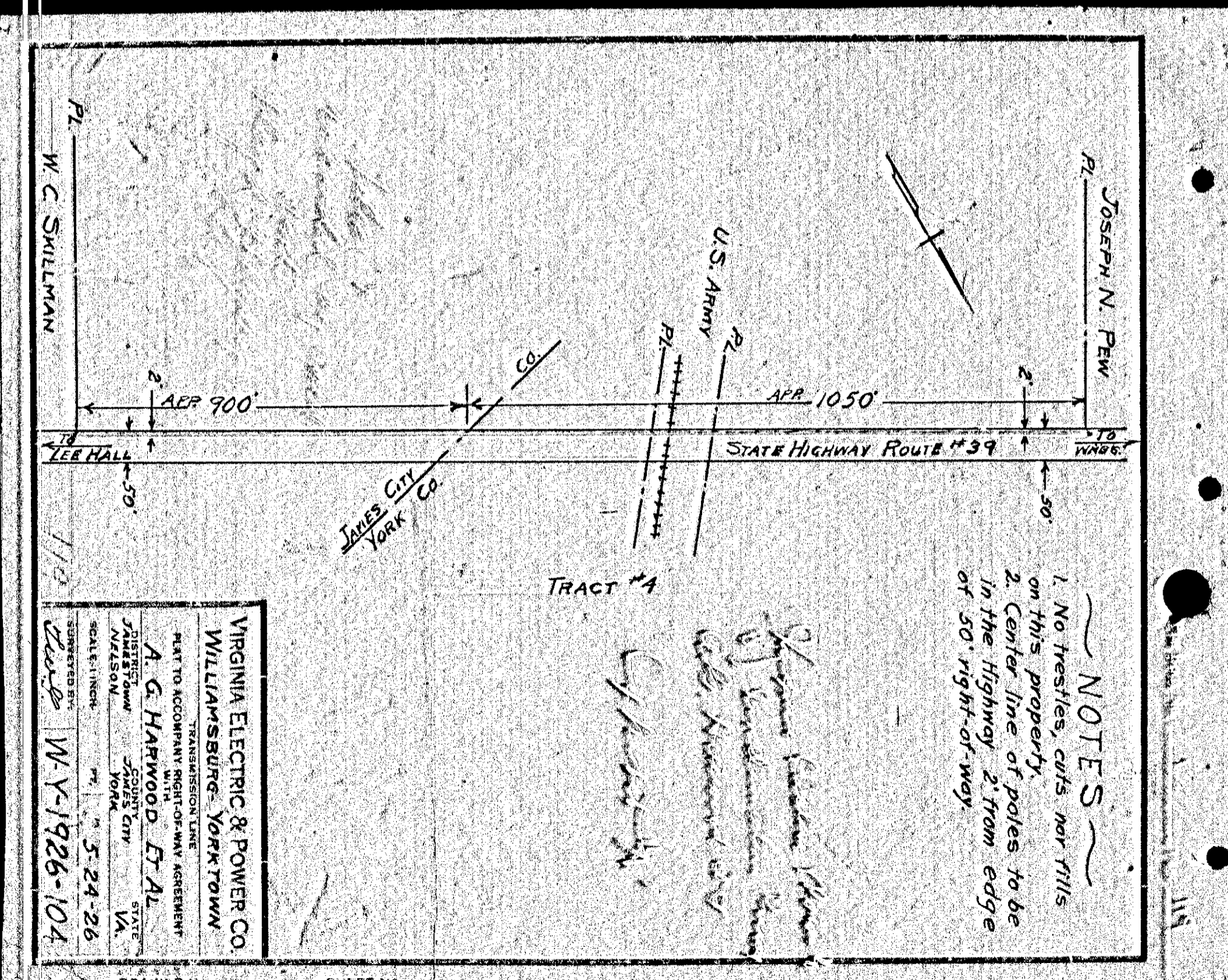
118



VIRGINIA ELECTRIC & POWER CO.
 WILLIAMSBURG - YORKTOWN

PLAT TO ACCOMPANY RIGHT-OF-WAY AGREEMENT
 TRANSMISSION LINE
 WITH
 JOSEPH N. PEW, EST.
 DISTRICT: JAMES CITY
 COUNTY: YORK
 STATE: VA.
 SUBMITTED BY: 6-26-26
 SCALE: 1 INCH = 40 FT.
 DRAWER NO. W-Y-1926-23

117A



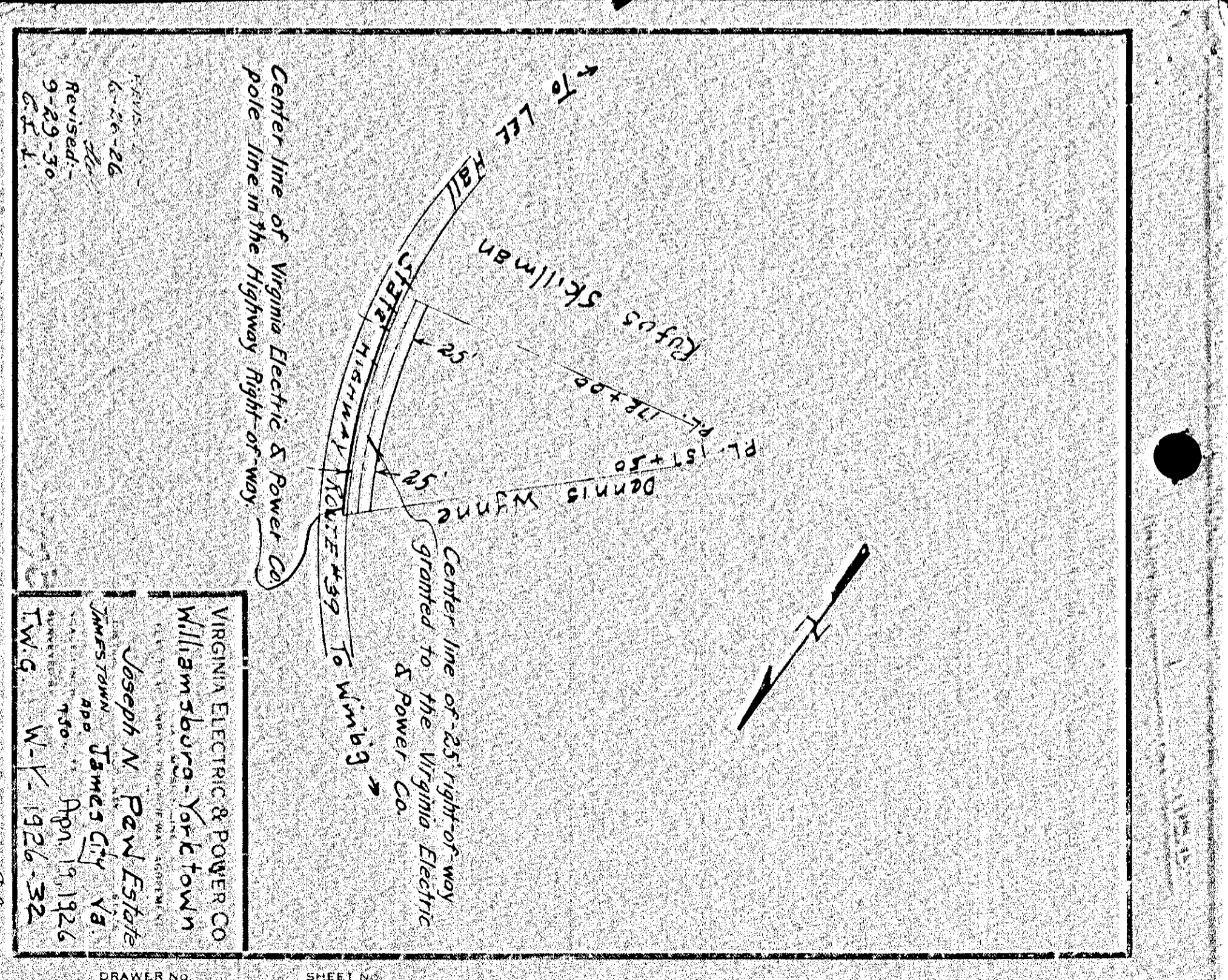
VIRGINIA ELECTRIC & POWER CO.
 WILLIAMSBURG - YORKTOWN

PLAT TO ACCOMPANY RIGHT-OF-WAY AGREEMENT
 TRANSMISSION LINE
 WITH
 A. G. HARWOOD, ET AL
 DISTRICT: JAMES CITY
 COUNTY: YORK
 STATE: VA.
 SUBMITTED BY: 5-24-26
 SCALE: 1 INCH = 40 FT.
 DRAWER NO. W-Y-1926-104

NOTES

1. No fences, cuts nor fills on this property.
2. Center line of poles to be in the Highway 2' from edge of 50' right-of-way.

119



VIRGINIA ELECTRIC & POWER CO.
 WILLIAMSBURG - YORKTOWN

PLAT TO ACCOMPANY RIGHT-OF-WAY AGREEMENT
 TRANSMISSION LINE
 WITH
 Joseph N. Pew Estate
 DISTRICT: JAMES CITY
 COUNTY: YORK
 STATE: VA.
 SUBMITTED BY: Apr 19, 1926
 SCALE: 1 INCH = 40 FT.
 DRAWER NO. W-Y-1926-32

112B