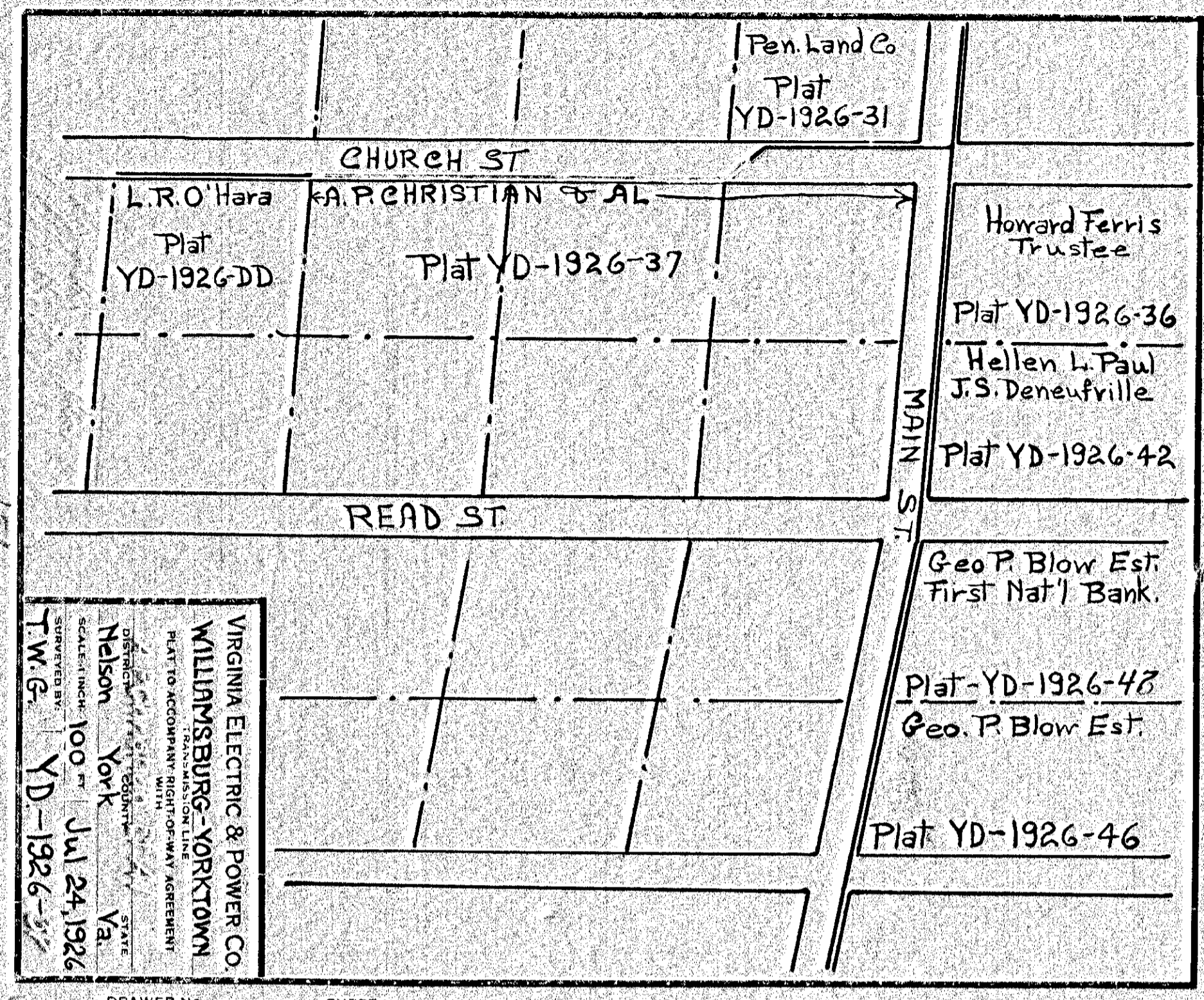


VIRGINIA ELECTRIC & POWER CO.  
 WILLIAMSBURG-YORKTOWN  
 DISTRICT ENGINEERING DEPT.  
 DRAWN BY: David Washington  
 CHECKED BY: Nelson York  
 SCALE: 1" = 50'  
 DATE: 4-19-26  
 SURVEYED BY: T.W.G.  
 YEAR: 1926-83

158

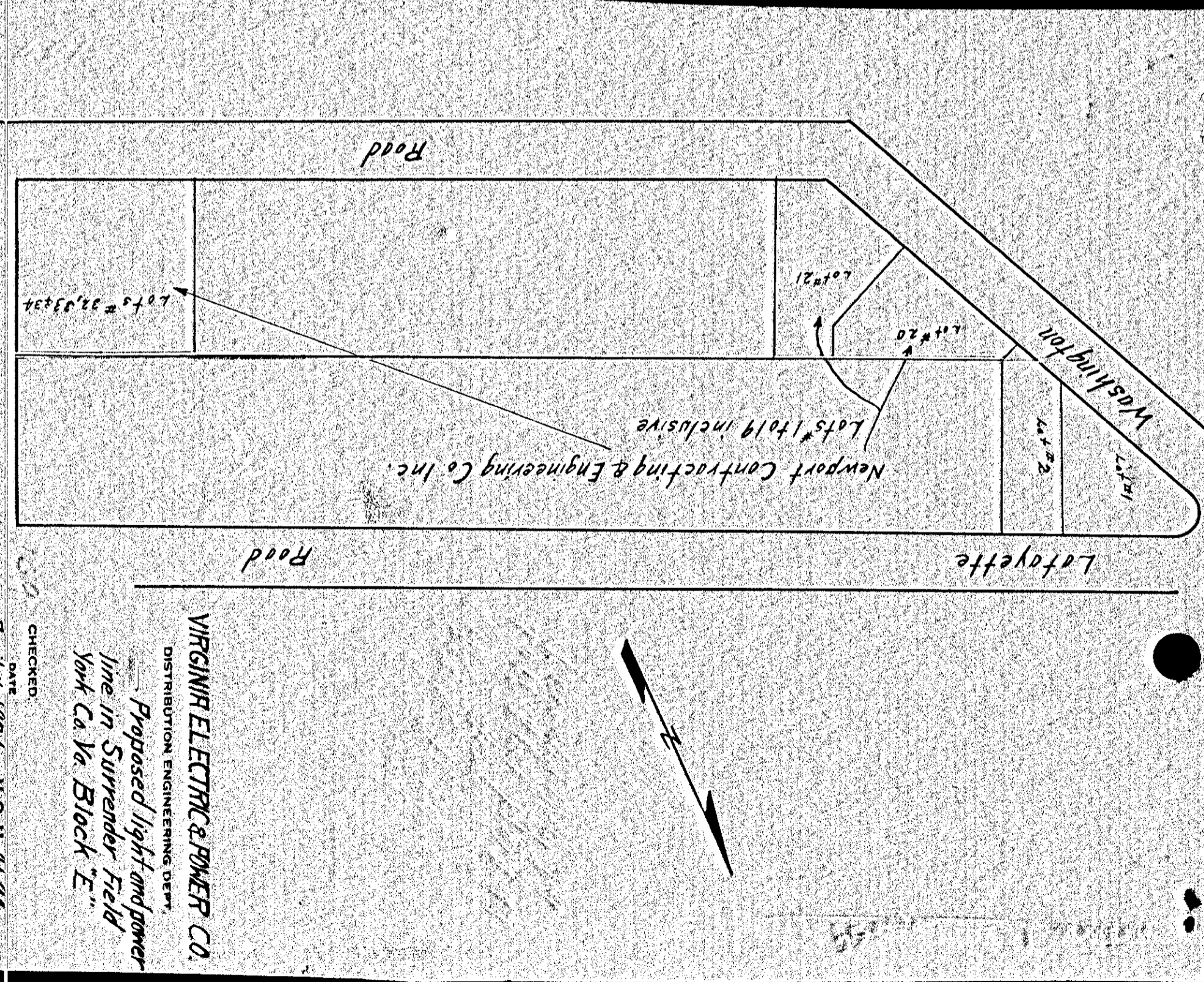
156



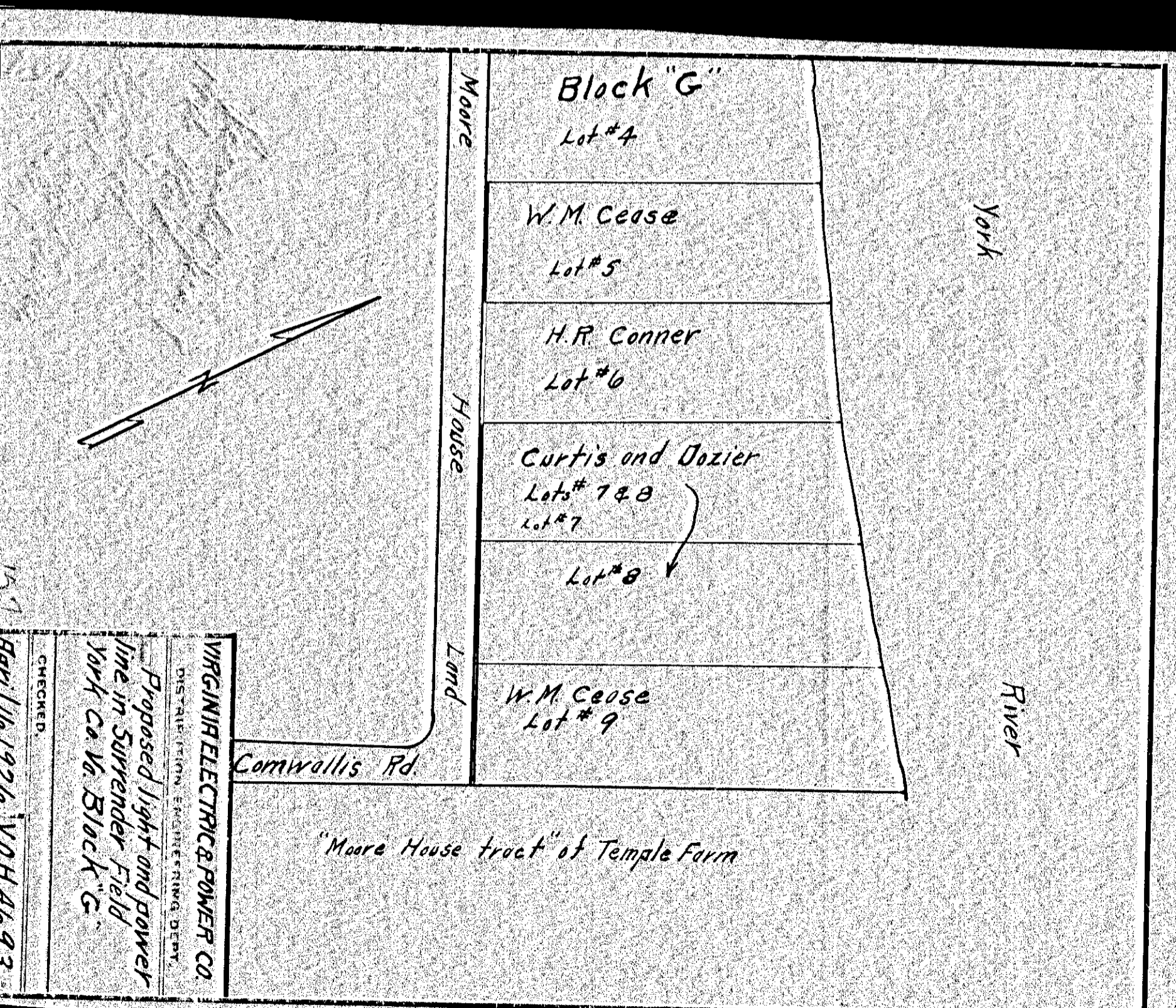
VIRGINIA ELECTRIC & POWER CO.  
 WILLIAMSBURG-YORKTOWN  
 DISTRICT ENGINEERING DEPT.  
 DRAWN BY: Nelson York  
 CHECKED BY: T.W.G.  
 SCALE: 1" = 100'  
 DATE: Jul 24, 1926  
 SURVEYED BY: T.W.G.  
 YEAR: 1926-83

159

157



VIRGINIA ELECTRIC & POWER CO.  
 DISTRIBUTION ENGINEERING DEPT.  
 Proposed light and power  
 line in Surrender Field  
 York Co. Va. Block "E"  
 DRAWN BY: David Washington  
 CHECKED BY: Nelson York  
 DATE: 1-16-1926  
 YEAR: 1926-83



VIRGINIA ELECTRIC & POWER CO.  
 DISTRICT ENGINEERING DEPT.  
 Proposed light and power  
 line in Surrender Field  
 York Co. Va. Block "G"  
 DRAWN BY: Nelson York  
 CHECKED BY: T.W.G.  
 DATE: 1-16-1926  
 YEAR: 1926-83