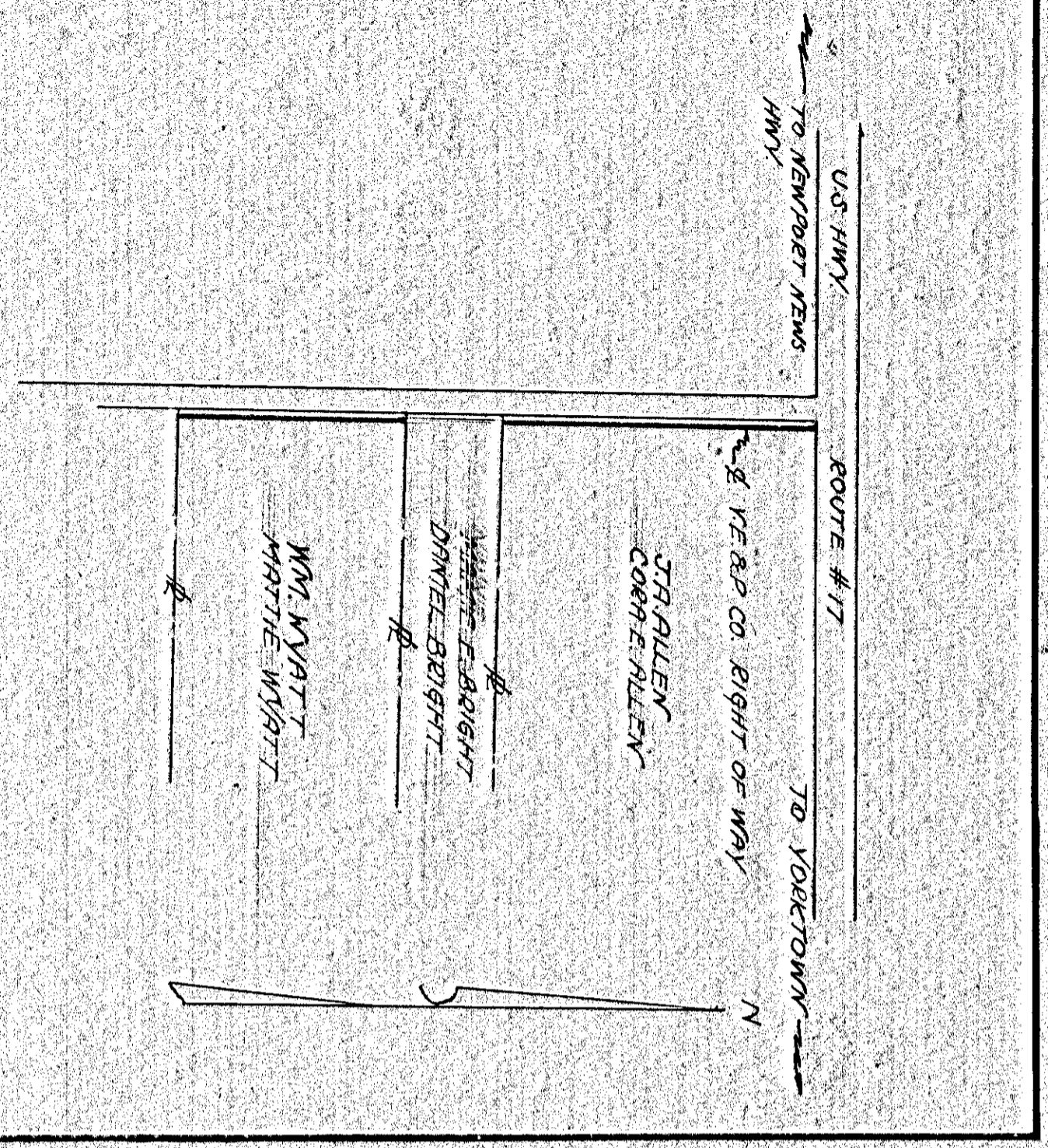


VIRGINIA ELECTRIC & POWER CO.
YORKTOWN DISTRIBUTION
TRANSMISSION LINE
PLAT TO ACCOMPANY RIGHT-OF-WAY AGREEMENT
SAM REMSTROUS & YORK CO. SCHOOL BOARD
DISTRICT YORK
STATE VIRGINIA
SCALE: 1 INCH = 100 FT.
NOV. 7, 1933
SURVEYED BY THOMAS WMSBG #1067

DRAWER No. SHEET No.

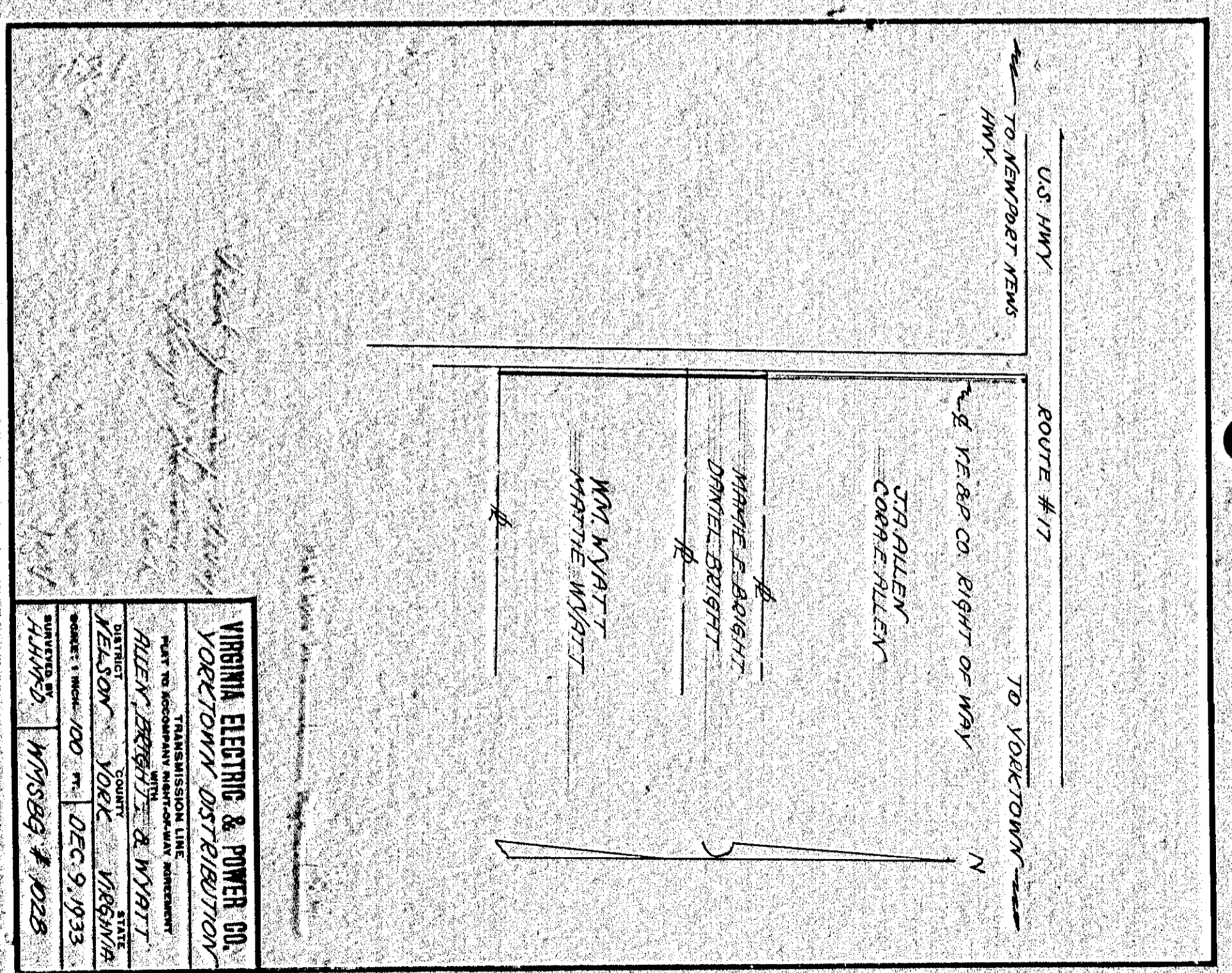
183



VIRGINIA ELECTRIC & POWER CO.
YORKTOWN DISTRIBUTION
TRANSMISSION LINE
PLAT TO ACCOMPANY RIGHT-OF-WAY AGREEMENT
ALEX. BERTRAM & WYATT
DISTRICT YORK
STATE VIRGINIA
SCALE: 1 INCH = 100 FT.
DEC. 9, 1933
SURVEYED BY THOMAS WMSBG #1028

DRAWER No. SHEET No.

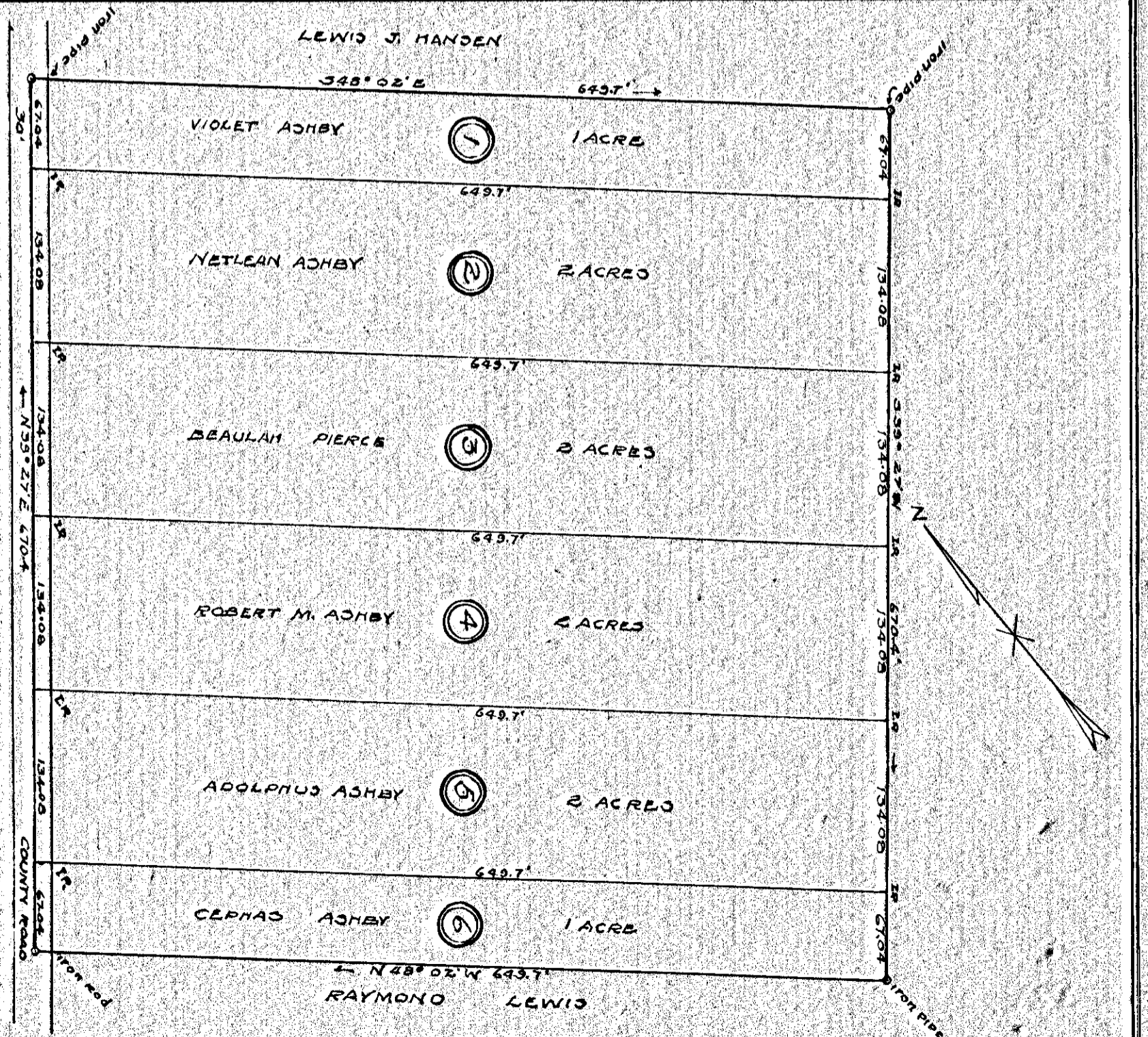
185



VIRGINIA ELECTRIC & POWER CO.
YORKTOWN DISTRIBUTION
TRANSMISSION LINE
PLAT TO ACCOMPANY RIGHT-OF-WAY AGREEMENT
ALEX. BERTRAM & WYATT
DISTRICT YORK
STATE VIRGINIA
SCALE: 1 INCH = 100 FT.
DEC. 9, 1933
SURVEYED BY THOMAS WMSBG #1028

DRAWER No. SHEET No.

184 1867



PLAT SHOWING SUBDIVISION
OF THE
WILLIAM ASHBY ESTATE
BEING
LOT NO. 5-7 OF THE FORT MAGRUDER
SUBDIVISION YORK COUNTY VIRGINIA
SUBMITTED 1933-1934
BY W. O. MCNEAVES

DRAWER No. SHEET No.