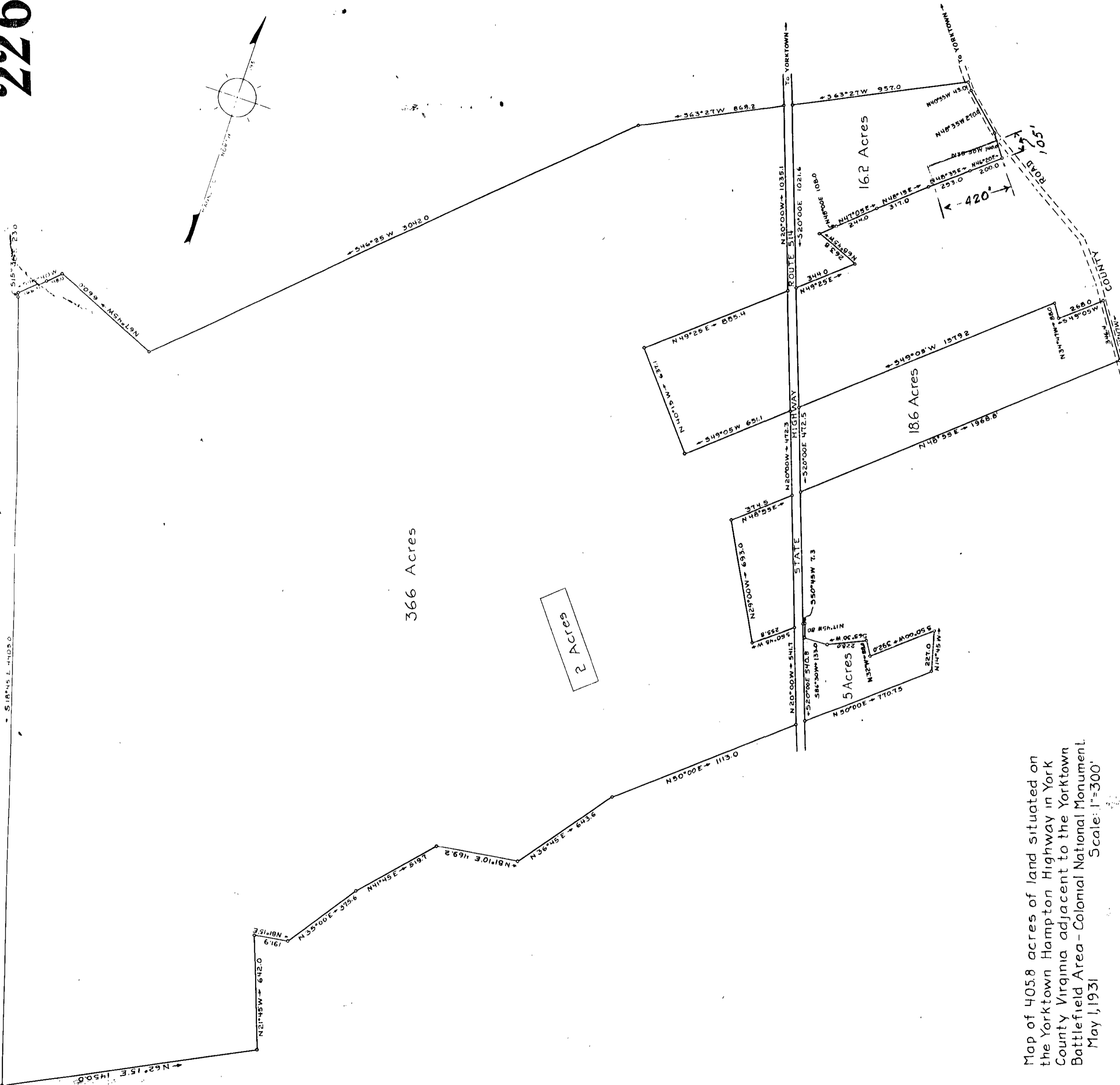


226



FBP
181

Map of 405.8 acres of land situated on the Yorktown Hampton Highway in York County Virginia adjacent to the Yorktown Battlefield Area - Colonial National Monument. May 1, 1931 Scale: 1"=300'

Mat 8002 No. 1 Page 226

J Temple Waddill, Inc.
Certified Civil Engineers
1500 North Main St.
Richmond-Virginia

Page 226

95 A 1931
181
181