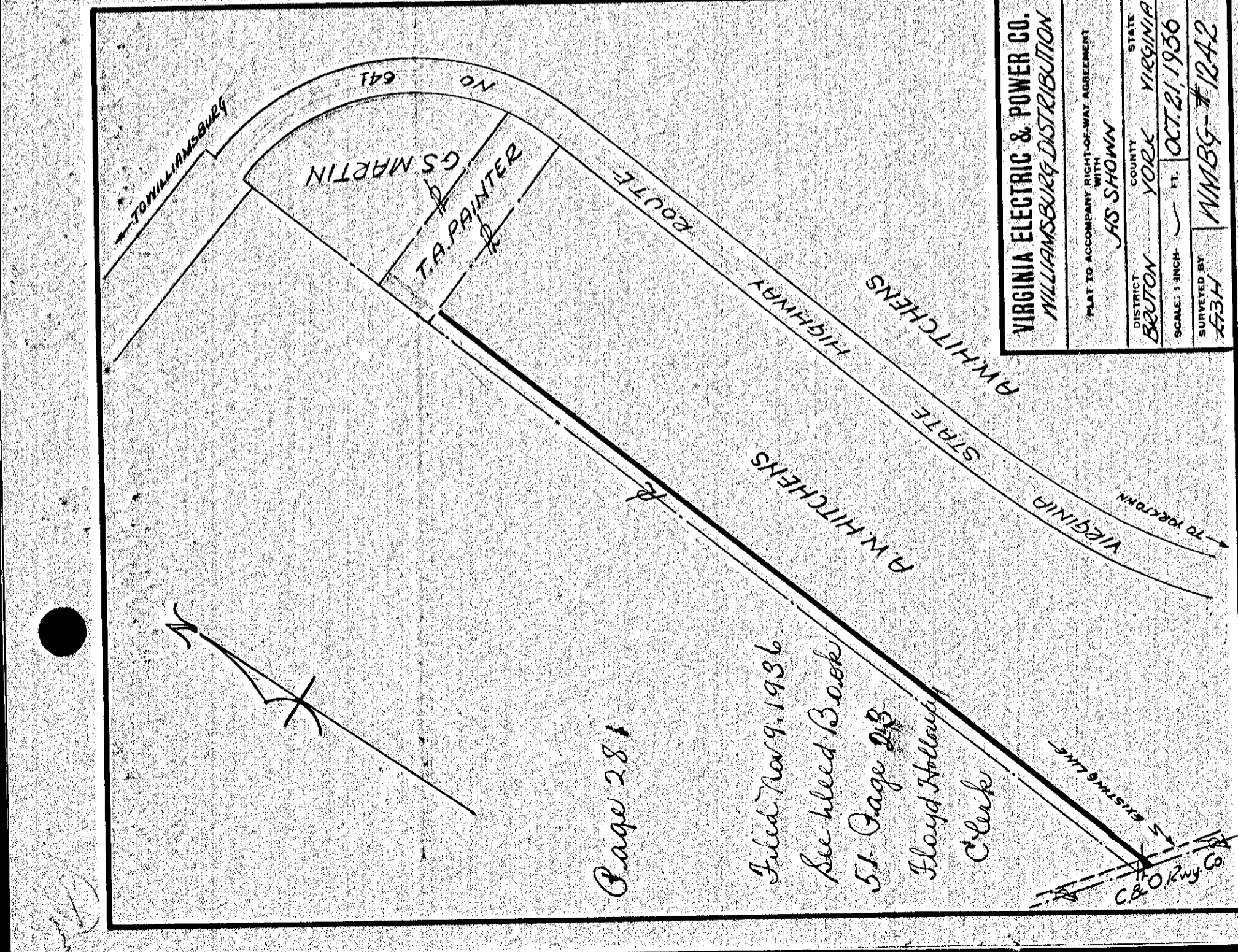


VIRGINIA ELECTRIC & POWER CO.
WILLIAMSBURG DISTRIBUTION
TRANSMISSION LINE
PLAT TO ACCOMPANY RIGHT-OF-WAY AGREEMENT
AS SHOWN

DISTRICT YORK COUNTY VIRGINIA
SUBMITTED BY
SCALE: 1 INCH = 100 FT.
DATE: JULY 11, 1936
DRAWN BY WMBG-1204

Filed Nov 9, 1936
See bleed Book 51
Page 19
Floyd Holloway
Clerk

279

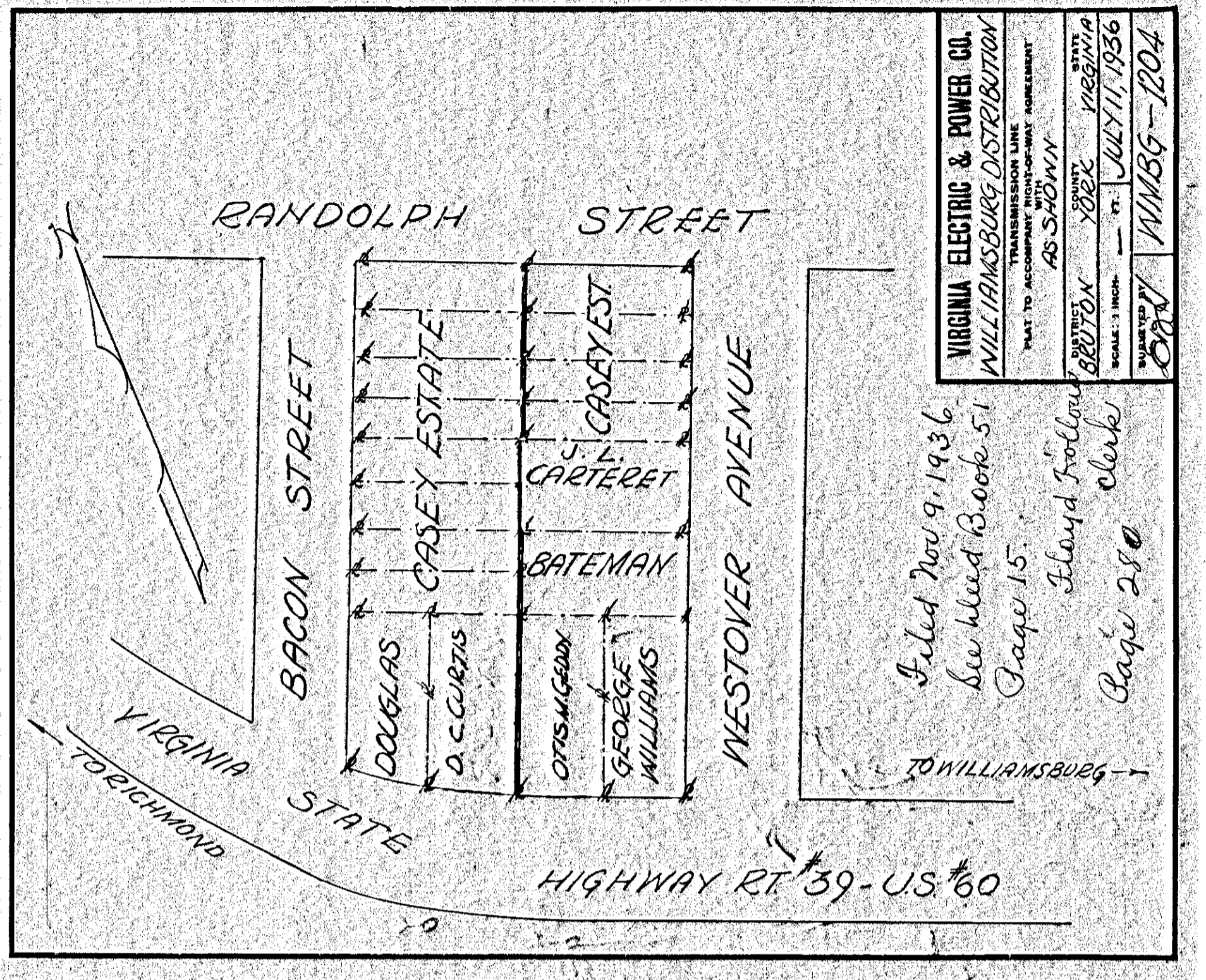


VIRGINIA ELECTRIC & POWER CO.
WILLIAMSBURG DISTRIBUTION
TRANSMISSION LINE
PLAT TO ACCOMPANY RIGHT-OF-WAY AGREEMENT
AS SHOWN

DISTRICT YORK COUNTY VIRGINIA
SUBMITTED BY
SCALE: 1 INCH = 100 FT.
DATE: OCT. 21, 1936
DRAWN BY WMBG-1242

Filed Nov 9, 1936
See bleed Book 51
Page 28
Floyd Holloway
Clerk

281

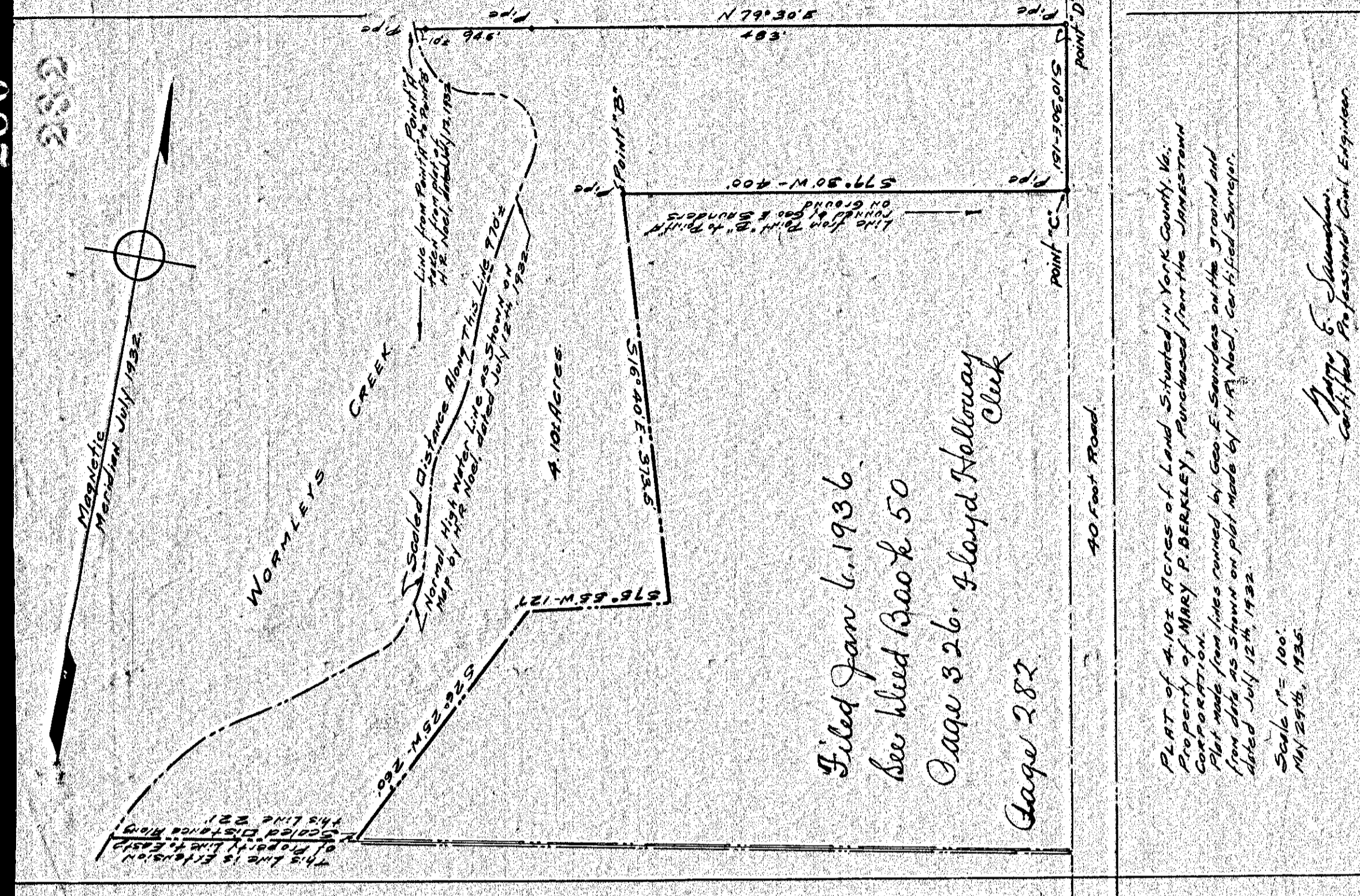


VIRGINIA ELECTRIC & POWER CO.
WILLIAMSBURG DISTRIBUTION
TRANSMISSION LINE
PLAT TO ACCOMPANY RIGHT-OF-WAY AGREEMENT
AS SHOWN

DISTRICT YORK COUNTY VIRGINIA
SUBMITTED BY
SCALE: 1 INCH = 100 FT.
DATE: JULY 11, 1936
DRAWN BY WMBG-1204

Filed Nov 9, 1936
See bleed Book 51
Page 15
Floyd Holloway
Clerk

280



Filed Jan 6, 1936
See bleed Book 50
Page 26
Floyd Holloway
Clerk

PLAT OF 4.102 ACRES OF LAND SITUATED IN YORK COUNTY, VA.
PROPERTY OF MARY P. BERLEY, PURCHASED FROM THE JAMESSTOWN
CORPORATION.
PLAT MADE FROM LINES RUN BY GEO. F. SANDERS ON THE GROUND AND
FROM DATA AS SHOWN ON PLAT MADE BY H. A. NEAL, CERTIFIED SURVEYOR,
DATED JULY 12th, 1932.
Scale 1" = 100'
May 29th, 1936

G. F. SANDERS
Certified Professional Civil Engineer

282