

Filed Nov. 9, 1936
 See Wiled Book
 51, Page 14
 Floyd Holloway
 Clerk

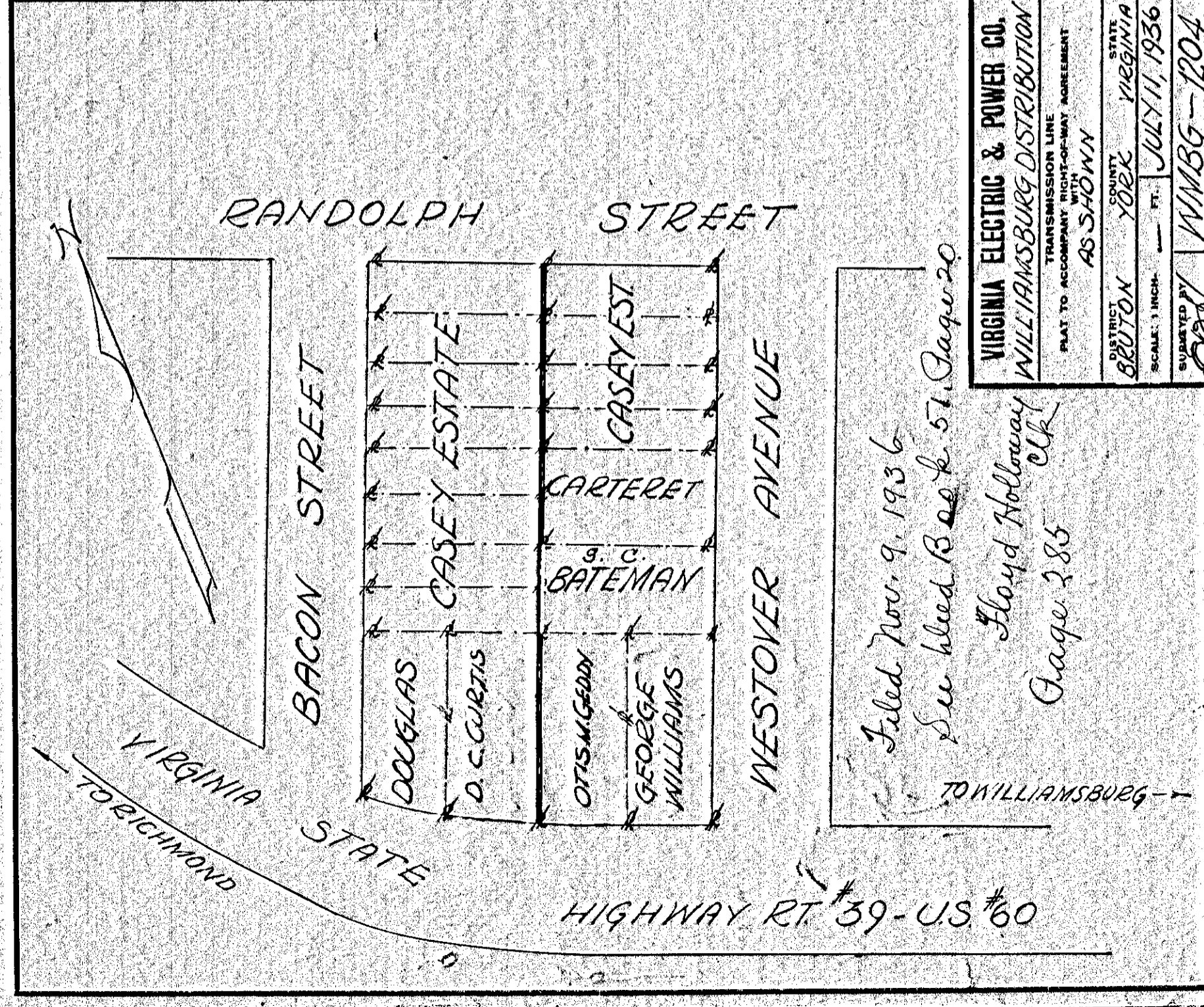
Page 283

VIRGINIA ELECTRIC & POWER CO.
 WILLIAMSBURG DISTRIBUTION
 TRANSMISSION LINE
 PLAT TO ACCOMPANY RIGHT-OF-WAY AGREEMENT
 WITH
 J.S. SHOWN
 DISTRICT BRUTON COUNTY YORK STATE VIRGINIA
 SCALE: 1 INCH = 100 FT. OCT. 21, 1936
 SURVEYED BY E.B.H. NMBG-#1242

DRAWER NO. SHEET NO.

283

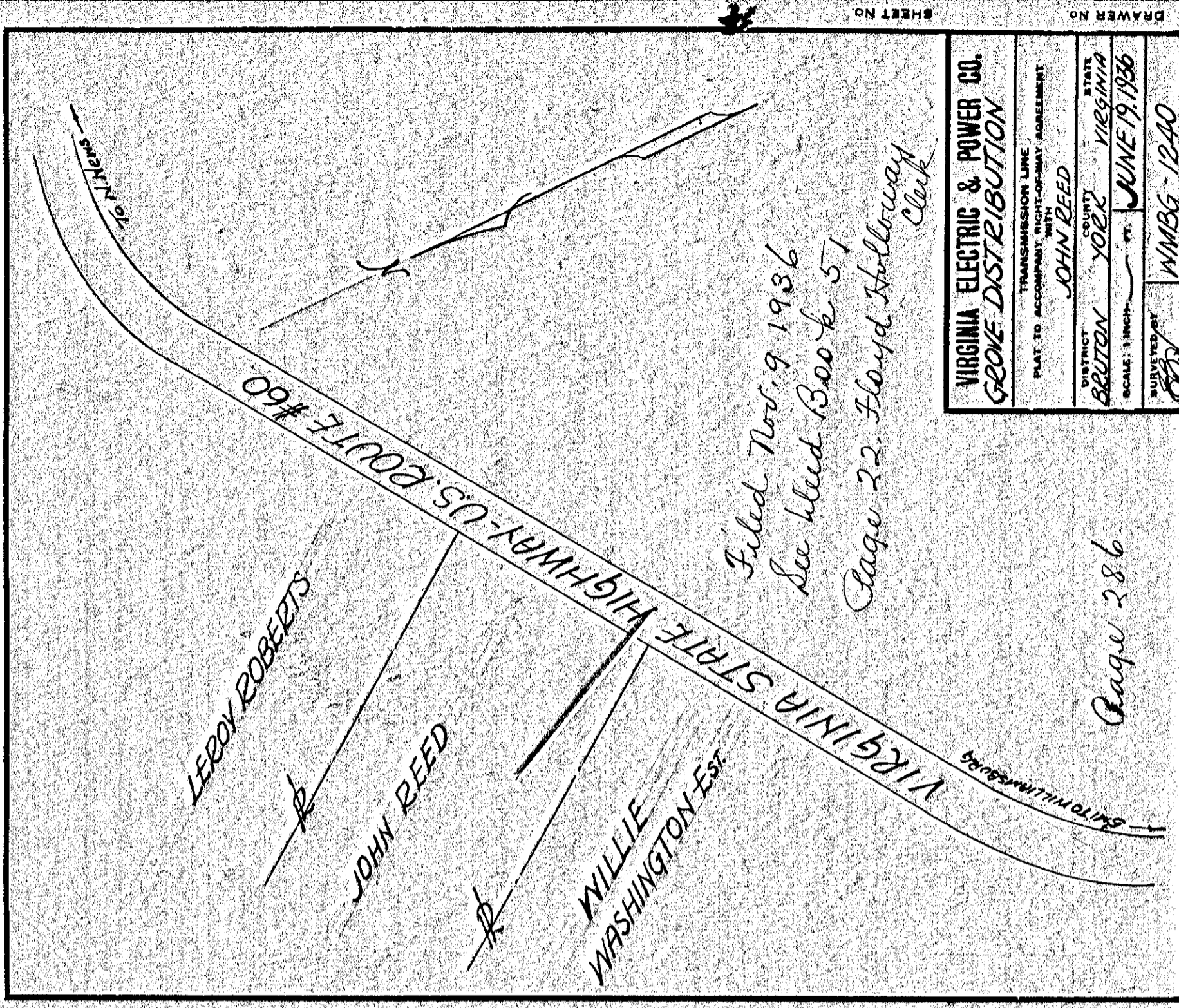
285



Filed Nov. 9, 1936
 See Wiled Book p. 57, Page 20
 Floyd Holloway
 Clerk
 Page 285

VIRGINIA ELECTRIC & POWER CO.
 WILLIAMSBURG DISTRIBUTION
 TRANSMISSION LINE
 PLAT TO ACCOMPANY RIGHT-OF-WAY AGREEMENT
 WITH
 AS SHOWN
 DISTRICT BRUTON COUNTY YORK STATE VIRGINIA
 SCALE: 1 INCH = 100 FT. JULY 11, 1936
 SURVEYED BY E.B.H. NMBG-1204

DRAWER NO. SHEET NO.



Filed Nov. 9, 1936
 See Wiled Book p. 57
 Page 22, Floyd Holloway
 Clerk

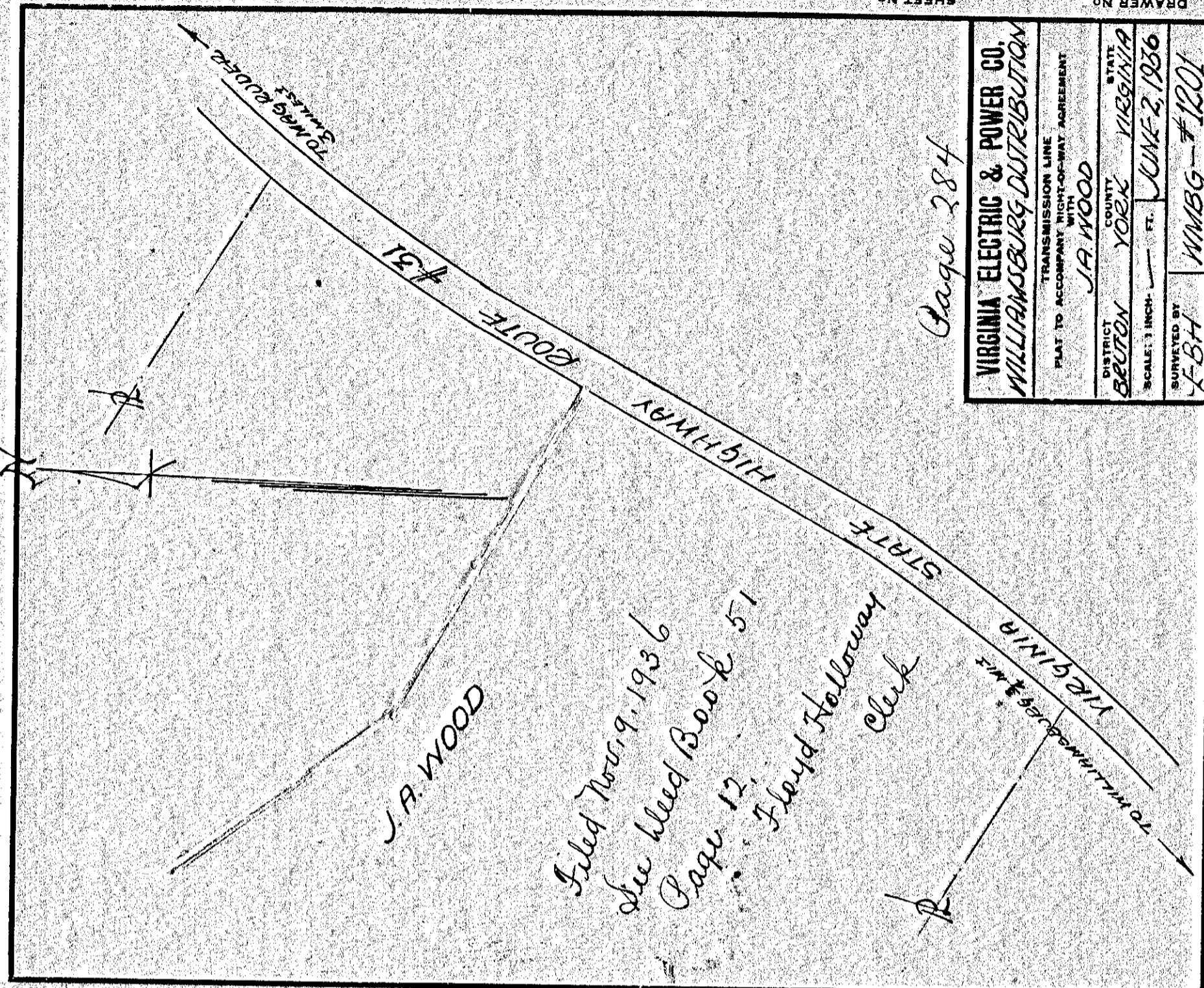
Page 286

VIRGINIA ELECTRIC & POWER CO.
 GROVE DISTRIBUTION
 TRANSMISSION LINE
 PLAT TO ACCOMPANY RIGHT-OF-WAY AGREEMENT
 WITH
 JOHN REED
 DISTRICT BRUTON COUNTY YORK STATE VIRGINIA
 SCALE: 1 INCH = 100 FT. JUNE 19, 1936
 SURVEYED BY E.B.H. NMBG-1240

DRAWER NO. SHEET NO.

284

286



Filed Nov. 9, 1936
 See Wiled Book p. 51
 Page 12
 Floyd Holloway
 Clerk

Page 284

VIRGINIA ELECTRIC & POWER CO.
 WILLIAMSBURG DISTRIBUTION
 TRANSMISSION LINE
 PLAT TO ACCOMPANY RIGHT-OF-WAY AGREEMENT
 WITH
 J.A. WOOD
 DISTRICT BRUTON COUNTY YORK STATE VIRGINIA
 SCALE: 1 INCH = 100 FT. JUNE 2, 1936
 SURVEYED BY E.B.H. NMBG-#1201

DRAWER NO. SHEET NO.