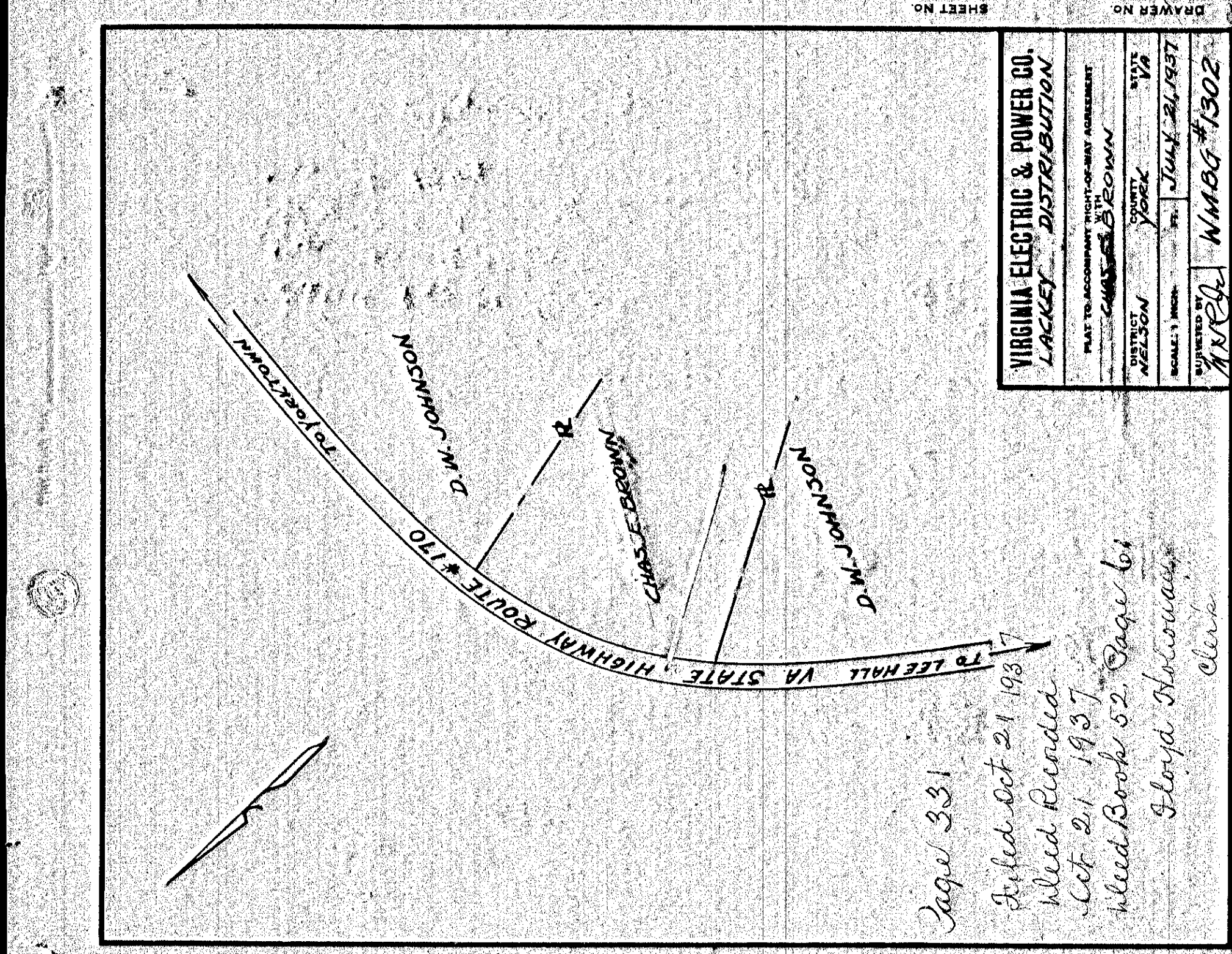
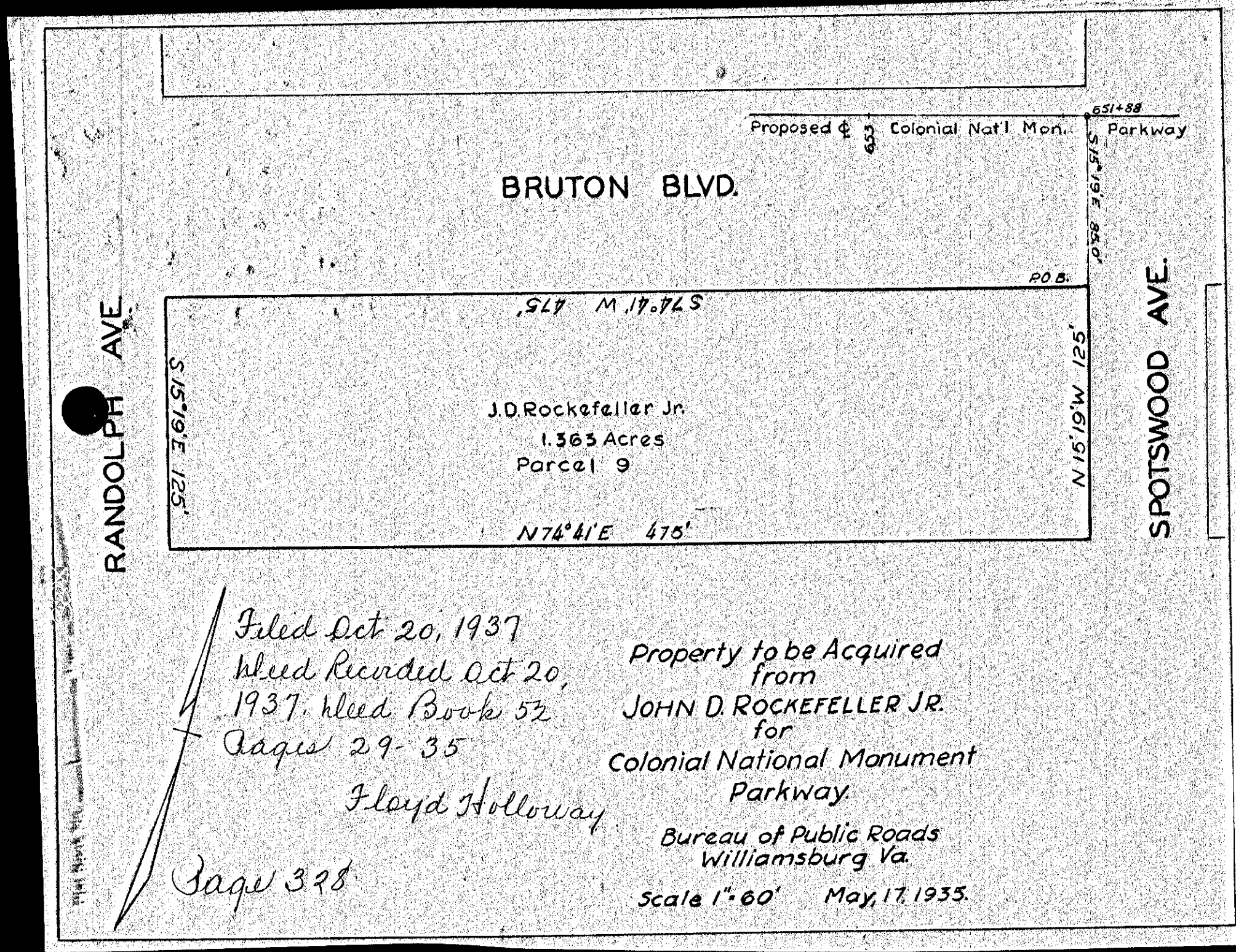


329

381

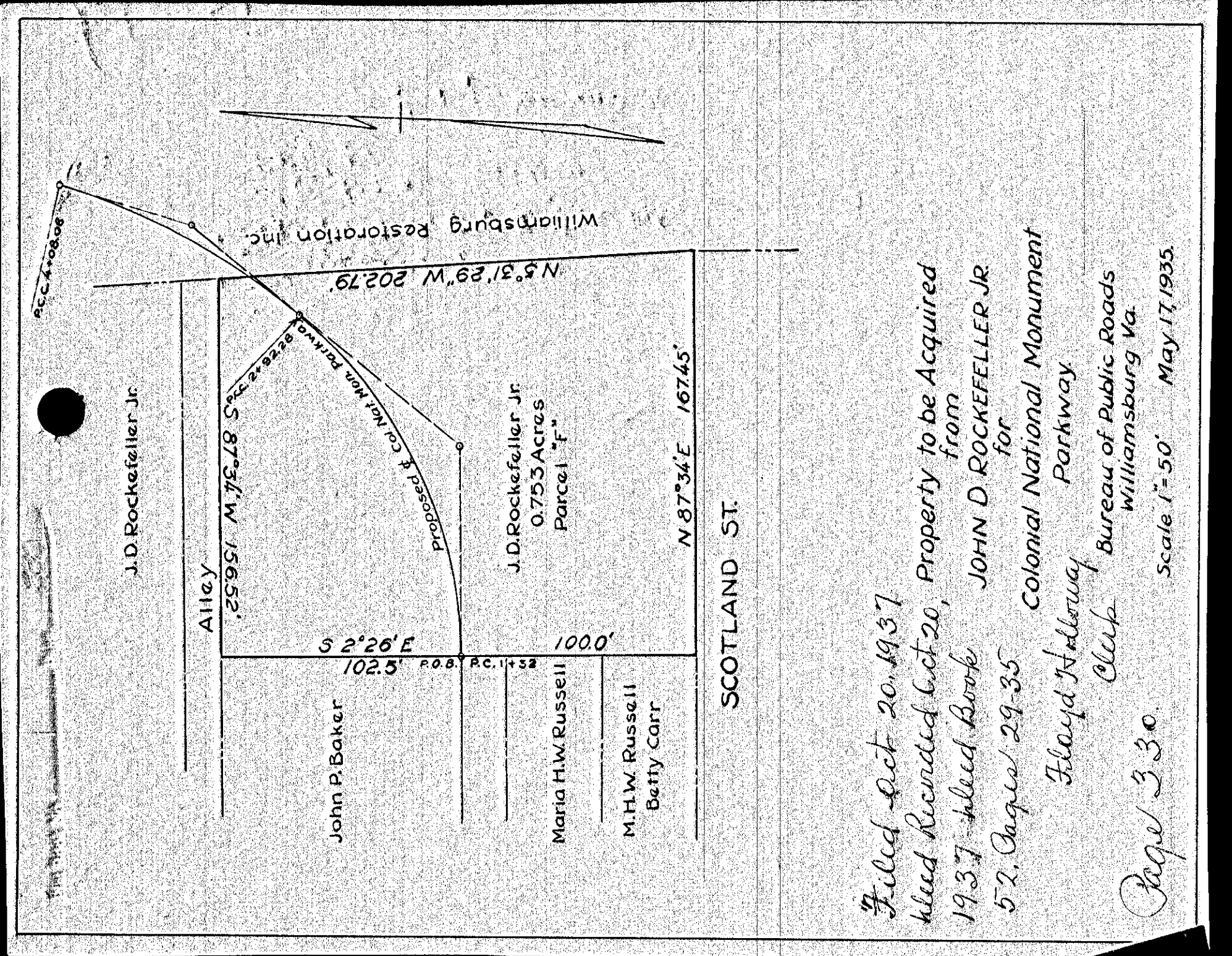


DRAWER NO.		SHEET NO.	
VIRGINIA ELECTRIC & POWER CO. LACKY DISTRIBUTION			
PLAT TO ACCOMPANY EASEMENT AGREEMENT			
DATE	BY	SCALE	DATE
APR 23 1937	W. J. BROWN	1" = 50'	JULY 21 1937
APR 23 1937	W. J. BROWN	1" = 50'	JULY 21 1937
DRAWN BY		CHECKED BY	
W. J. BROWN		W. J. BROWN	
SUBMITTED BY NMBG #1302			



328

380



Filed Oct 20, 1937
 Wled Recorded Oct 20, 1937
 Wled Book 52
 Pages 29-35
 Floyd Holloway
 Property to be Acquired from
 JOHN D. ROCKEFELLER JR.
 for
 Colonial National Monument
 Parkway
 Bureau of Public Roads
 Williamsburg Va.
 Scale 1" = 50' May 17, 1935

Page 330