

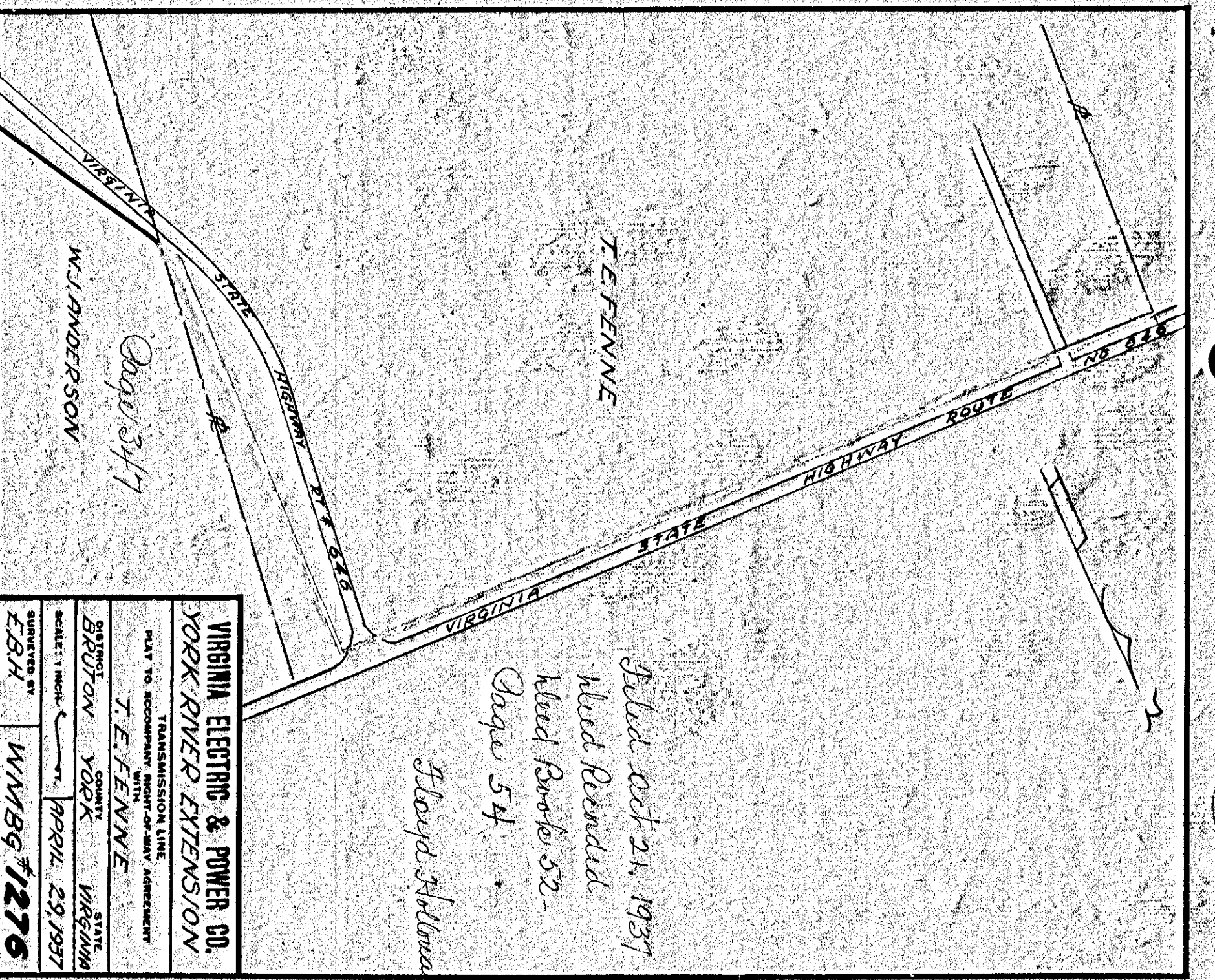
FILED Oct 21, 1937
 Book 52, Page 48
 Lloyd Shilman Clerk

VIRGINIA ELECTRIC & POWER CO. YORK RIVER EXTENSION	
TRANSMISSION LINE PLAT TO ACCOMPANY RIGHT-OF-WAY AGREEMENT	
DISTRICT BRUTON	COUNTY YORK
DISTRICT POWERS & SHEPPARD	COUNTY YORK
SCALE: 1 INCH = 40 FT.	DATE: APR 19 1937
SUBMITTED BY EBA	WMBG #1266

DRAWER No. SHEET No.

347

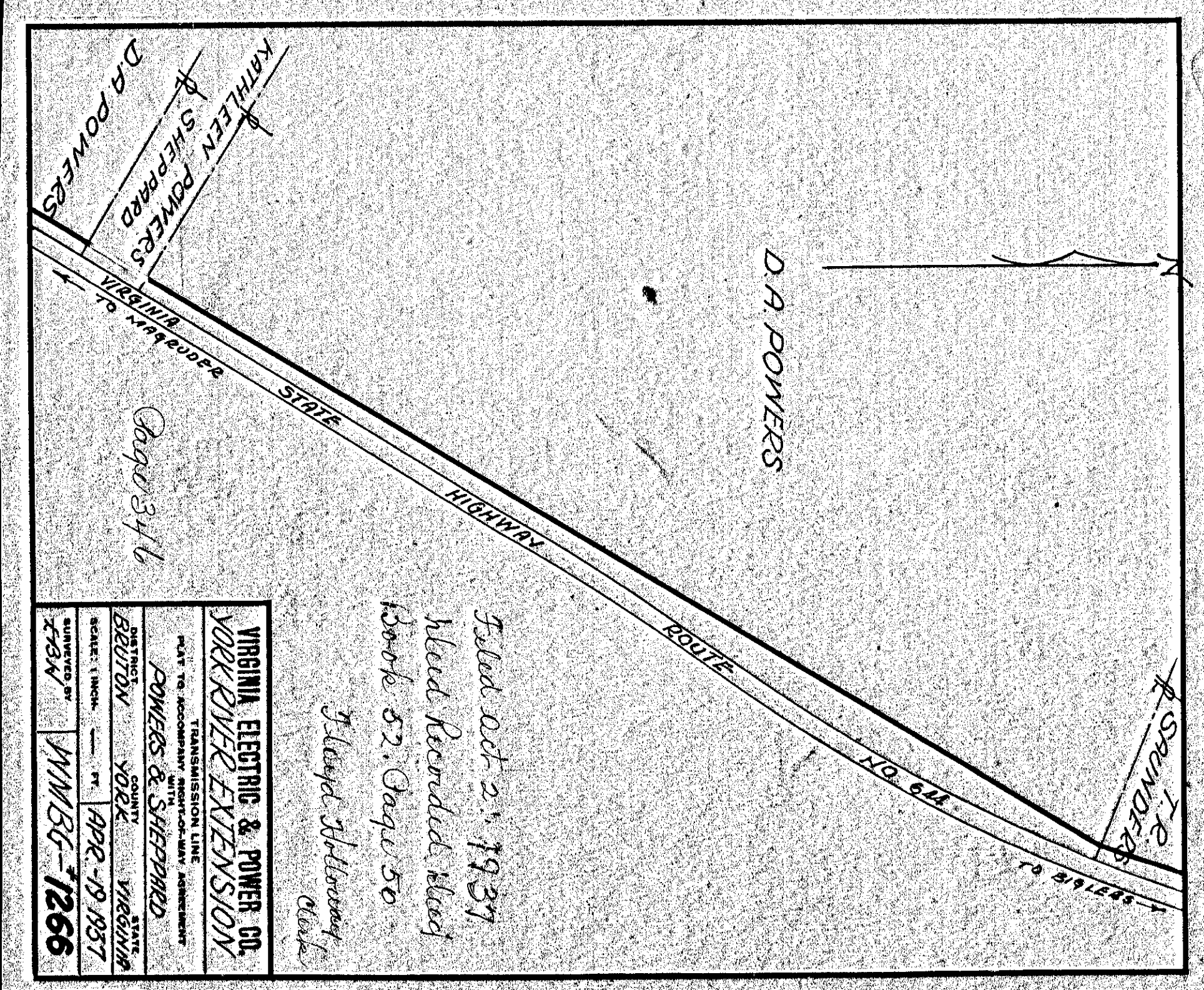
345



FILED Oct 21, 1937
 Book 52, Page 54
 Lloyd Shilman Clerk

VIRGINIA ELECTRIC & POWER CO. YORK RIVER EXTENSION	
TRANSMISSION LINE PLAT TO ACCOMPANY RIGHT-OF-WAY AGREEMENT	
DISTRICT BRUTON	COUNTY YORK
DISTRICT T.E. FENNE	COUNTY YORK
SCALE: 1 INCH = 40 FT.	DATE: APR 19 1937
SUBMITTED BY EBA	WMBG #1276

DRAWER No. SHEET No.



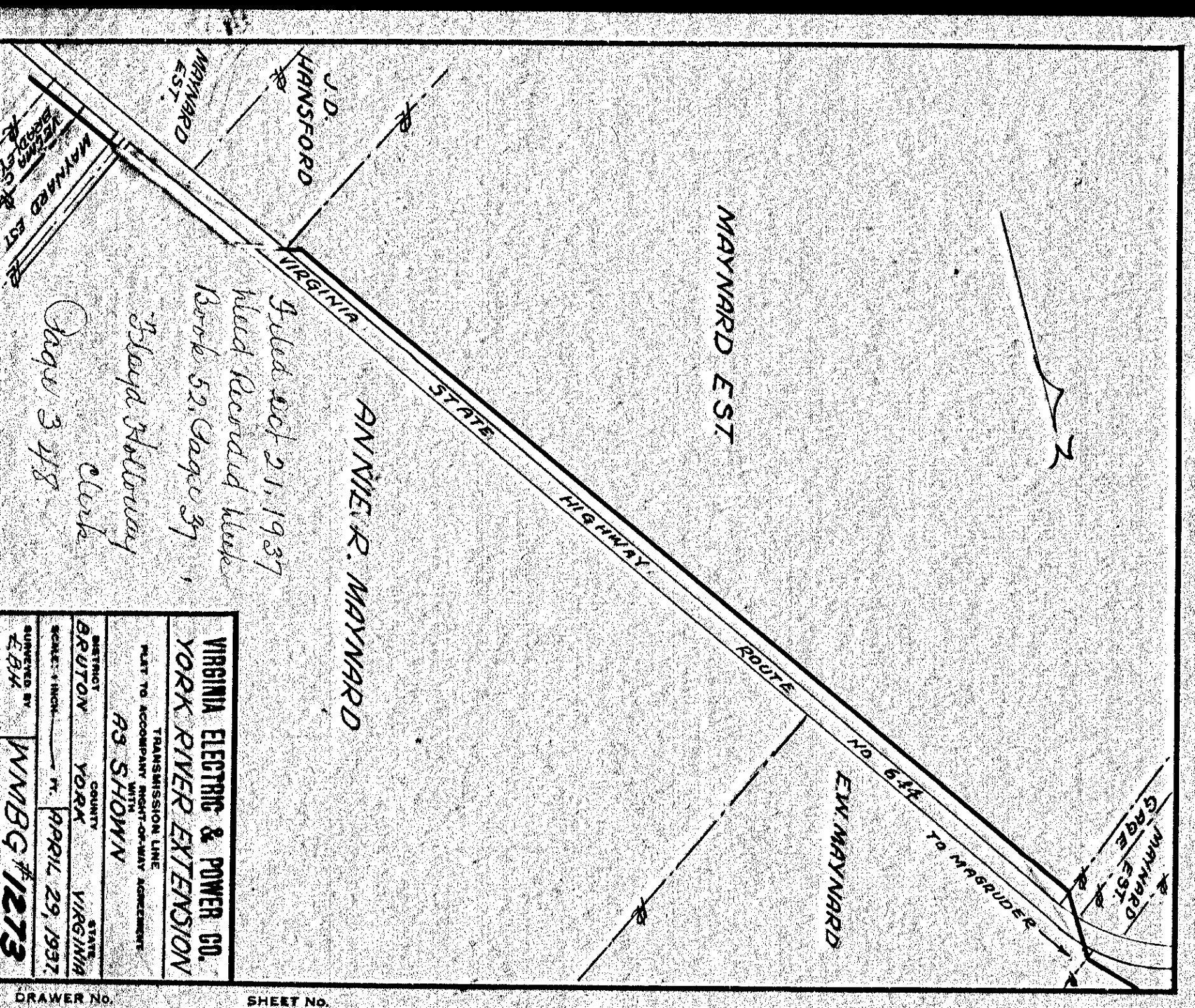
FILED Oct 21, 1937
 Book 52, Page 50
 Lloyd Shilman Clerk

VIRGINIA ELECTRIC & POWER CO. YORK RIVER EXTENSION	
TRANSMISSION LINE PLAT TO ACCOMPANY RIGHT-OF-WAY AGREEMENT	
DISTRICT BRUTON	COUNTY YORK
DISTRICT POWERS & SHEPPARD	COUNTY YORK
SCALE: 1 INCH = 40 FT.	DATE: APR 19 1937
SUBMITTED BY EBA	WMBG #1266

DRAWER No. SHEET No.

348

346



FILED Oct 21, 1937
 Book 52, Page 37
 Lloyd Shilman Clerk

VIRGINIA ELECTRIC & POWER CO. YORK RIVER EXTENSION	
TRANSMISSION LINE PLAT TO ACCOMPANY RIGHT-OF-WAY AGREEMENT	
DISTRICT BRUTON	COUNTY YORK
DISTRICT AS SHOWN	COUNTY YORK
SCALE: 1 INCH = 40 FT.	DATE: APR 19 1937
SUBMITTED BY EBA	WMBG #1273

DRAWER No. SHEET No.