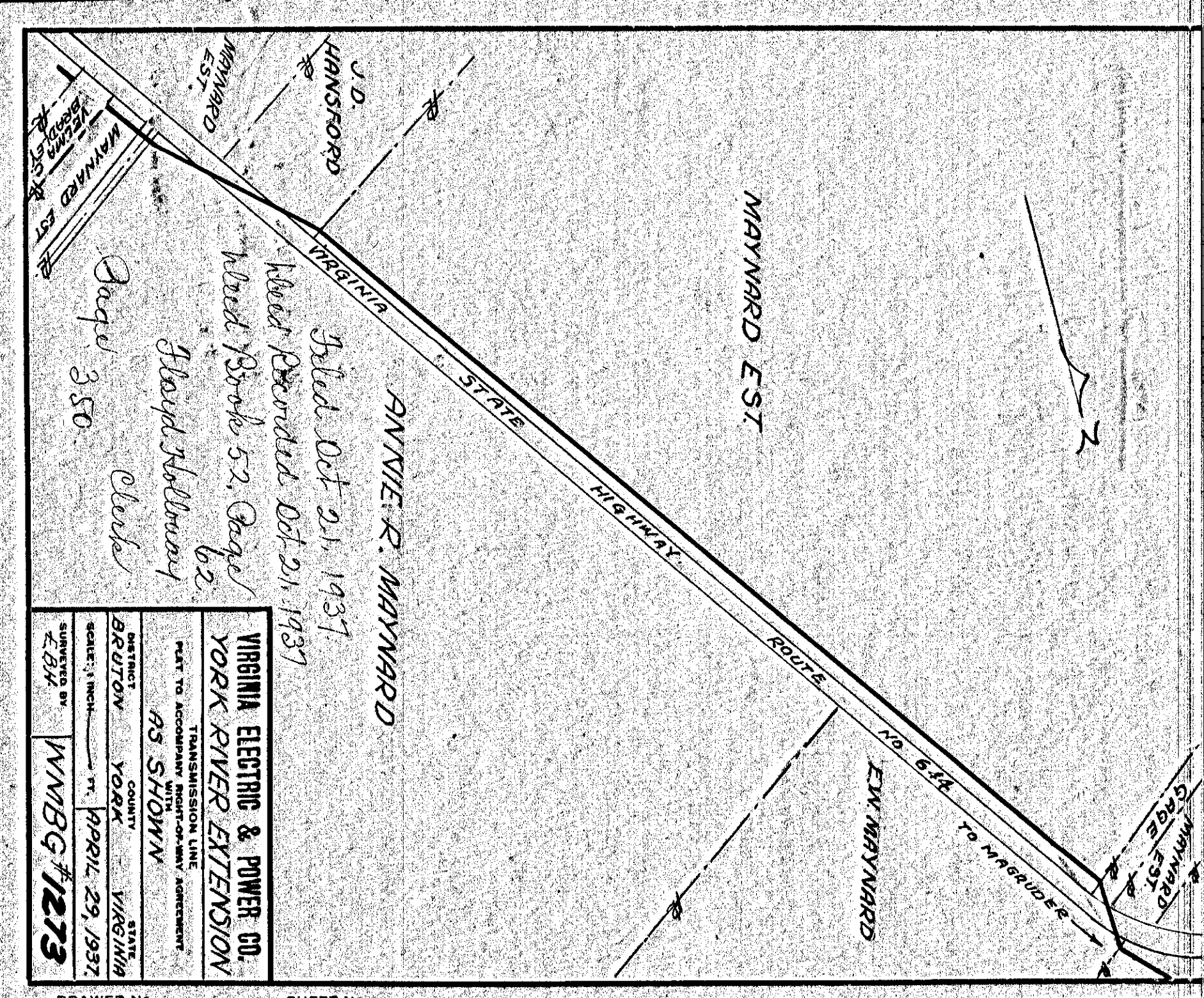
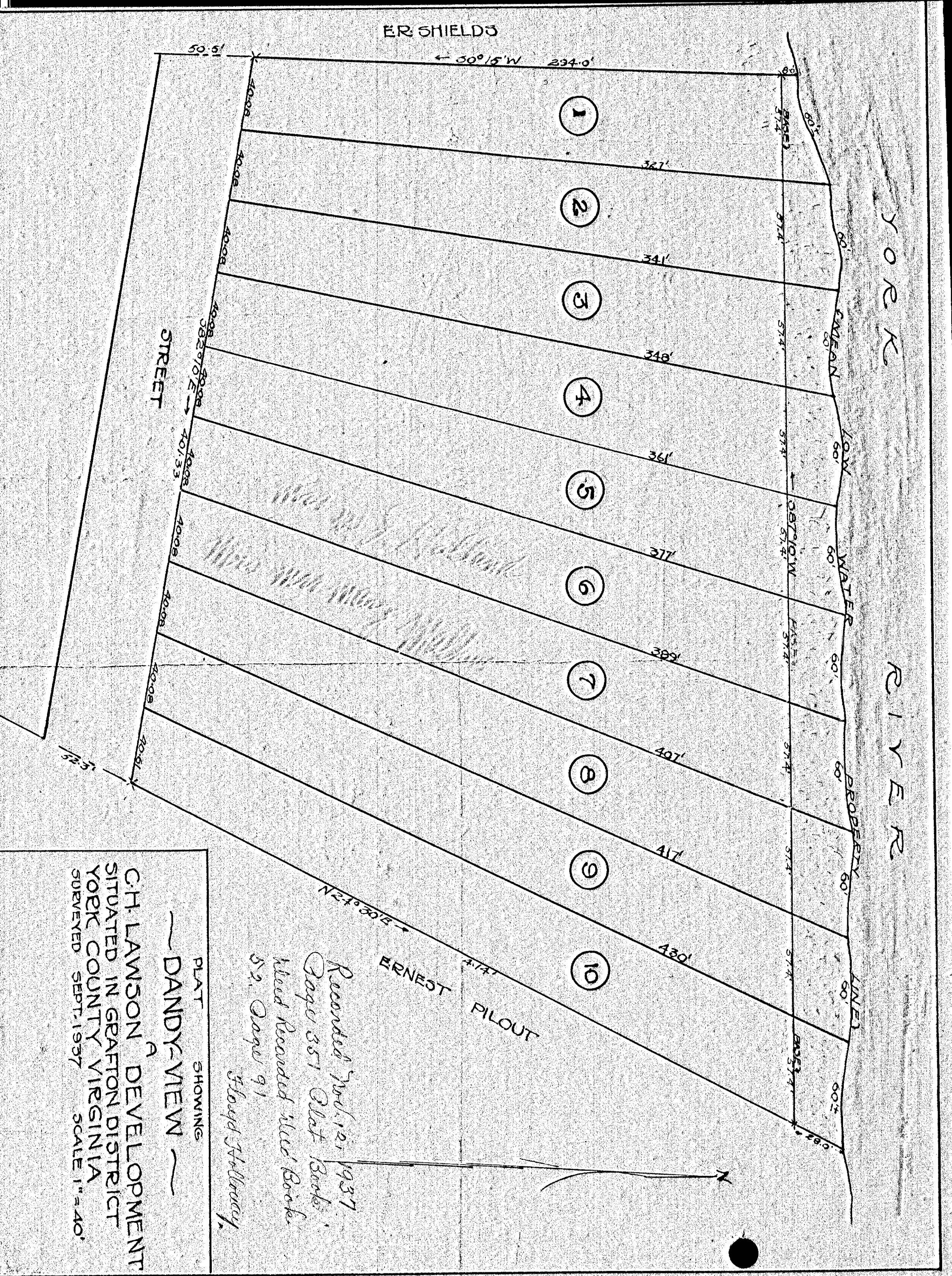


349
350
351



DRAWER No. SHEET No.



PLAT SHOWING
DANDY-VIEW
CH. LAWSON'S DEVELOPMENT
SITUATED IN GRAFTON DISTRICT
YORK COUNTY VIRGINIA
SURVEYED SEPT. 1937 SCALE 1" = 40'

Recorded July 12, 1937.
Page 351 Plat Book
Filed Recorded 'Nile' Book
52, Page 91
Howard Williams

ERNEST PILOUT

ER SHIELDS