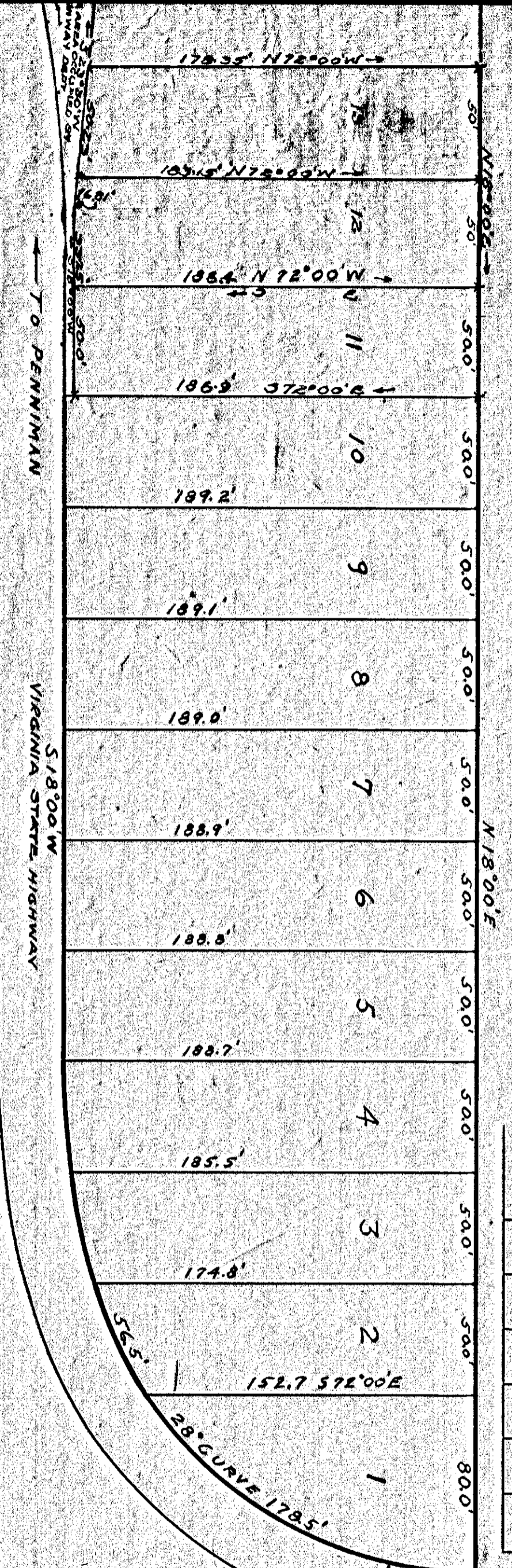
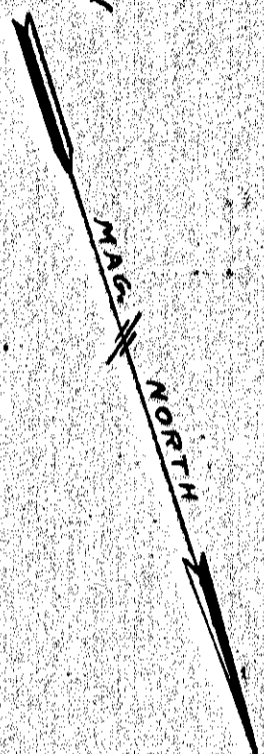
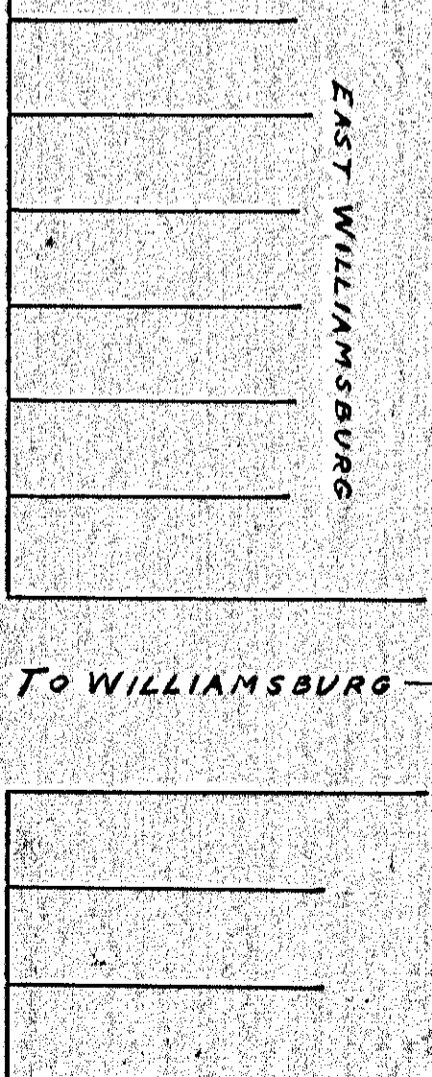


EAST WILLIAMSBURG SUBDIVISION



EAST WILLIAMSBURG



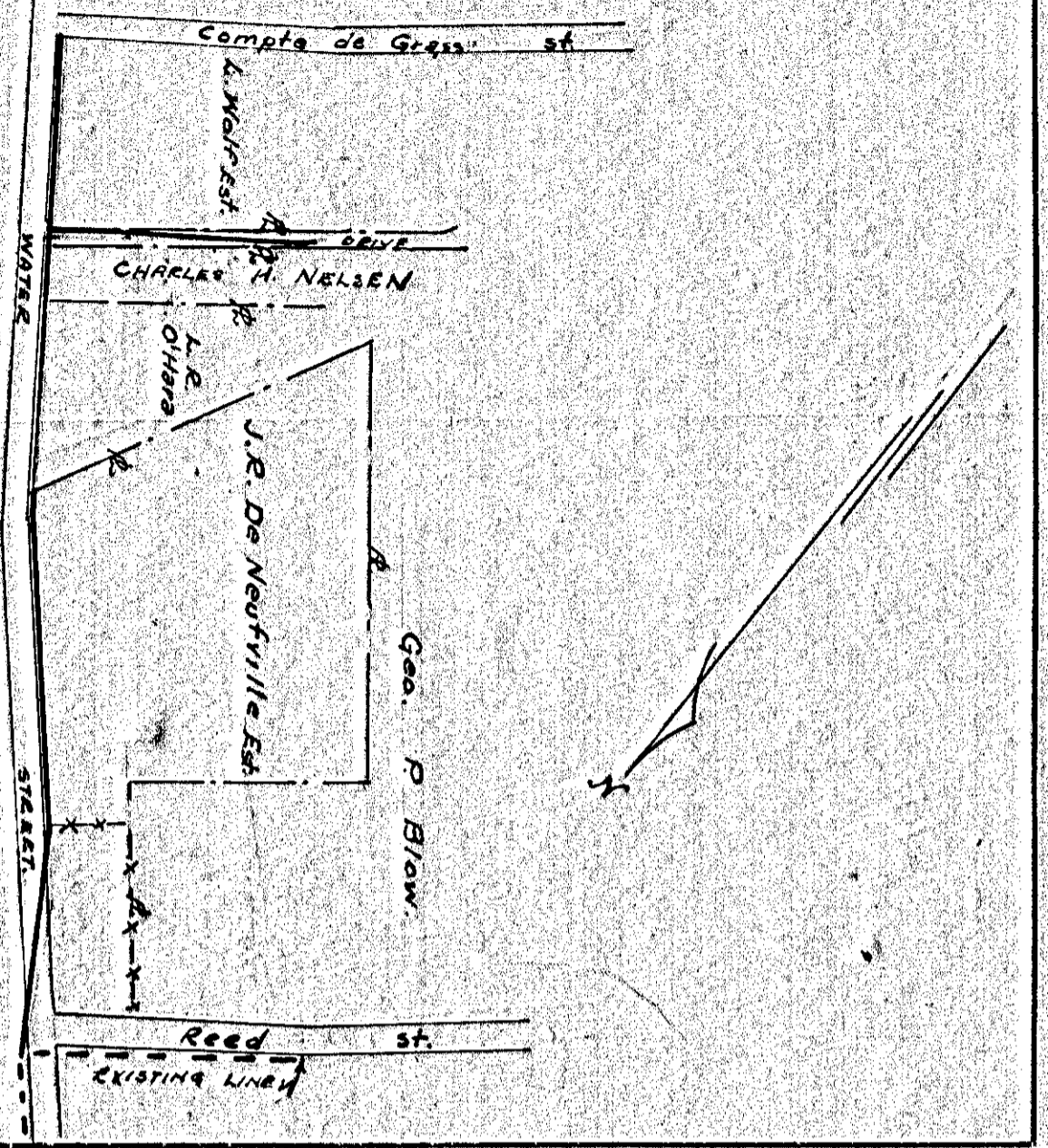
PLAT SHOWING SUBDIVISION OF A PART OF A.W. HITCHENS PROPERTY BORDERING ON NEW PENNIMAN ROAD BRUTON DISTRICT YORK COUNTY, VA. SCALE: 1"=50' SURVEYED BY V.D. NEWMANUS OCT. 1934 REVISED JUNE 1939 IRON MARKERS SHOWN

Filed July 8, 1939
Book Record
Book 53, page 580
Shay & McCreary, Clerk

418

419

420



Record July 8, 1939
Book Record
Book 53, page 580
Shay & McCreary, Clerk

VIRGINIA ELECTRIC & POWER CO.
YORK TOWN DISTRIBUTION

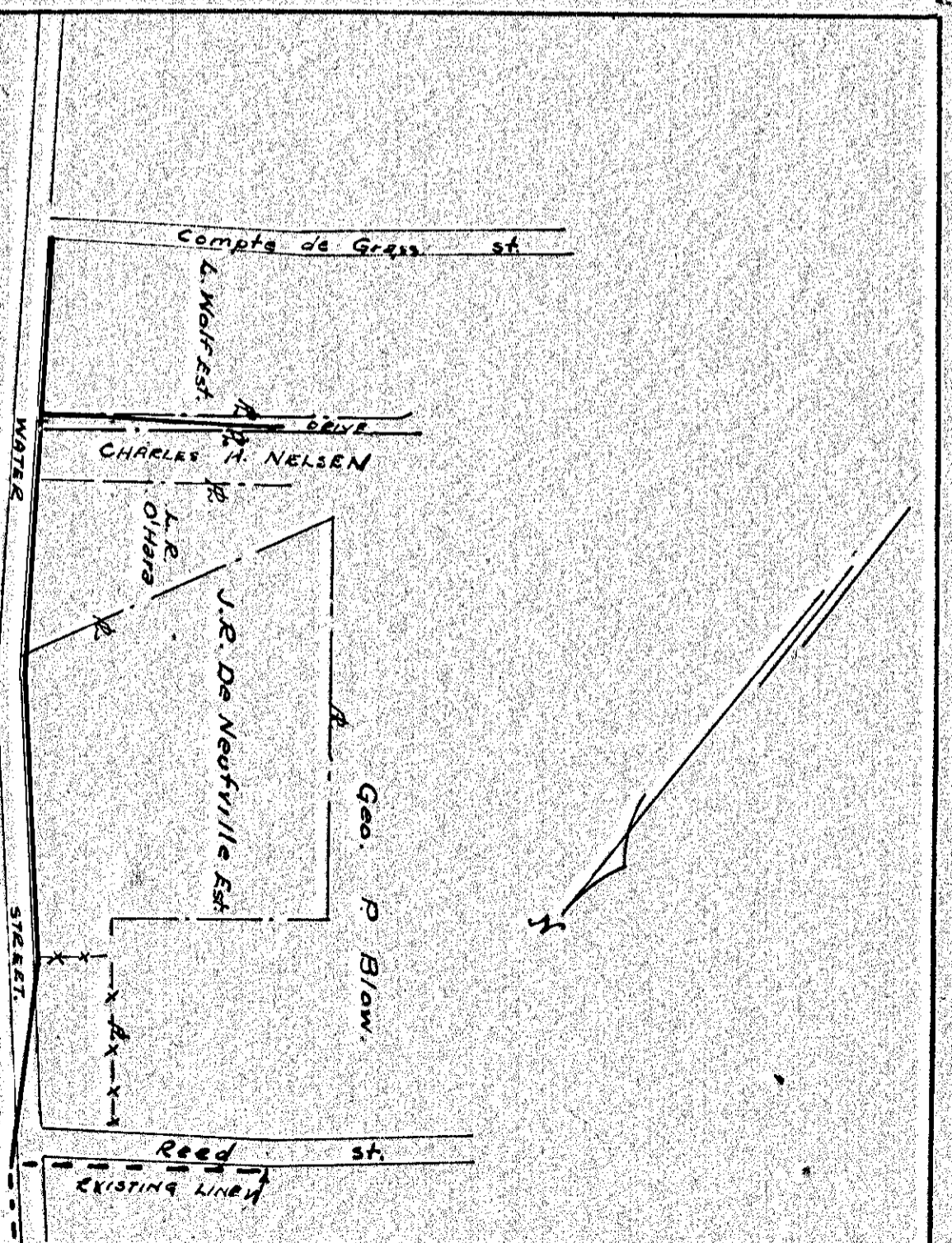
PLAT TO ACCOMPANY RIGHT-OF-WAY AGREEMENT WITH S.W. SHOWY

DISTRICT NELSON COUNTY YORK STATE VA

SCALE: 1"=40 FT. MAY 18, 1939

YORK RIVER

DRAWER NO. SHEET NO.



Record July 8, 1939
Book Record
Book 53, page 580
Shay & McCreary, Clerk

VIRGINIA ELECTRIC & POWER CO.
YORK TOWN DISTRIBUTION

PLAT TO ACCOMPANY RIGHT-OF-WAY AGREEMENT WITH S.W. SHOWY

DISTRICT NELSON COUNTY YORK STATE VA

SCALE: 1"=40 FT. MAY 18, 1939

YORK RIVER

DRAWER NO. SHEET NO.