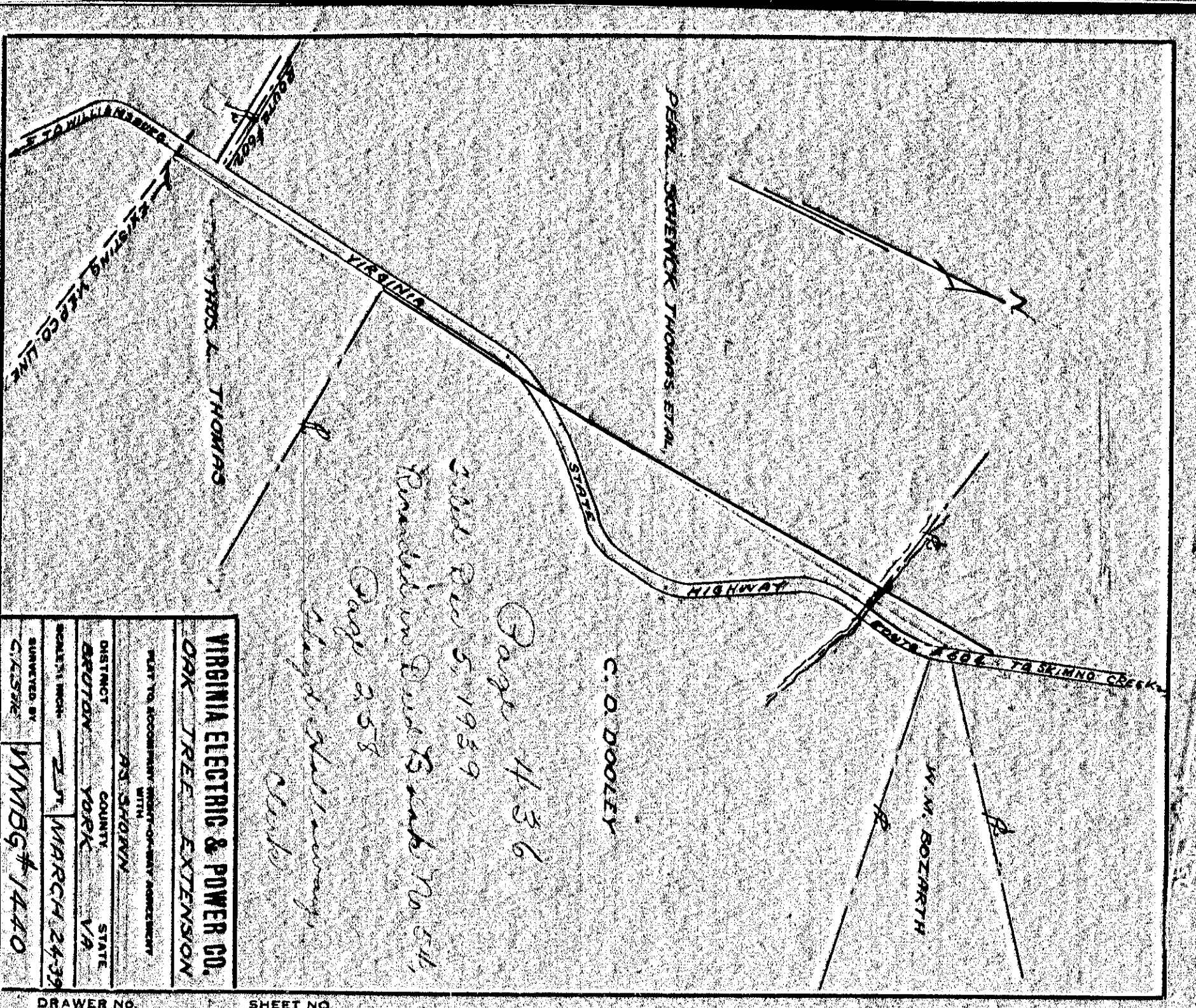


VIRGINIA ELECTRIC & POWER CO.
OAK TREE EXTENSION
 PART TO ACCOMPANY RIGHT-OF-WAY AGREEMENT WITH
 DISTRICT JRS. SCHOYAN
 COUNTY YORK VA STATE
 SHEET NO. 2ND MARCH 24-39
 DRAWN BY C.W.L. WMBG #1240

C. O. DOOLEY
 Page 435
 Sold Dec 5, 1939
 Parcel in Paul's Bank No. 54
 Page 256
 Lloyd Shilaway, Clerk

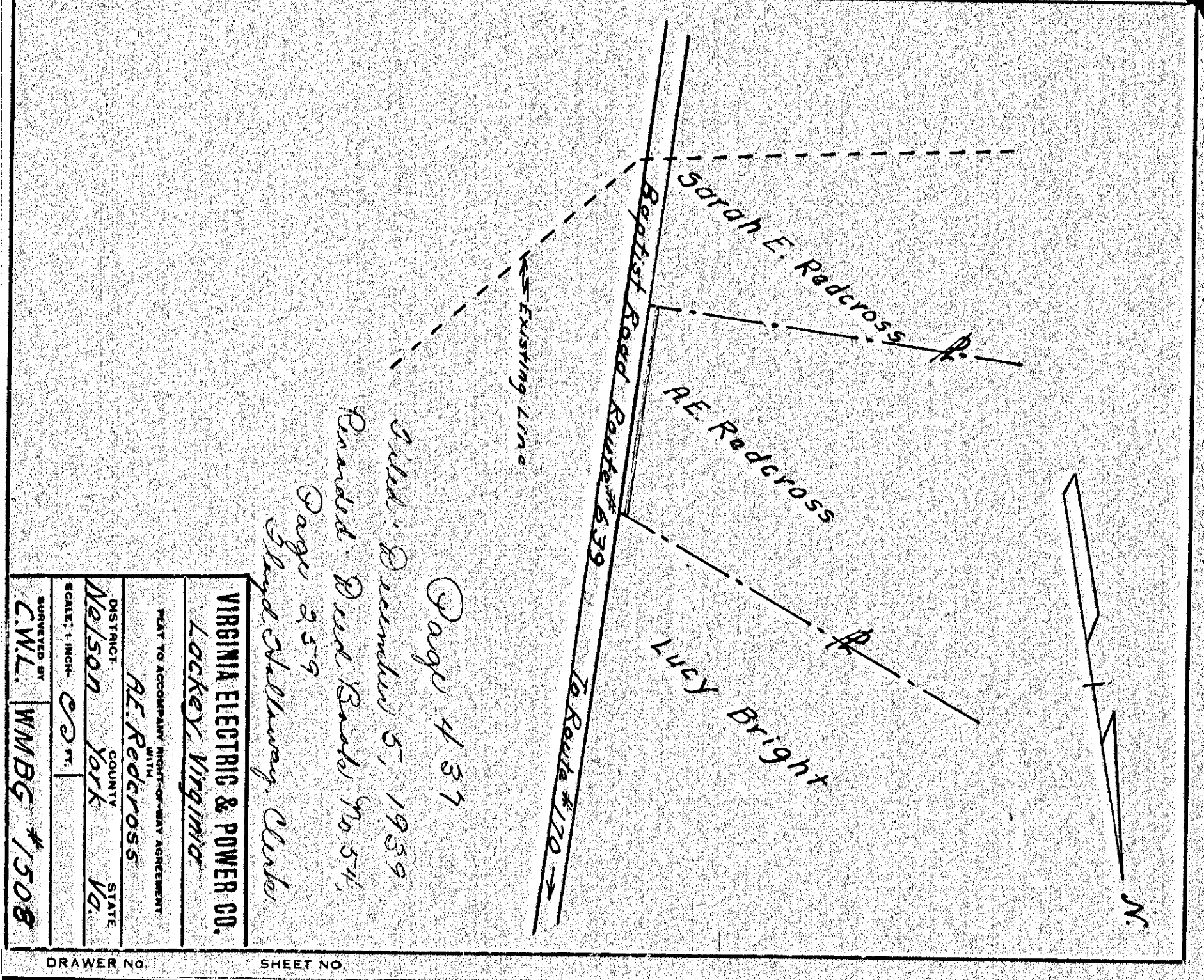
435



VIRGINIA ELECTRIC & POWER CO.
OAK TREE EXTENSION
 PART TO ACCOMPANY RIGHT-OF-WAY AGREEMENT WITH
 DISTRICT JRS. SCHOYAN
 COUNTY YORK VA STATE
 SHEET NO. 2ND MARCH 24-39
 DRAWN BY C.W.L. WMBG #1240

C. O. DOOLEY
 Page 436
 Sold Dec 5, 1939
 Parcel in Paul's Bank No. 54,
 Page 258
 Lloyd Shilaway, Clerk

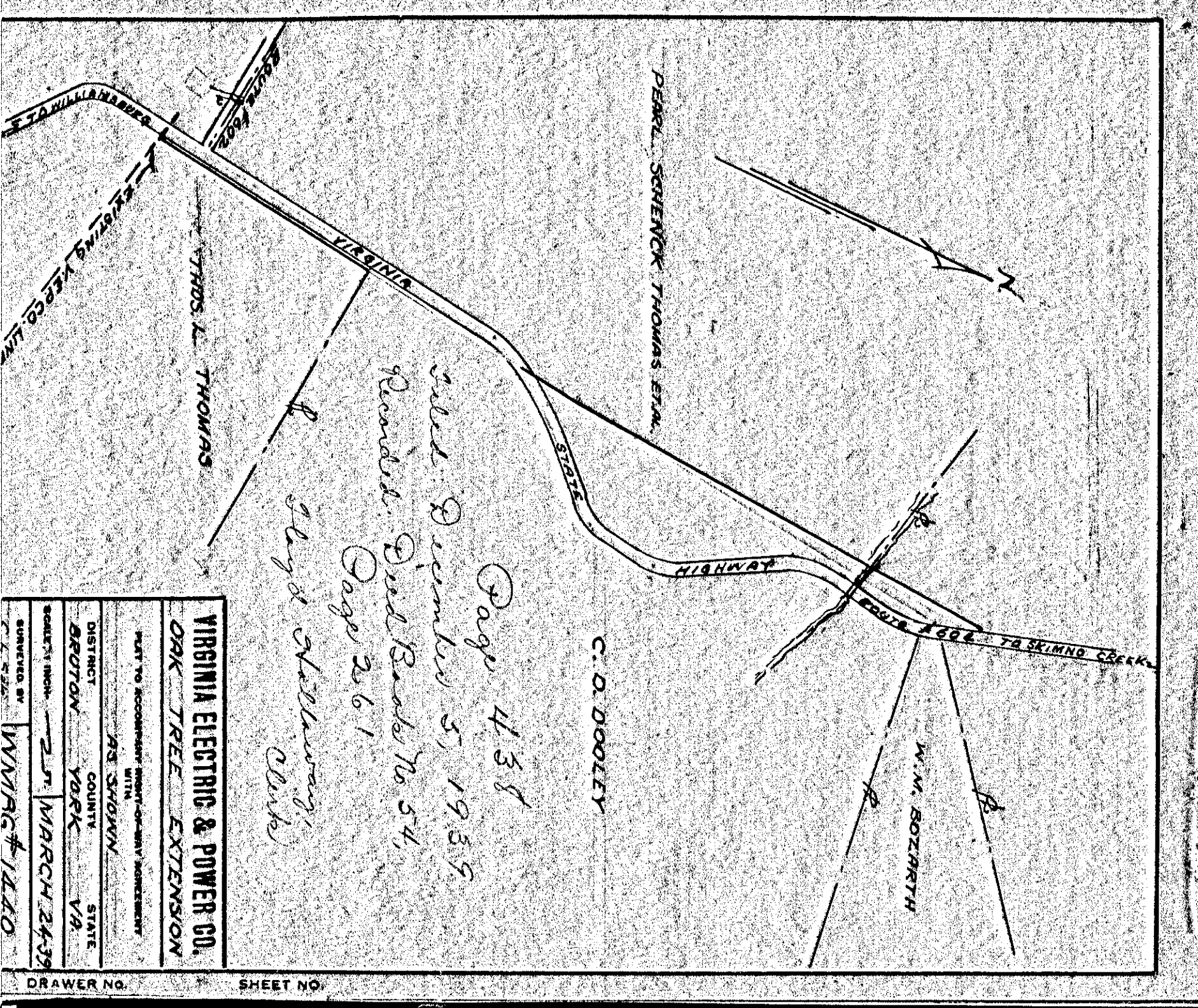
436



VIRGINIA ELECTRIC & POWER CO.
OAK TREE EXTENSION
 PART TO ACCOMPANY RIGHT-OF-WAY AGREEMENT WITH
 DISTRICT JRS. SCHOYAN
 COUNTY YORK VA STATE
 SHEET NO. 2ND MARCH 24-39
 DRAWN BY C.W.L. WMBG #1508

Page 437
 Sold December 5, 1939
 Parcel in Paul's Bank No. 54,
 Page 259
 Lloyd Shilaway, Clerk

437



VIRGINIA ELECTRIC & POWER CO.
OAK TREE EXTENSION
 PART TO ACCOMPANY RIGHT-OF-WAY AGREEMENT WITH
 DISTRICT JRS. SCHOYAN
 COUNTY YORK VA STATE
 SHEET NO. 2ND MARCH 24-39
 DRAWN BY C.W.L. WMBG #1240

Page 438
 Sold December 5, 1939
 Parcel in Paul's Bank No. 54,
 Page 261
 Lloyd Shilaway, Clerk

438