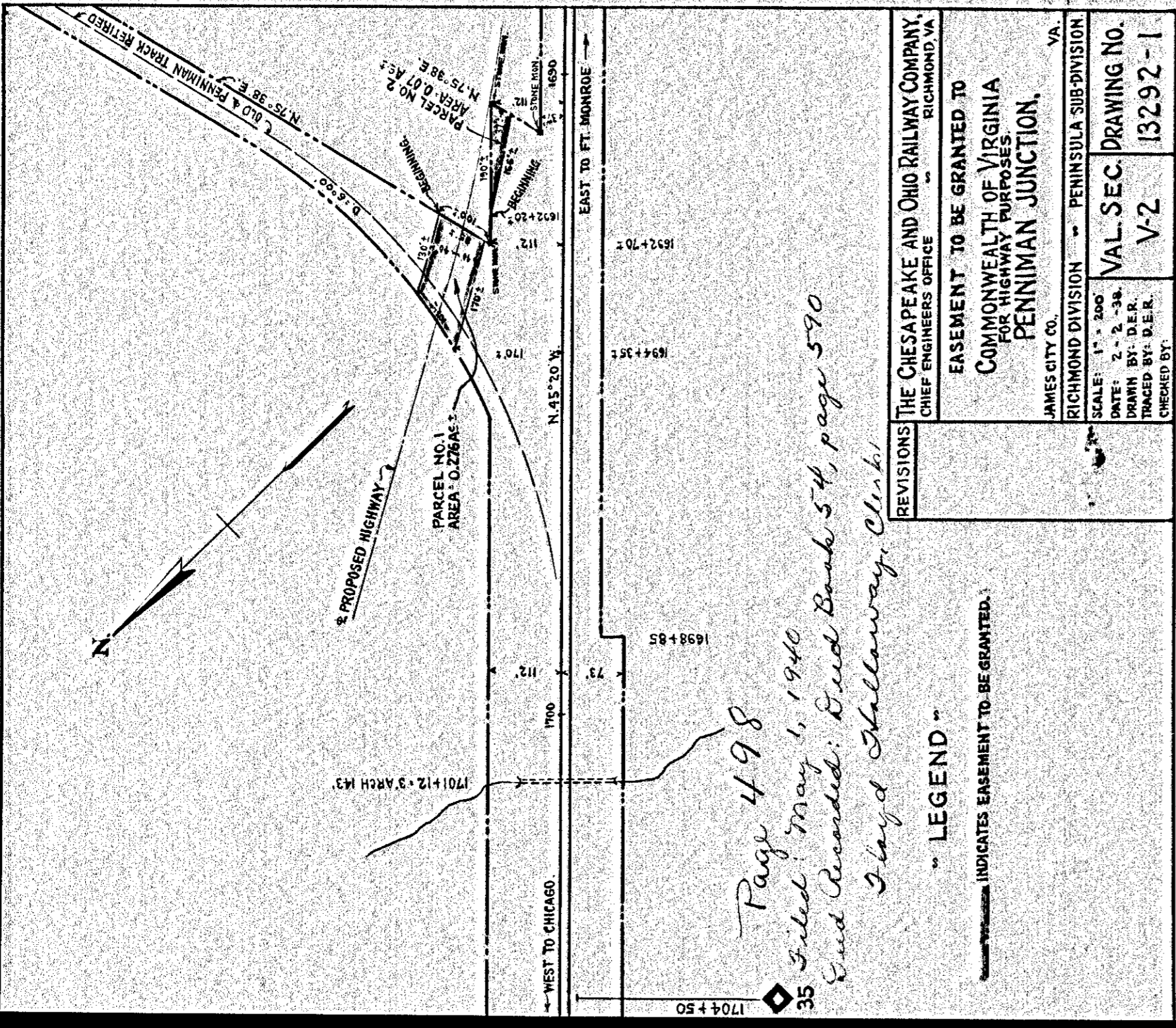


Page 500  
 Filed May 1, 1940  
 Deed Recorded: Deed Book  
 No 54, page 590  
 Floyd Hallaway, Clerk.

INDICATES EASEMENT TO BE GRANTED.

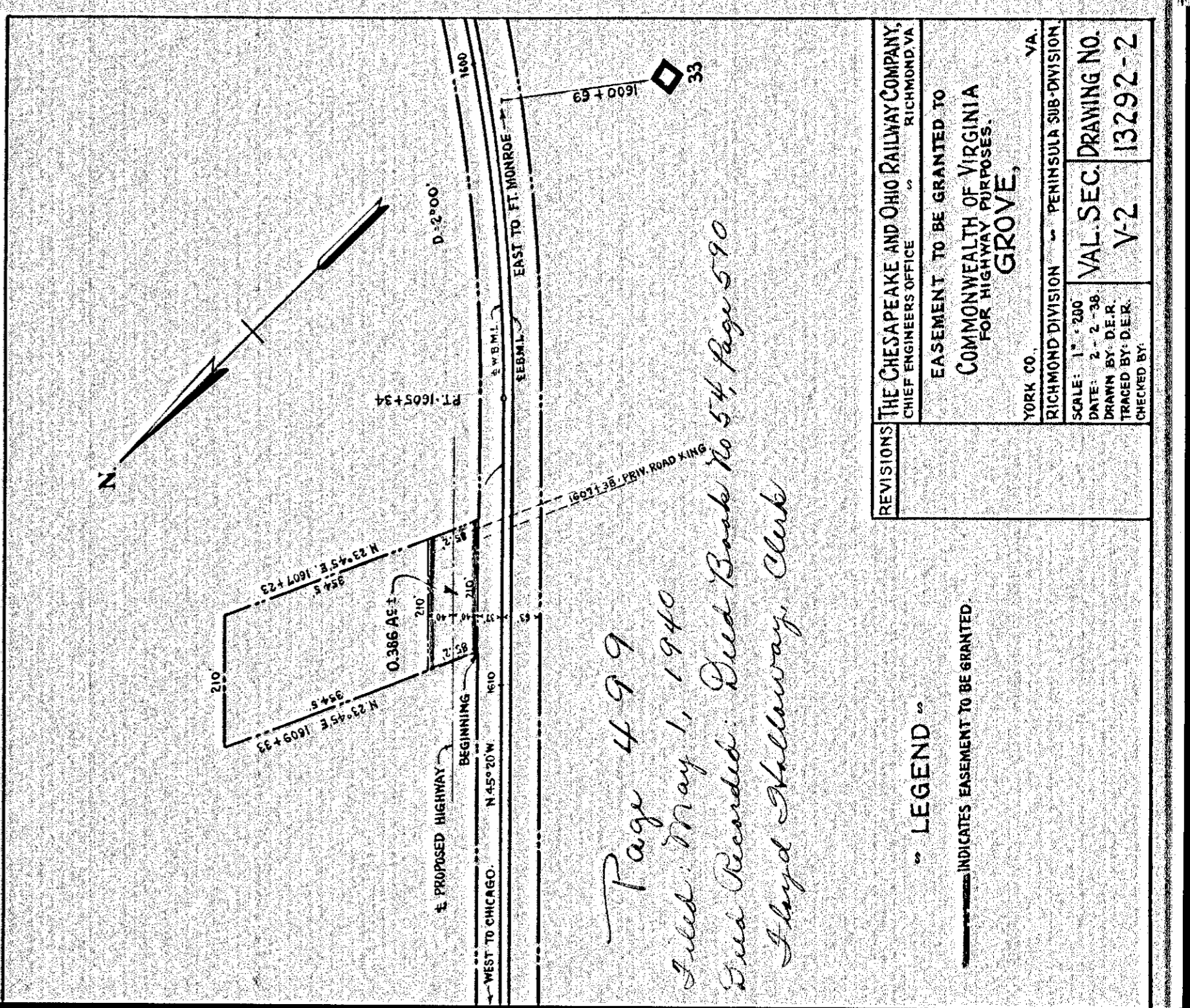
REVISIONS	THE CHESAPEAKE AND OHIO RAILWAY COMPANY, CHIEF ENGINEERS OFFICE	RICHMOND, VA.
EASEMENT TO BE GRANTED TO COMMONWEALTH OF VIRGINIA FOR HIGHWAY PURPOSES. BOOTH.		
JAMES CITY CO.		
RICHMOND DIVISION		PENINSULA SUB-DIVISION
SCALE: 1" = 200'	VAL. SEC. DRAWING NO.	
DATE: 7-14-38	V-2	13436-A
DRAWN BY: D.E.R.		
TRACED BY: D.E.R.		
CHECKED BY: R.F.S.		



Page 498  
 Filed May 1, 1940  
 Deed Recorded: Deed Book 54, page 590  
 Floyd Hallaway, Clerk.

LEGEND  
 INDICATES EASEMENT TO BE GRANTED.

REVISIONS	THE CHESAPEAKE AND OHIO RAILWAY COMPANY, CHIEF ENGINEERS OFFICE	RICHMOND, VA.
EASEMENT TO BE GRANTED TO COMMONWEALTH OF VIRGINIA FOR HIGHWAY PURPOSES. PENNIMAN JUNCTION.		
JAMES CITY CO.		
RICHMOND DIVISION		PENINSULA SUB-DIVISION
SCALE: 1" = 200'	VAL. SEC. DRAWING NO.	
DATE: 2-2-38	V-2	13292-1
DRAWN BY: D.E.R.		
TRACED BY: D.E.R.		
CHECKED BY:		



Page 499  
 Filed May 1, 1940  
 Deed Recorded: Deed Book No 54, page 590  
 Floyd Hallaway, Clerk.

LEGEND  
 INDICATES EASEMENT TO BE GRANTED.

REVISIONS	THE CHESAPEAKE AND OHIO RAILWAY COMPANY, CHIEF ENGINEERS OFFICE	RICHMOND, VA.
EASEMENT TO BE GRANTED TO COMMONWEALTH OF VIRGINIA FOR HIGHWAY PURPOSES. GROVE.		
YORK CO.		
RICHMOND DIVISION		PENINSULA SUB-DIVISION
SCALE: 1" = 200'	VAL. SEC. DRAWING NO.	
DATE: 2-2-38	V-2	13292-2
DRAWN BY: D.E.R.		
TRACED BY: D.E.R.		
CHECKED BY:		